

**Robin Generator**

---

Model **RG2800IS**  
for CANADA

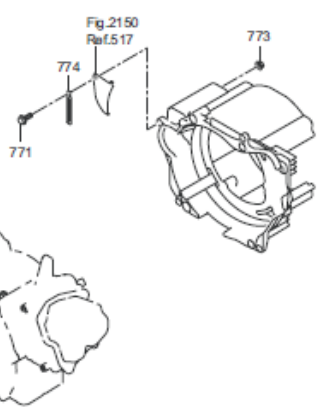
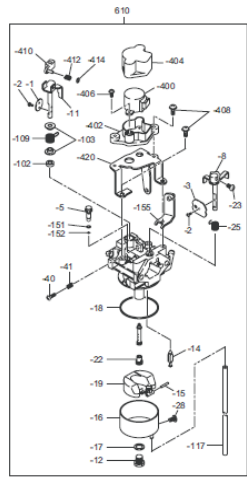
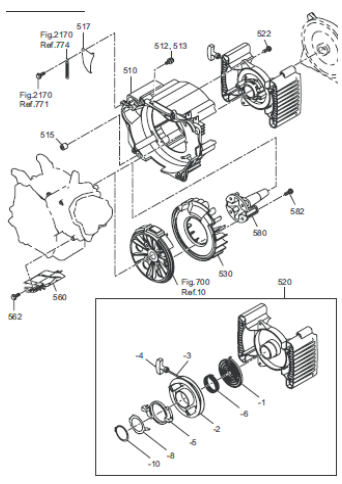
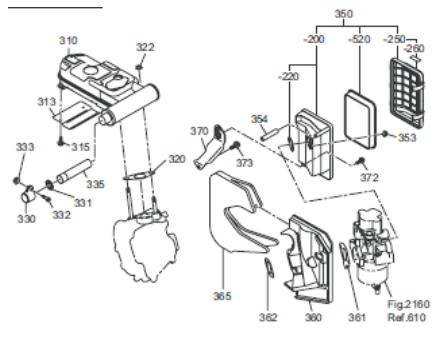
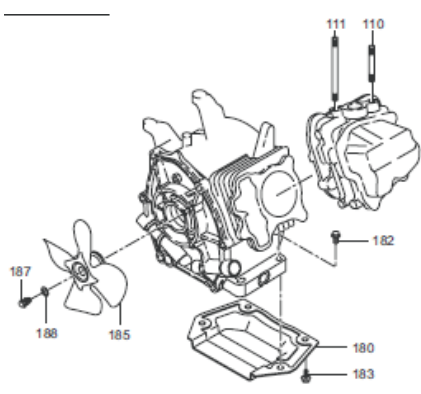
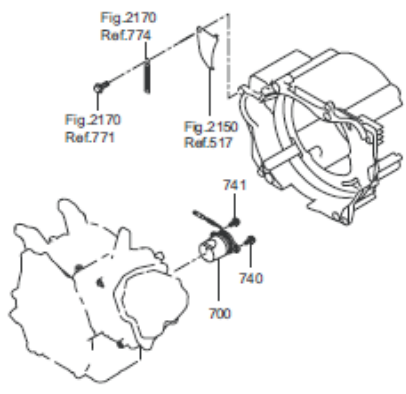
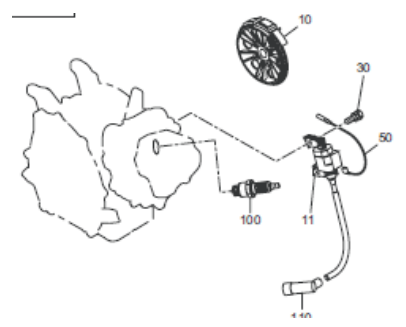
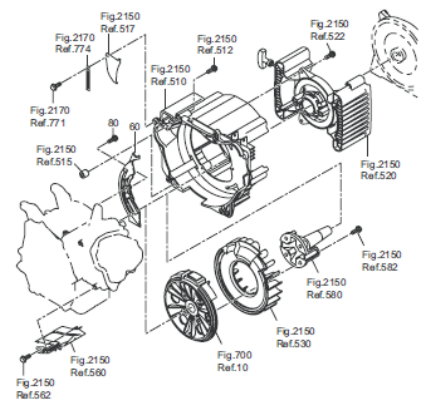
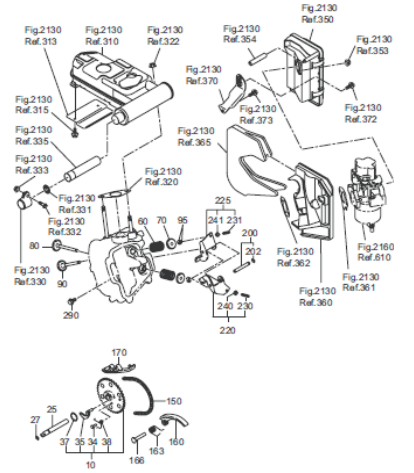
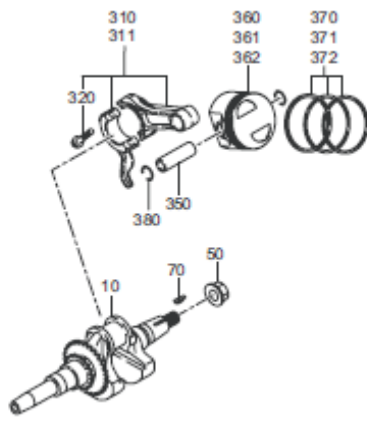
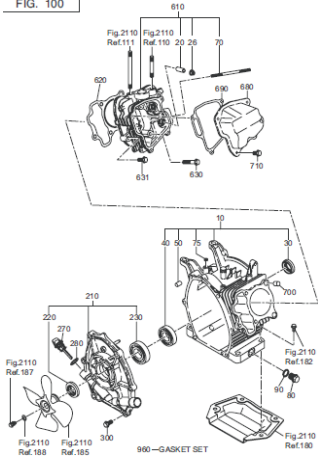
# **PARTS CATALOG**

Spec. No. RAS28023021  
(EX170D20350)

**FUJI HEAVY INDUSTRIES LTD.**

ISSUE EMD-GP6342	
ISSUE DATE	2006.10

FIG. 100



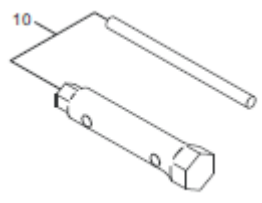
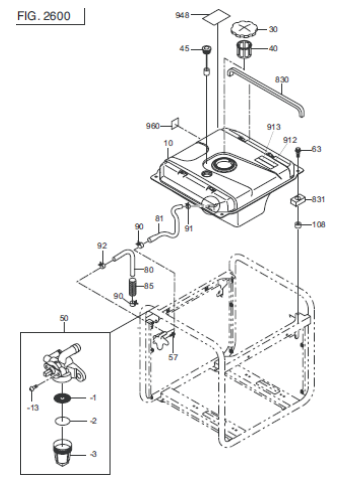
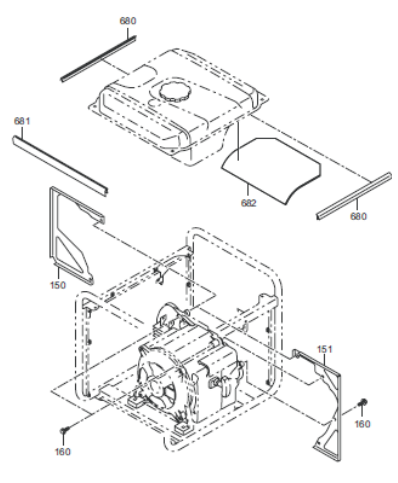
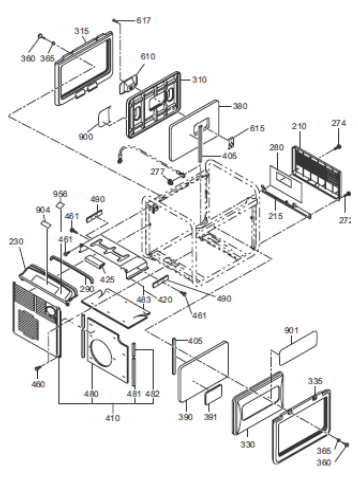
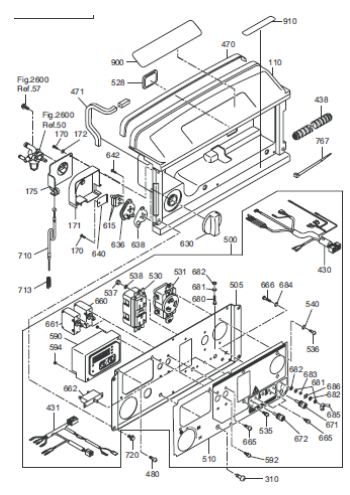
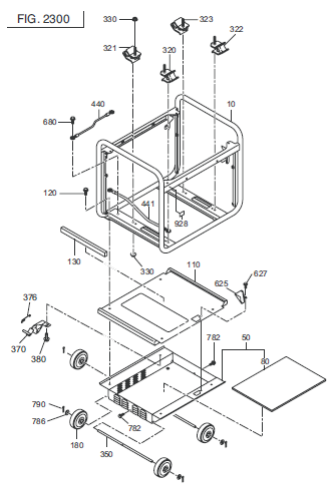
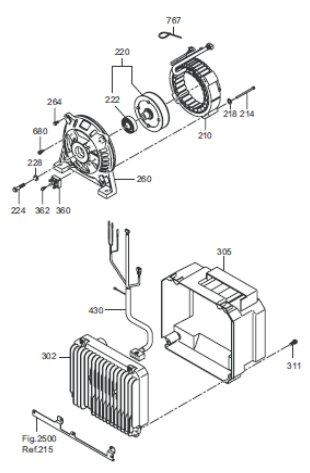


FIG. 100

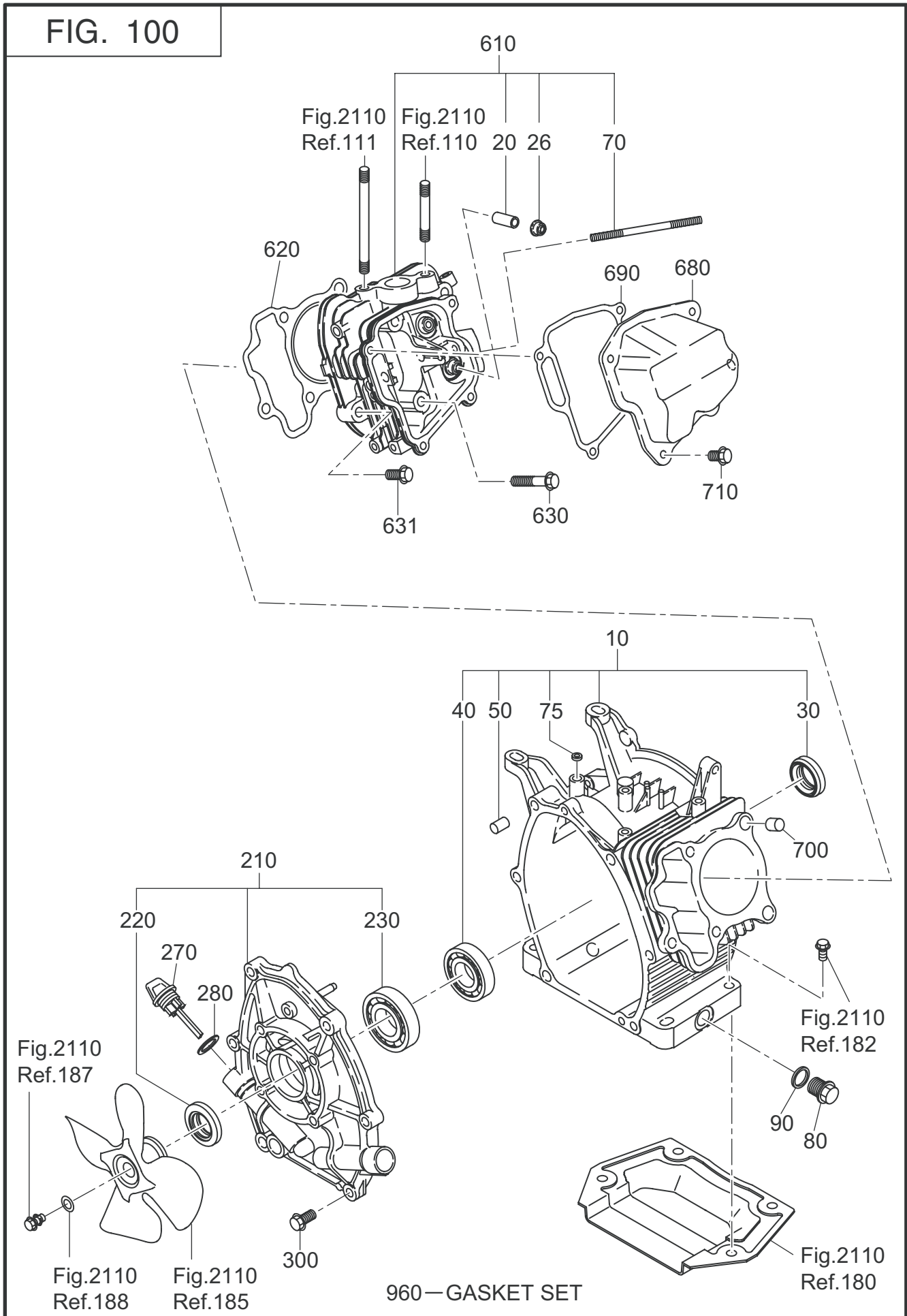




FIG. 200

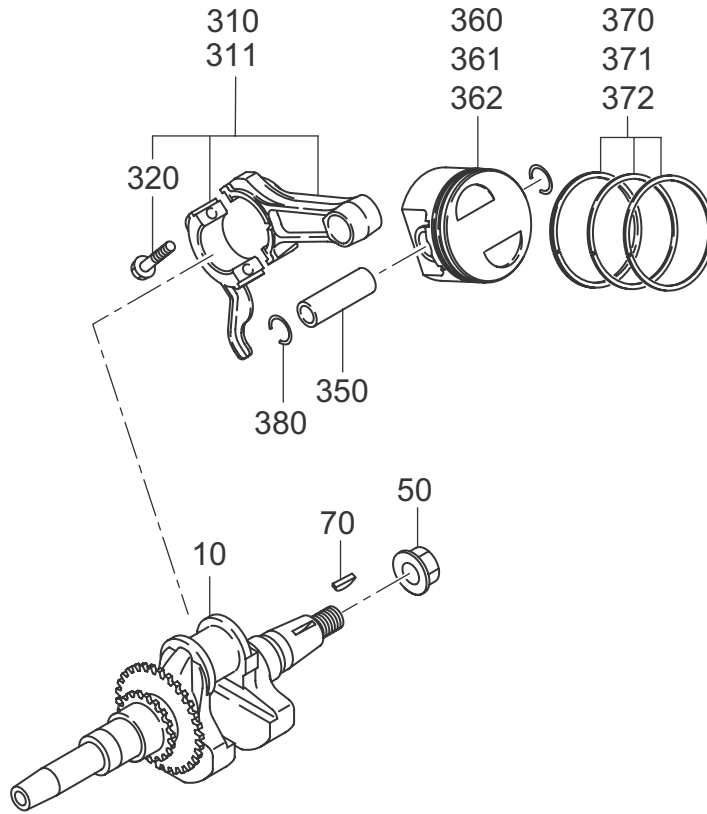




FIG. 300

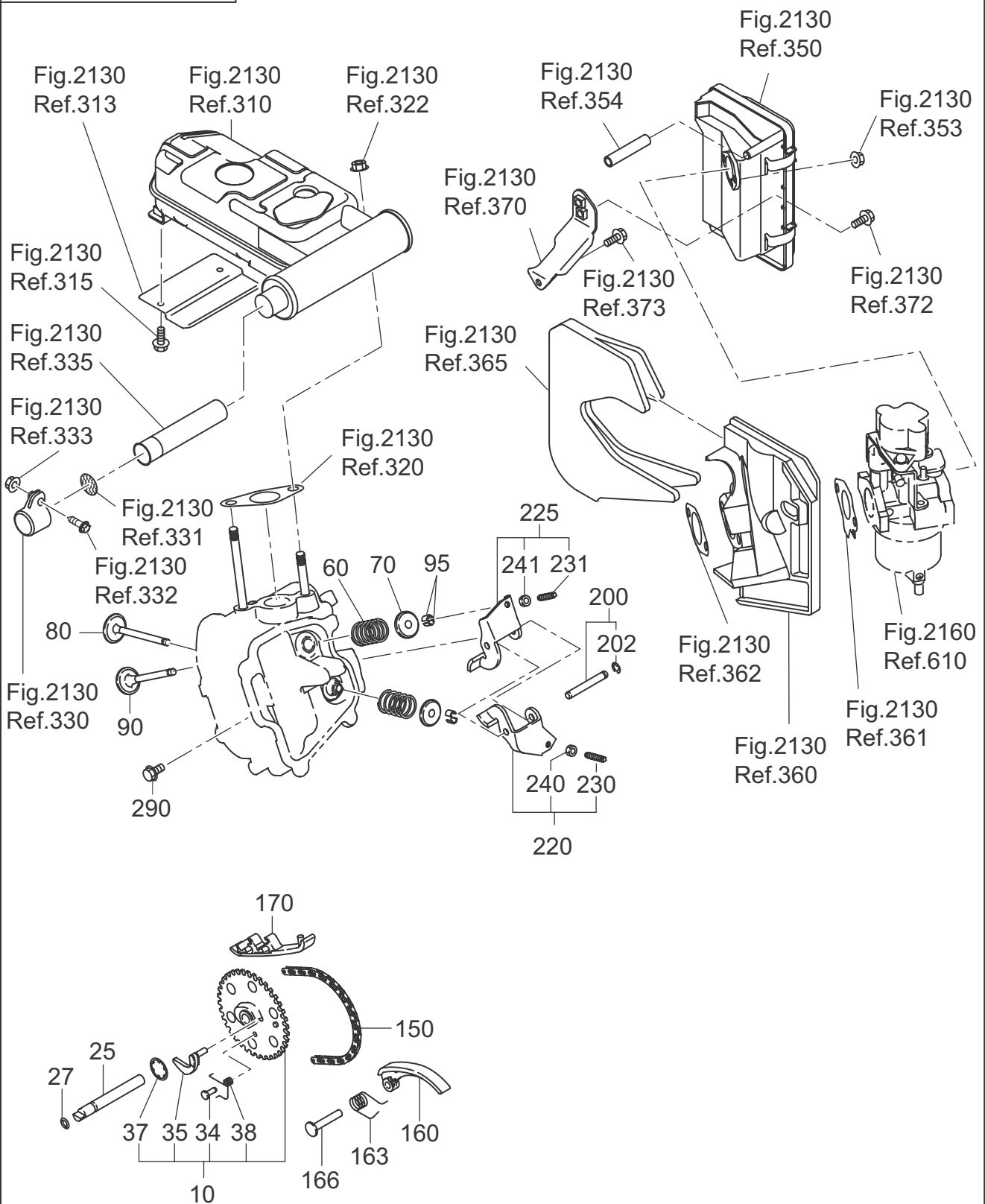






FIG. 400

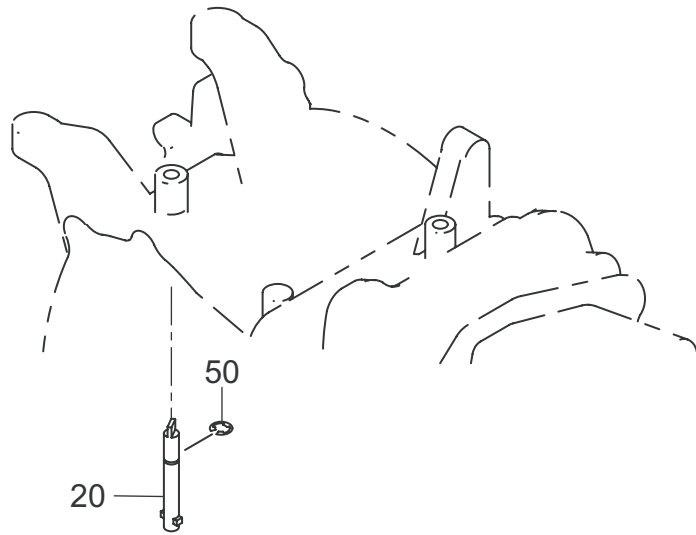




FIG. 500

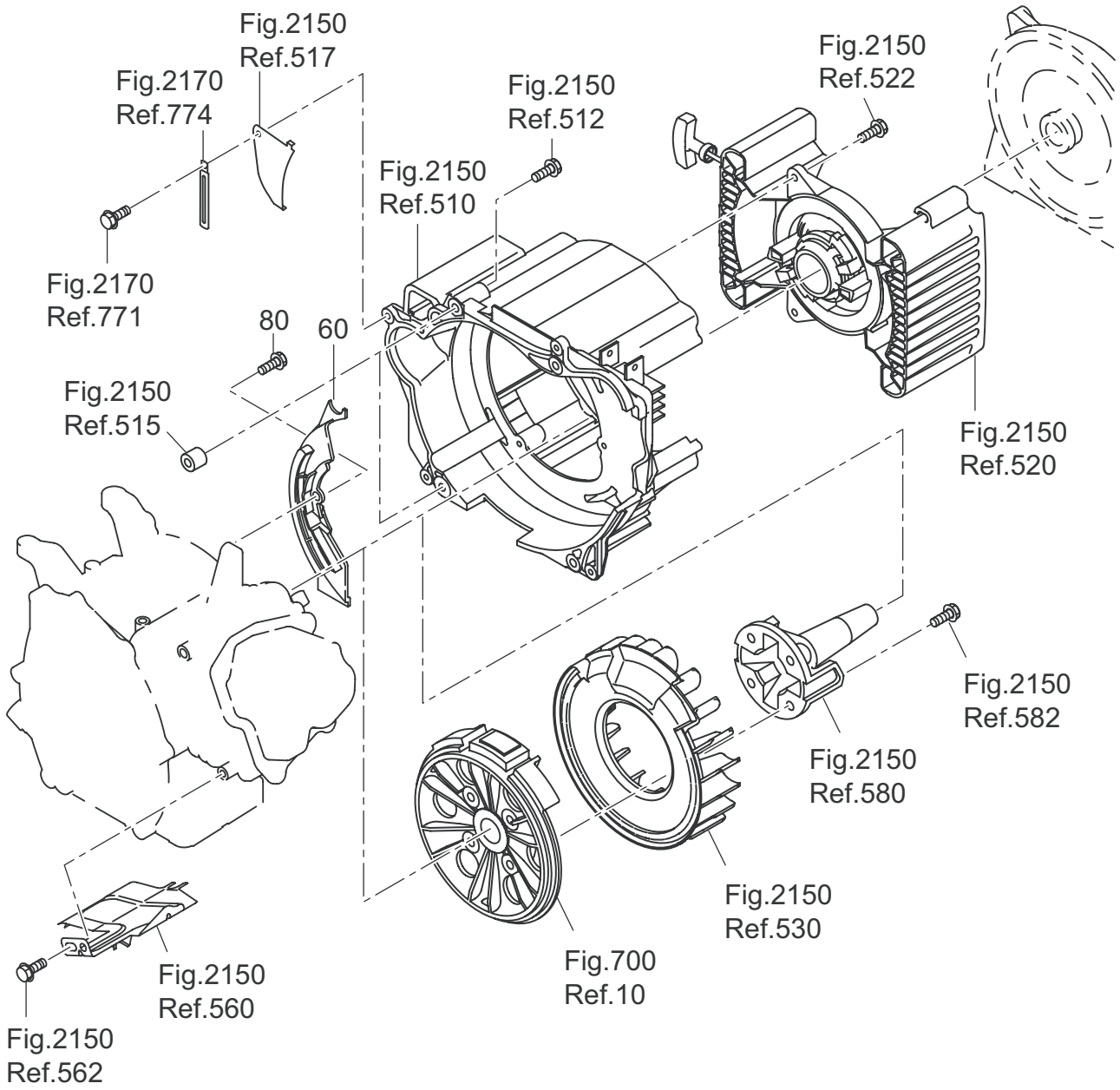




FIG. 700

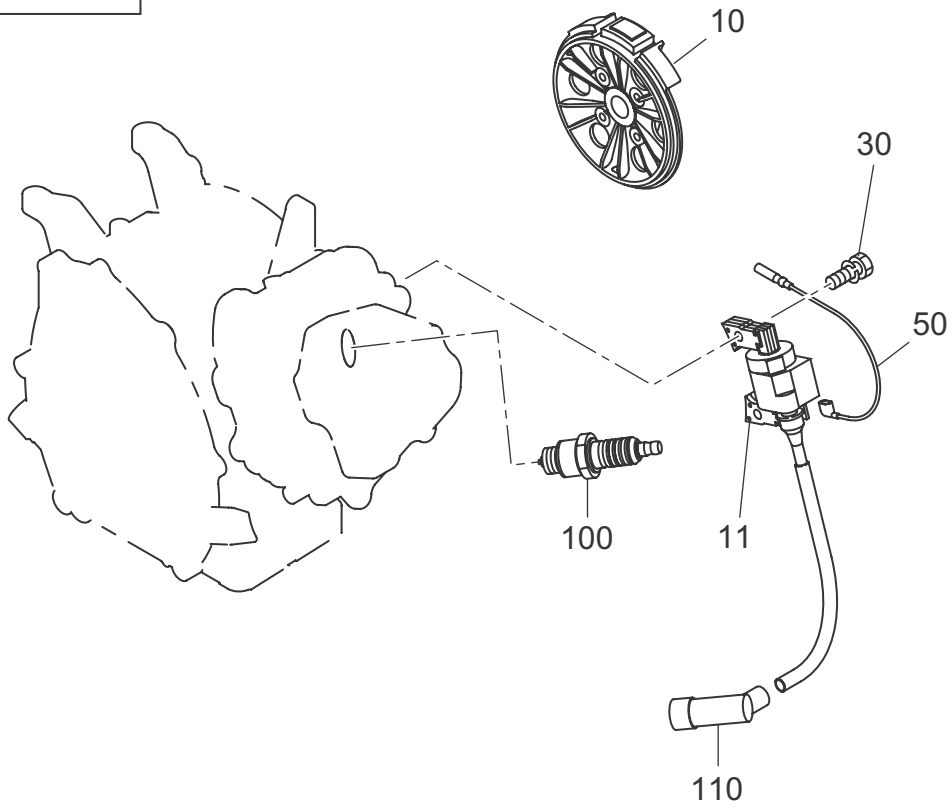




FIG. 770

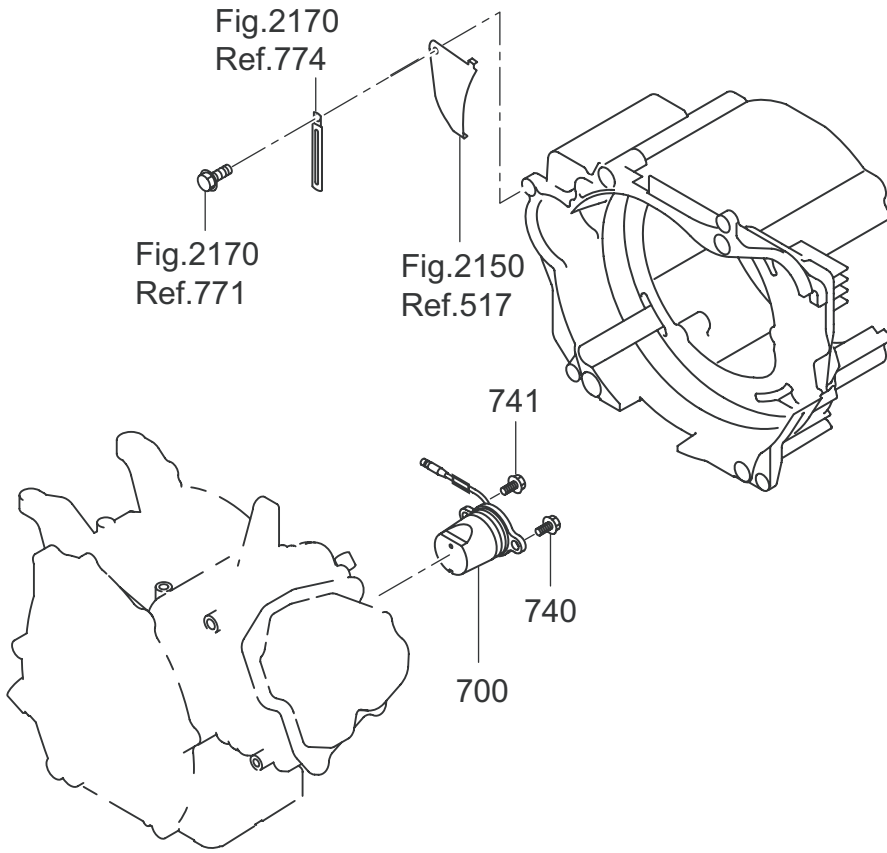






FIG. 2110

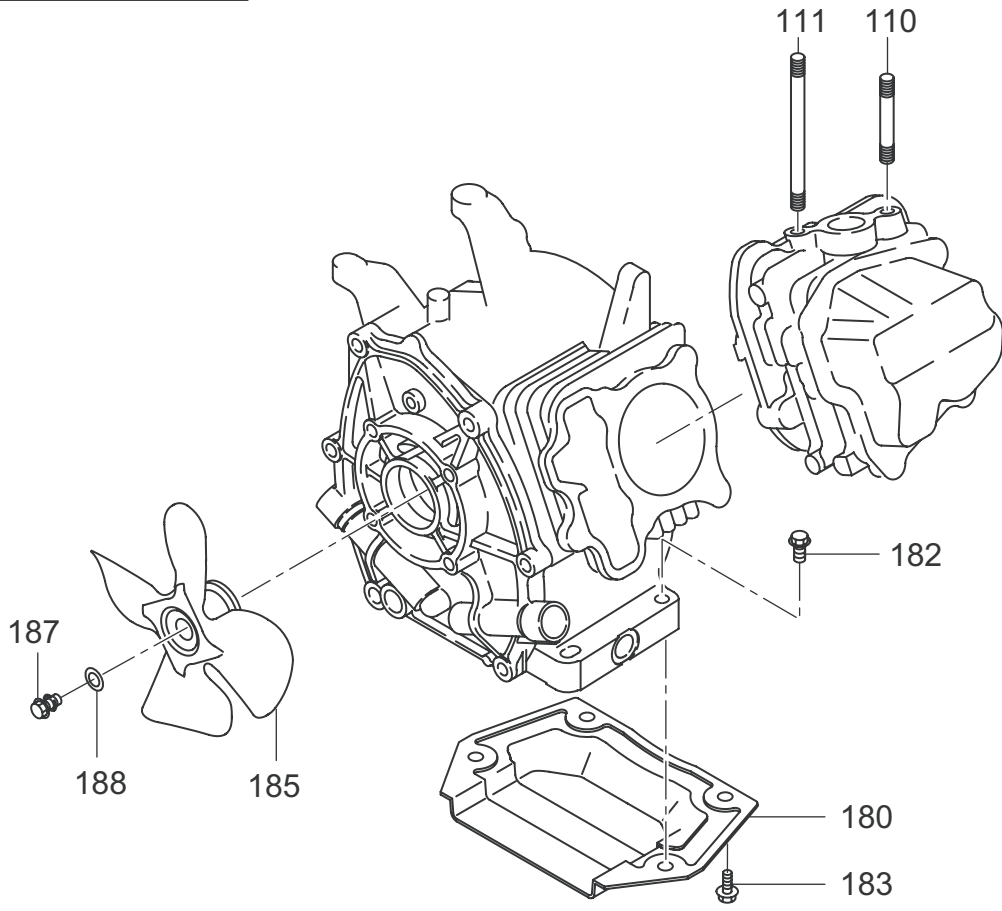




FIG. 2130

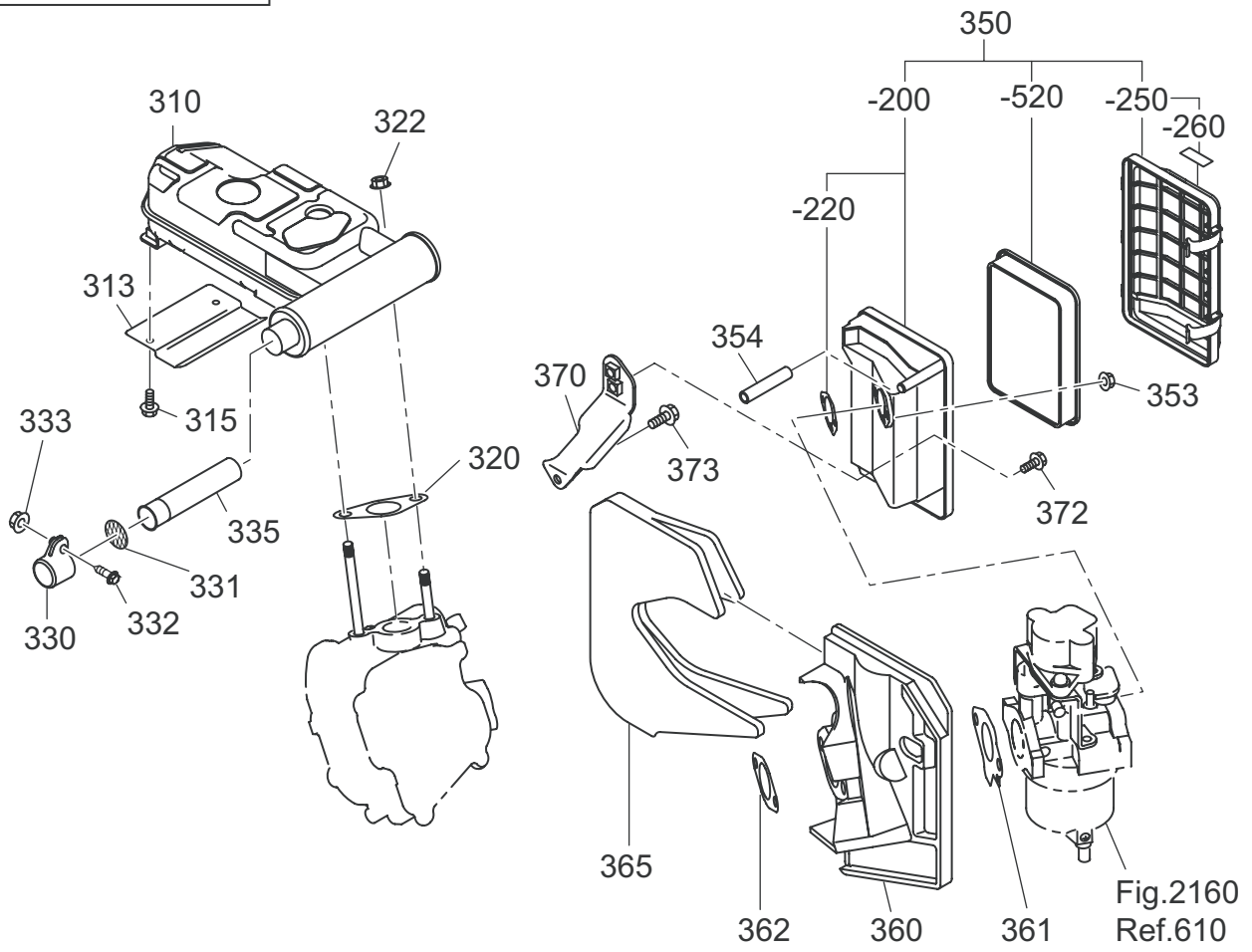




FIG. 2150

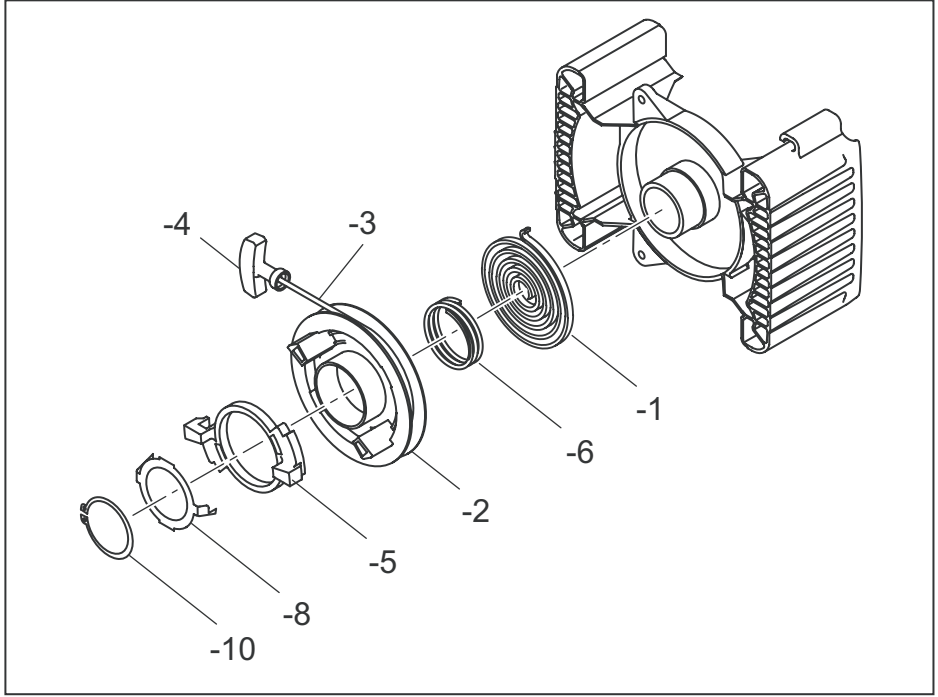
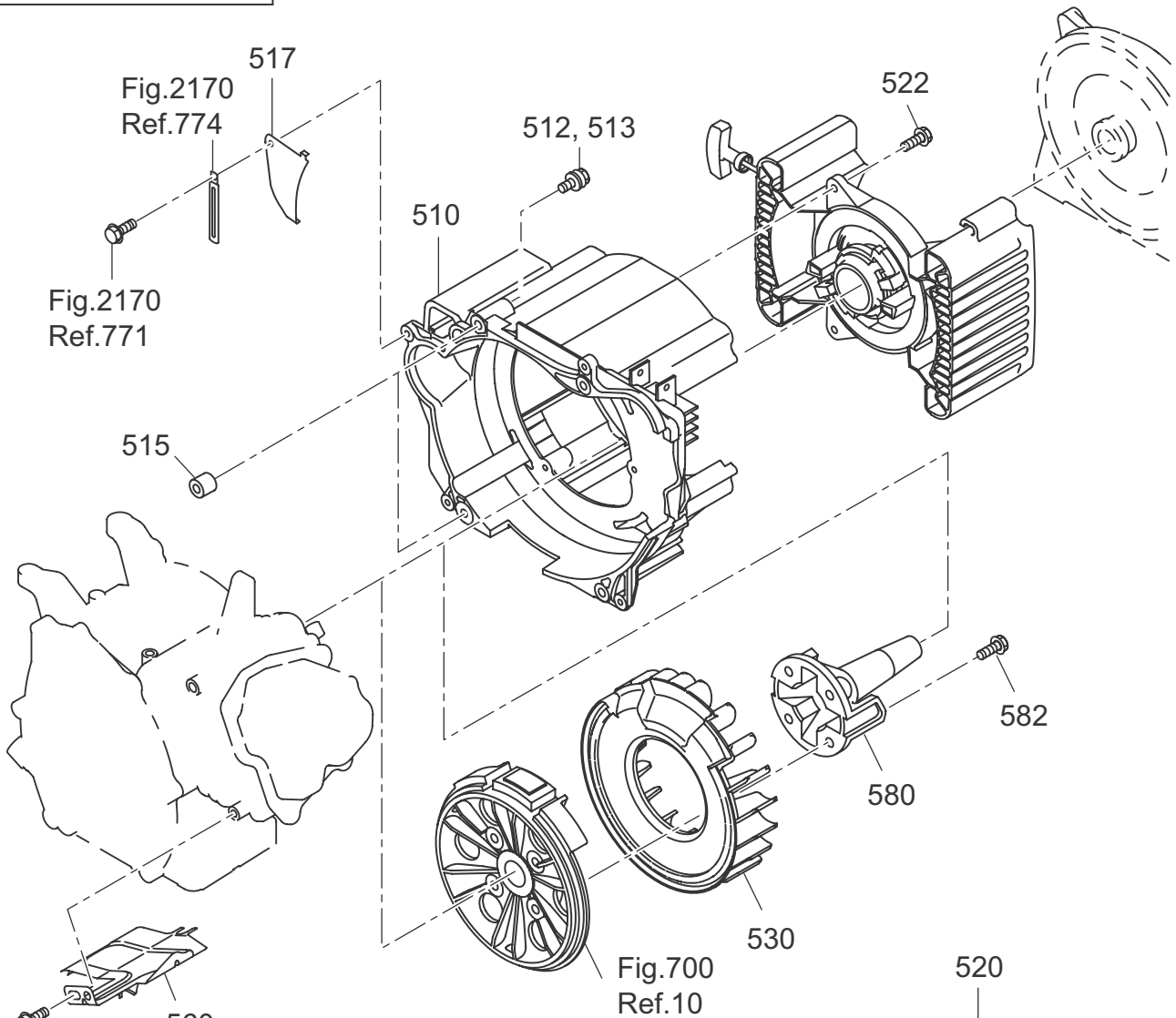




FIG. 2160

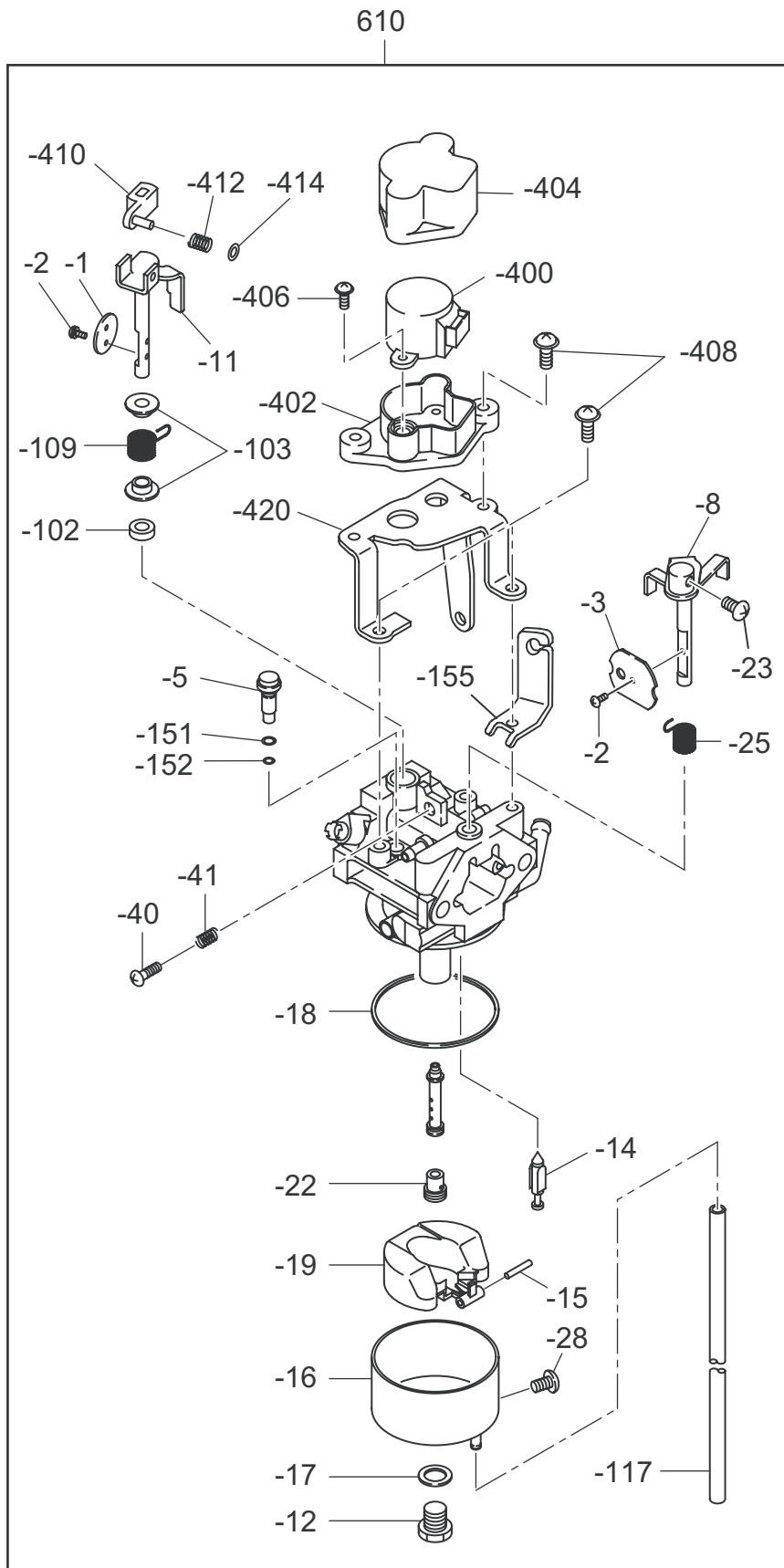






FIG. 2170

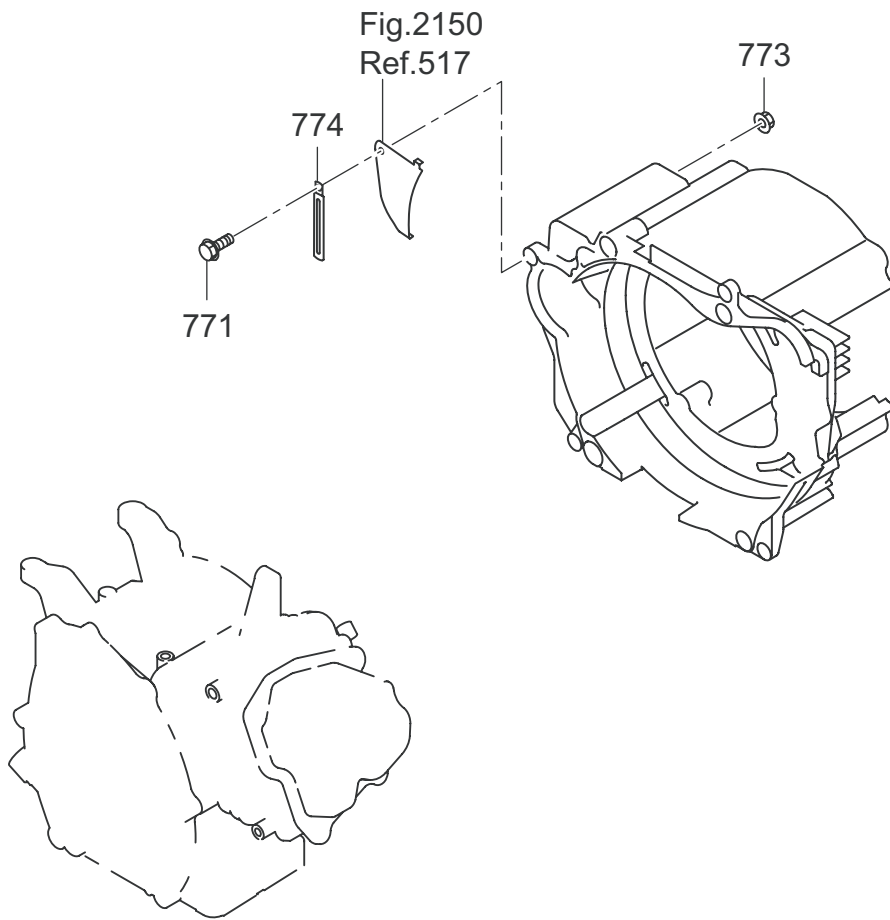




FIG. 2200

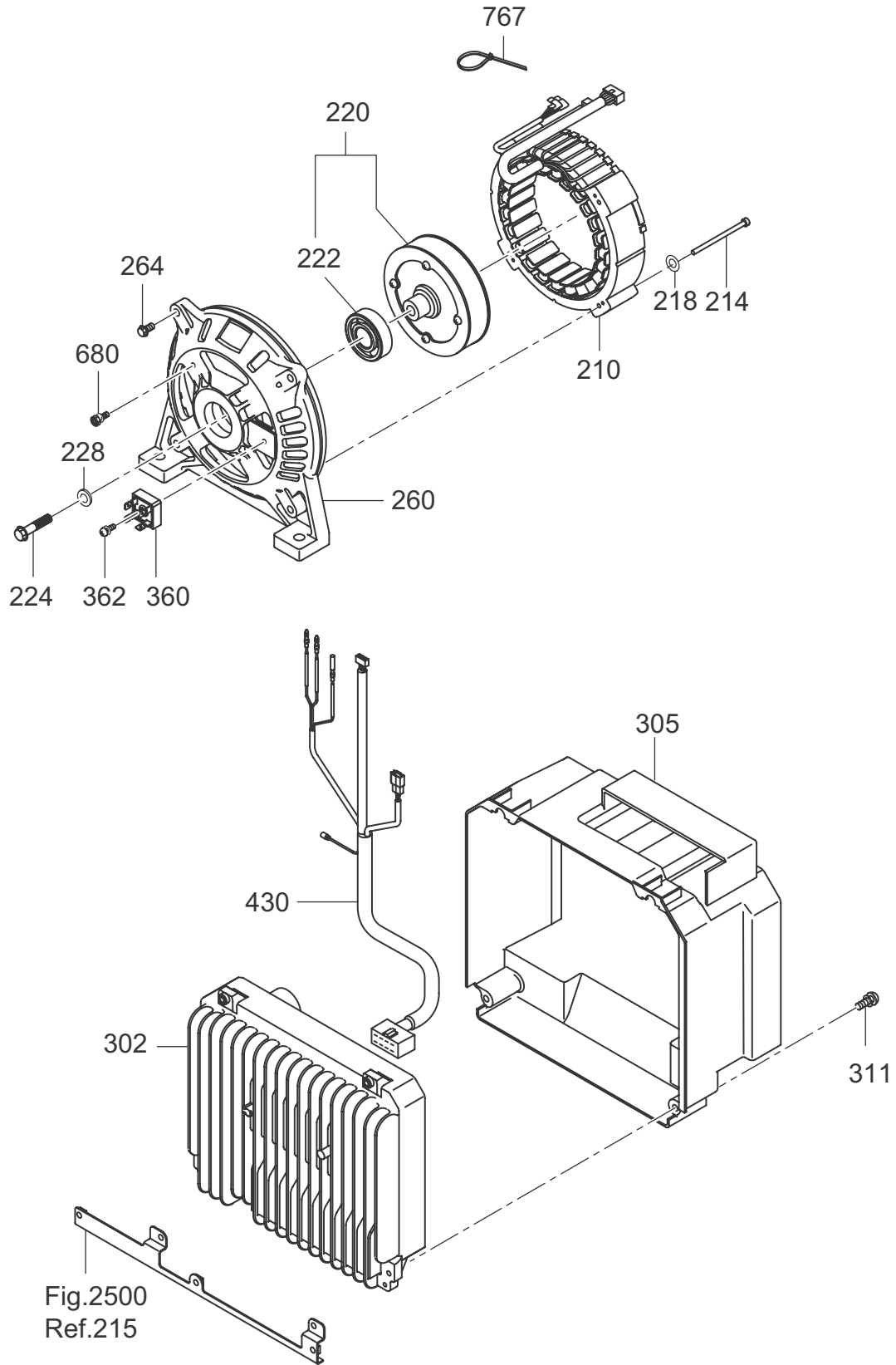




FIG. 2300

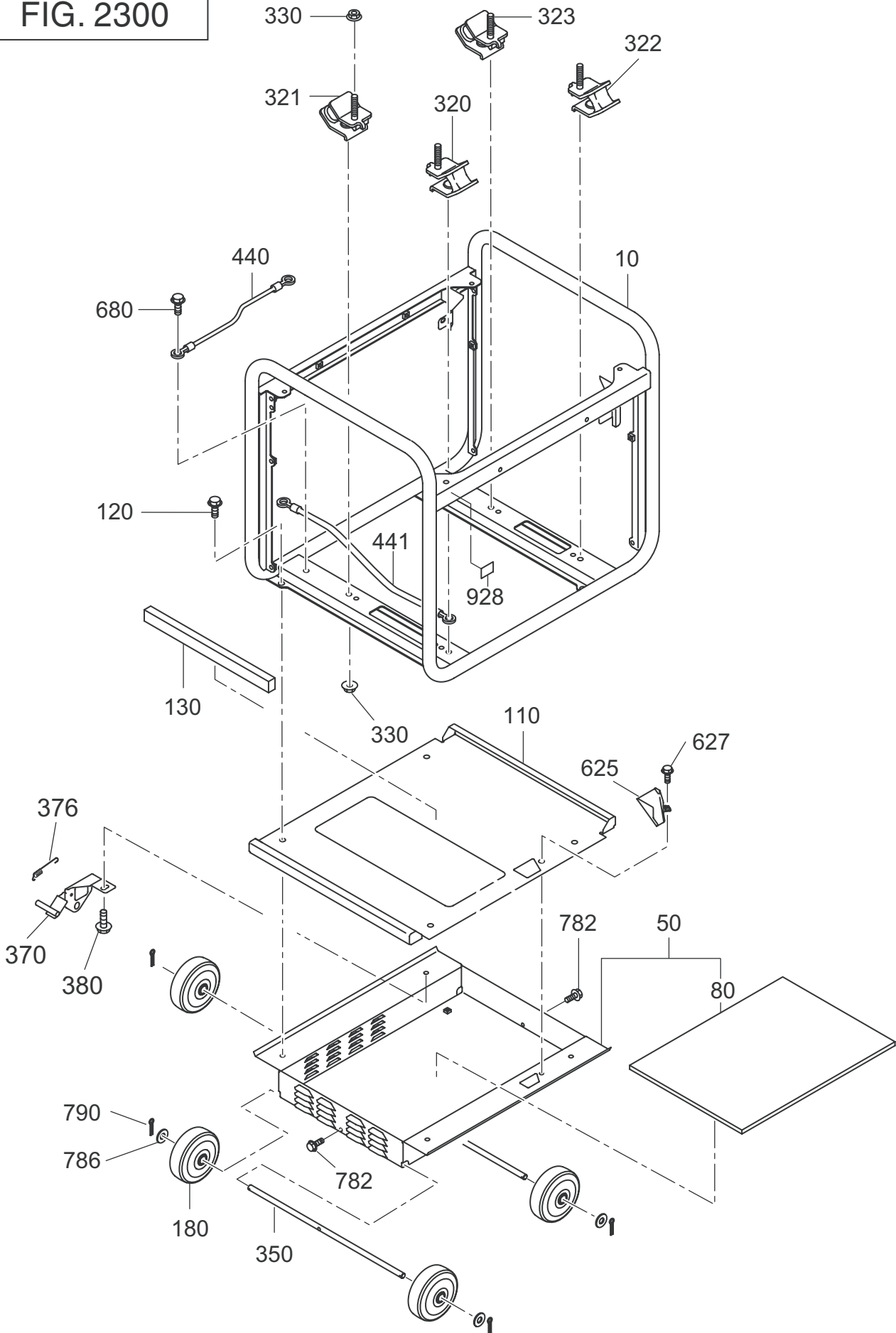
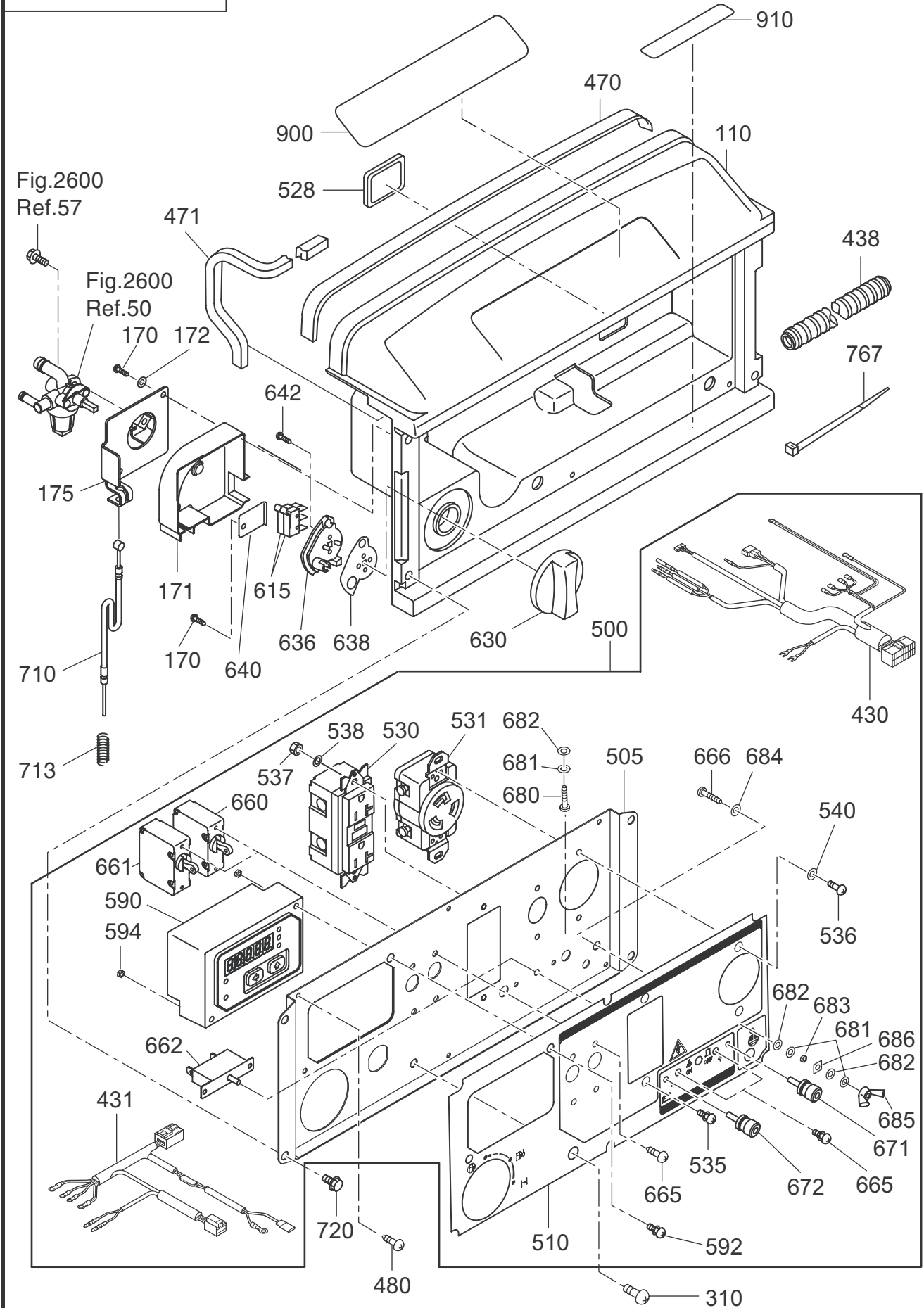




FIG. 2400





## 24 CONTROL

REF.	PART NUMBER	PART NAME	QTY	R E M A R K S	CODE NO.	INTERCHANGE P/NO.	UNIT P	FIG.
110	33B-50001-01	FRONT COVER(UPPER)CP	1		-			2400
170	015-00400-70	TAPPING SCREW	3	M4X20L	-			2400
171	33B-46001-03	COVER(COCK)	1		-			2400
172	003-10040-00	WASHER	2		-			2400
175	33B-46012-11	BRACKET(COCK)	1		-			2400
310	004-36061-60	SCREW AND WASHER AY	2	M6X1.0X16L W/W, SW	-			2400
430	34B-48015-01	WIRE HARNESS CP	1		-			2400
431	34B-48102-01	WIRE HARNESS(E/G)CP	1		-			2400
438	34G-49001-03	CORRUGATED TUBE	1		-			2400
470	34B-57311-03	SEAL SPONGE FC2	1		-			2400
471	34G-47001-03	SEAL SPONGE(C.BOX 1)	1		-			2400
480	353-49904-08	TAPPING SCREW	6		-			2400
500	34B-41C21-00	CONTROL PANEL AY	1		-			2400
505	33B-45018-01	PANEL PLATE CP	1		-			2400
510	34B-49033-03	SHEET(PANEL VR)33	1		-			2400
528	227-75001-03	GROMMET	1		-			2400
530	388-85003-01	AC RECEPTACLE	1	125V-20A	-			2400
531	356-45711-08	AC RECEPTACLE	1	125V-30A	-			2400
535	004-35041-00	SCREW AND WASHER AY	2		-			2400
536	356-59937-08	SCREW	2		-			2400
537	002-27040-00	NUT	2		-			2400
538	003-10040-00	WASHER	2		-			2400
540	326-00335-08	SPRING WASHER	2		-			2400
590	KU3-11760-11	MONITOR C/U CP(INV1)	1		-			2400
592	013-10400-80	SCREW AND WASHER AY	2		-			2400
594	002-17040-00	NUT	2		-			2400
615	33K-41811-03	MICRO SWITCH	2		-			2400
630	33K-42010-03	CONTROL DIAL	1		-			2400
636	33K-42020-03	CHOKE REEL	1		-			2400
638	33K-42030-23	PLATE	1		-			2400
640	33B-46015-01	BRACKET(MICRO)	1		-			2400
642	33K-41814-08	TAPPING SCREW	2		-			2400
660	32B-43161-01	CIRCUIT BREAKER	1		-			2400
661	32B-43162-01	CIRCUIT BREAKER	1		-			2400
662	32B-43041-03	CIRCUIT BREAKER	1	DC 10A	-			2400
665	31B-79011-03	SCREW & WASHER AY	6		-			2400
666	32B-43061-03	SCREW	1		-			2400
671	363-45701-08	TERMINAL BOLT	1	RED 20A	-			2400
672	363-45700-08	TERMINAL BOLT	1	BLACK 20A	-			2400
680	388-88001-03	SCREW AND WASHER AY	1		-			2400

FIG. 2400

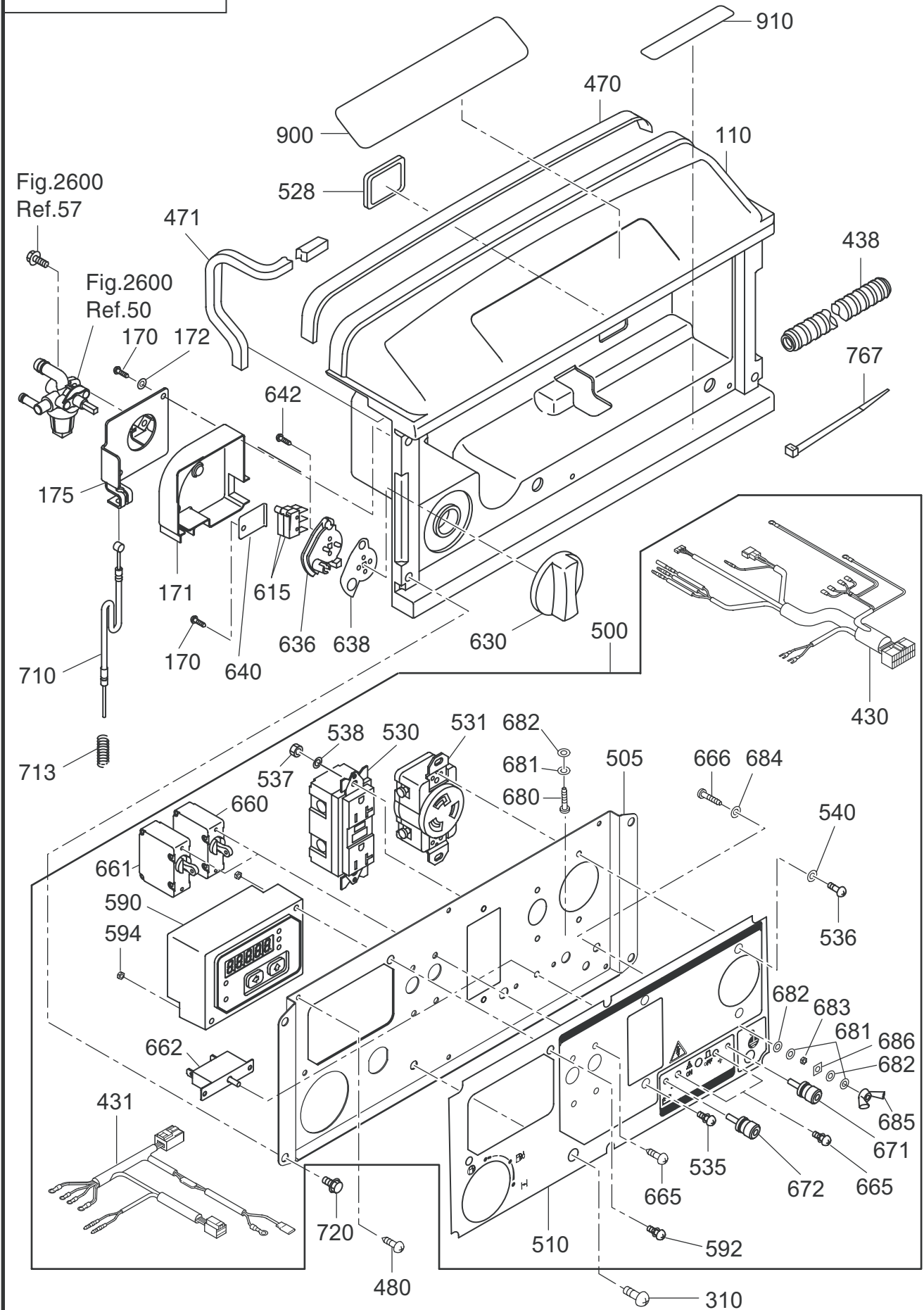




FIG. 2500

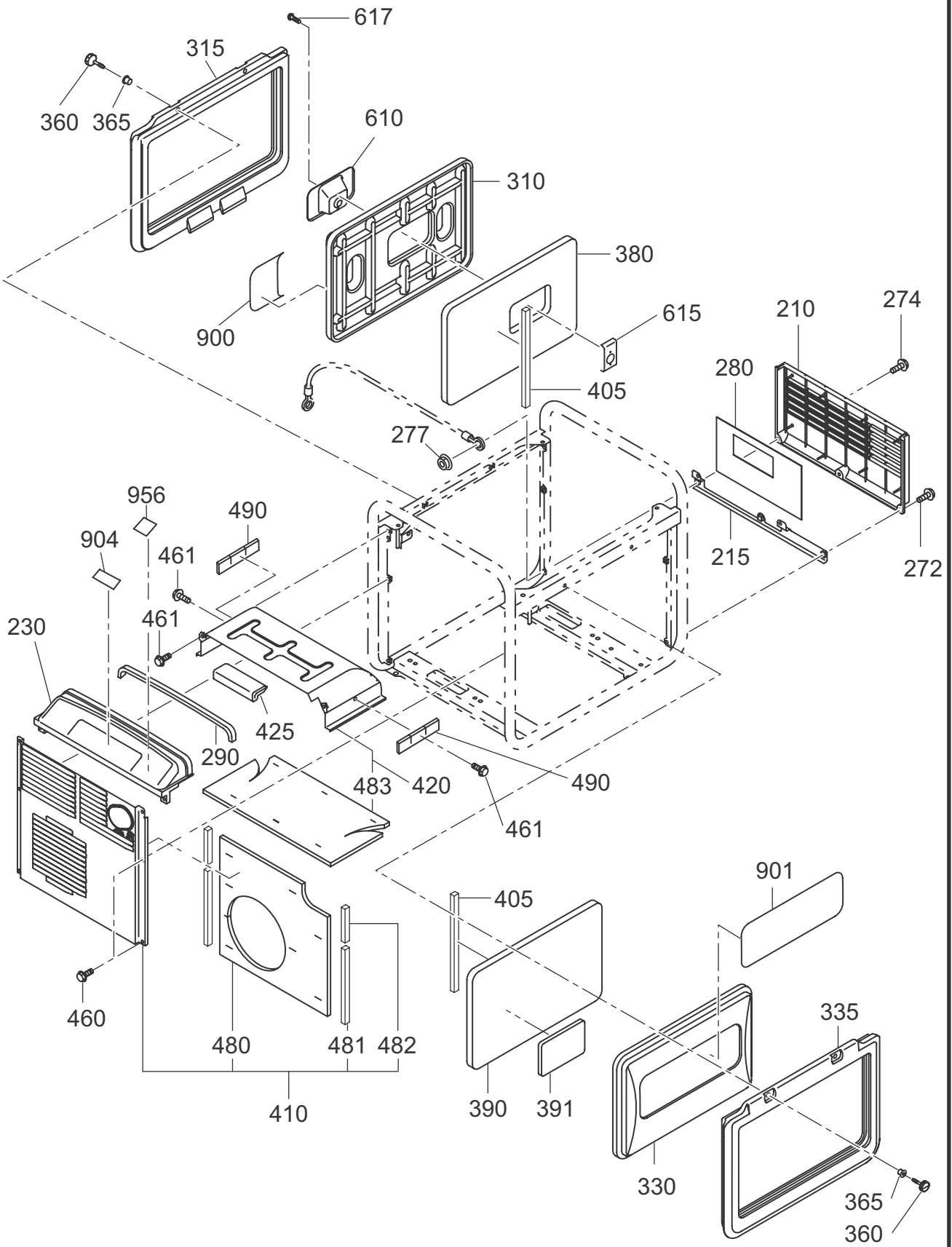




FIG. 2510

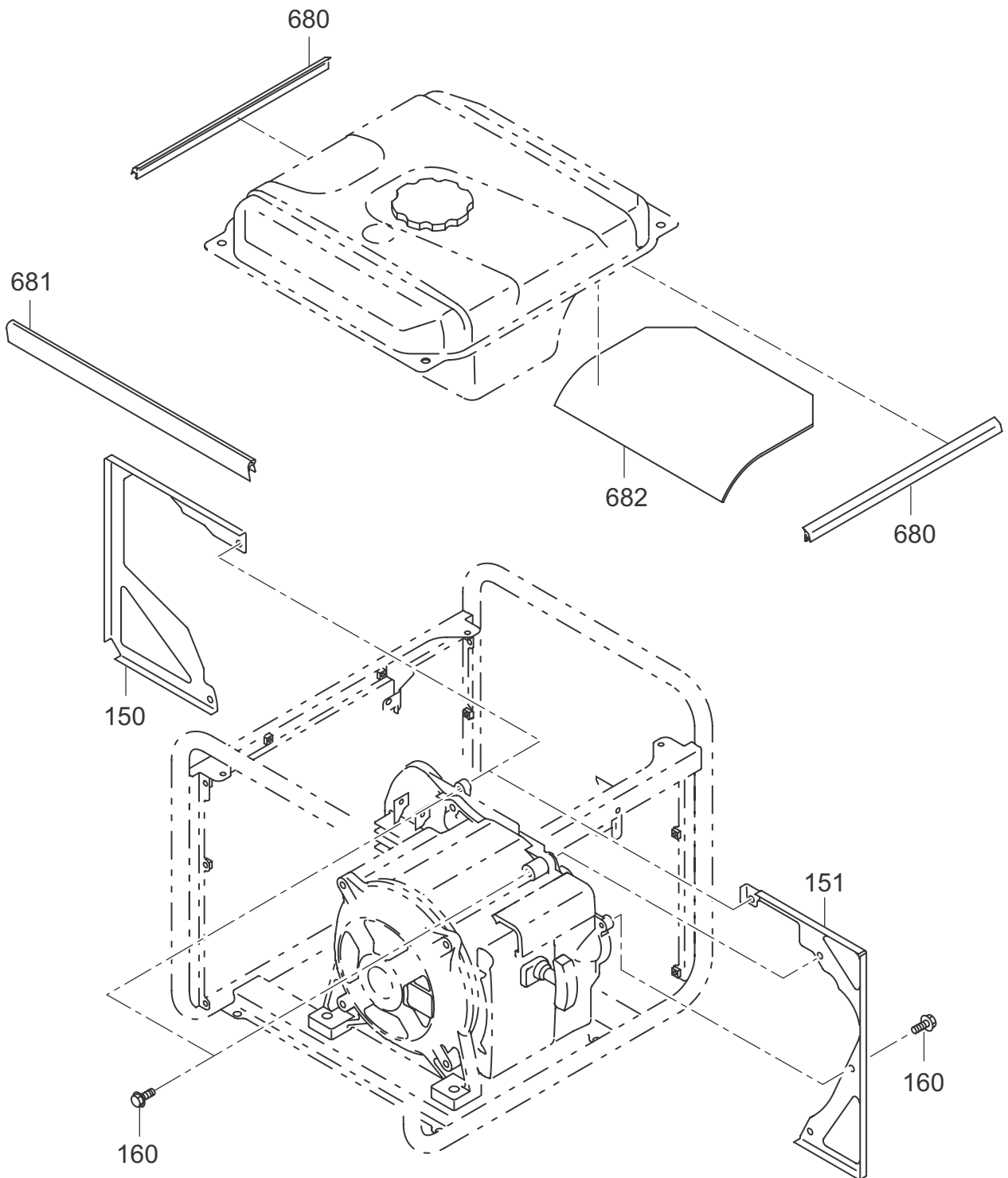




FIG. 2600

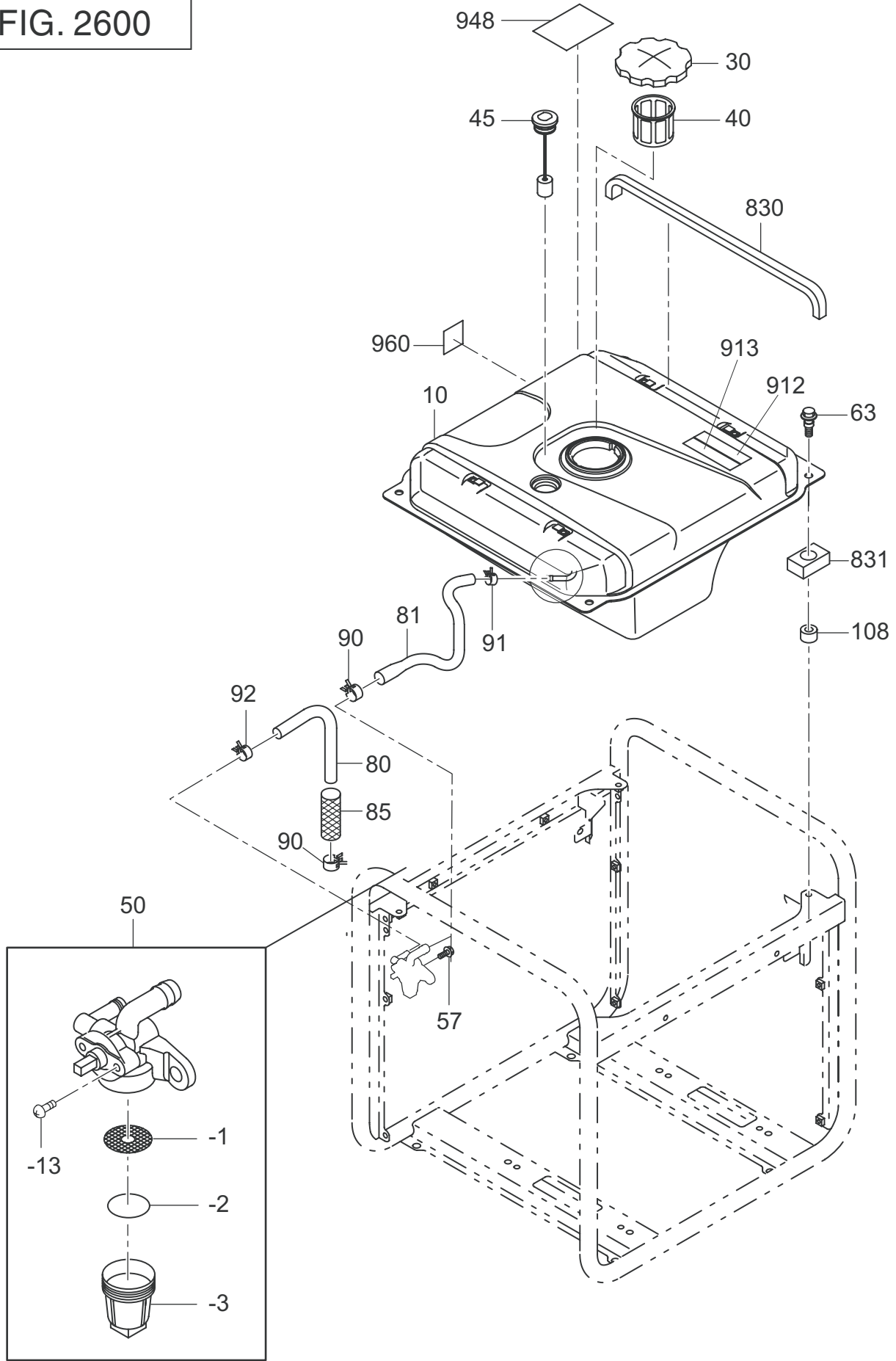






FIG. 2900

