



PARTS CATALOG

Robin

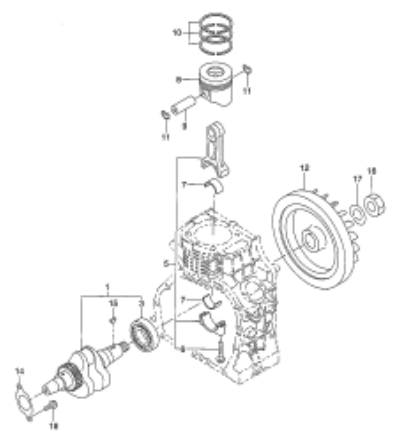
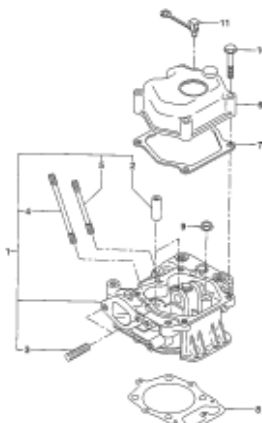
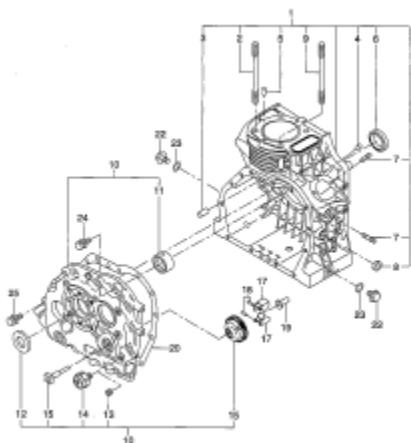
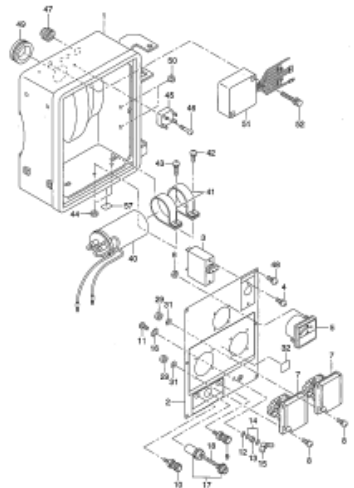
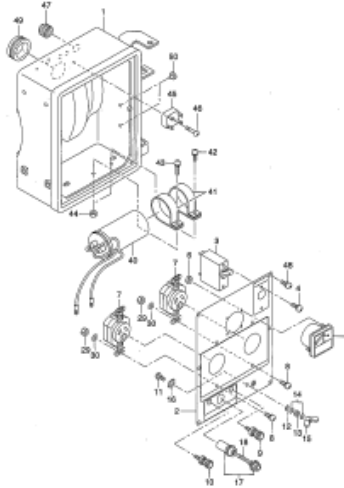
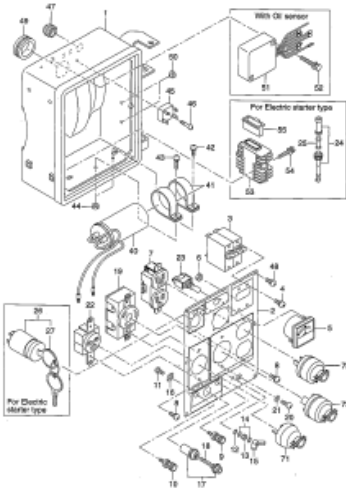
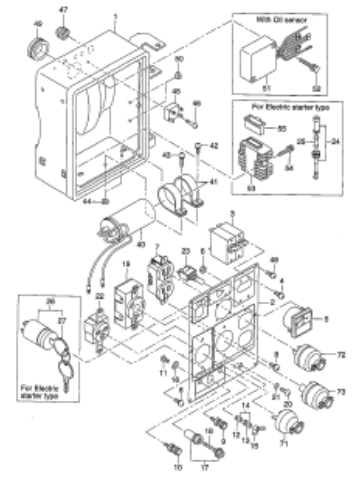
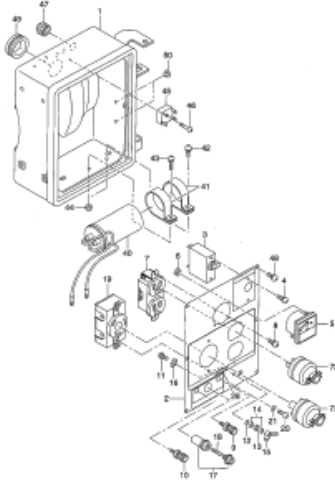
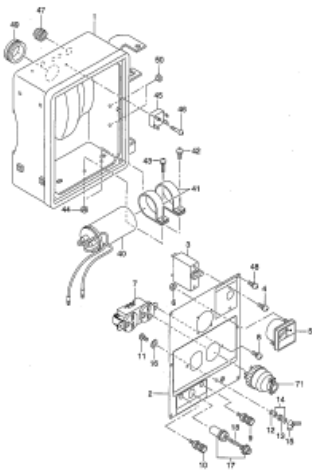
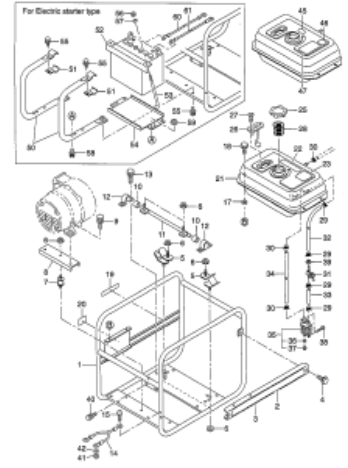
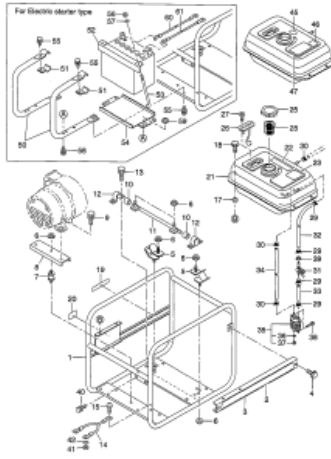
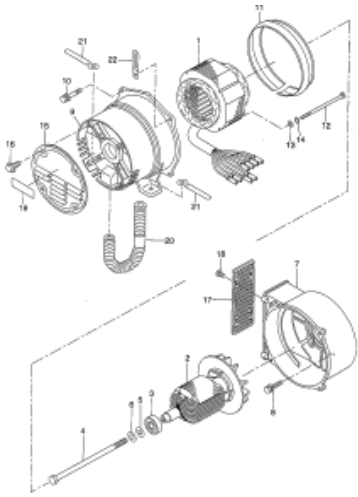
Generator

Model

RGD2510

 **FUJI HEAVY INDUSTRIES LTD.**

ISSUE EMD-GP1515



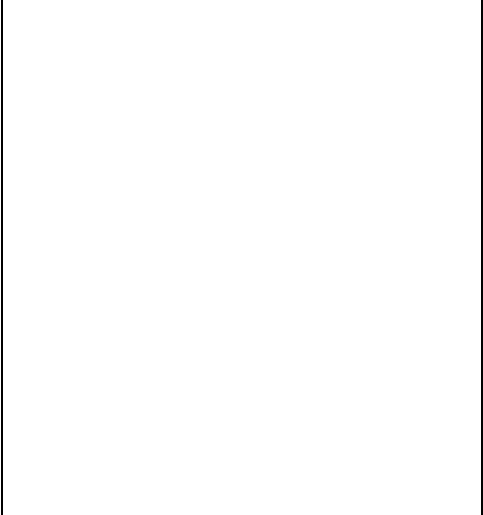
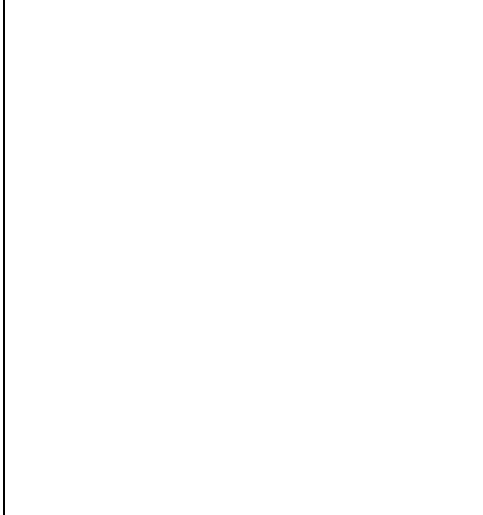
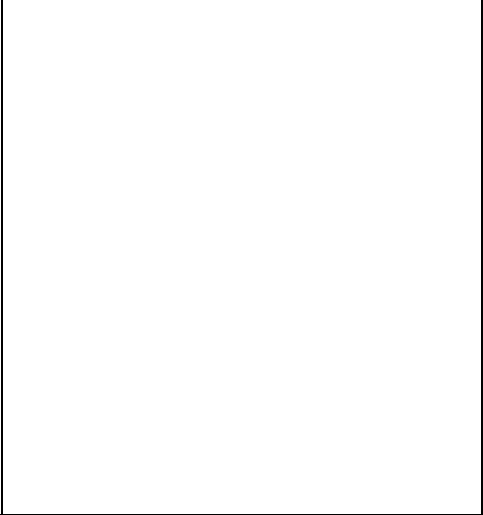
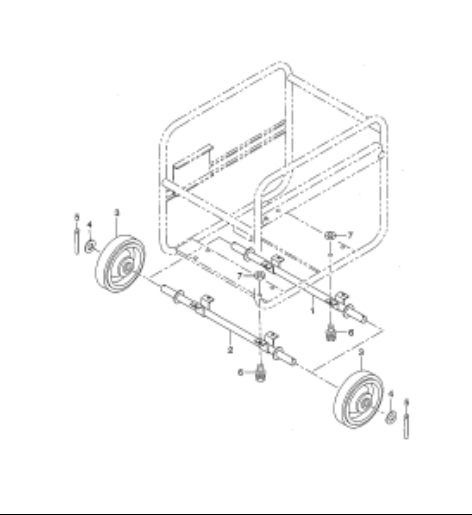
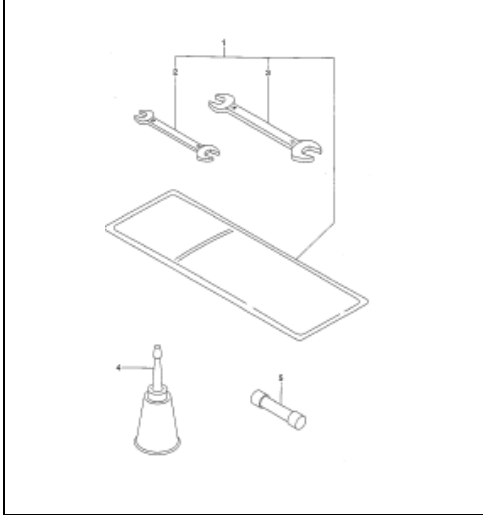
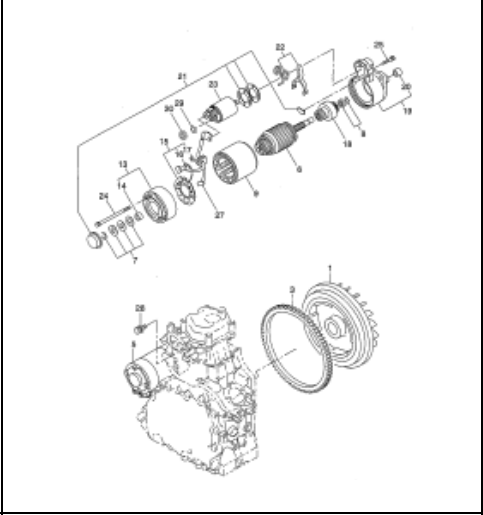
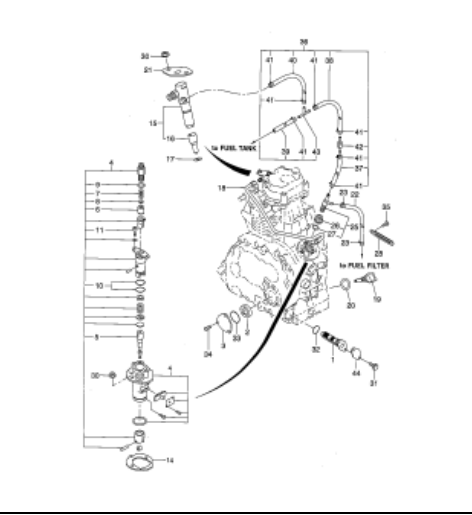
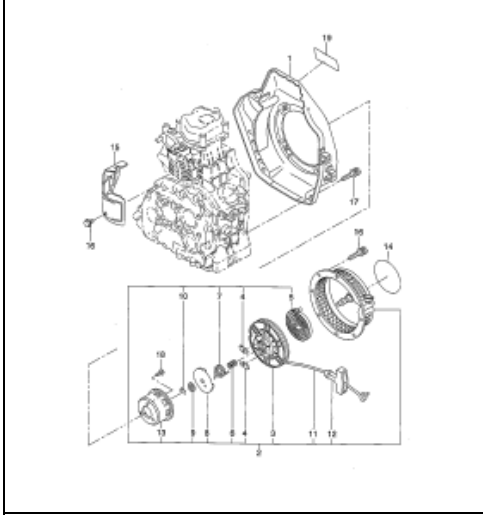
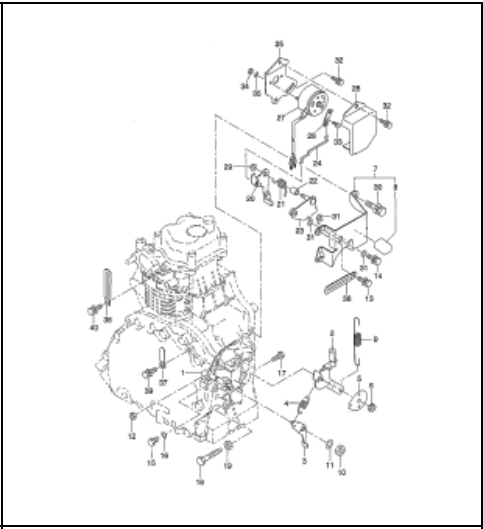
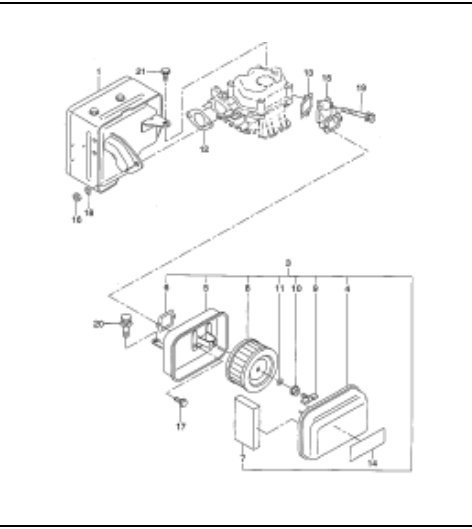
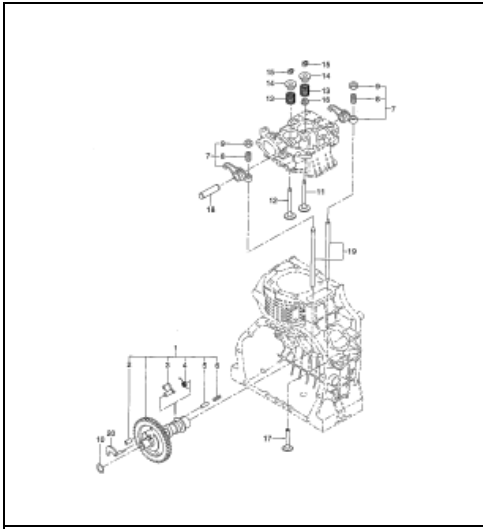


FIG.1 GENERATOR GROUP

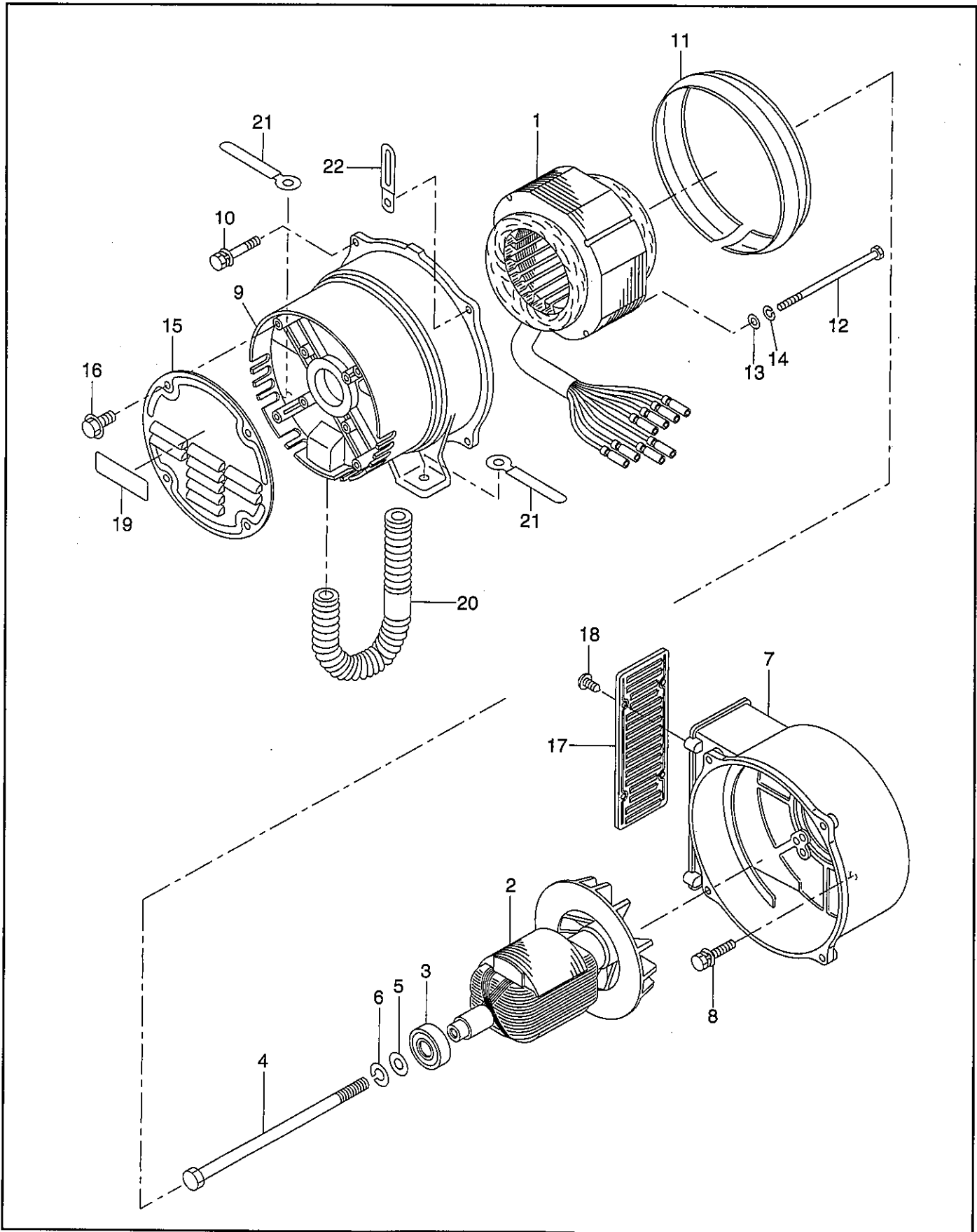


FIG.2 PIPE FRAME and FUEL TANK GROUP

Interchangeability

| Ref. No. | Part Number | Description | Q'ty | Execution |
|----------|--------------|---|------|-----------|
| 1 | 391-31001-31 | PIPE FRAME, compl. | 1 | |
| 2 | 391-87101-03 | LABEL (RGD2510) | 1 | |
| 3 | 391-31101-21 | SIDE PLATE, compl. | 1 | |
| 4 | 011-00600-80 | FLANGE BOLT | 2 | |
| 5 | 391-37001-21 | MOUNT, compl., engine side | 2 | |
| 6 | 002-38080-00 | FLANGE NUT | 7 | |
| 7 | 391-37101-01 | MOUNT, compl., generator side | 1 | |
| 8 | 391-37500-21 | GENERATOR BASE, compl. | 1 | |
| 9 | 001-14082-50 | BOLT and WASHER ASS'Y | 2 | |
| 10 | 391-38001-03 | RUBBER | 2 | |
| 11 | 391-38000-01 | SHAFT, stopper, compl. | 1 | |
| 12 | 391-38500-01 | STOPPER, compl. | 2 | |
| 13 | 001-14061-60 | BOLT and WASHER ASS'Y | 4 | |
| 14 | 391-39001-21 | EARTH WIRE, compl. | 1 | |
| 15 | 376-39100-01 | SCREW and WASHER ASS'Y (M5 x 10mm) | 1 | |
| 17 | 391-39000-13 | RUBBER, tank | 4 | |
| 18 | 011-00602-20 | FLANGE BOLT | 4 | |
| 19 | 073-20048-60 | LABEL, hot & gas For FRANCE | 1 | |
| 20 | 073-20049-20 | LABEL (102) For FRANCE | 1 | |
| 21 | 255-60210-01 | FUEL TANK, compl. | 1 | |
| 22 | 377-92500-03 | LABEL, caution | 1 | |
| 23 | 391-94002-03 | LABEL, fuel only | 1 | |
| 25 | 043-04300-15 | FUEL TANK CAP, compl. | 1 | |
| 26 | 064-80007-00 | FUEL GAUGE, compl. | 1 | |
| 27 | 014-50500-40 | SCREW, counter head | 2 | |
| 28 | 243-66101-01 | FUEL FILTER | 1 | |
| 29 | 056-11100-20 | HOSE CLAMP | 4 | |
| 30 | 056-10800-10 | HOSE CLAMP | 3 | |
| 31 | 235-64601-20 | FUEL COCK ASS'Y | 1 | |
| 32 | 085-10600-00 | RUBBER PIPE ($\phi 6 \times \phi 12 \times 180$ mm) | 1 | |
| 33 | 085-10600-00 | RUBBER PIPE ($\phi 6 \times \phi 12 \times 70$ mm) | 1 | |
| 34 | 085-14500-00 | RUBBER PIPE ($\phi 4.5 \times \phi 9 \times 260$ mm) | 1 | |
| *35 | 243-62101-20 | FUEL FILTER ASS'Y Includes items 36 and 37 | 1 | |
| 36 | 228-62112-08 | PACKING | 1 | |
| 37 | 228-62111-08 | PLUG | 1 | |
| 38 | 011-00600-20 | FLANGE BOLT | 2 | |
| 39 | 002-38100-00 | FLANGE NUT | 1 | |
| 40 | 001-14061-60 | BOLT and WASHER ASS'Y | 3 | |
| 41 | 002-19040-00 | NUT | 1 | |
| 42 | 003-20040-00 | SPRING WASHER | 1 | |
| 45 | 073-20049-10 | LABEL, light oil For FRANCE | 1 | |
| 46 | 073-20045-20 | LABEL, oil caution For FRANCE | 1 | |
| 47 | 073-20045-10 | LABEL, symbol-tank For FRANCE | 1 | |
| 50 | 391-33006-31 | BATTERY FRAME, compl. For Electric starter type | 2 | |

FIG.3-1 CONTROL BOX (50Hz-220V) GROUP

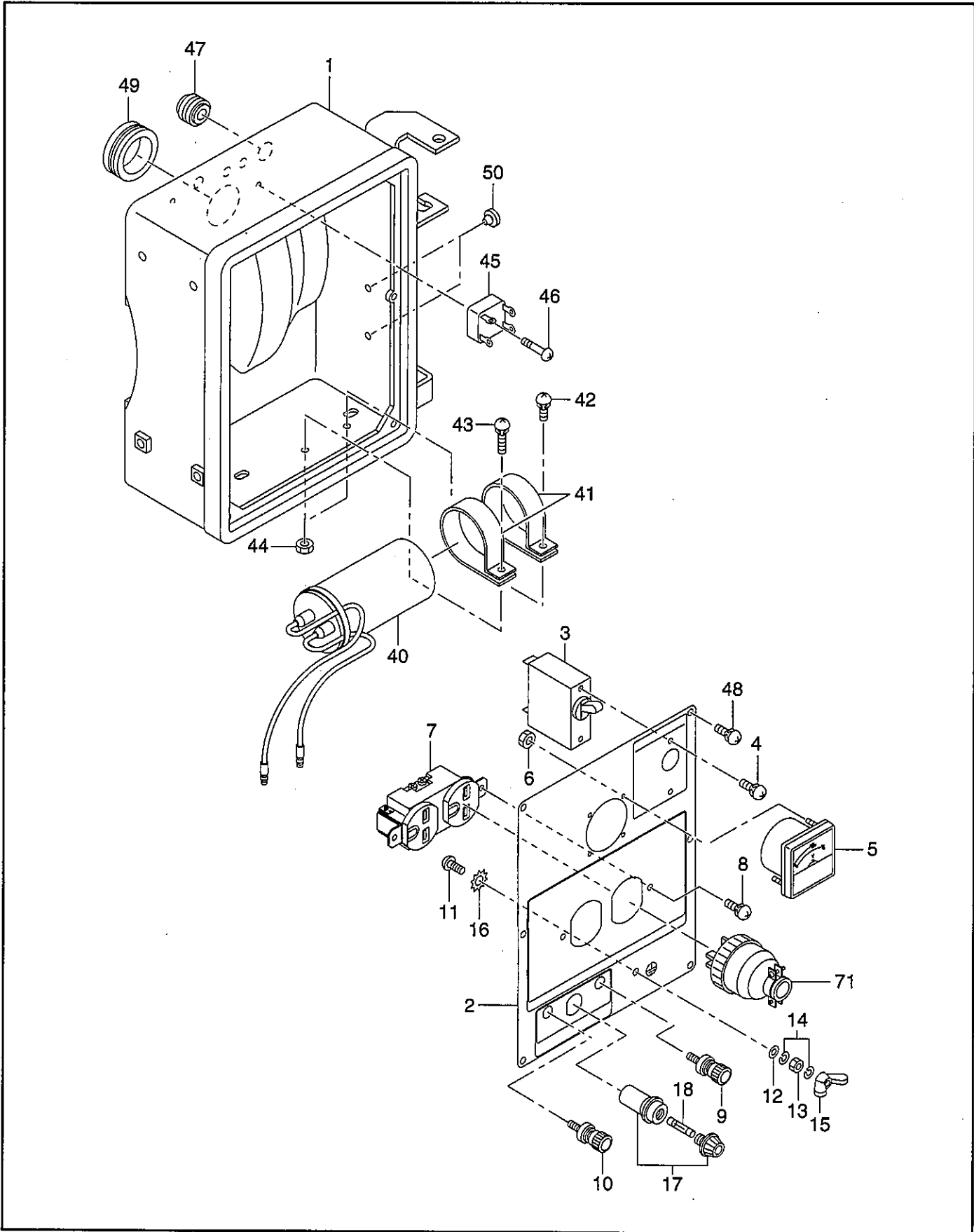


FIG.3-2 CONTROL BOX (60Hz-110V) GROUP

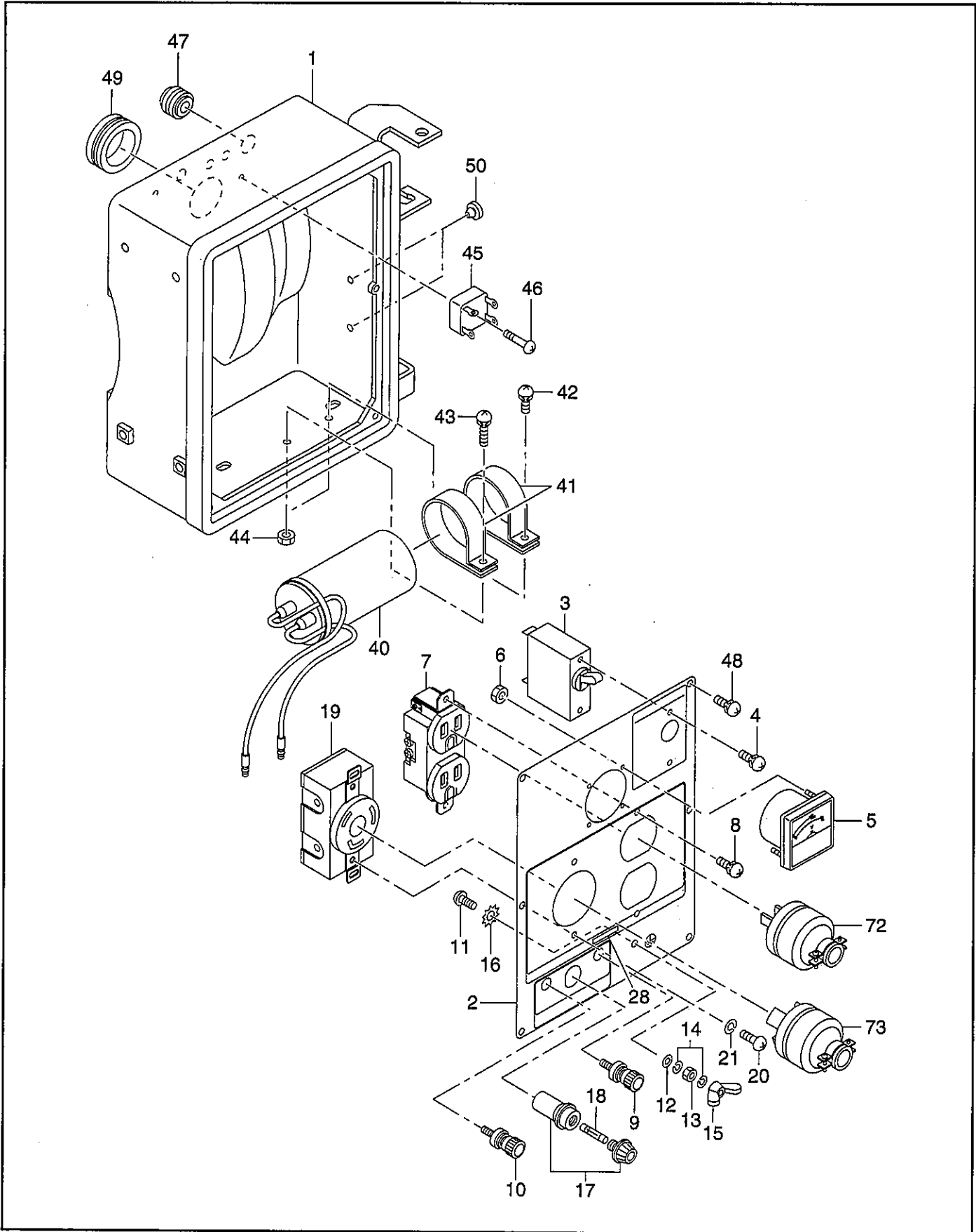


FIG.3-3 CONTROL BOX (60Hz-110V/220V) GROUP

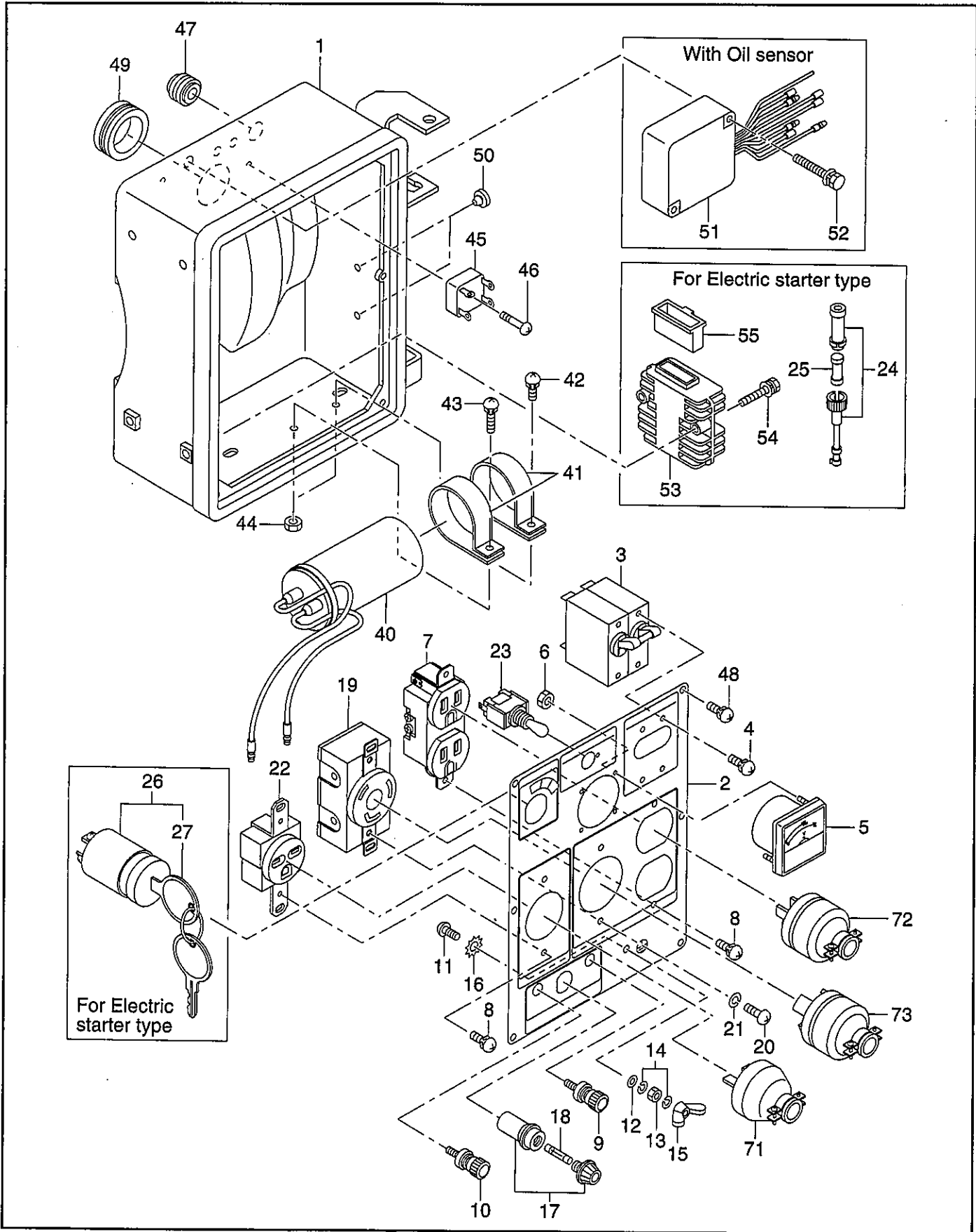


FIG.3-3 CONTROL BOX (60Hz-110V/220V) GROUP

└ Interchangeability

| Ref. No. | Part Number | Description | Q'ty | Execution |
|----------|--------------|--|------|-----------|
| *1 | 391-76510-00 | CONTROL BOX ASS'Y For Recoil starter type Without Oil sensor Includes items 1 thru 23 and 40 thru 50 | 1 | |
| *1 | 391-76503-00 | CONTROL BOX ASS'Y For Recoil starter type With Oil sensor Includes items 1 thru 23 and 40 thru 52 | 1 | |
| *1 | 391-76504-00 | CONTROL BOX ASS'Y For Electric starter type With Oil sensor Includes items 1 thru 27 and 40 thru 55 | 1 | |
| 1 | 391-73003-01 | CONTROL BOX, compl. | 1 | |
| *2 | 391-41002-10 | CONTROL PANEL ASS'Y For Recoil starter type Includes items 1 thru 23 | 1 | |
| *2 | 391-41047-00 | CONTROL PANEL ASS'Y For Electric starter type Includes items 1 thru 27 | 1 | |
| 2 | 391-41002-01 | CONTROL PANEL A ASS'Y For Recoil starter type | 1 | |
| 2 | 391-41034-11 | CONTROL PANEL A ASS'Y For Electric starter type | 1 | |
| 3 | 391-43004-03 | CIRCUIT BREAKER(10A) | 1 | |
| 4 | 004-35030-60 | SCREW and WASHER ASS'Y | 4 | |
| 5 | 391-47802-01 | AC VOLTMETER (120V CLASS) | 1 | |
| 6 | 002-17030-00 | NUT | 2 | |
| 7 | 378-45737-08 | AC RECEPTACLE (125V-15A x 2) | 1 | |
| 8 | 004-35041-00 | SCREW and WASHER ASS'Y | 4 | |
| 9 | 363-45701-08 | TERMINAL BOLT (color : RED) | 1 | |
| 10 | 363-45700-08 | TERMINAL BOLT (color : BLACK) | 1 | |
| 11 | 356-49907-08 | SCREW (M5 x 14mm) | 1 | |
| 12 | 353-49903-08 | WASHER | 1 | |
| 13 | 353-49902-08 | NUT (M5) | 1 | |
| 14 | 332-00050-08 | SPRING WASHER | 2 | |
| 15 | 353-49901-08 | WING NUT (M5) | 1 | |
| 16 | 003-30050-00 | LOCK WASHER | 1 | |
| 17 | 320-59855-08 | FUSE HOLDER (DC) | 1 | |
| 18 | 008-02103-00 | FUSE (10A) | 1 | |
| 19 | 353-45703-08 | AC RECEPTACLE (250V-30A) | 1 | |
| 20 | 353-49905-08 | SCREW(M3.5 x 8mm) | 2 | |
| 21 | 326-00335-08 | SPRING WASHER | 2 | |
| 22 | 378-45738-08 | AC RECEPTACLE (250V-15A) | 1 | |
| 23 | 391-45612-01 | SWITCH ASS'Y | 1 | |
| 24 | 385-45517-08 | FUSE HOLDER (250V-10A) For Electric starter type | 1 | |
| 25 | 385-45518-08 | FUSE (15A) For Electric starter type | 1 | |
| *26 | 066-00003-30 | SWITCH For Electric starter type Includes item 27 | 1 | |
| 27 | 066-00099-80 | KEY | 2 | |
| 40 | 391-76301-01 | CONDENSER (24 μ F) | 1 | |
| 41 | 30G-47605-08 | CONDENSER BRACKET | 2 | |

FIG.3-3 CONTROL BOX (60Hz-110V/220V) GROUP

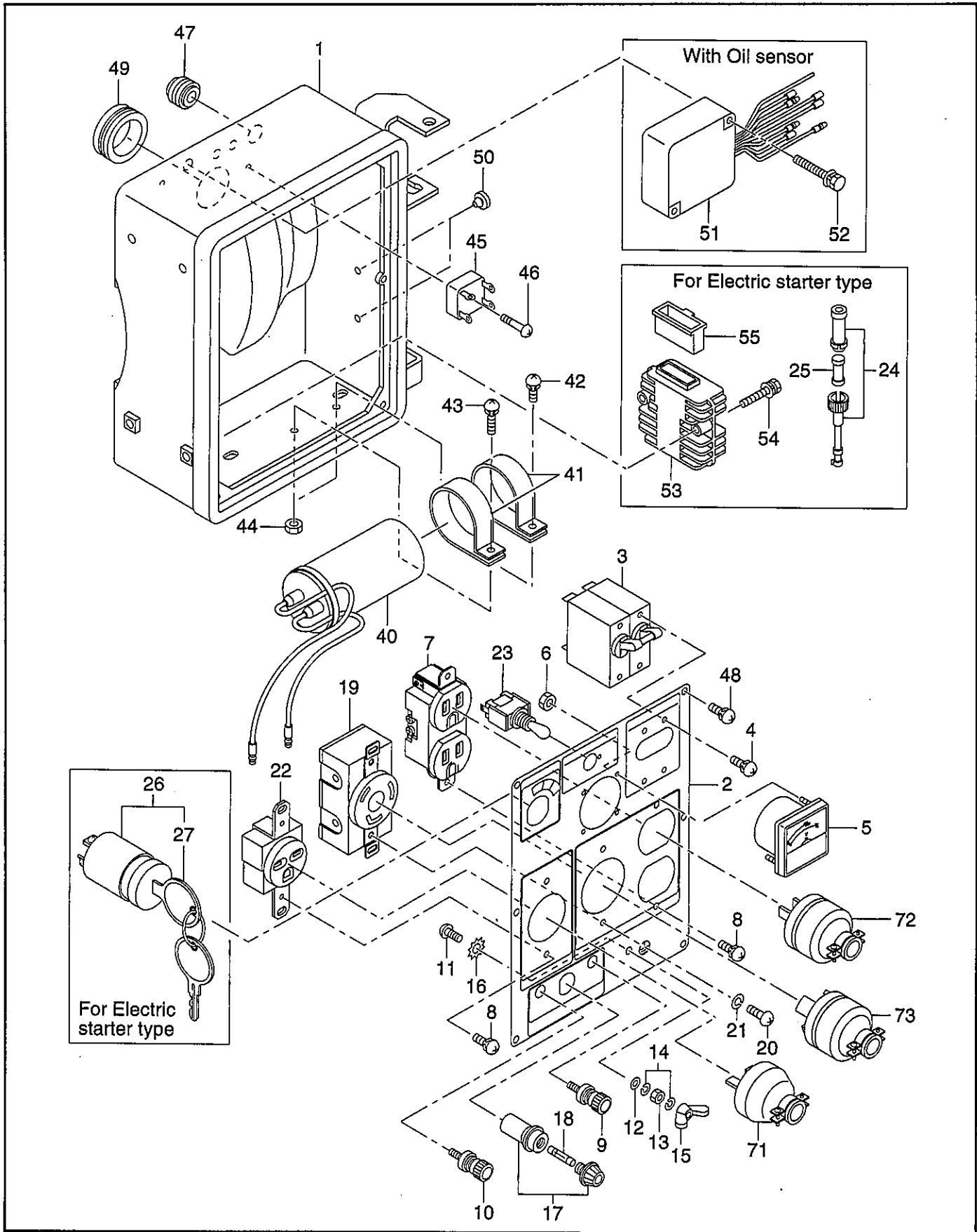


FIG.3-4 CONTROL BOX (AUSTRALIA, 50Hz-220V) GROUP

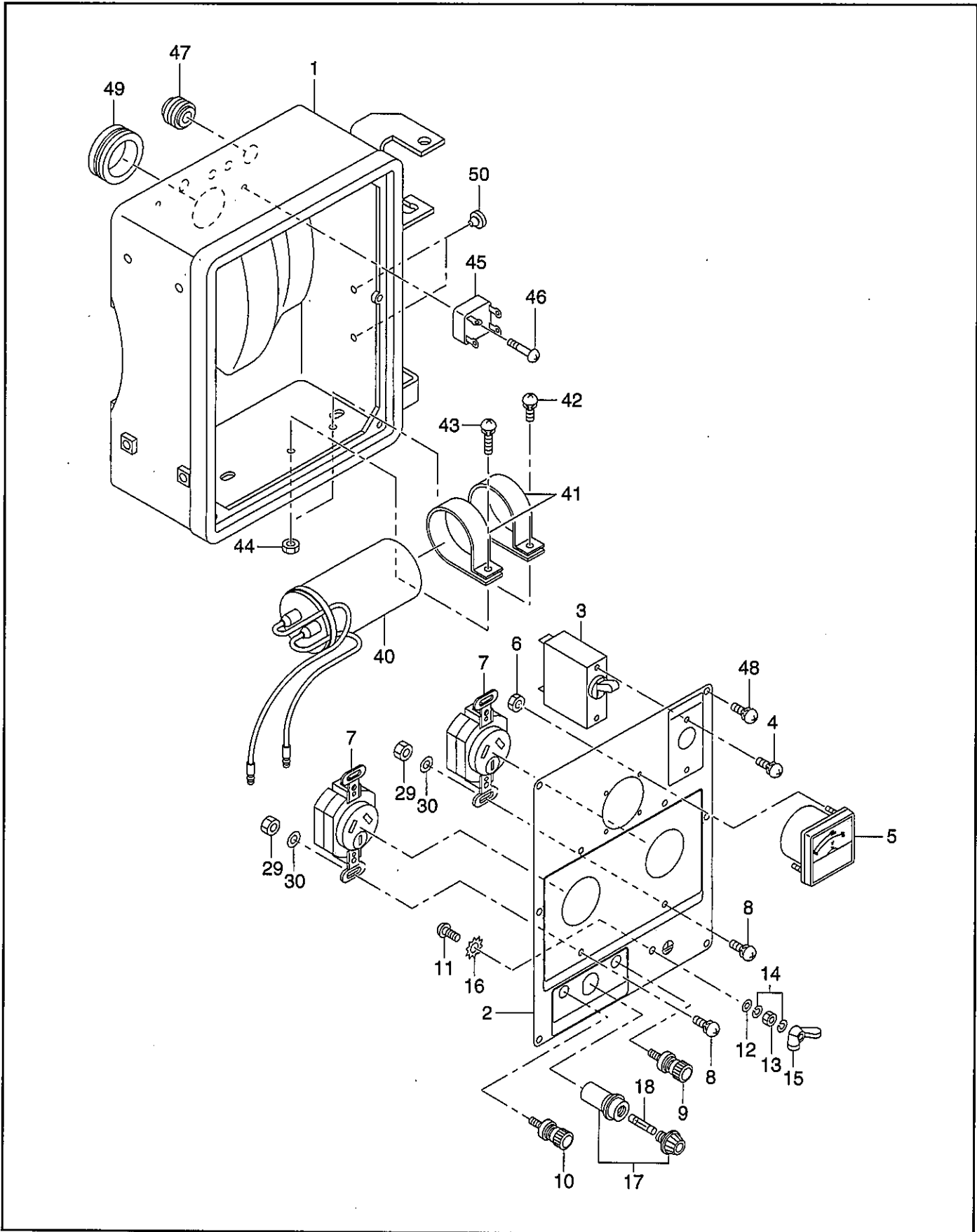


FIG.3-5 CONTROL BOX (FRANCE, 50Hz-230V) GROUP

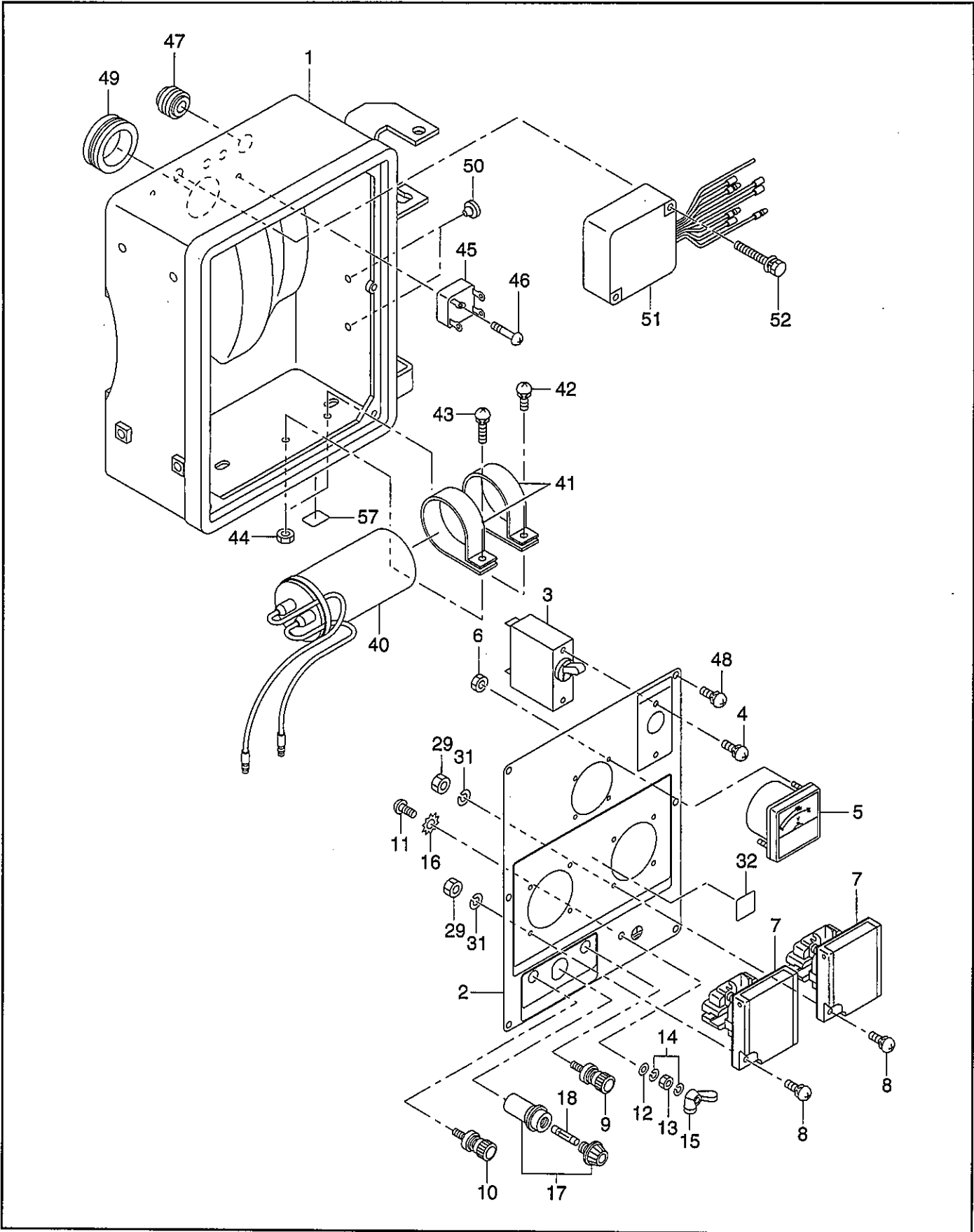


FIG.4 CRANKCASE GROUP

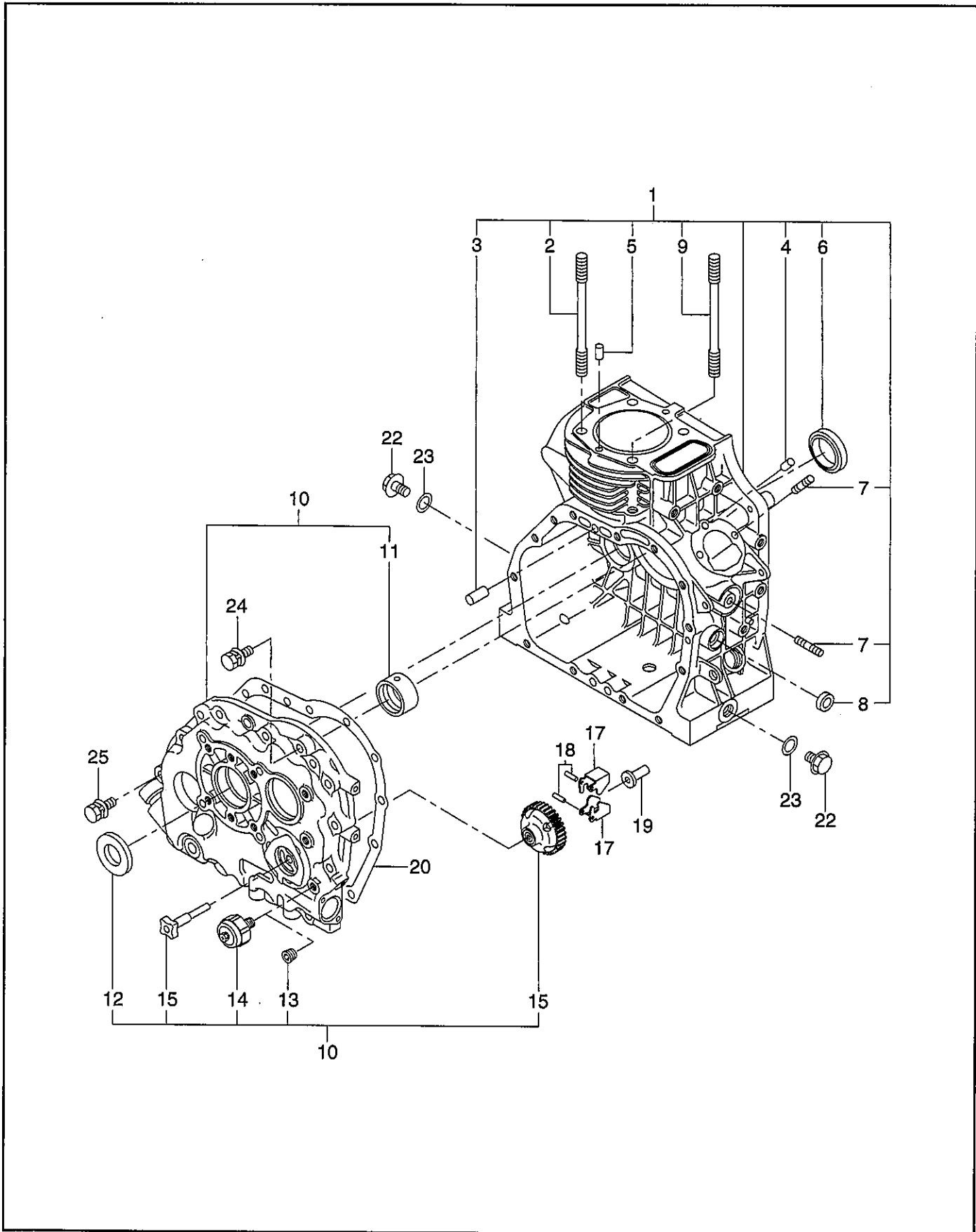


FIG.5 CYLINDER HEAD GROUP

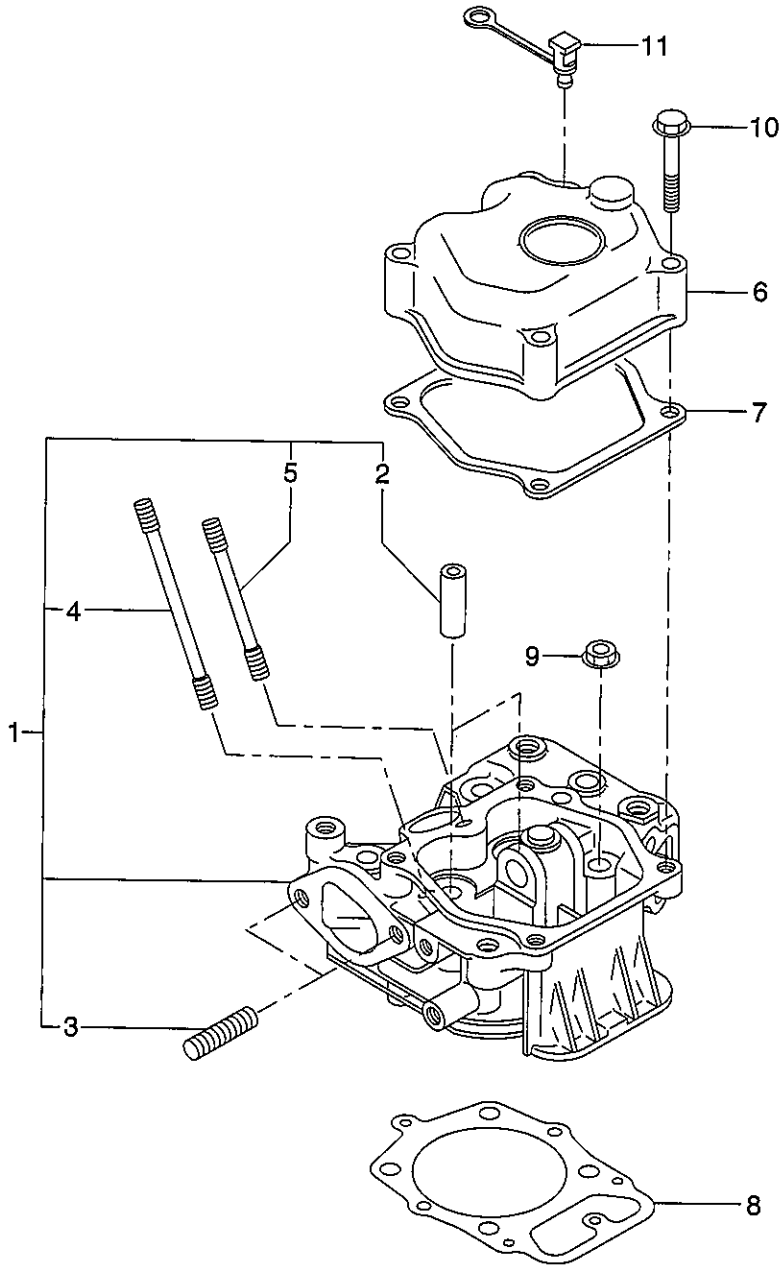


FIG.7 CAMSHAFT and VALVE ROCKER GROUP

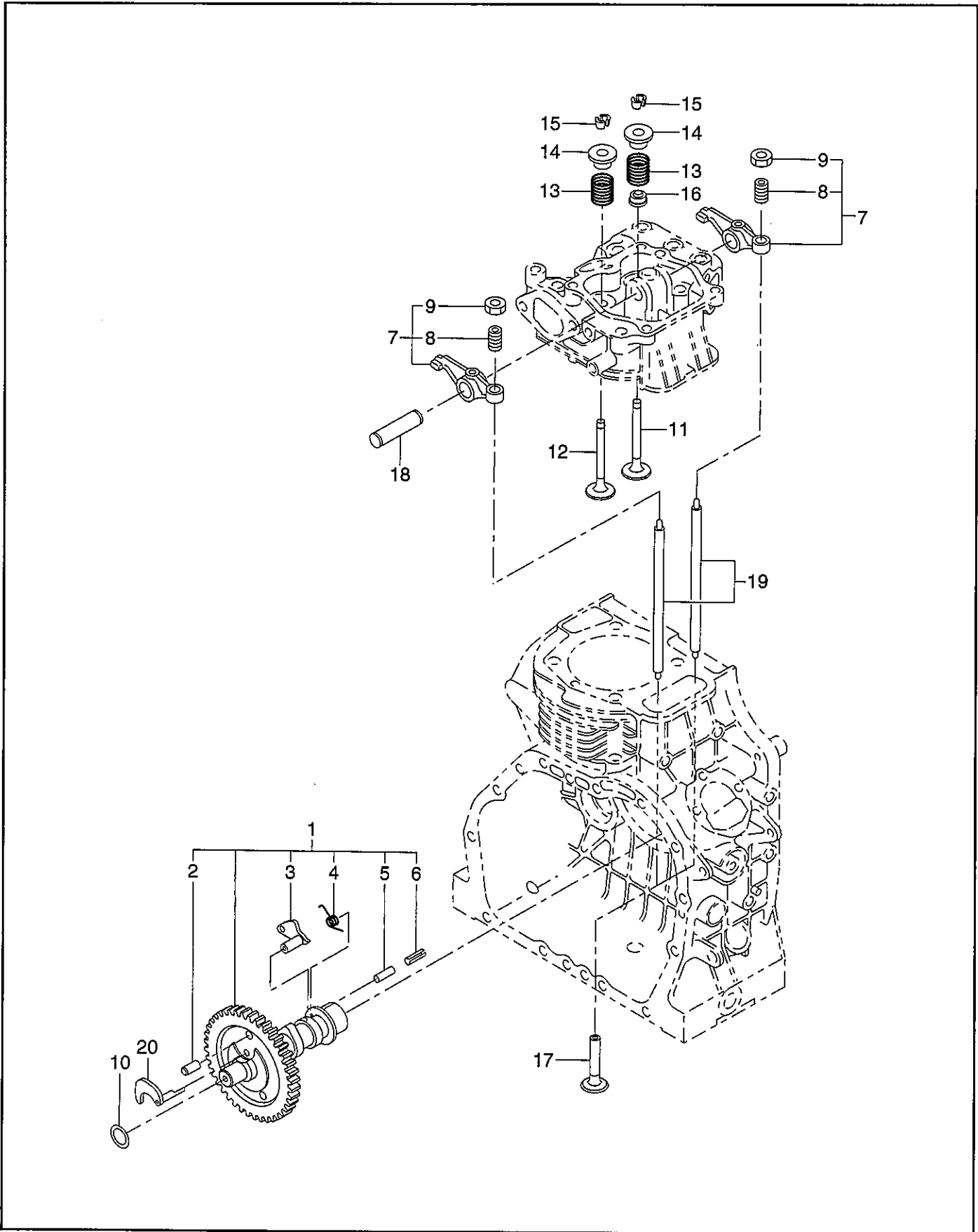


FIG.8 MUFFLER and AIR CLEANER GROUP

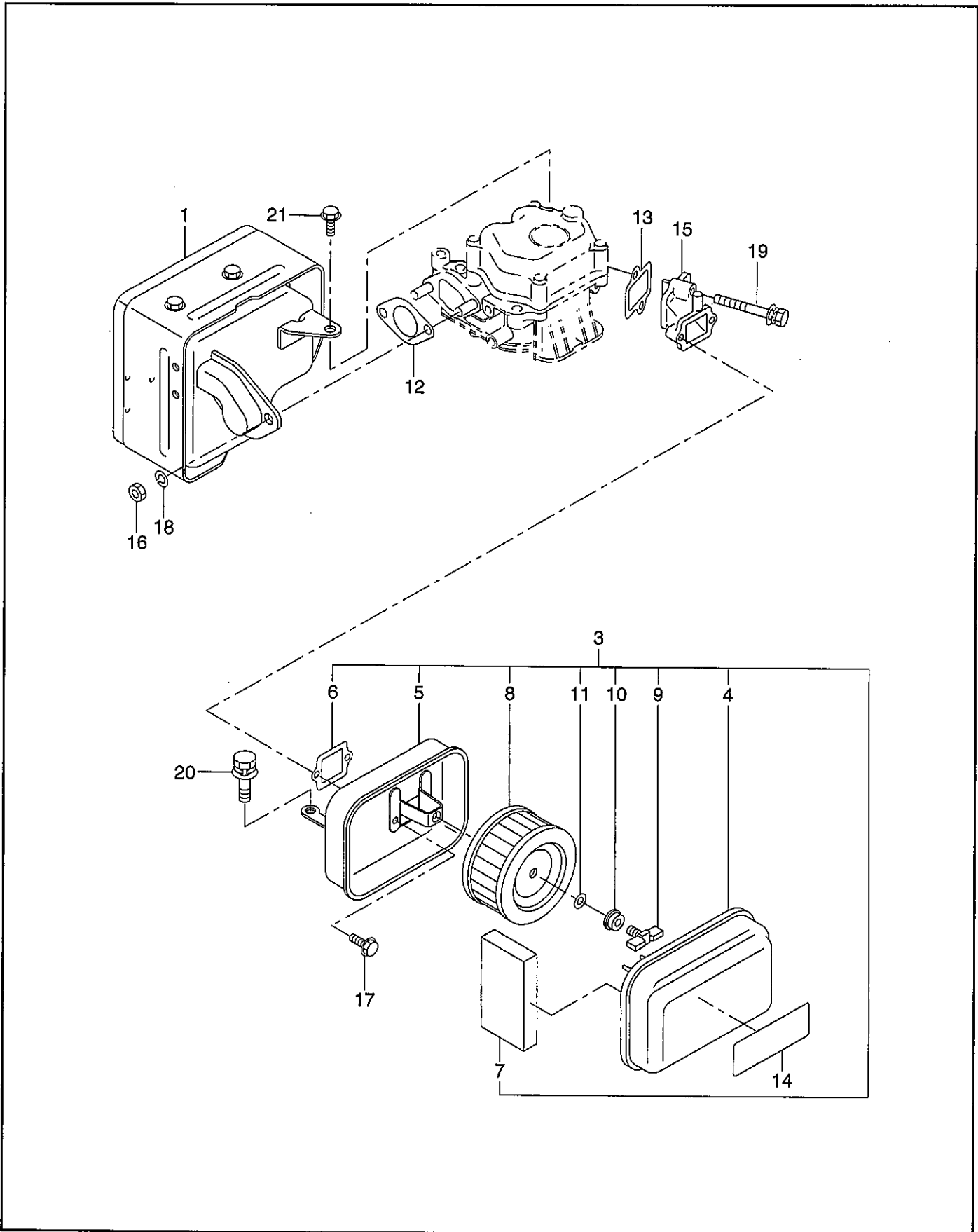


FIG.9 GOVERNOR OPERATION GROUP

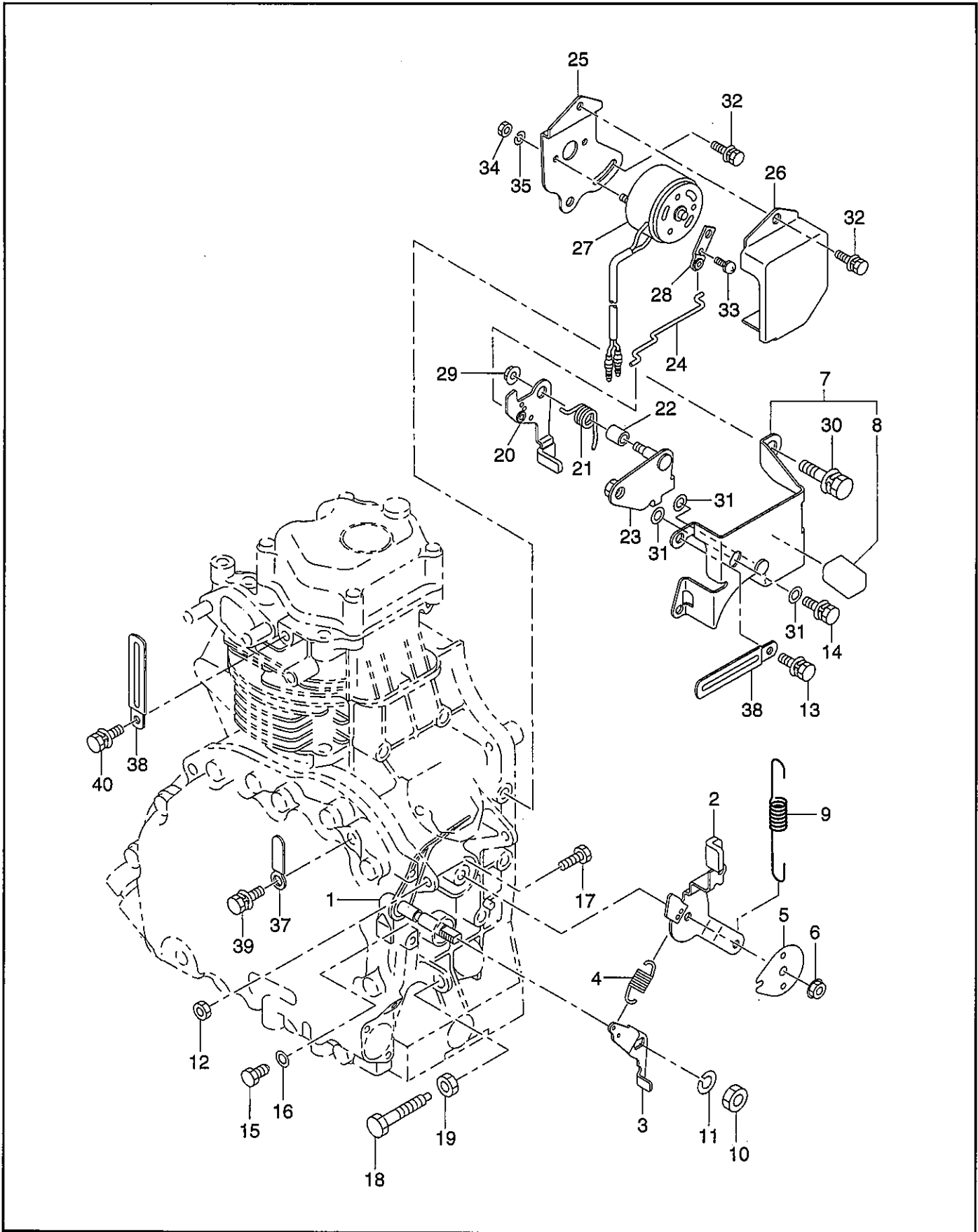


FIG.10 BLOWER HOUSING and RECOIL STARTER GROUP

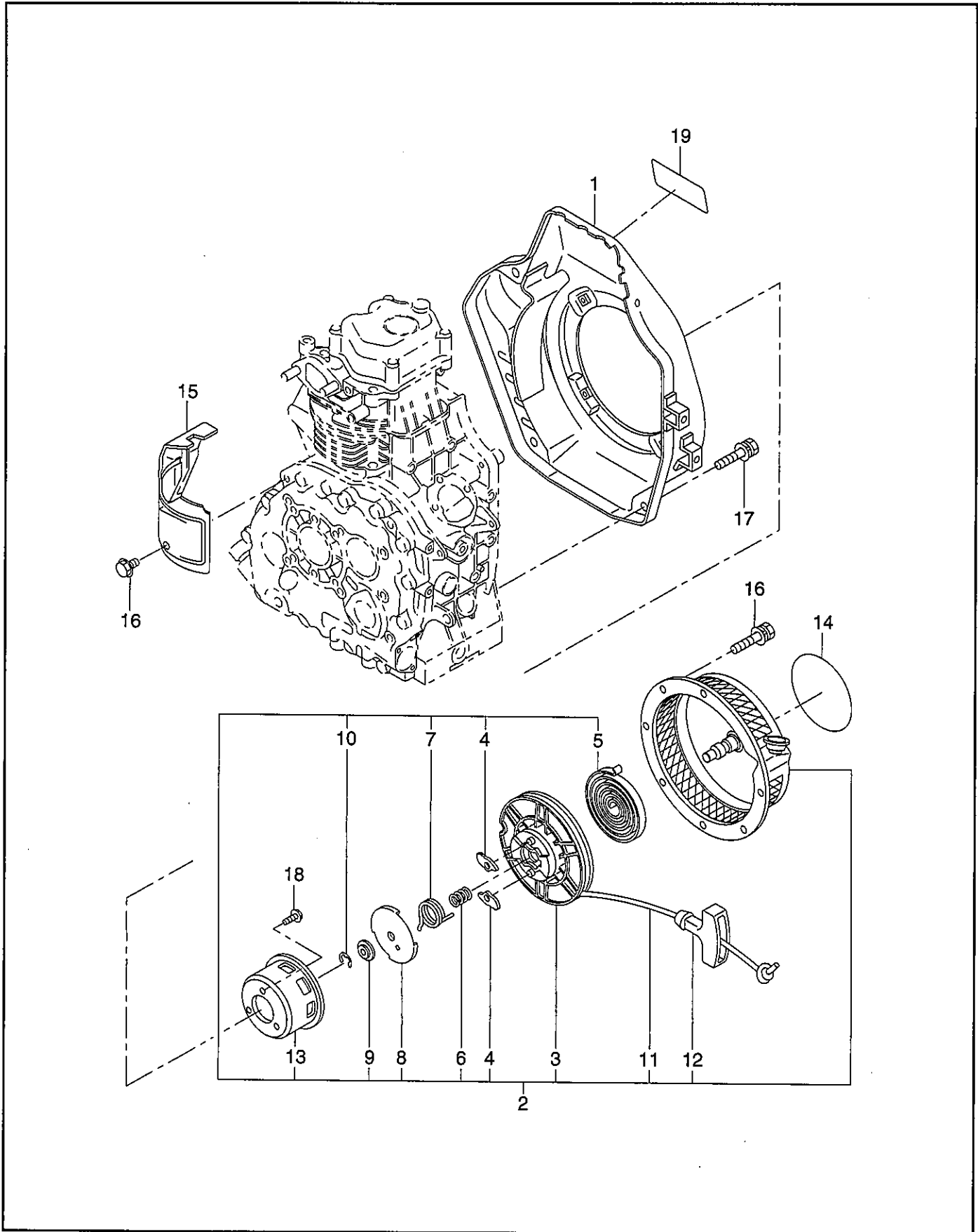


FIG.11 FUEL SYSTEM GROUP

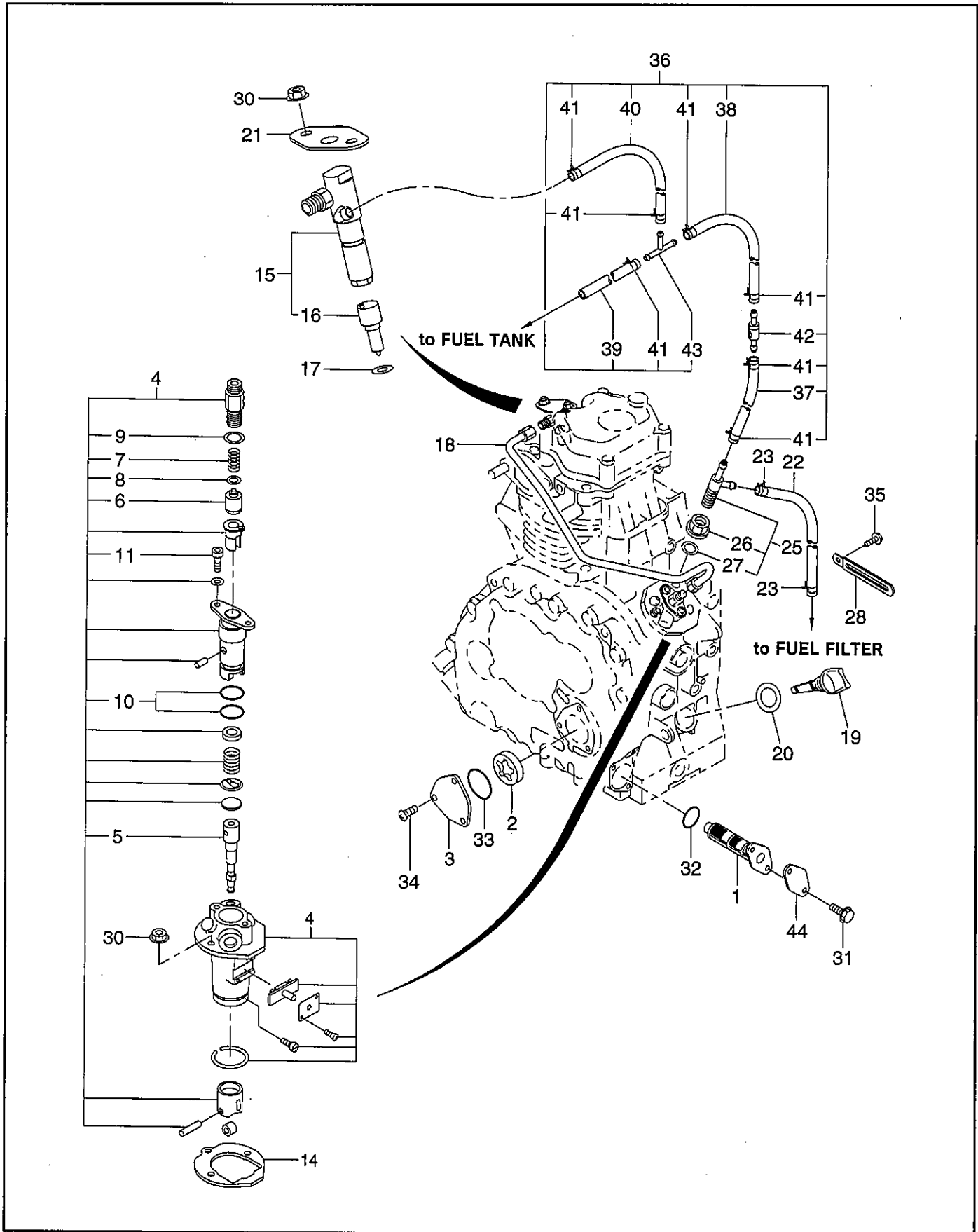


FIG.11 FUEL SYSTEM GROUP

Interchangeability

| Ref. No. | Part Number | Description | Q'ty | Execution |
|----------|--------------|--|------|-------------------------|
| 1 | 243-64301-00 | OIL FILTER ASS'Y | 1 | |
| 2 | 228-63902-03 | OIL PUMP, outer | 1 | |
| 3 | 243-66020-01 | COVER, oil pump | 1 | |
| *4 | 255-63103-00 | INJECTION PUMP ASS'Y Includes items 5 thru 11 | 1 | |
| 5 | 243-63131-08 | PLUNGER ASS'Y | 1 | |
| 6 | 243-63103-08 | DELIVERY VALVE | 1 | |
| 7 | 243-63104-08 | SPRING D.V. | 1 | |
| 8 | 243-63105-08 | GASKET | 1 | |
| 9 | 243-63107-08 | "O" RING | 1 | |
| 10 | 243-63129-08 | "O" RING | 2 | |
| 11 | 243-63130-08 | SCREW | 2 | |
| 14 | 243-65001-03 | GASKET, injection pump (t=0.1) | 1 | |
| 14 | 243-65002-03 | GASKET, injection pump (t=0.2) | 1 | - select one piece only |
| 14 | 243-65003-03 | GASKET, injection pump (t=0.3) | 1 | |
| *15 | 243-63202-00 | NOZZLE ASS'Y Includes item 16 | 1 | |
| 16 | 243-63204-08 | NOZZLE | 1 | |
| 17 | 228-65004-03 | GASKET, nozzle | 1 | |
| 18 | 243-63301-21 | INJECTION PIPE, compl. | 1 | |
| 19 | 214-63601-13 | OIL GAUGE | 2 | |
| 20 | 021-32000-10 | GASKET | 2 | |
| 21 | 243-66001-01 | BRACKET, nozzle 1 | 1 | |
| 22 | 085-10600-00 | RUBBER PIPE ($\phi 6 \times \phi 12 \times 250\text{mm}$) | 1 | |
| 23 | 056-11100-20 | HOSE CLAMP | 2 | |
| *25 | 243-66520-10 | T-CONNECTOR ASS'Y Includes items 26, 27 | 1 | |
| 26 | 243-66521-08 | NUT | 1 | |
| 27 | 243-66506-08 | PACKING | 1 | |
| 28 | 150-75201-03 | CLAMP | 1 | |
| 30 | 002-38060-00 | FLANGE NUT | 4 | |
| 31 | 001-14062-00 | BOLT and WASHER ASS'Y | 2 | |
| 32 | 006-26202-03 | "O" RING | 1 | |
| 33 | 006-26103-30 | "O" RING | 1 | |
| 34 | 004-11061-60 | SCREW | 3 | |
| 35 | 001-10061-00 | BOLT and WASHER ASS'Y | 1 | |
| *36 | 255-62606-11 | FUEL PIPE 6, compl. Includes items 37 thru 43 | 1 | |
| 37 | 085-14500-00 | RUBBER PIPE ($\phi 4.5 \times \phi 9 \times 95\text{mm}$) | 1 | |
| 38 | 085-14500-00 | RUBBER PIPE ($\phi 4.5 \times \phi 9 \times 180\text{mm}$) | 1 | |
| 39 | 085-14500-00 | RUBBER PIPE ($\phi 4.5 \times \phi 9 \times 60\text{mm}$) | 1 | |
| 40 | 085-14500-00 | RUBBER PIPE ($\phi 4.5 \times \phi 9 \times 170\text{mm}$) | 1 | |
| 41 | 056-10800-10 | HOSE CLAMP | 7 | |
| 42 | 228-65032-13 | CHECK VALVE | 1 | |
| 43 | 255-65003-03 | T-CONNECTOR, compl. | 1 | |
| 44 | 255-65005-01 | FILTER PLATE, compl. | 1 | |

FIG.12 ELECTRICAL EQUIPMENT GROUP

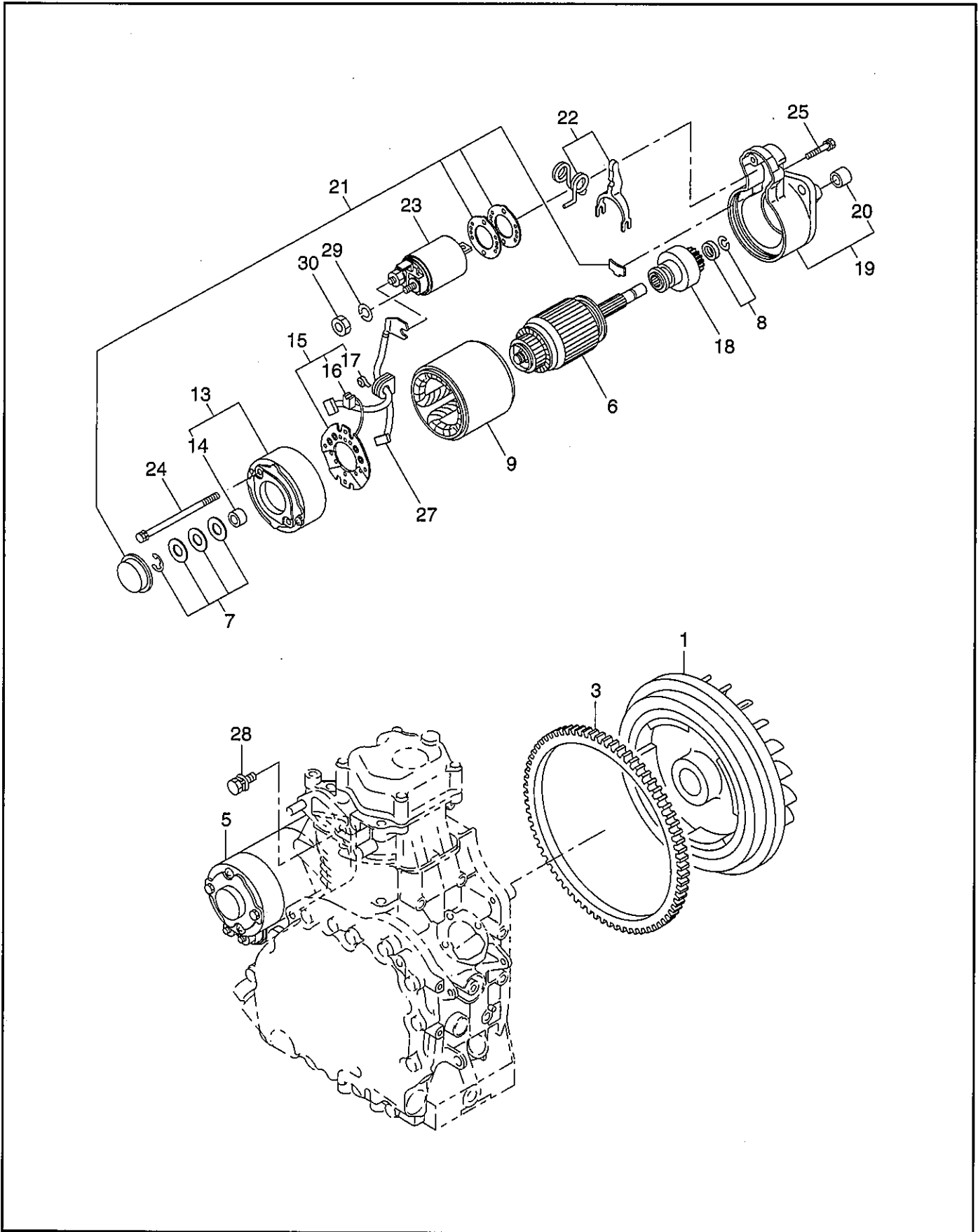


FIG.13 ACCESSORIES GROUP

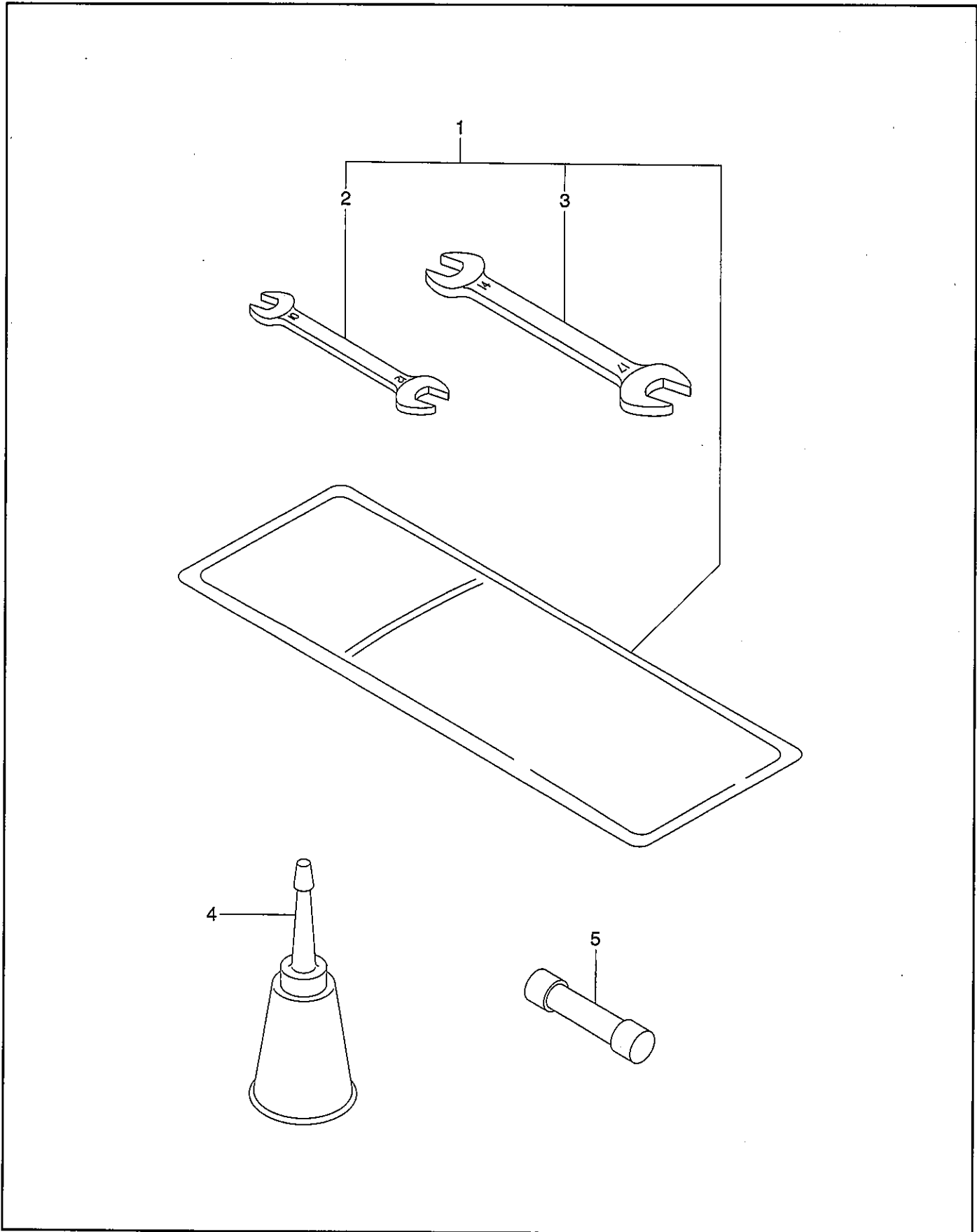


FIG.14 4-WHEEL KIT GROUP

