



# PARTS CATALOG

# Robin

## Generator

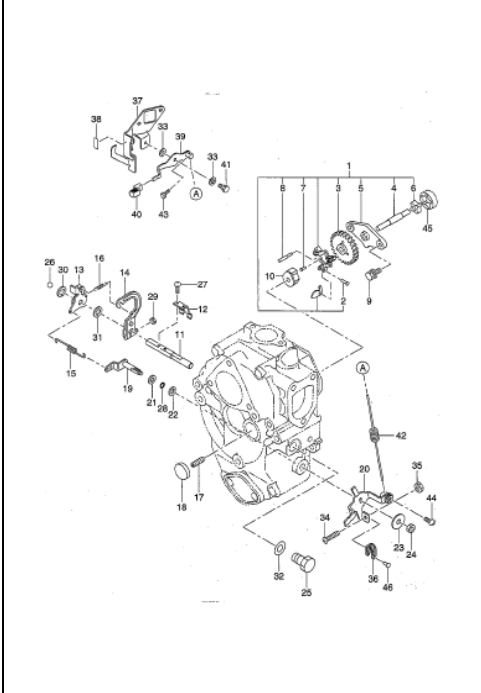
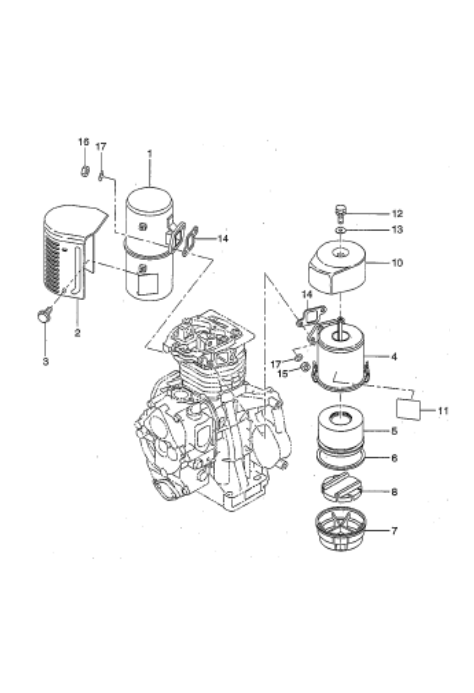
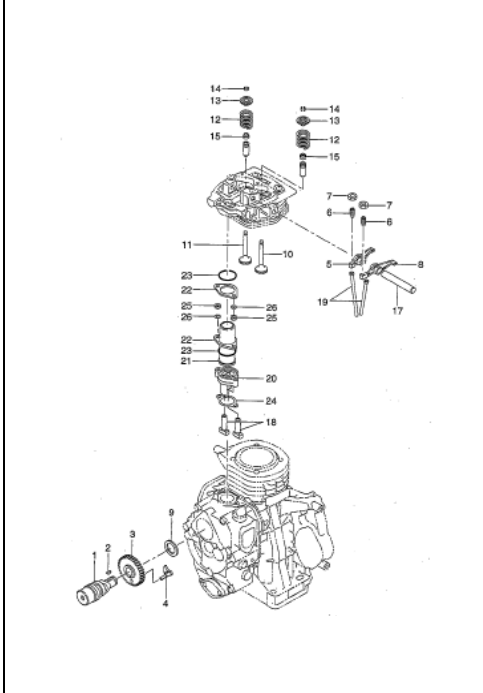
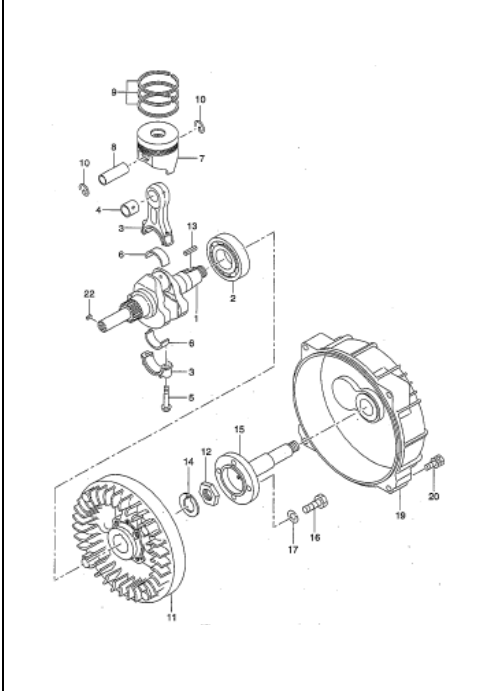
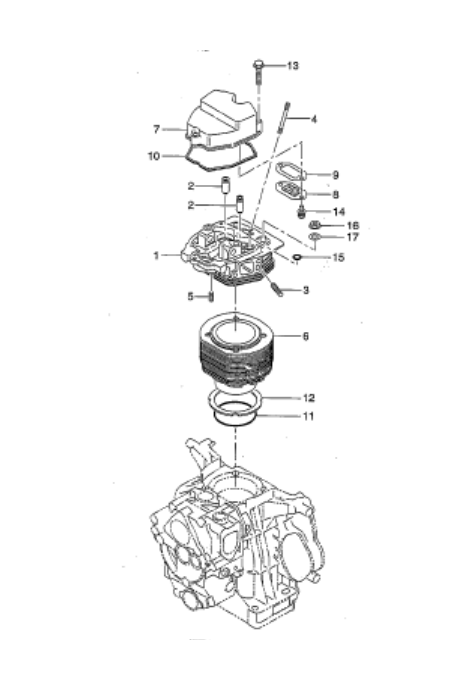
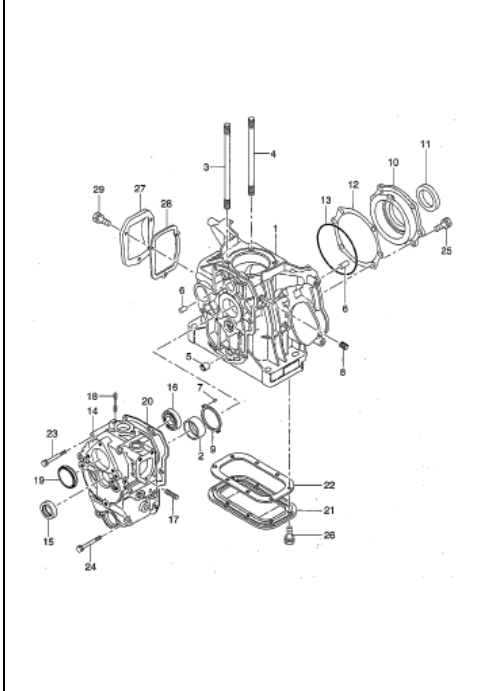
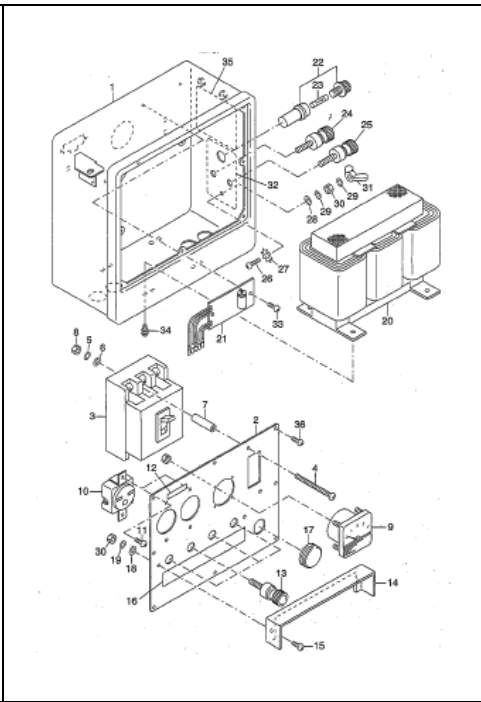
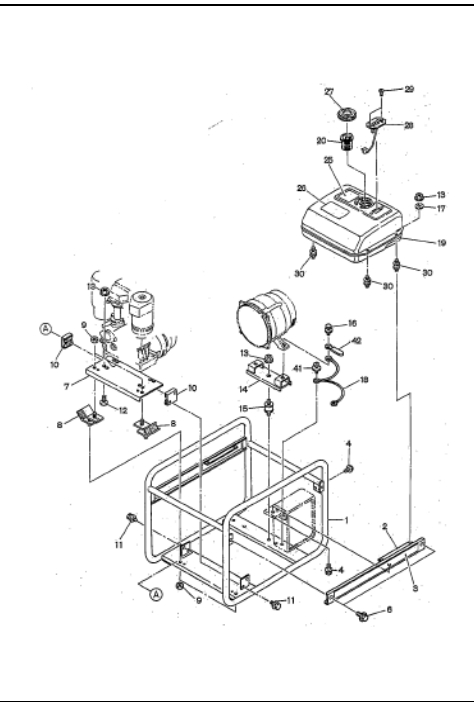
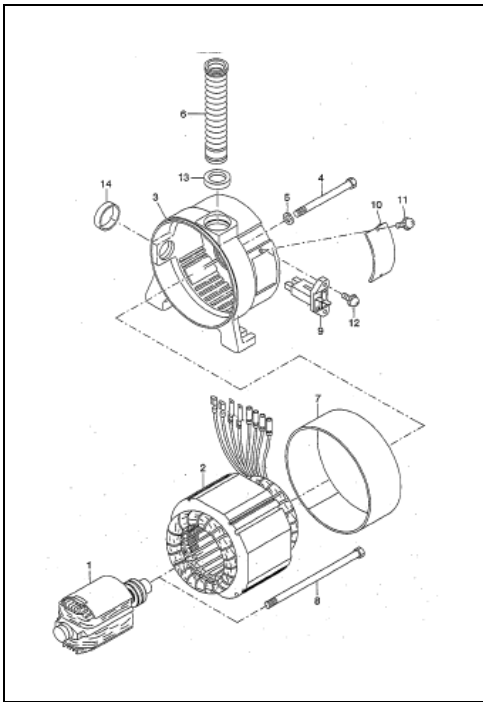
Model

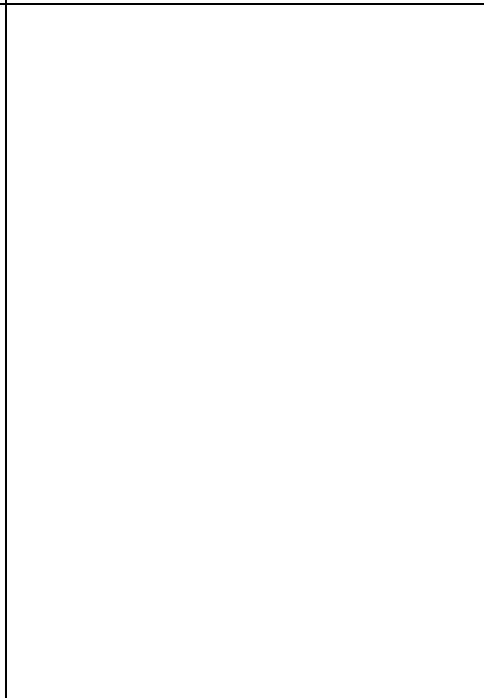
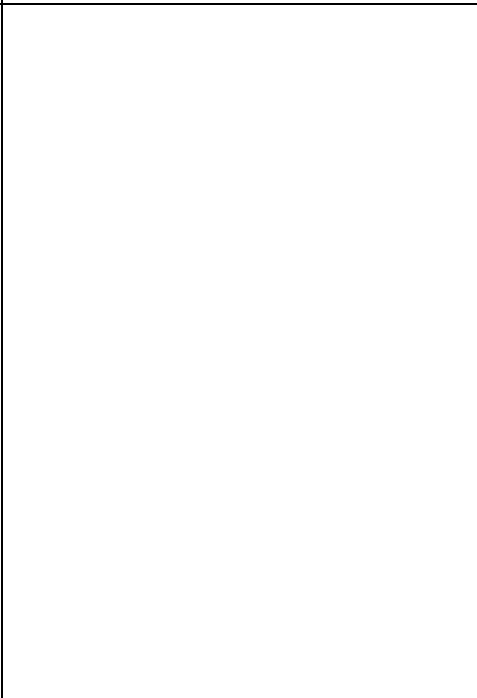
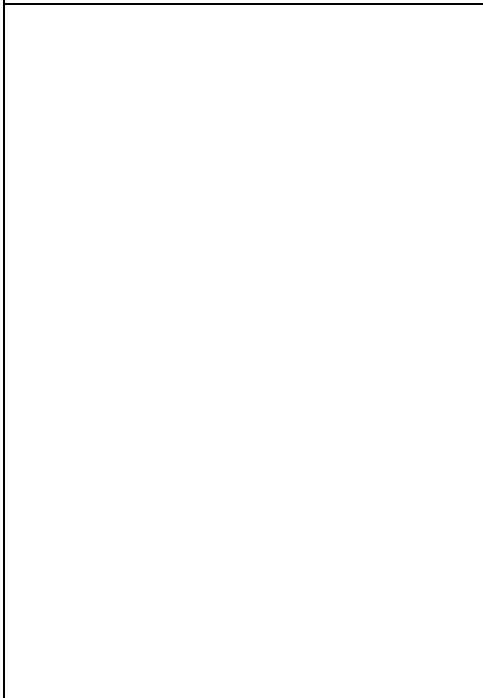
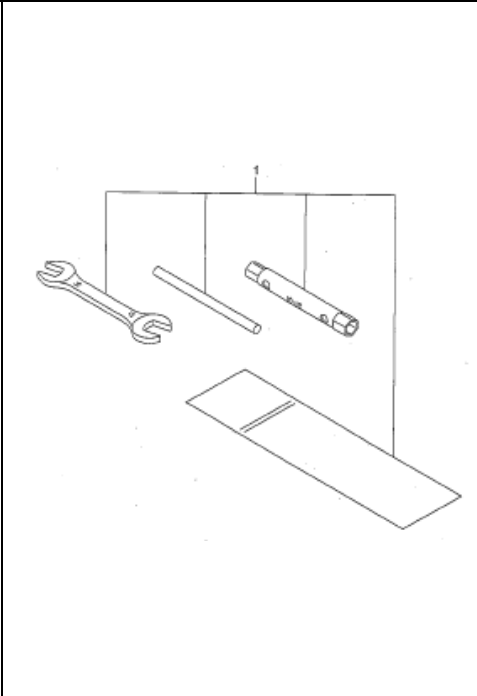
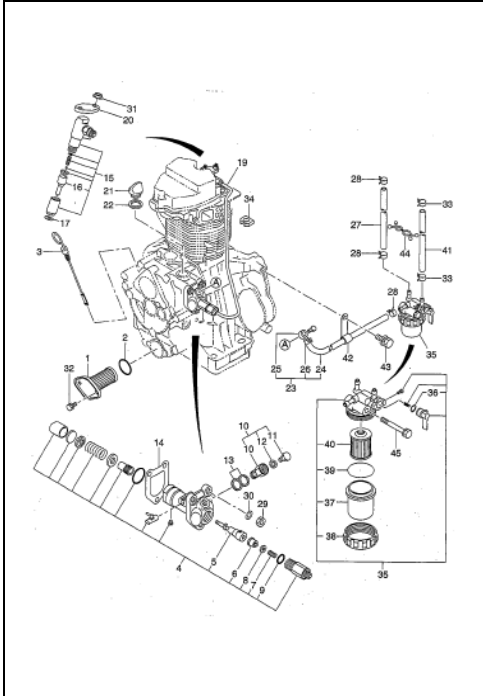
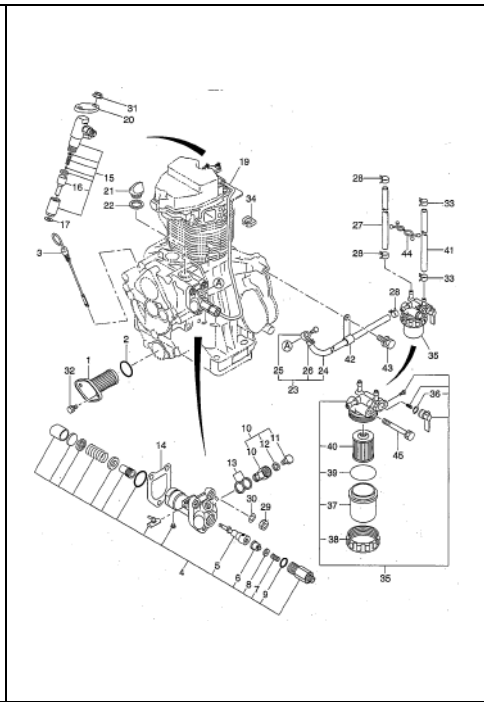
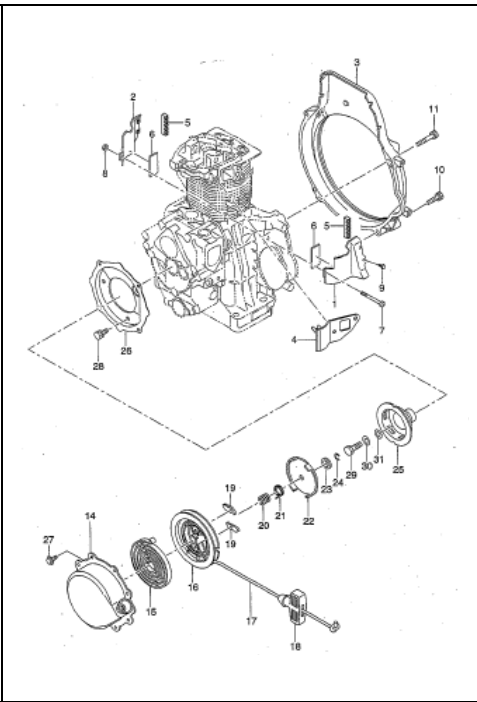
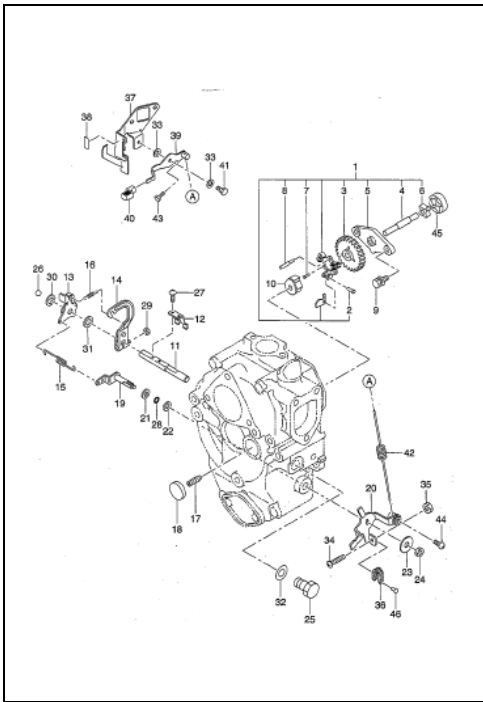
# ***RGD5000***

**THREE PHASE type**

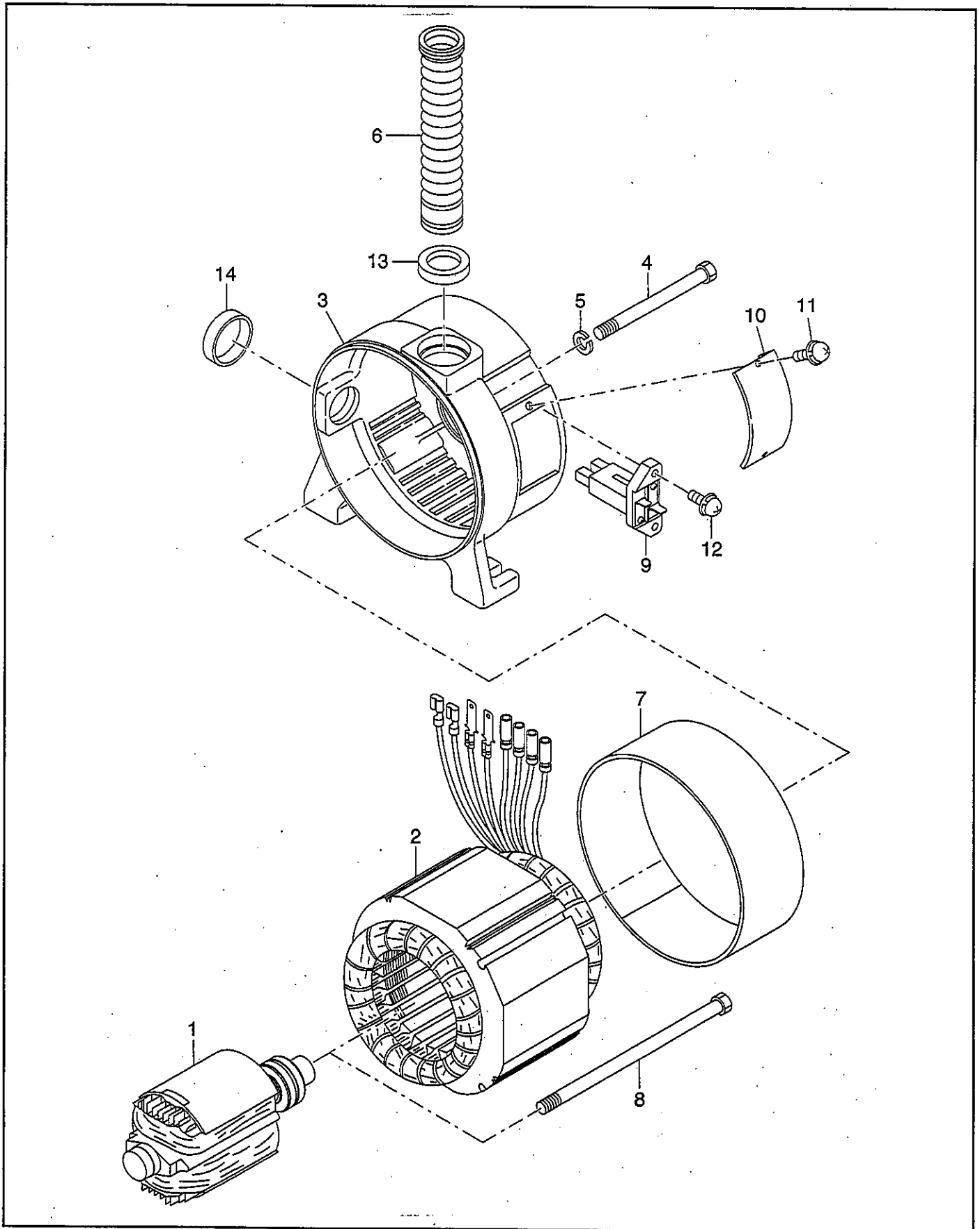
 **FUJI HEAVY INDUSTRIES LTD.**

ISSUE EMD-GP1444



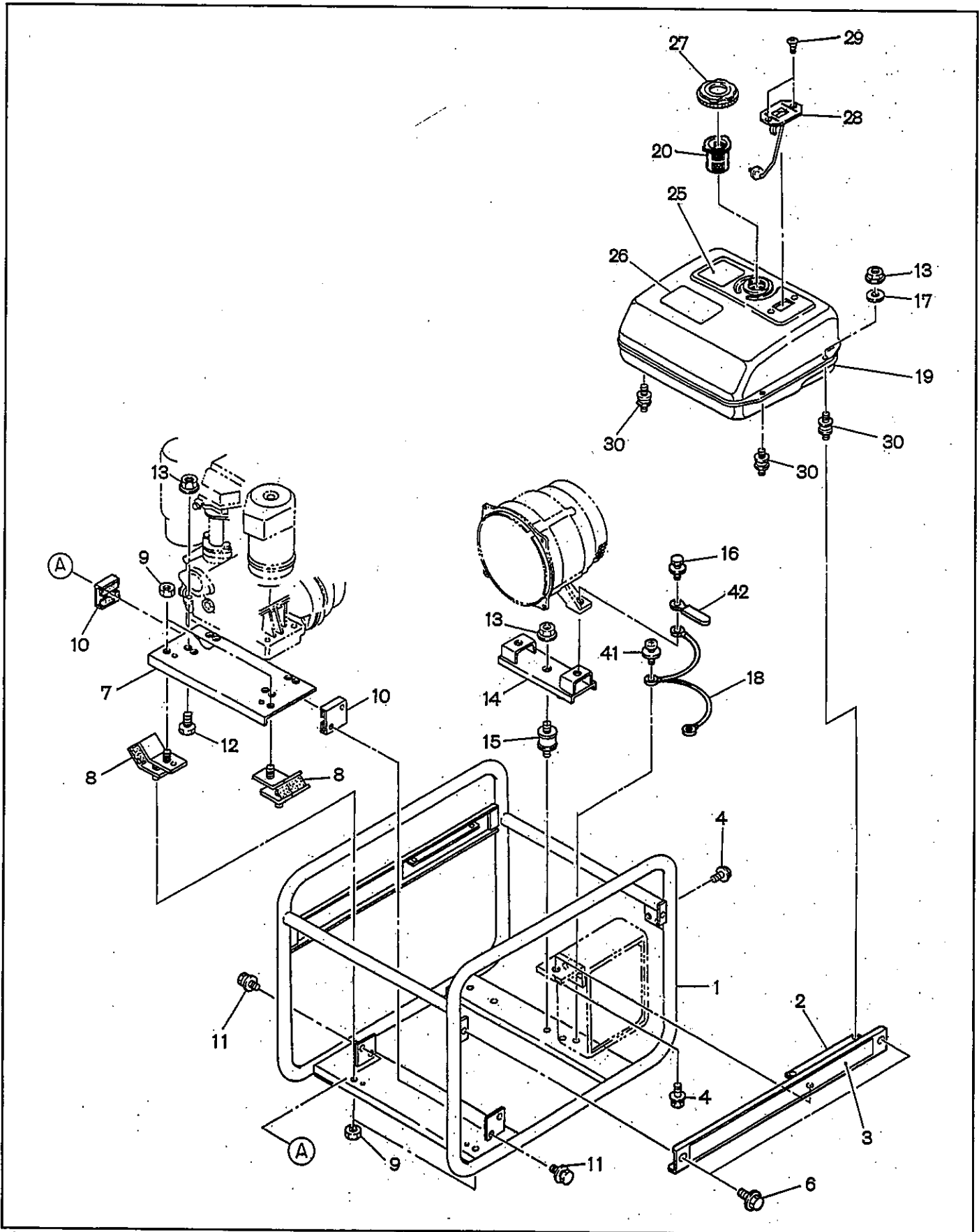


**FIG.1 GENERATOR GROUP**



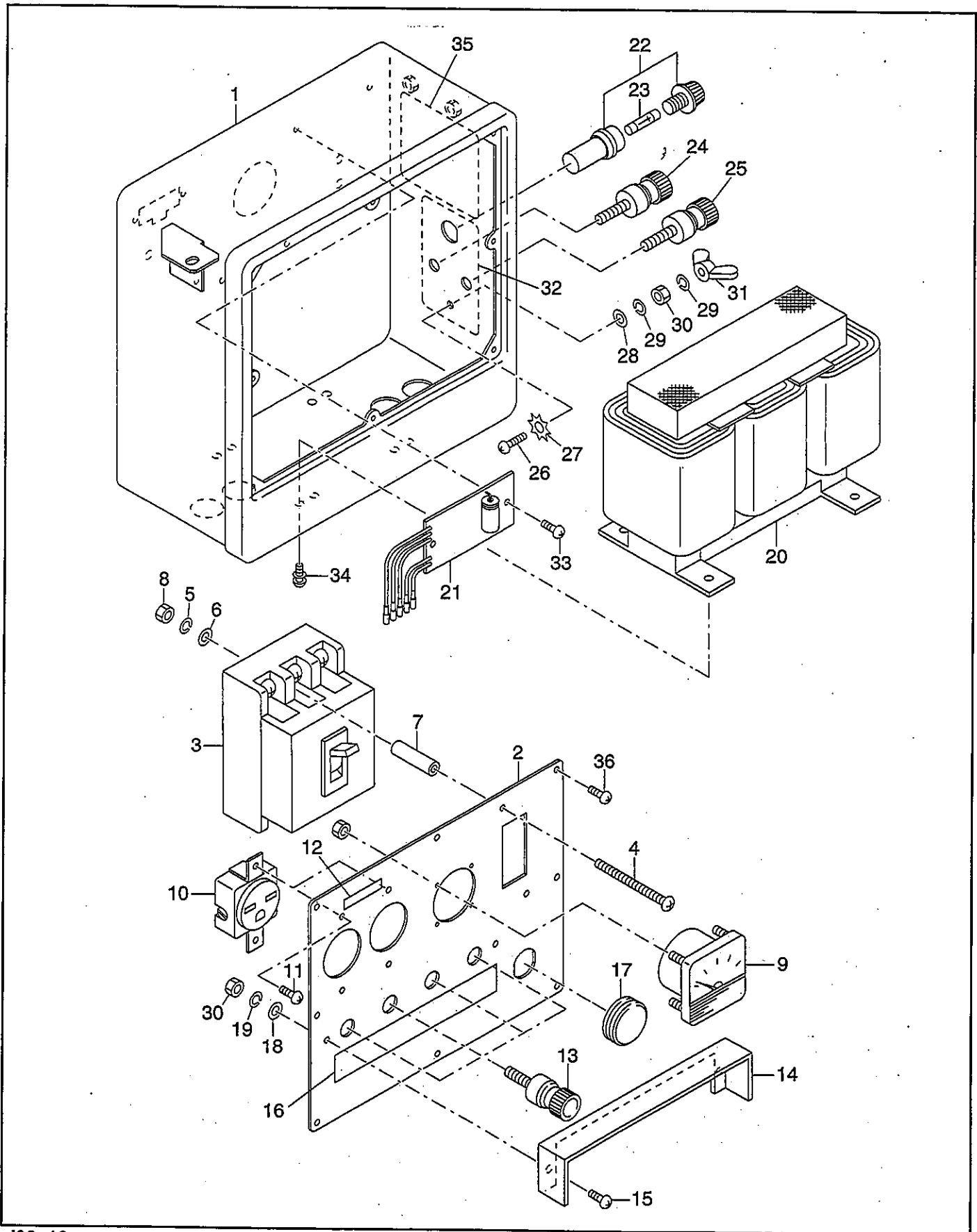


**FIG.2 PIPE FRAME and FUEL TANK GROUP**





**FIG.3 CONTROL BOX GROUP (50Hz-220V/380V)**



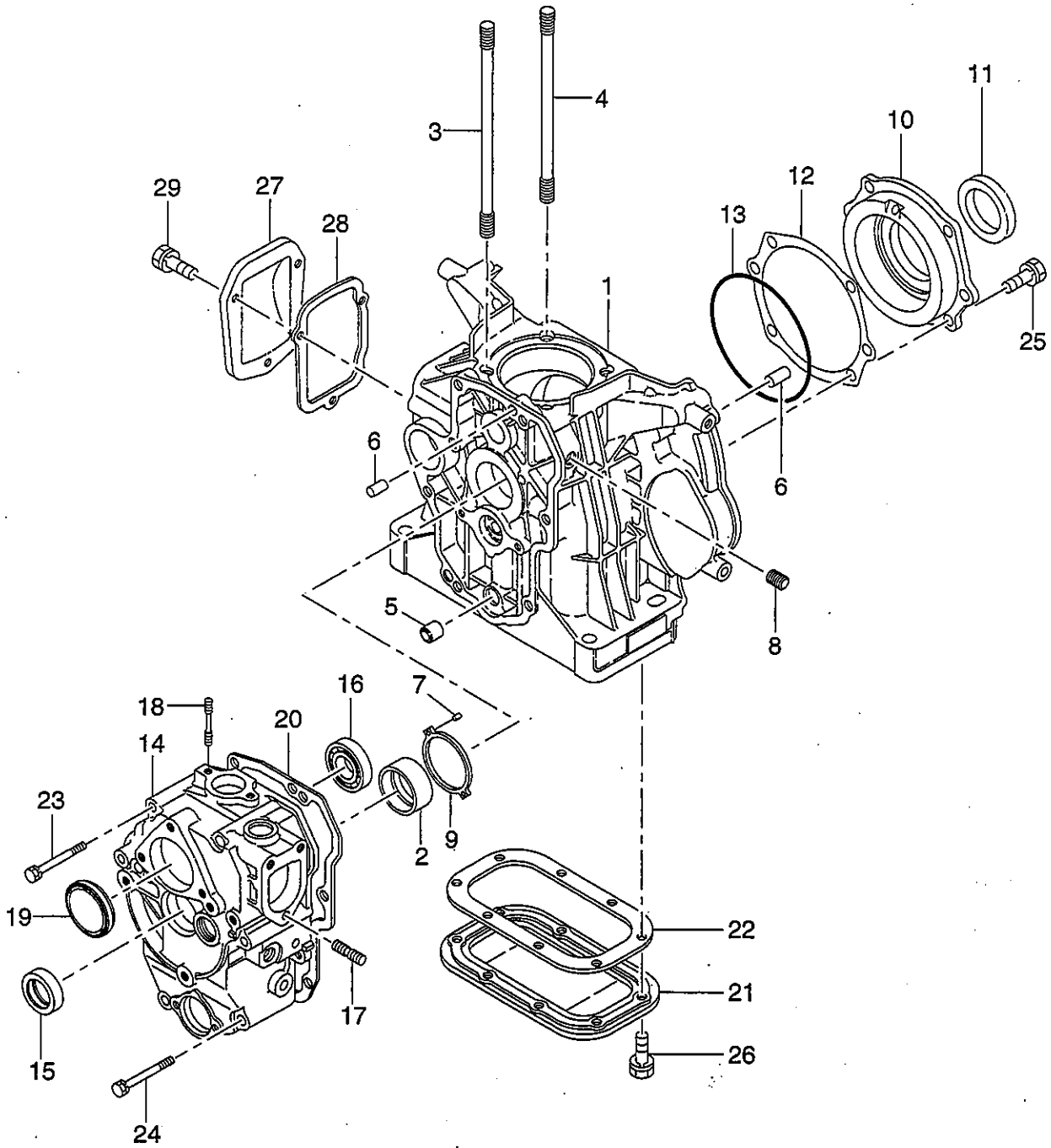


### FIG.3 CONTROL BOX GROUP (50Hz-220V/380V)

↙ Interchangeability

Ref. No.	Part Number	Description	Q'ty	Execution
*1	386-40999-08	CONTROL BOX ASS'Y Includes items 1 thru 36	1	
1	386-43125-08	CONTROL BOX	1	
*2	386-41123-08	CONTROL PANEL A ASS'Y Includes items 2 thru 19	1	
2	386-43850-08	CONTROL PANEL A	1	
3	374-45631-08	NO-FUSE BREAKER (7.4A)	1	
4	374-49914-08	SCREW and WASHER ASS'Y (M4 × 60mm)	2	
5	003-20040-00	SPRING WASHER	2	
6	003-10040-00	WASHER	2	
7	374-47519-08	SPACER (φ 8 × φ 6 × 42mm)	2	
8	002-17040-00	NUT (M4)	2	
9	329-15600-08	V-METER (0~600V)	1	
10	329-17012-08	AC RECEPTACLE (250V-15A)	2	
11	326-00358-08	SCREW and WASHER ASS'Y (M3.5 × 10mm)	4	
12	356-49054-08	LABEL (AC220V)	1	
13	374-45723-08	TERMINAL	4	
14	374-45904-08	TERMINAL COVER	1	
15	004-35041-00	SCREW (M4 × 10mm)	2	
16	329-13338-08	TERMINAL LABEL	1	
17	389-47552-08	GROMMET	1	
18	003-11040-00	WASHER	4	
19	003-20040-00	SPRING WASHER	4	
20	386-30510-08	CT TRANS	1	
21	386-45814-08	DIODE UNIT	1	
22	320-59855-08	FUSE HOLDER (DC) (250V-10A)	1	
23	320-59860-08	FUSE (10A)	3	spare: 2 pieces
24	363-45701-08	TERMINAL BOLT (COLOR : RED)	1	
25	363-45700-08	TERMINAL BOLT (COLOR : BLACK)	1	
26	356-49907-08	SCREW (M5 × 15mm)	1	
27	372-59950-08	SPRING WASHER	1	
28	353-49903-08	WASHER	1	
29	332-00050-08	SPRING WASHER	2	
30	353-49902-08	NUT (M5)	1	
31	353-49901-08	WING NUT (M5)	1	
32	353-49036-08	LABEL (DC)	1	
33	004-35041-00	SCREW (M4 × 10mm)	2	
34	004-35051-00	SCREW (M5 × 10mm)	4	
35	386-59376-08	MODEL LABEL	1	
36	353-49904-08	SCREW	8	

FIG.4 CRANKCASE GROUP

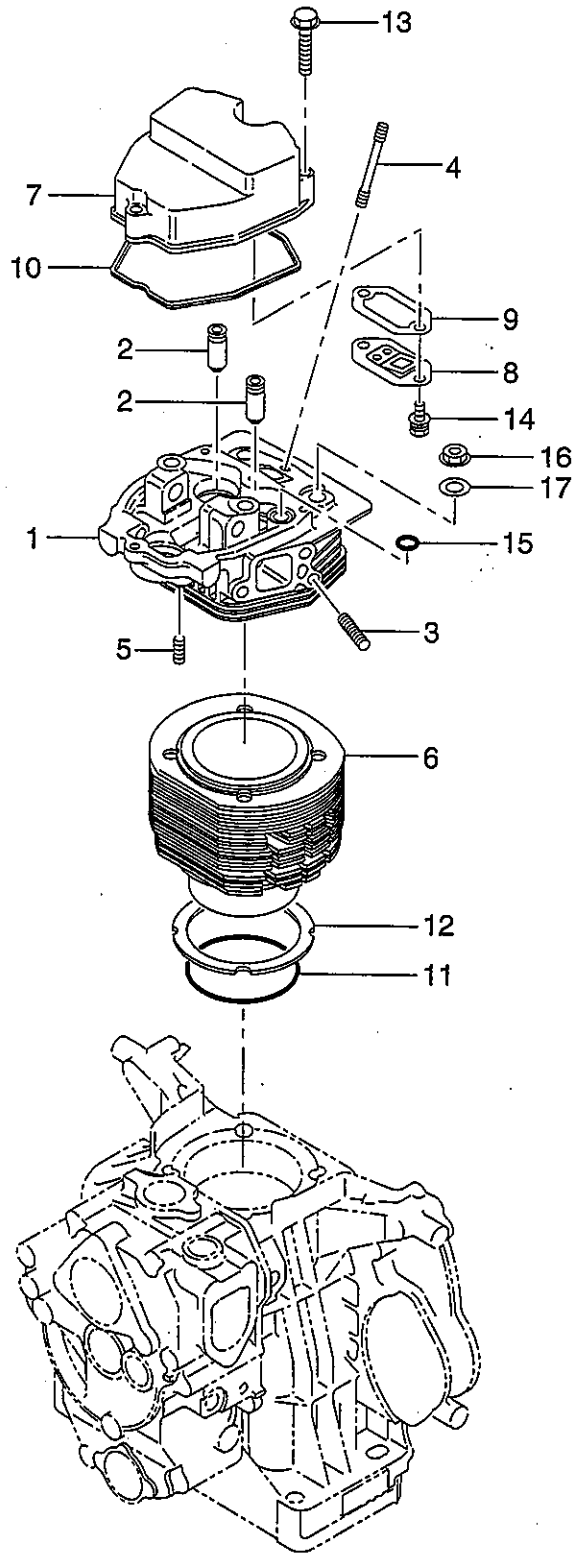


# FIG.4 CRANKCASE GROUP

↙Interchangeability

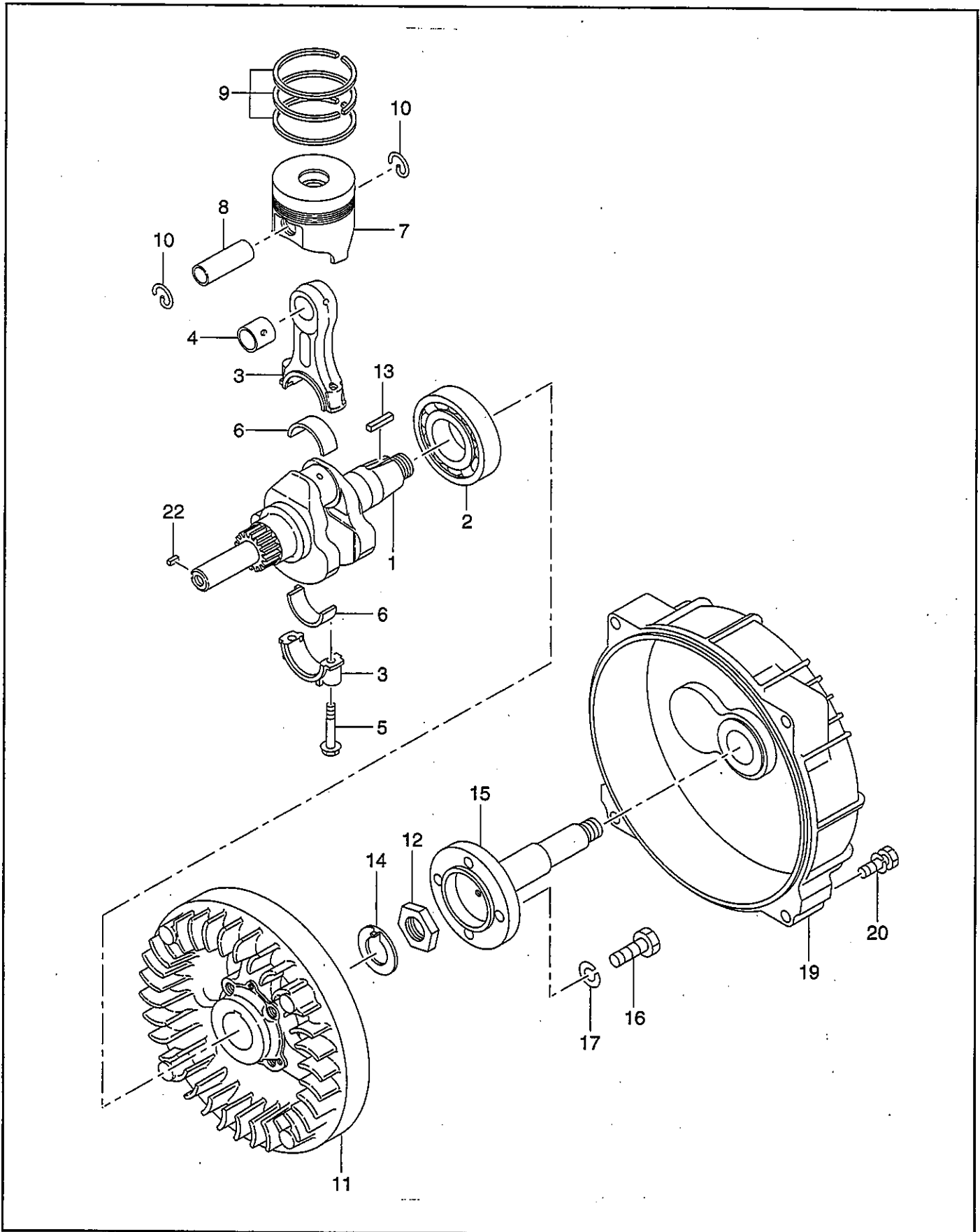
Ref. No.	Part Number	Description	Q'ty	Execution
*1	231-10107-11	CRANKCASE, compl. Includes items 2 thru 8	1	
2	228-15801-03	MAIN BEARING, STD	1	
2	228-15802-03	MAIN BEARING, under size 0.25mm	1	
2	228-15803-03	MAIN BEARING, under size 0.50mm	1	
3	231-16001-11	TENSION BOLT 1	2	
4	231-16002-11	TENSION BOLT 2	2	
5	228-15003-13	PIPE KNOCK	1	
6	005-26081-80	DOWEL PIN	4	
7	005-19250-60	SPRING PIN	2	
8	212-15008-13	BLIND PLUG	1	
9	228-15002-03	THRUST BEARING	1	
*10	231-11501-21	BEARING HOUSING Includes item 11	1	
11	044-04000-20	OIL SEAL (40 × 58 × 8)	1	
12	231-15004-03	GASKET, t=0.1	1	
12	231-15005-03	GASKET, t=0.2	1	
12	231-15006-03	GASKET, t=0.3	1	
13	231-15014-03	"O" RING, bearing housing	1	
*14	231-11701-01	GEAR CASE COVER, compl. Includes items 14 thru 19	1	
15	044-02200-50	OIL SEAL (22 × 35 × 7)	1	
16	060-03500-40	BALL BEARING (BB-6007C3)	1	
17	001-32083-51	STUD	3	
18	001-32064-50	STUD	2	
19	041-05000-11	BLIND PLATE	1	
20	231-15007-03	GASKET, case cover (t=0.5)	1	
21	231-11601-03	OIL PAN	1	
22	231-15034-03	GASKET, oil pan (t=1.5)	1	
23	001-13088-50	BOLT and WASHER ASS'Y	4	
24	001-13086-50	BOLT and WASHER ASS'Y	4	
25	001-13082-00	BOLT and WASHER ASS'Y	7	
26	980-05060-10	BOLT and WASHER ASS'Y (M6 × 13mm)	8	
27	228-26001-01	BALANCER COVER	1	
28	228-25004-03	GASKET, balancer cover	1	
29	980-05060-10	BOLT and WASHER ASS'Y (M6 × 13mm)	3	

**FIG.5 CYLINDER and CYLINDER HEAD GROUP**





**FIG.6 CRANKSHAFT and PISTON GROUP**

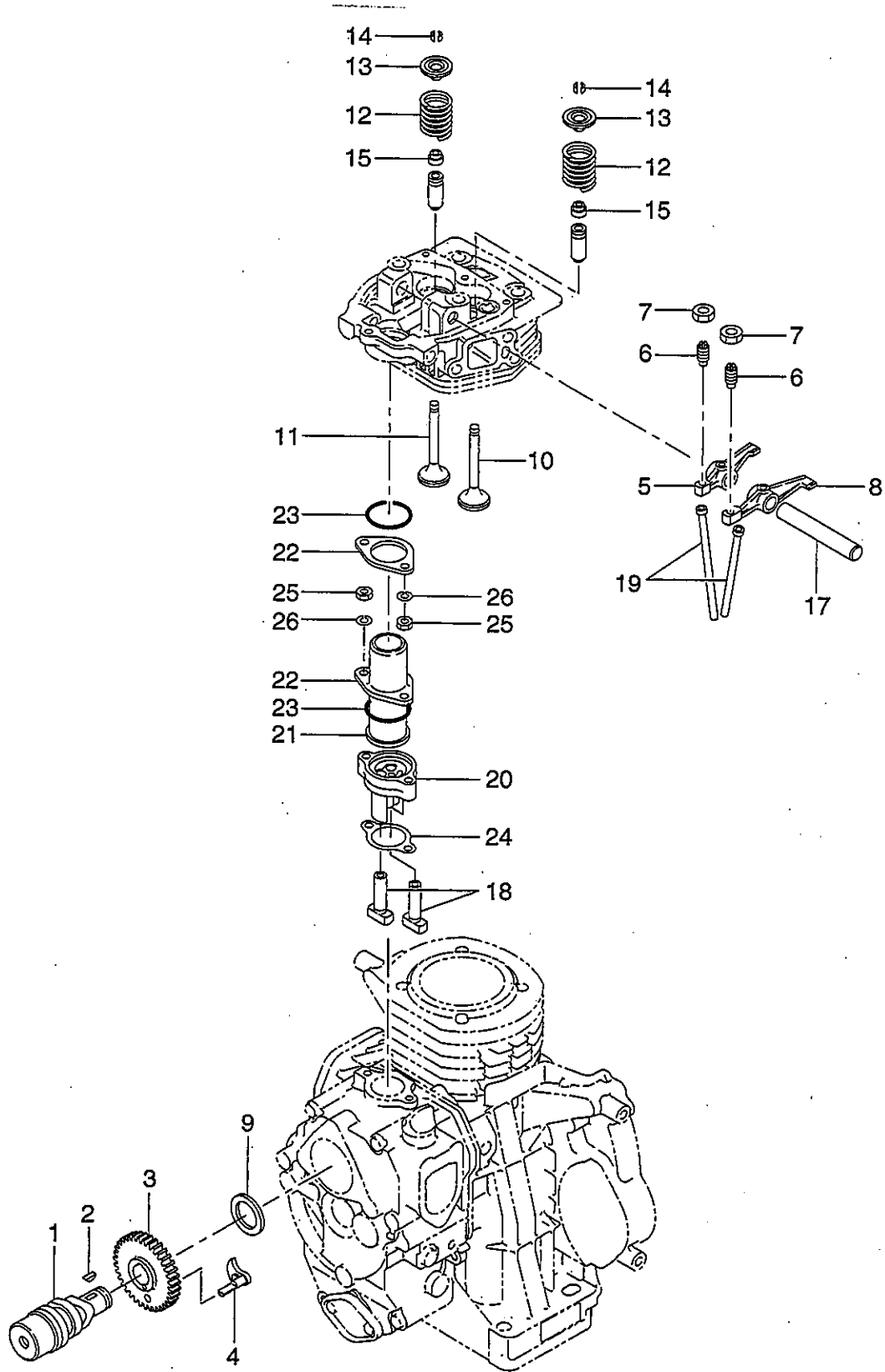


# FIG.6 CRANKSHAFT and PISTON GROUP

↙Interchangeability

Ref. No.	Part Number	Description	Q'ty	Execution
*1	262-20201-01	CRANKSHAFT, compl. Includes item 2	1	
2	060-04000-30	BALL BEARING (BB-6308C3)	1	
*3	231-22501-10	CONNECTING ROD ASS'Y Includes items 4 and 5	1	
4	228-22901-13	SMALL END BUSH	1	
5	231-23001-13	CONNECTING ROD BOLT	2	
6	228-22801-13	LARGE END BEARING, STD.	2	
6	228-22802-13	LARGE END BEARING, under size 0.25mm	2	
6	228-22803-13	LARGE END BEARING, under size 0.50mm	2	
7	231-23401-43	PISTON, STD.	1	
7	231-23402-43	PISTON, over size 0.25mm	1	
7	231-23403-43	PISTON, over size 0.50mm	1	
8	228-23301-03	PISTON PIN	1	
9	229-23501-27	PISTON RING SET, STD.	1	
9	229-23502-27	PISTON RING SET, over size 0.25mm	1	
9	229-23503-27	PISTON RING SET, over size 0.50mm	1	
10	056-52100-10	CLIP	2	
11	228-22401-23	FLYWHEEL	1	
12	017-32600-10	LOCK NUT	1	
13	005-30072-01	KEY	1	
14	020-52600-12	LOCK WASHER	1	
15	228-24402-13	DRIVING SHAFT	1	
16	001-67103-00	BOLT	4	
17	003-20100-00	SPRING WASHER	4	
19	228-17601-03	ADAPTER, generator	1	
20	001-13082-50	BOLT and WASHER ASS'Y	4	
22	005-30040-81	KEY	1	

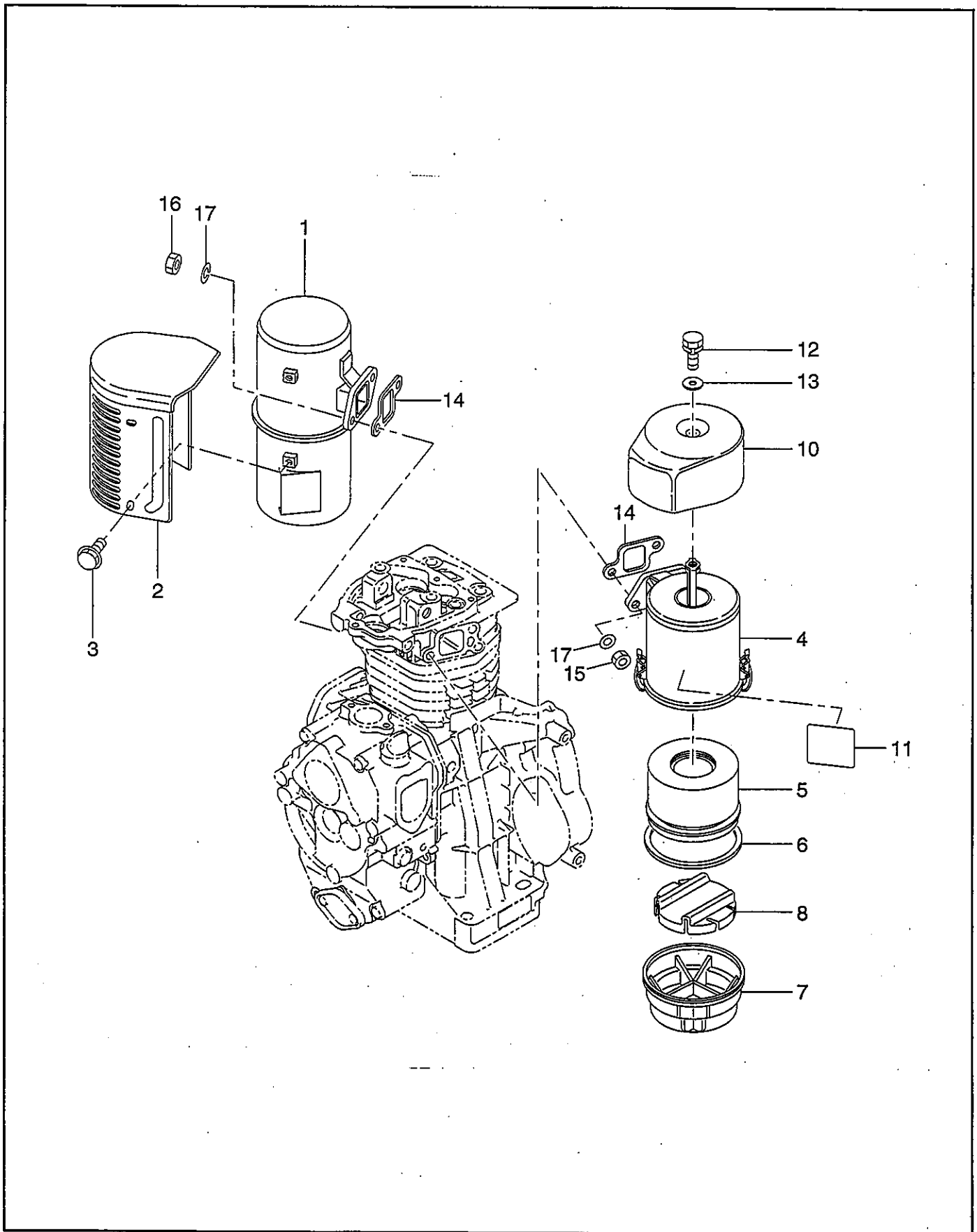
**FIG.7 CAMSHAFT GROUP**





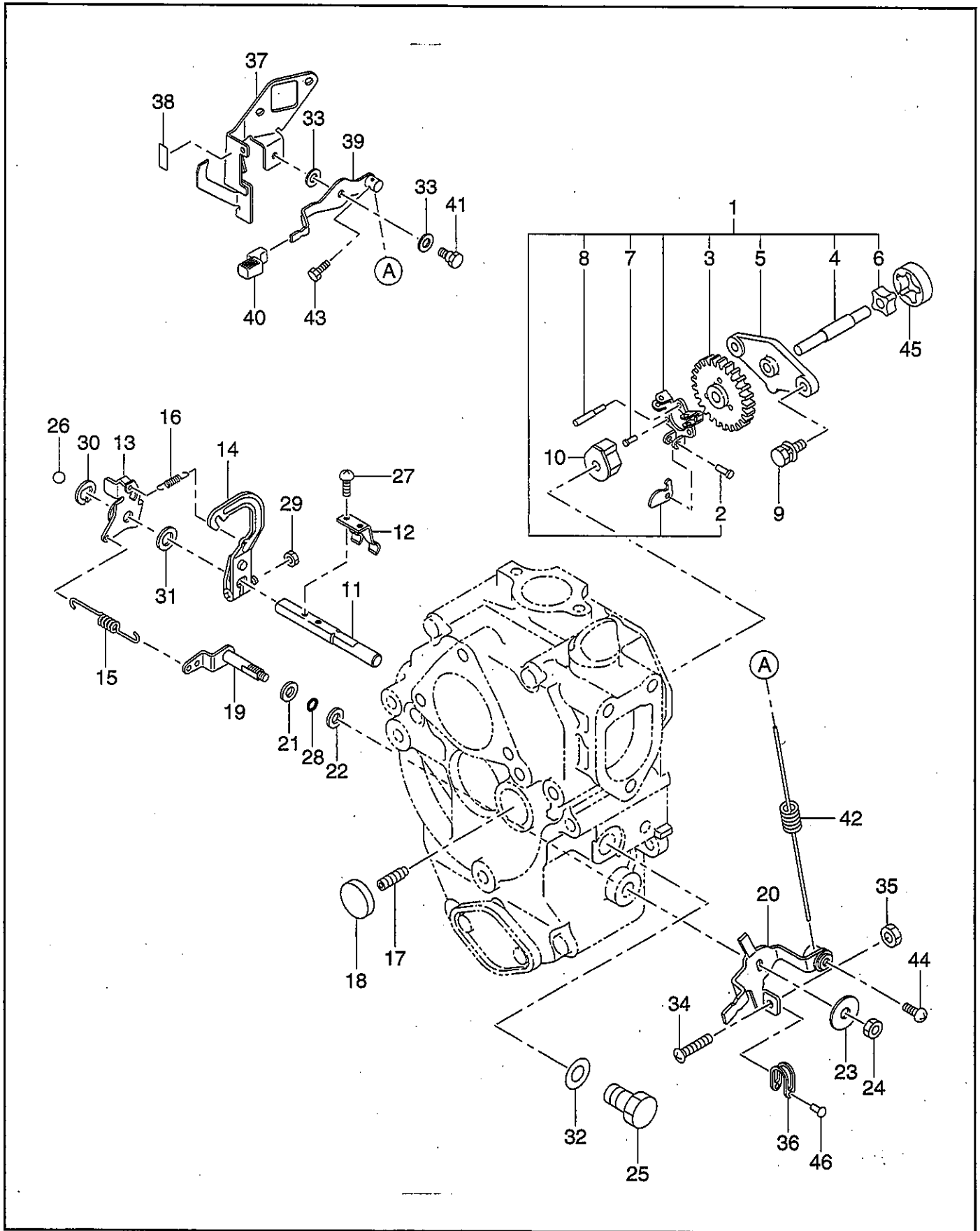


**FIG.8 MUFFLER and AIR CLEANER GROUP**





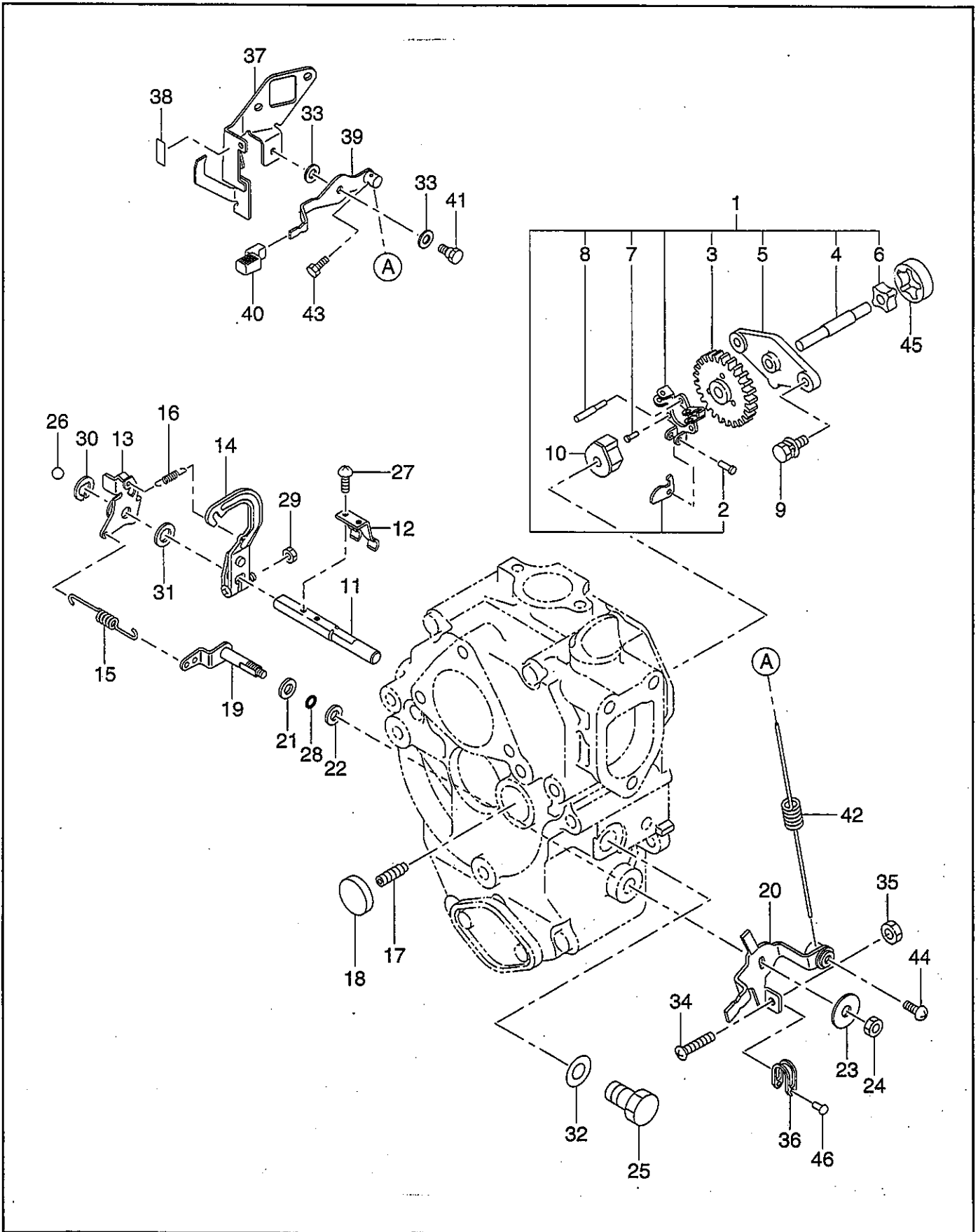
**FIG.9 GOVERNOR GROUP**



# FIG.9 GOVERNOR GROUP

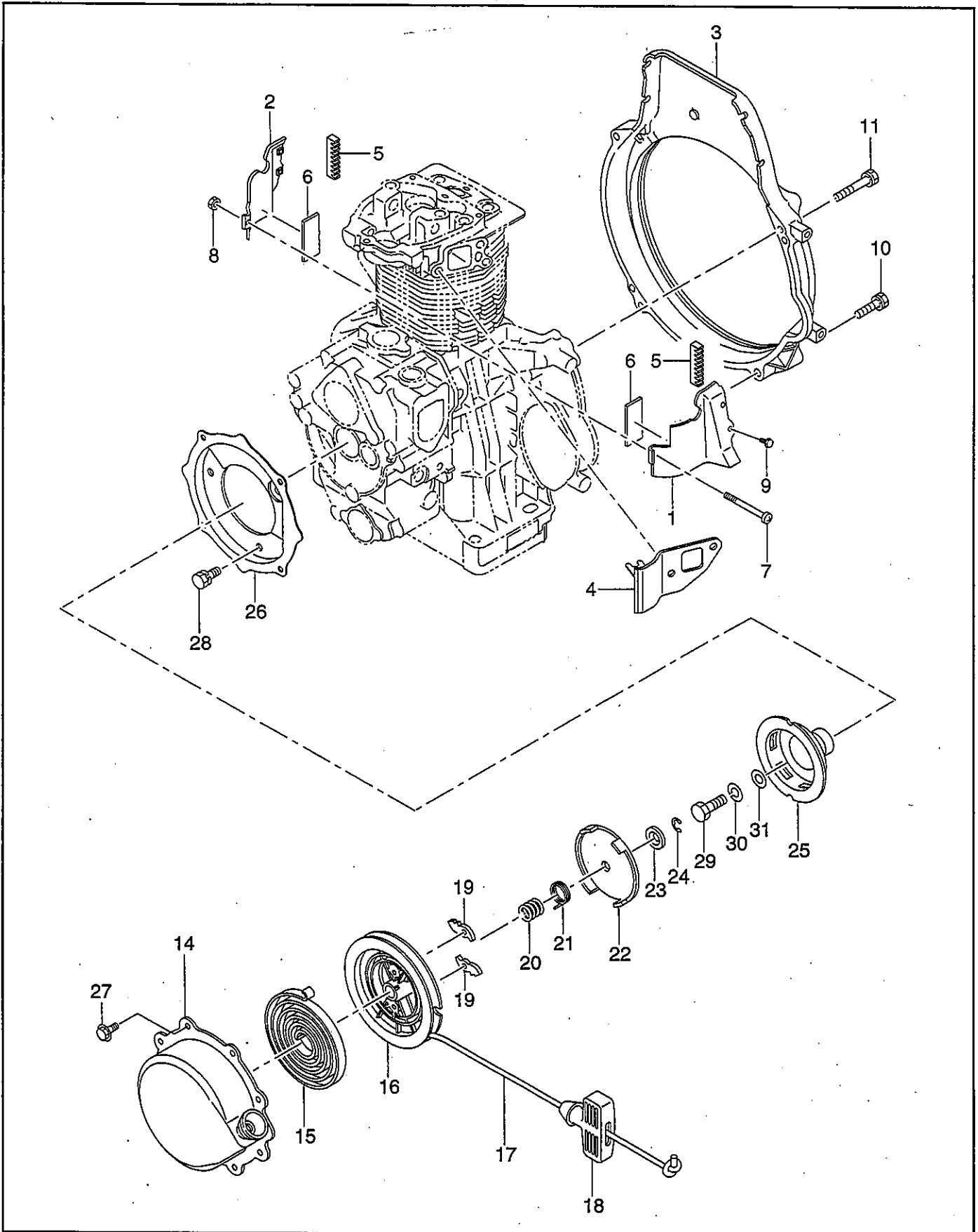
Ref. No.	Part Number	Description	Q'ty	↙ Interchangeability	
					Execution
*1	228-41701-30	GOVERNOR PLATE ASS'Y Includes items 2 thru 8	1		
3	228-45501-03	GOVERNOR GEAR	1		
4	228-66201-03	PUMP SHAFT	1		
5	228-66101-03	OIL PUMP COVER	1		
6	228-63901-03	OIL PUMP, inner	1		
7	033-00400-10	RIVET	2		
8	030-94000-70	LOCK PIN	1		
9	001-13062-00	BOLT and WASHER ASS'Y	2		
10	228-41910-01	GOVERNOR SLEEVE	1		
11	228-42201-03	GOVERNOR SHAFT	1		
12	228-42101-23	GOVERNOR YOKE	1		
13	228-42302-03	GOVERNOR LEVER 1	1		
14	228-42310-02	GOVERNOR LEVER 2 UNIT	1		
15	228-42501-23	GOVERNOR SPRING	1		
16	228-45001-33	START SPRING	1		
17	014-90600-70	ADJUSTING SCREW	1		
18	041-12200-10	BLIND PLUG	1		
19	228-42904-02	CONTROL LINK UNIT	1		
20	231-43311-01	SPEED CONTROL 1, compl.	1		
21	023-00800-10	SPACER	1		
22	021-70800-10	FRICTION WASHER	1		
23	020-00800-50	WASHER	1		
24	017-00800-20	NUT	1		
25	040-11200-30	PLUG	1		
26	045-00600-10	STEEL BALL	1		
27	004-35051-20	SCREW and WASHER ASS'Y	2		
28	006-26100-50	"O" RING	1		
29	002-18060-00	NUT	1		
30	003-13080-00	CLIP	1		
31	003-10100-00	WASHER	1		
32	003-70120-00	GASKET, aluminum	1		
33	003-10080-00	WASHER	2		
34	004-31063-50	SCREW	1		
35	002-18060-00	NUT	1		
36	228-45004-03	LOCK PLATE	1		
37	228-40151-01	CONTROL PANEL, compl.	1		
38	073-20046-00	LABEL, operation	1		
39	228-43361-01	SPEED CONTROL 2, compl.	1		
40	227-43601-03	KNOB	1		
41	228-45301-01	LINK PIVOT	1		
42	231-45005-01	CONTROL SPRING	1		
43	011-50500-10	BOLT	1		
44	004-31051-20	SCREW	1		
45	228-63902-03	OIL PUMP, outer	1		

# FIG.9 GOVERNOR GROUP





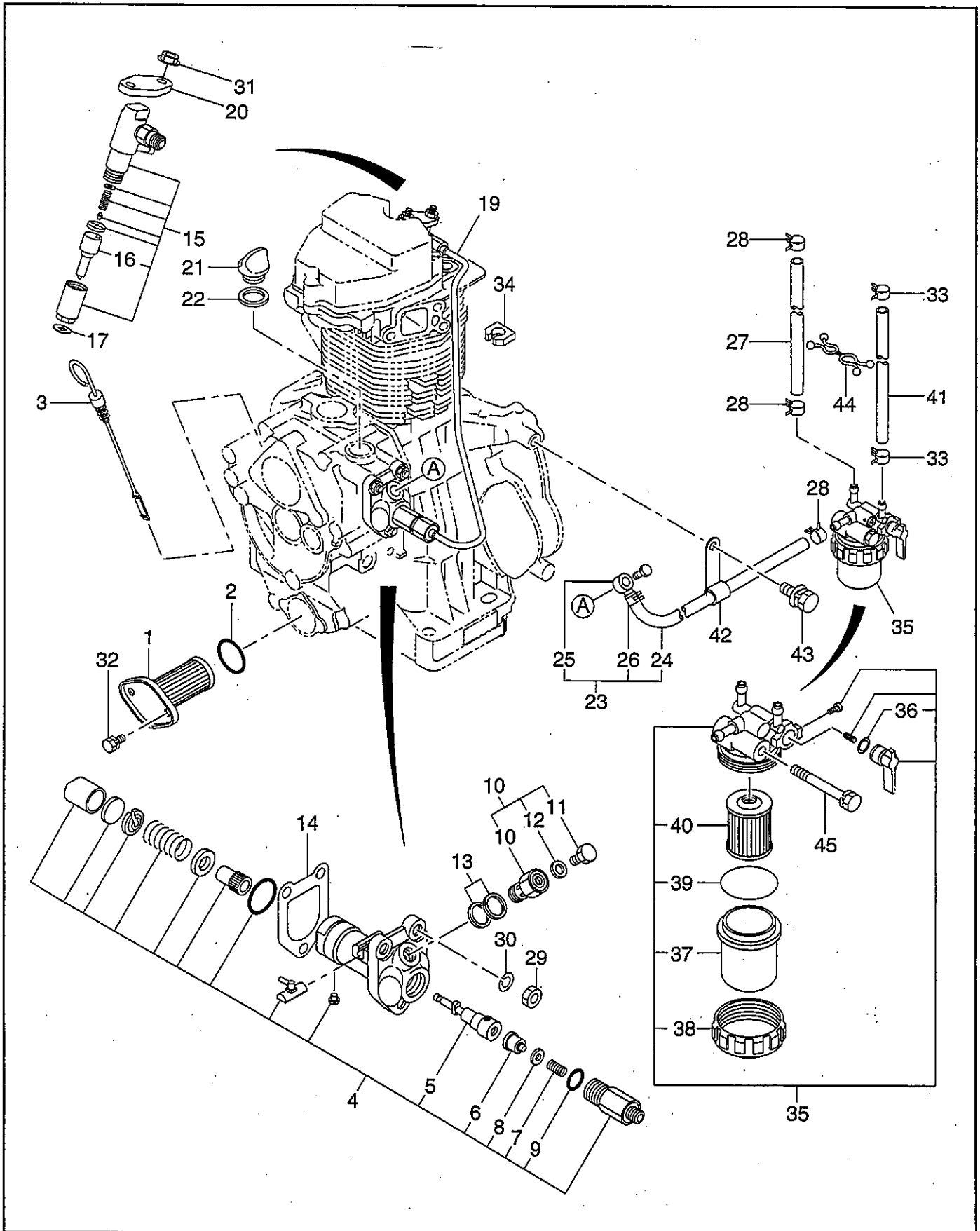
**FIG.10 COOLING and STARTING GROUP**







**FIG.11 FUEL SYSTEM GROUP**

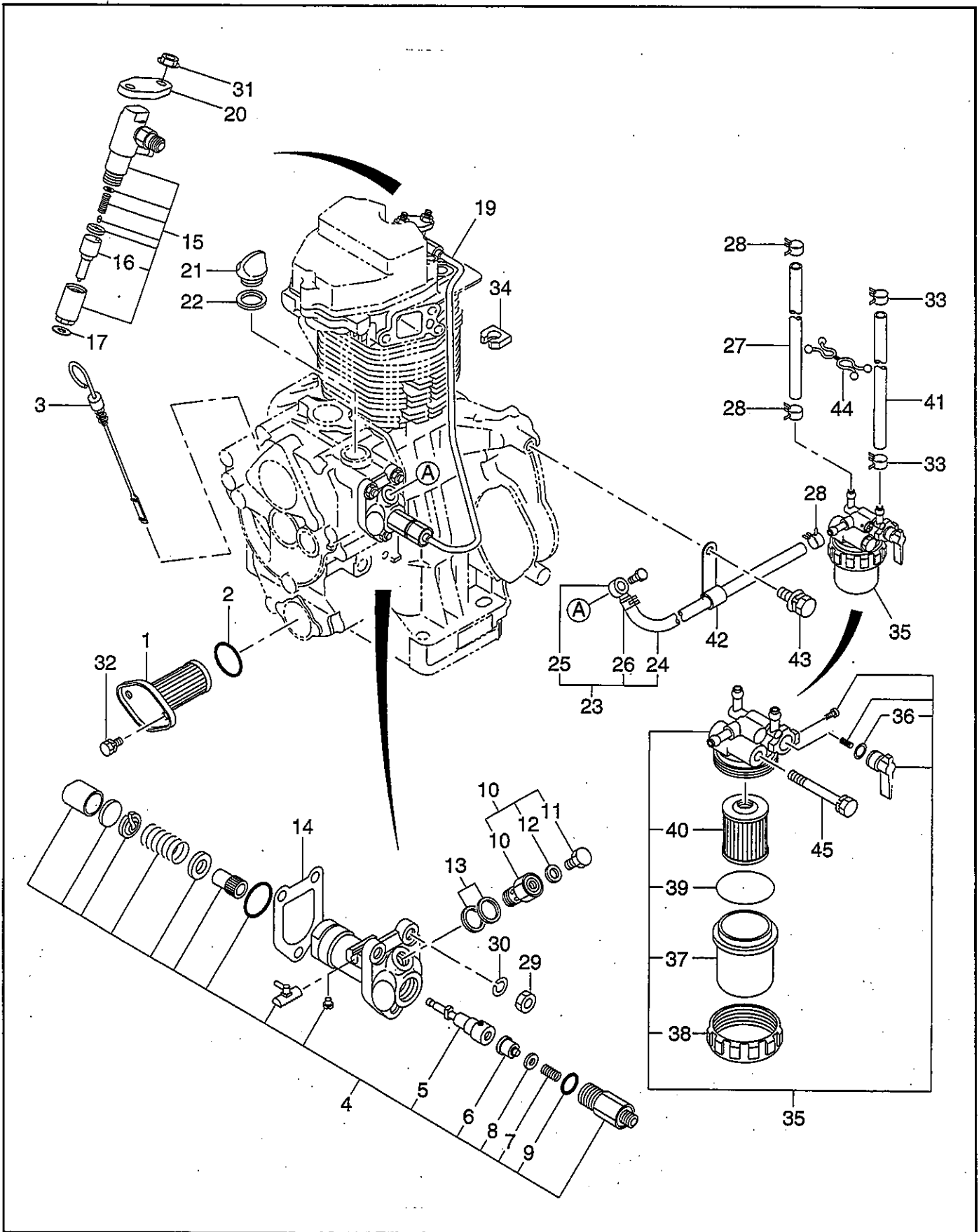


# FIG.11 FUEL SYSTEM GROUP

↙ Interchangeability

Ref. No.	Part Number	Description	Q'ty	Execution
1	228-64301-00	OIL FILTER ASS'Y	1	
2	024-03000-10	"O" RING	1	
3	228-63610-01	OIL GAUGE, compl.	1	
*4	228-63120-00	INJECTION PUMP ASS'Y Includes items 5 thru 9	1	
5	228-63102-08	PULUNGER ASS'Y	1	
6	228-63103-08	DELIVERY VALVE	1	
7	222-63104-08	SPRING, delivery valve	1	
8	222-63105-08	GASKET	1	
9	228-63105-08	"O" RING	1	
*10	228-66501-00	EYE BOLT ASS'Y Includes items 10 thru 12	1	
10	228-63112-08	EYE BOLT	1	
11	228-63113-08	BOLT	1	
12	211-63212-08	GASKET	1	
13	228-66601-03	GASKET, pump	2	
14	228-65017-03	GASKET, pump (t=0.1)	1	
14	228-65022-03	GASKET, pump (t=0.2)	1	
14	228-65018-03	GASKET, pump (t=0.3)	1	
*15	228-63201-10	NOZZLE ASS'Y Includes item 16	1	
16	228-63211-08	NOZZLE	1	
17	228-65004-03	GASKET, nozzle	1	
19	231-63301-01	INJECTION PIPE, compl.	1	
20	243-66001-01	BRACKET, nozzle 1	1	
21	228-65003-03	PLUG	1	
22	021-32000-10	GASKET	1	
*23	228-62611-01	FUEL PIPE 11, compl. Includes items 24 thru 26	1	
24	085-10600-00	RUBBER PIPE (φ 6 × φ 12 × 250mm)	1	
25	052-10500-12	BANJO	1	
26	056-11100-20	HOSE CLAMP	1	
27	085-10600-00	RUBBER PIPE (φ 6 × φ 12 × 150mm)	1	
28	056-11100-20	HOSE CLAMP	3	
29	002-18080-00	NUT	3	
30	003-20080-00	SPRING WASHER	3	
31	002-38060-00	FLANGE NUT	2	
32	980-05060-10	BOLT and WASHER ASS'Y	2	
33	056-10800-10	HOSE CLAMP	2	
34	222-65006-03	GROMMET	1	
*35	228-62106-10	FUEL FILTER ASS'Y Includes items 36 thru 40	1	
36	228-62106-08	"O" RING	1	
37	243-62101-08	CUP	1	
38	228-62108-08	RING NUT	1	
39	228-62109-08	"O" RING	1	
40	228-62110-08	ELEMENT	1	
41	085-14500-00	RUBBER PIPE (φ 4.5 × φ 9 × 180mm)	1	
42	228-67010-01	CLAMP, compl.	1	

**FIG.11 FUEL SYSTEM GROUP**





**FIG.12 ACCESSORIES GROUP**

