



PARTS CATALOG

Robin

Generator

Model

RGV12100

 **FUJI HEAVY INDUSTRIES LTD.**

ISSUE EMD-GP1559

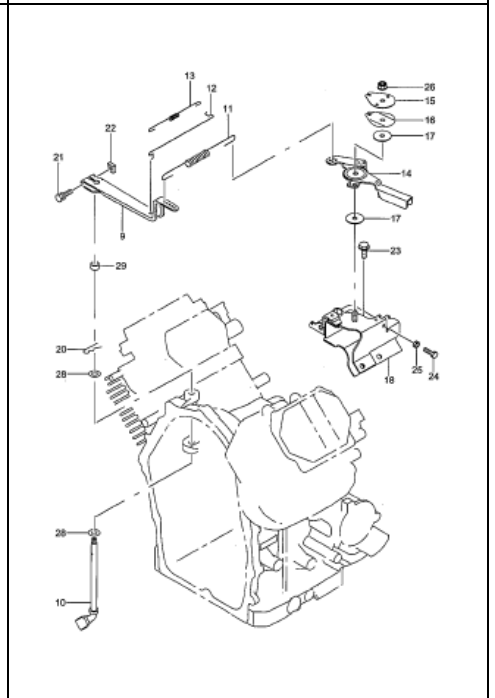
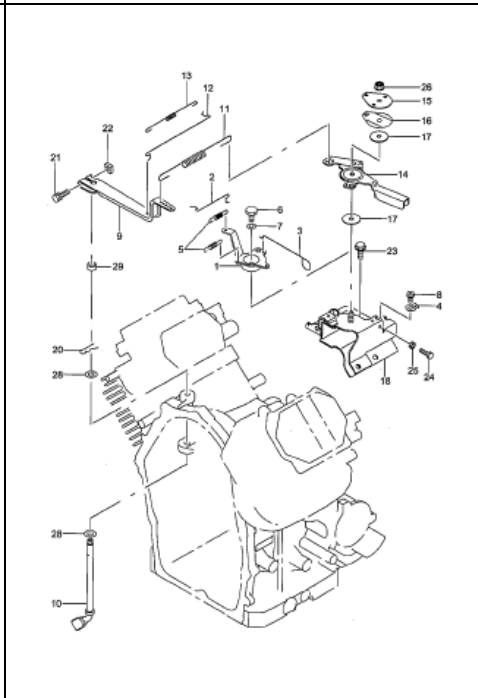
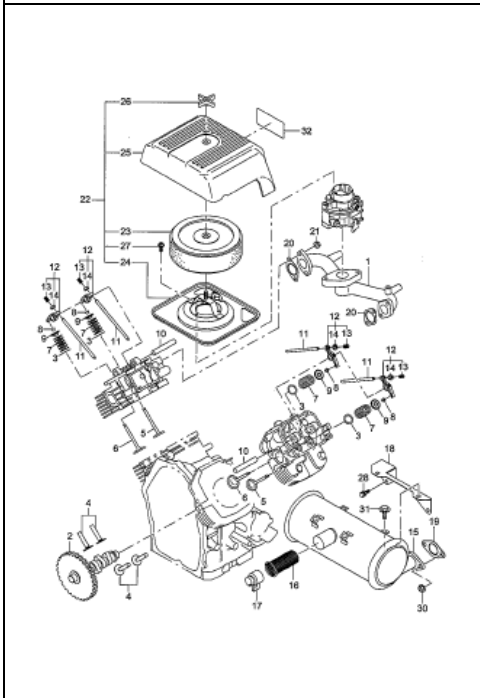
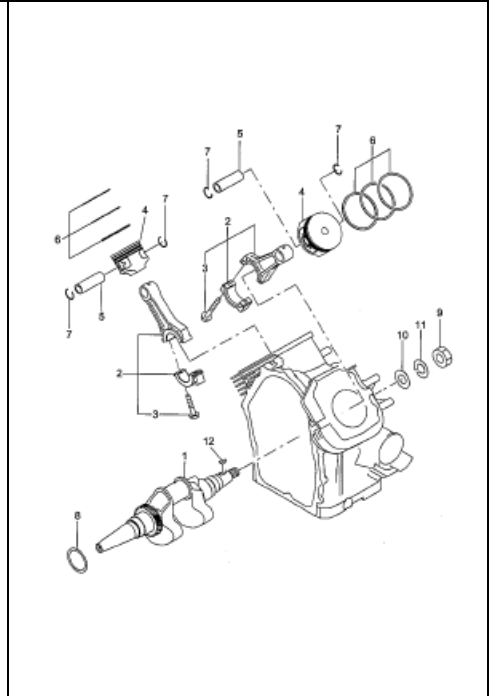
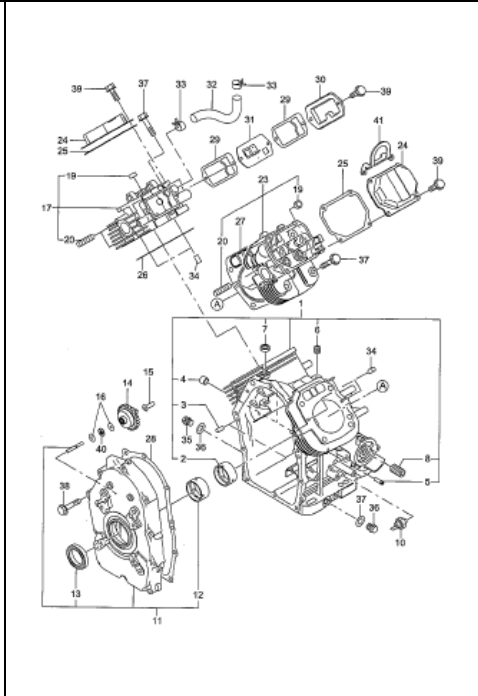
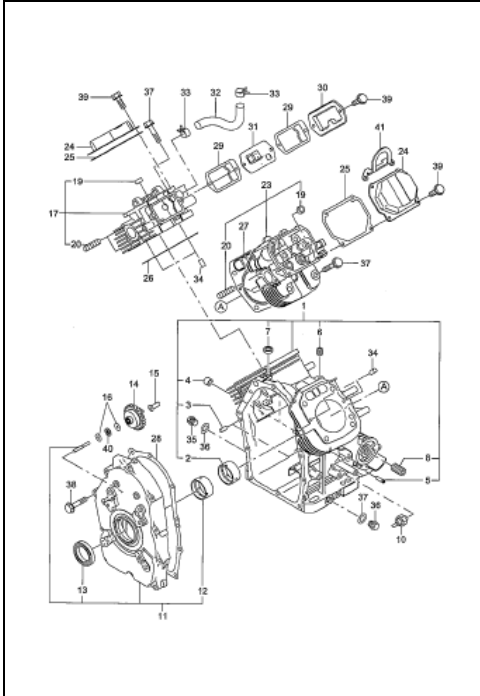
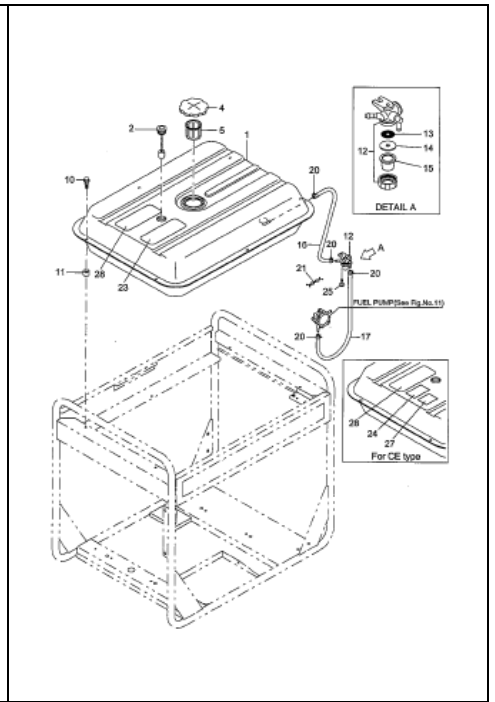
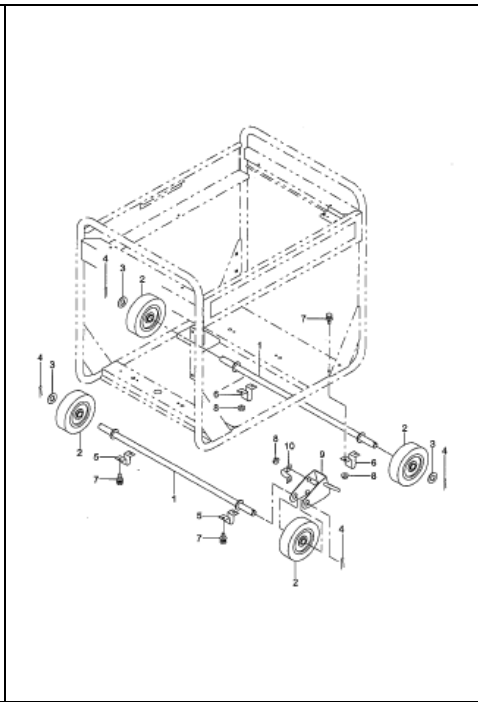
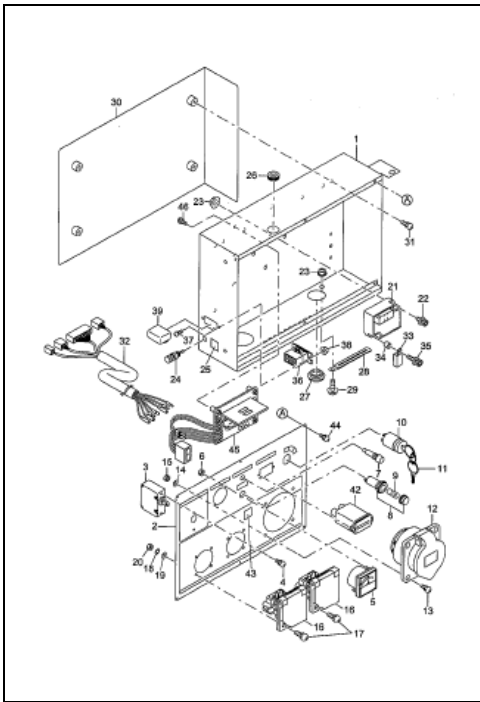


FIG.1 GENERATOR GROUP

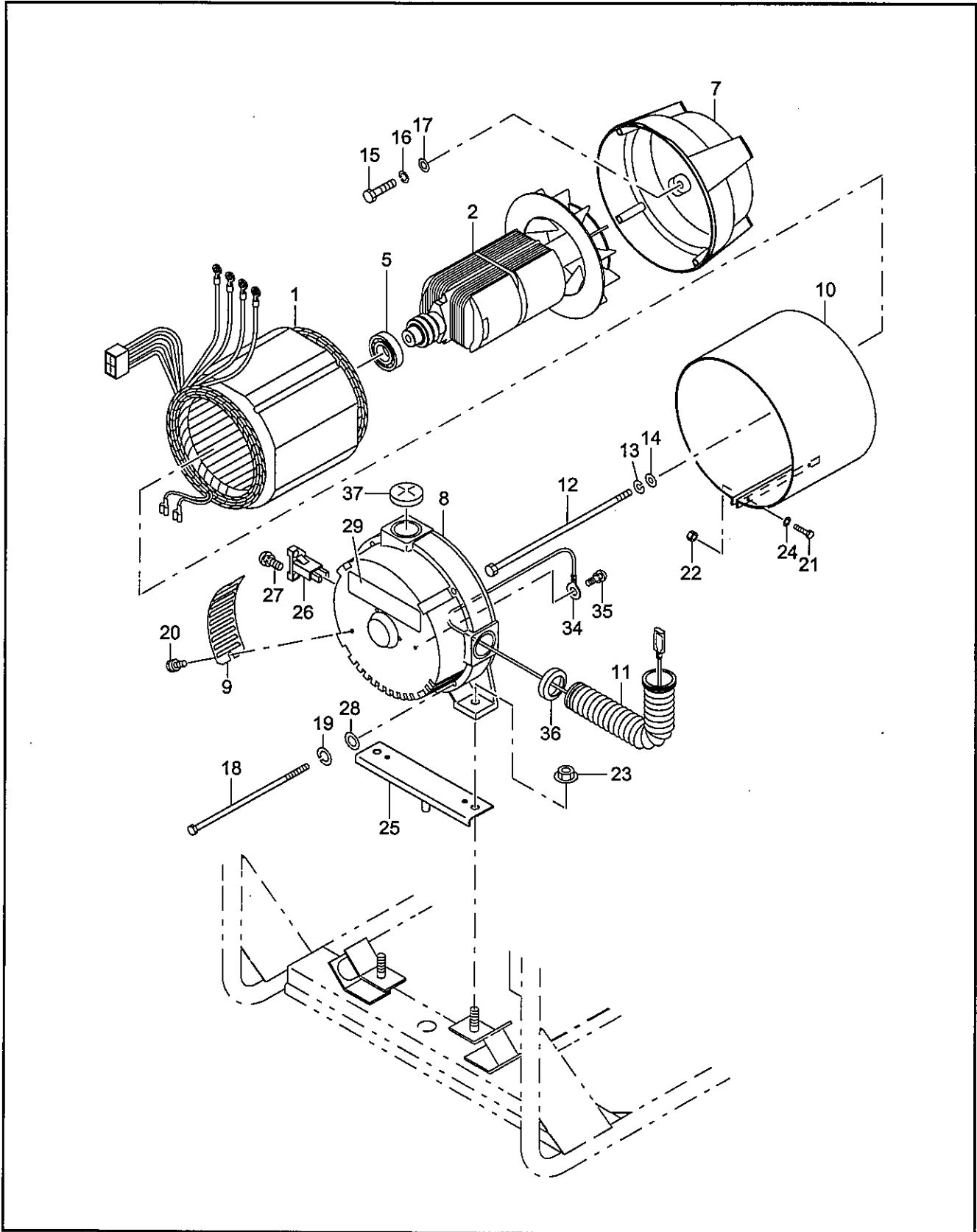


FIG.2 PIPE FRAME GROUP

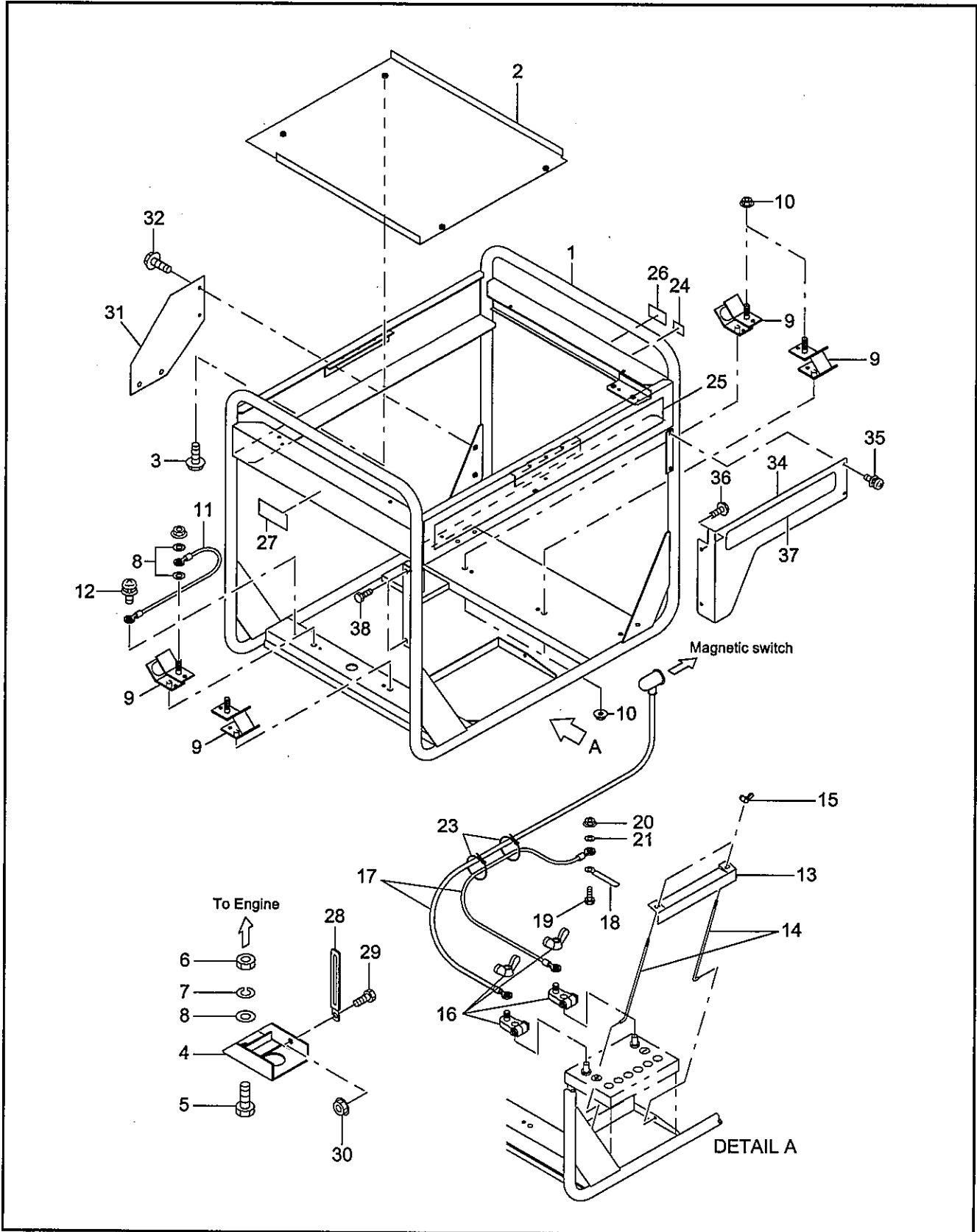


FIG.3-1 CONTROL BOX GROUP (50Hz-220V, 240V)

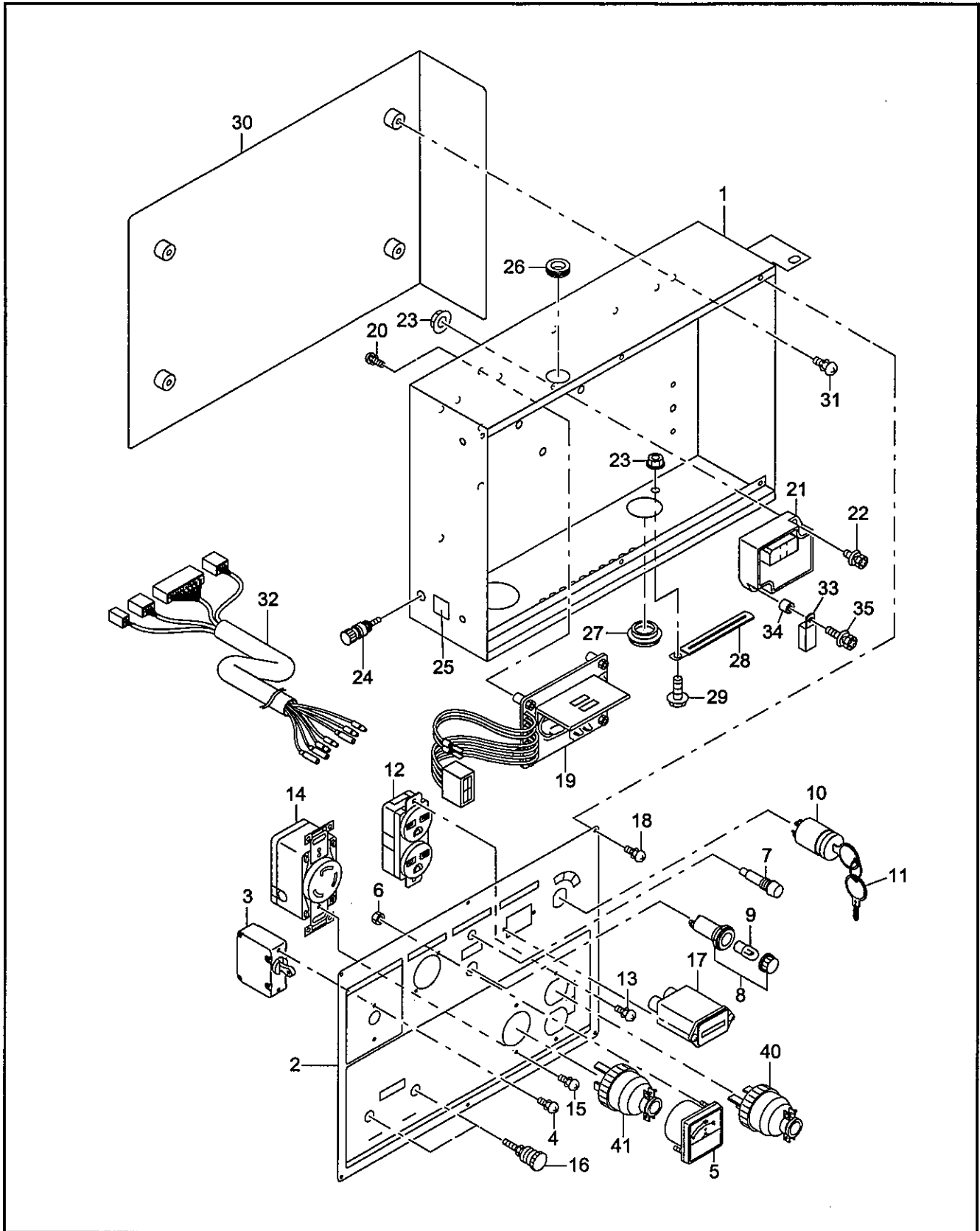


FIG.3-1 CONTROL BOX GROUP (50Hz-220V, 240V)

Interchangeability

Ref. No.	Part Number	Description	Q'ty	Execution
*1	31G-71011-10	CONTROL BOX ASS'Y For 50Hz-220V Includes items 1 thru 35	1	
*1	31G-71011-00	CONTROL BOX ASS'Y For 50Hz-220V Includes items 1 thru 35	1	
*1	31G-71012-10	CONTROL BOX ASS'Y For 50Hz-240V Includes items 1 thru 35	1	
*1	31G-71012-00	CONTROL BOX ASS'Y For 50Hz-240V Includes items 1 thru 35	1	
1	31F-73016-11	CONTROL BOX UNIT	1	
*2	31G-72003-00	CONTROL PANEL ASS'Y Includes items 2 thru 17 For 50Hz-220V	1	
*2	31G-72012-00	CONTROL PANEL ASS'Y Includes items 2 thru 17 For 50Hz-240V	1	
2	31G-73013-01	CONTROL PANEL For 50Hz-220V	1	
2	31G-73019-01	CONTROL PANEL For 50Hz-240V	1	
3	31G-75001-03	NO FUSE BREAKER (1P-36A) For 50Hz-220V	1	
3	31G-75006-03	NO FUSE BREAKER (1P-35A) For 50Hz-240V	1	
4	31B-79011-03	SCREW and WASHER ASS'Y (M3×5mm)	2	
5	391-47900-11	VOLTMETER	1	
6	002-17030-00	NUT (M3)	2	
7	320-75118-08	PILOT LAMP	1	
*8	393-43101-01	LAMP (OIL) Includes item 9	1	
9	393-45006-01	LAMP (18V-0.11A)	1	
*10	066-00003-30	KEY SWITCH Includes item 11	1	
11	066-00099-80	KEY	2	
12	378-45736-08	AC RECEPTACLE (250V-15A)	1	
13	351-49920-08	SCREW and WASHER ASS'Y (M4×10mm)	2	
14	353-45703-08	AC RECEPTACLE (250V-30A, TWIST LOCK)	1	
15	31C-79001-03	SCREW and WASHER ASS'Y (M3.5×10mm)	2	
16	31F-75017-03	TERMINAL	2	
17	393-40650-08	HOUR METER	1	
18	351-49920-08	SCREW and WASHER ASS'Y (M4×10mm)	6	
19	31G-74017-01	AVR ASS'Y For 50Hz-220V	1	
19	31G-74015-01	AVR ASS'Y For 50Hz-240V	1	
20	392-49986-08	SCREW and WASHER ASS'Y (M4×6mm)	4	
21	KU3-11062-11	ECU(O/S & R/C),compl.	1	
21	KU3-11062-01	ECU(O/S & R/C),compl.	1	
22	004-36062-00	SCREW and WASHER ASS'Y (M6×20mm)	1	
22	004-36062-00	SCREW and WASHER ASS'Y (M6×20mm)	2	
23	002-38060-00	FLANGE NUT (M6)	3	
24	353-45716-08	TERMINAL BOLT	1	
25	30G-49106-08	LABEL, earth	1	
26	024-11500-10	GROMMET	1	
27	31H-75009-03	GROMMET	1	

FIG.3-1 CONTROL BOX GROUP (50Hz-220V, 240V)

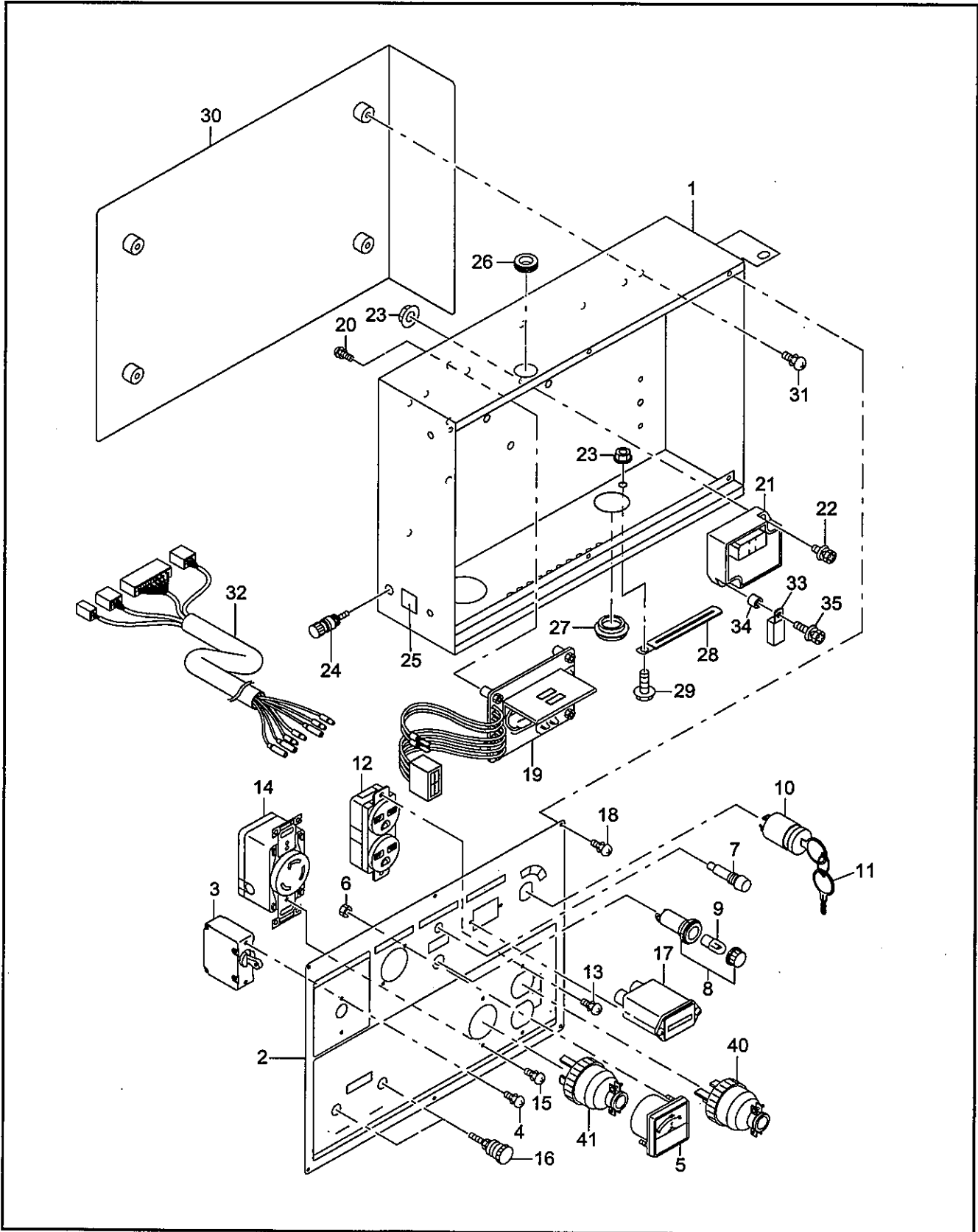


FIG.3-2 CONTROL BOX GROUP (60Hz-120V/240V)

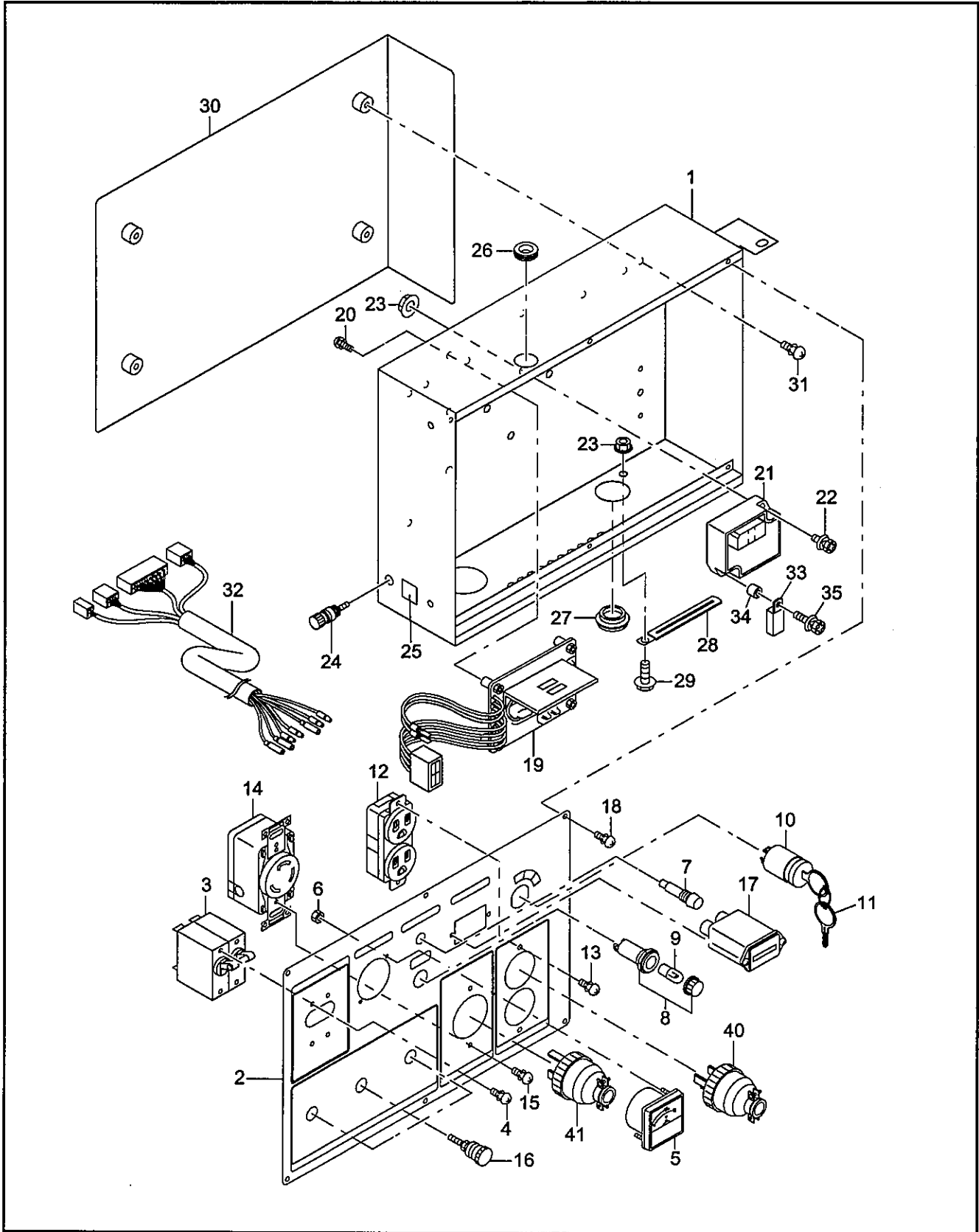


FIG.3-2 CONTROL BOX GROUP (60Hz-120V/ 240V)

Interchangeability

Ref. No.	Part Number	Description	Q'ty	Execution
*1	31G-71015-10	CONTROL BOX ASS'Y Includes items 1 thru 35	1	
*1	31G-71015-00	CONTROL BOX ASS'Y Includes items 1 thru 35	1	
1	31F-73016-11	CONTROL BOX UNIT	1	
*2	31G-72014-00	CONTROL PANEL ASS'Y Includes items 2 thru 17	1	
2	31G-73027-01	CONTROL PANEL	1	
3	31G-75002-03	NO FUSE BREAKER (2P-39A)	1	
4	31B-79011-03	SCREW and WASHER ASS'Y (M3×5mm)	4	
5	391-47900-11	VOLTMETER	1	
6	002-17030-00	NUT (M3)	2	
7	320-75118-08	PILOT LAMP	1	
*8	393-43101-01	LAMP (OIL) Includes item 9	1	
9	393-45006-01	LAMP (18V-0.11A)	1	
*10	066-00003-30	KEY SWITCH Includes item 11	1	
11	066-00099-80	KEY	2	
12	343-11362-18	AC RECEPTACLE (125V-15A)	1	
13	351-49920-08	SCREW and WASHER ASS'Y (M4×10mm)	2	
14	353-45703-08	AC RECEPTACLE (250V-30A, TWIST LOCK)	1	
15	31C-79001-03	SCREW and WASHER ASS'Y (M3.5×10mm)	2	
16	31F-75017-03	TERMINAL	3	
17	393-40651-08	HOUR METER	1	
18	351-49920-08	SCREW and WASHER ASS'Y (M4×10mm)	6	
19	31G-74015-01	AVR ASS'Y	1	
20	392-49986-08	SCREW and WASHER ASS'Y (M4×6mm)	4	
21	KU3-11062-11	ECU(O/S & R/C),compl.	1	
21	KU3-11062-01	ECU(O/S & R/C),compl.	1	
22	004-36062-00	SCREW and WASHER ASS'Y (M6×20mm)	1	
22	004-36062-00	SCREW and WASHER ASS'Y (M6×20mm)	2	
23	002-38060-00	FLANGE NUT (M6)	3	
24	353-45716-08	TERMINAL BOLT	1	
25	30G-49106-08	LABEL, earth	1	
26	024-11500-10	GROMMET	1	
27	31H-75009-03	GROMMET	1	
28	056-60002-50	CLAMP	1	
29	011-00600-20	FLANGE BOLT (M6×12mm)	1	
30	31F-73018-01	PLATE	1	
31	366-49997-08	SCREW and WASHER ASS'Y (M5×10mm)	4	
32	31G-76010-03	WIRE, compl.	1	
32	31G-76001-03	WIRE, compl.	1	
33	391-48301-01	RELAY	1	
34	023-00603-30	SPACER	1	
35	001-37060-35	SCREW (M6×35mm)	1	
40	358-95002-03	AC PLUG (250V-15A)	2	

FIG.3-2 CONTROL BOX GROUP (60Hz-120V/240V)

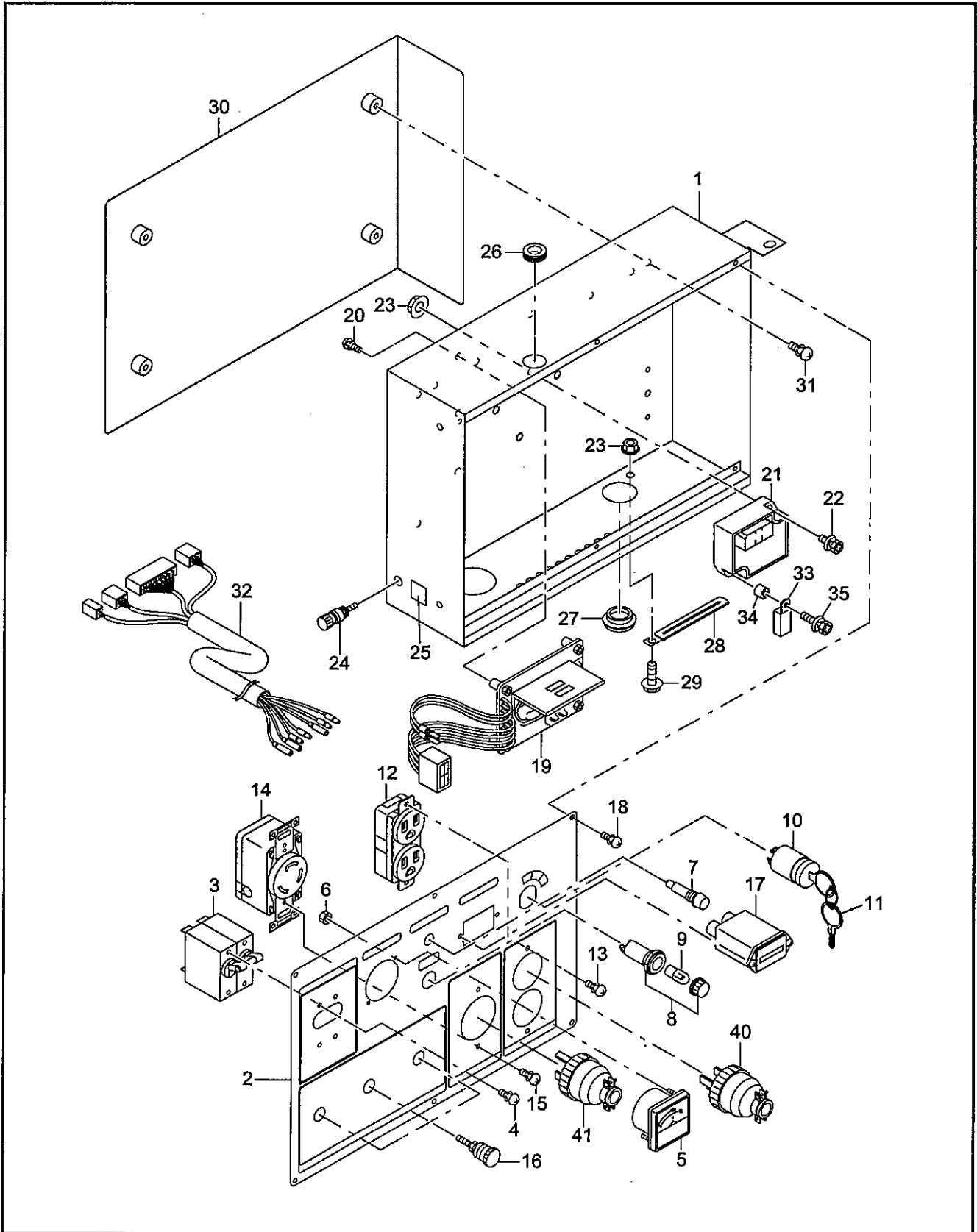


FIG.3-3 CONTROL BOX GROUP (60Hz-110V/220V)
(Remote control type)

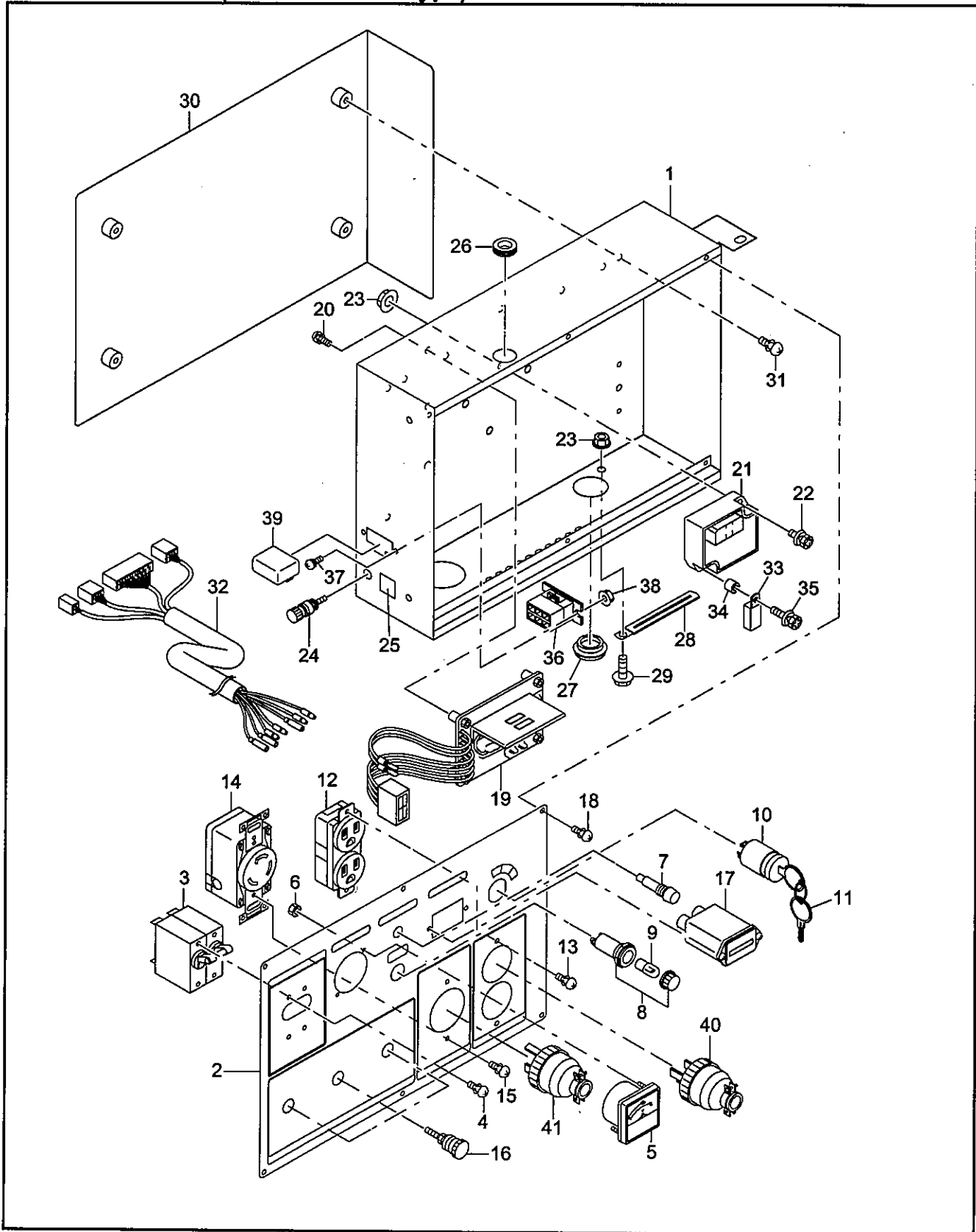


FIG.3-3 CONTROL BOX GROUP (60Hz-110V, 220V)
(Remote control type)

Ref. No.	Part Number	Description	Q'ty	Interchangeability	
					Execution
*1	31G-71014-10	CONTROL BOX ASS'Y Includes items 1 thru 39	1		
*1	31G-71014-00	CONTROL BOX ASS'Y Includes items 1 thru 39	1		
1	31G-73012-01	CONTROL BOX UNIT	1		
*2	31G-72013-00	CONTROL PANEL ASS'Y Includes items 2 thru 17	1		
2	31G-73024-01	CONTROL PANEL	1		
3	31G-75003-03	NO FUSE BREAKER (2P-42A)	1		
4	31B-79011-03	SCREW and WASHER ASS'Y (M3×5mm)	4		
5	391-47900-11	VOLTMETER	1		
6	002-17030-00	NUT (M3)	2		
7	320-75118-08	PILOT LAMP	1		
*8	393-43101-01	LAMP (OIL) Includes item 9	1		
9	393-45006-01	LAMP (18V-0.11A)	1		
*10	066-00003-30	KEY SWITCH Includes item 11	1		
11	066-00099-80	KEY	2		
12	343-11362-18	AC RECEPTACLE (125V-15A)	1		
13	351-49920-08	SCREW and WASHER ASS'Y (M4×10mm)	2		
14	353-45703-08	AC RECEPTACLE (250V-30A, TWIST LOCK)	1		
15	31C-79001-03	SCREW and WASHER ASS'Y (M3.5×10mm)	2		
16	31F-75017-03	TERMINAL	3		
17	393-40651-08	HOUR METER	1		
18	351-49920-08	SCREW and WASHER ASS'Y (M4×10mm)	6		
19	31G-74018-01	AVR ASS'Y	1		
20	392-49986-08	SCREW and WASHER ASS'Y (M4×6mm)	4		
21	KU3-11062-11	ECU(O/S & R/C),compl.	1		
21	KU3-11062-01	ECU(O/S & R/C),compl.	1		
22	004-36062-00	SCREW and WASHER ASS'Y (M6×20mm)	1		
22	004-36062-00	SCREW and WASHER ASS'Y (M6×20mm)	2		
23	002-38060-00	FLANGE NUT (M6)	3		
24	353-45716-08	TERMINAL BOLT	1		
25	30G-49106-08	LABEL, earth	1		
26	024-11500-10	GROMMET	1		
27	31H-75009-03	GROMMET	1		
28	056-60002-50	CLAMP	1		
29	011-00600-20	FLANGE BOLT (M6×12mm)	1		
30	31F-73018-01	PLATE	1		
31	366-49997-08	SCREW and WASHER ASS'Y (M5×10mm)	4		
32	31G-76010-03	WIRE, compl.	1		
32	31G-76001-03	WIRE, compl.	1		
33	391-48301-01	RELAY	1		
34	023-00603-30	SPACER	1		
35	001-37060-35	SCREW (M6×35mm)	1		
36	353-47200-08	CONNECTOR (6P)	1		

FIG.3-3 CONTROL BOX GROUP (60Hz-110V/220V)
 (Remote control type)

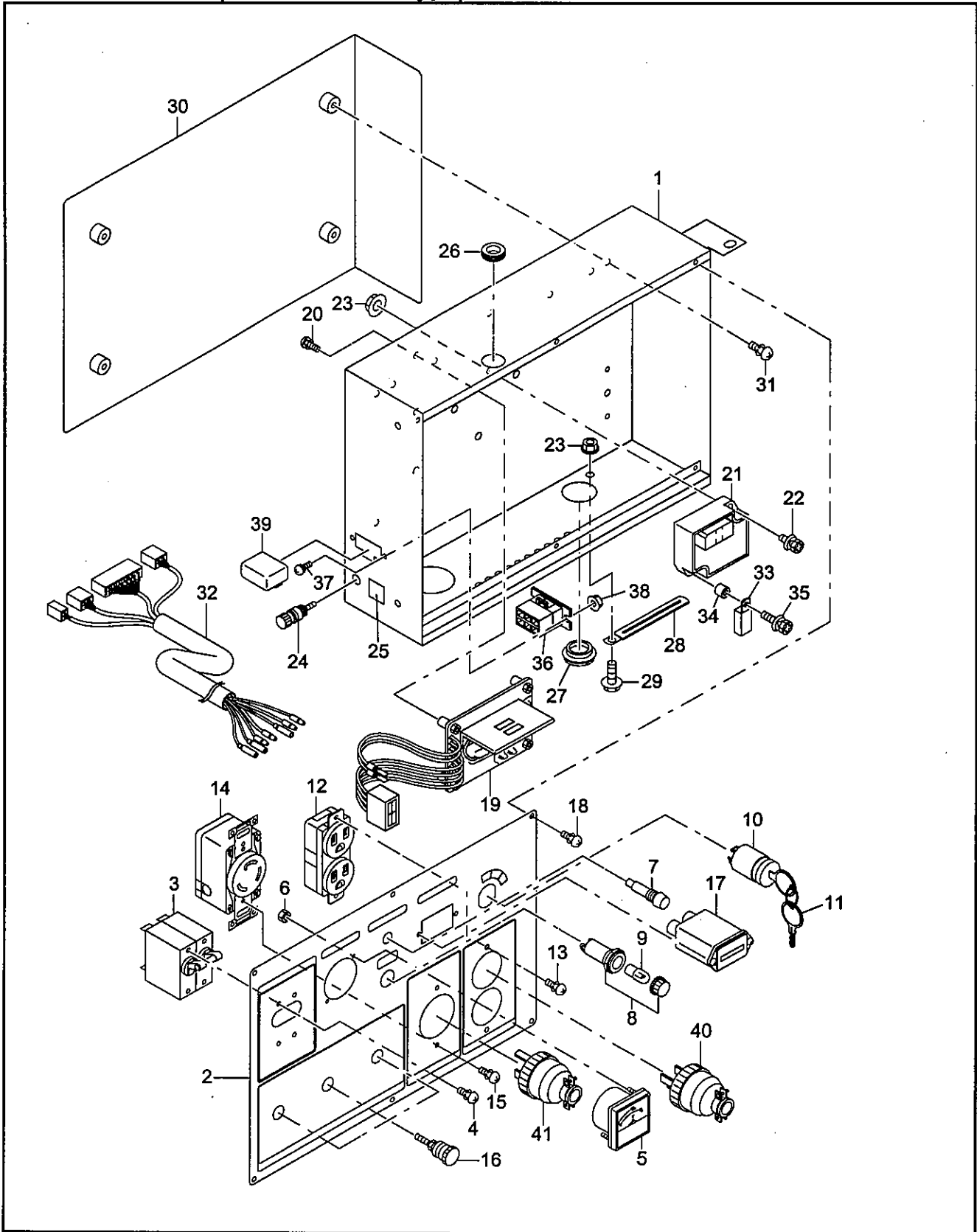


FIG.3-4 CONTROL BOX GROUP (GERMANY & BS RECEPTACLE)
 (Remote control type)

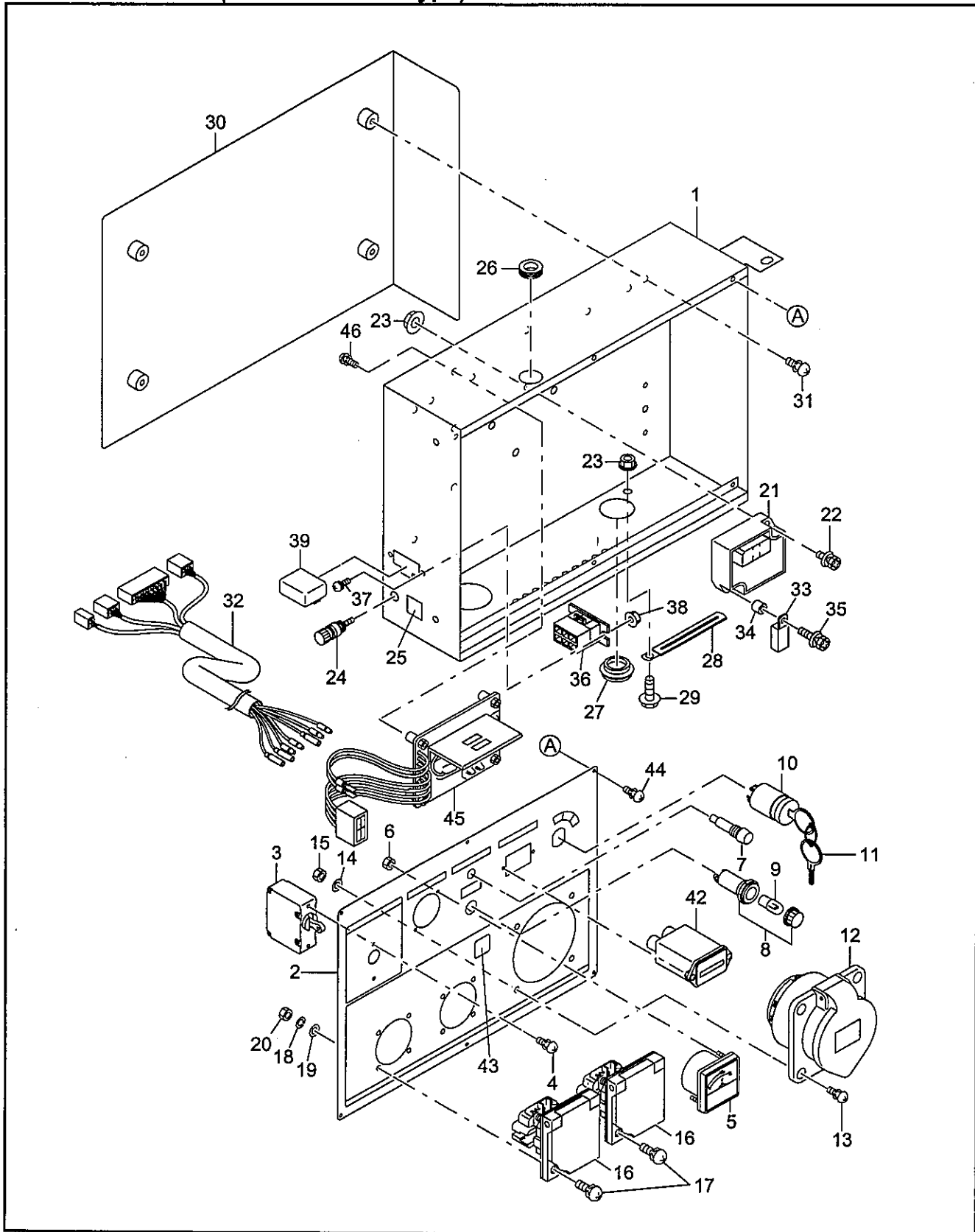


FIG.3-4 CONTROL BOX GROUP (GERMANY & BS RECEPTACLE)

(Remote control type)

Interchangeability

Ref. No.	Part Number	Description	Q'ty	Execution
*1	31G-71010-10	CONTROL BOX ASS'Y Includes items 1 thru 46	1	
*1	31G-71010-00	CONTROL BOX ASS'Y Includes items 1 thru 46	1	
1	31G-73012-01	CONTROL BOX UNIT	1	
*2	31G-72011-00	CONTROL PANEL ASS'Y Includes items 2 thru 20, 42 and 43	1	
2	31G-73022-01	CONTROL PANEL	1	
3	31G-75005-03	NO FUSE BREAKER (1P-36A)	1	
4	31B-79011-03	SCREW and WASHER ASS'Y (M3×5mm)	4	
5	391-47900-11	VOLTMETER	1	
6	002-17030-00	NUT (M3)	2	
7	320-75118-08	PILOT LAMP	1	
*8	393-43101-01	LAMP (OIL) Includes item 9	1	
9	393-45006-01	LAMP (18V-0.11A)	1	
*10	066-00003-30	KEY SWITCH Includes item 11	1	
11	066-00099-80	KEY	2	
12	353-45733-08	AC RECEPTACLE (240V-32A)	1	
13	004-36052-00	SCREW and WASHER ASS'Y (M5×20mm)	4	
14	003-10050-00	WASHER	4	
15	002-17050-00	NUT	4	
16	388-45746-08	AC RECEPTACLE (250V-16A)	2	
17	004-31031-50	SCREW (M3×15mm)	8	
18	003-20030-00	SPRING WASHER	8	
19	003-10030-00	WASHER	8	
20	002-17030-00	NUT	8	
21	KU3-11062-11	ECU(O/S & R/C),compl.	1	
21	KU3-11062-01	ECU(O/S & R/C),compl.	1	
22	004-36062-00	SCREW and WASHER ASS'Y (M6×20mm)	1	
22	004-36062-00	SCREW and WASHER ASS'Y (M6×20mm)	2	
23	002-38060-00	FLANGE NUT (M6)	3	
24	353-45716-08	TERMINAL BOLT	1	
25	30G-49106-08	LABEL, earth	1	
26	024-11500-10	GROMMET	1	
27	31H-75009-03	GROMMET	1	
28	056-60002-50	CLAMP	1	
29	011-00600-20	FLANGE BOLT (M6×12mm)	1	
30	31F-73018-01	PLATE	1	
31	366-49997-08	SCREW and WASHER ASS'Y (M5×10mm)	4	
32	31G-76010-03	WIRE, compl.	1	
32	31G-76001-03	WIRE, compl.	1	
33	391-48301-01	RELAY	1	
34	023-00603-30	SPACER	1	
35	001-37060-35	SCREW (M6×35mm)	1	

FIG.3-4 CONTROL BOX GROUP (GERMANY & BS RECEPTACLE)
(Remote control type)

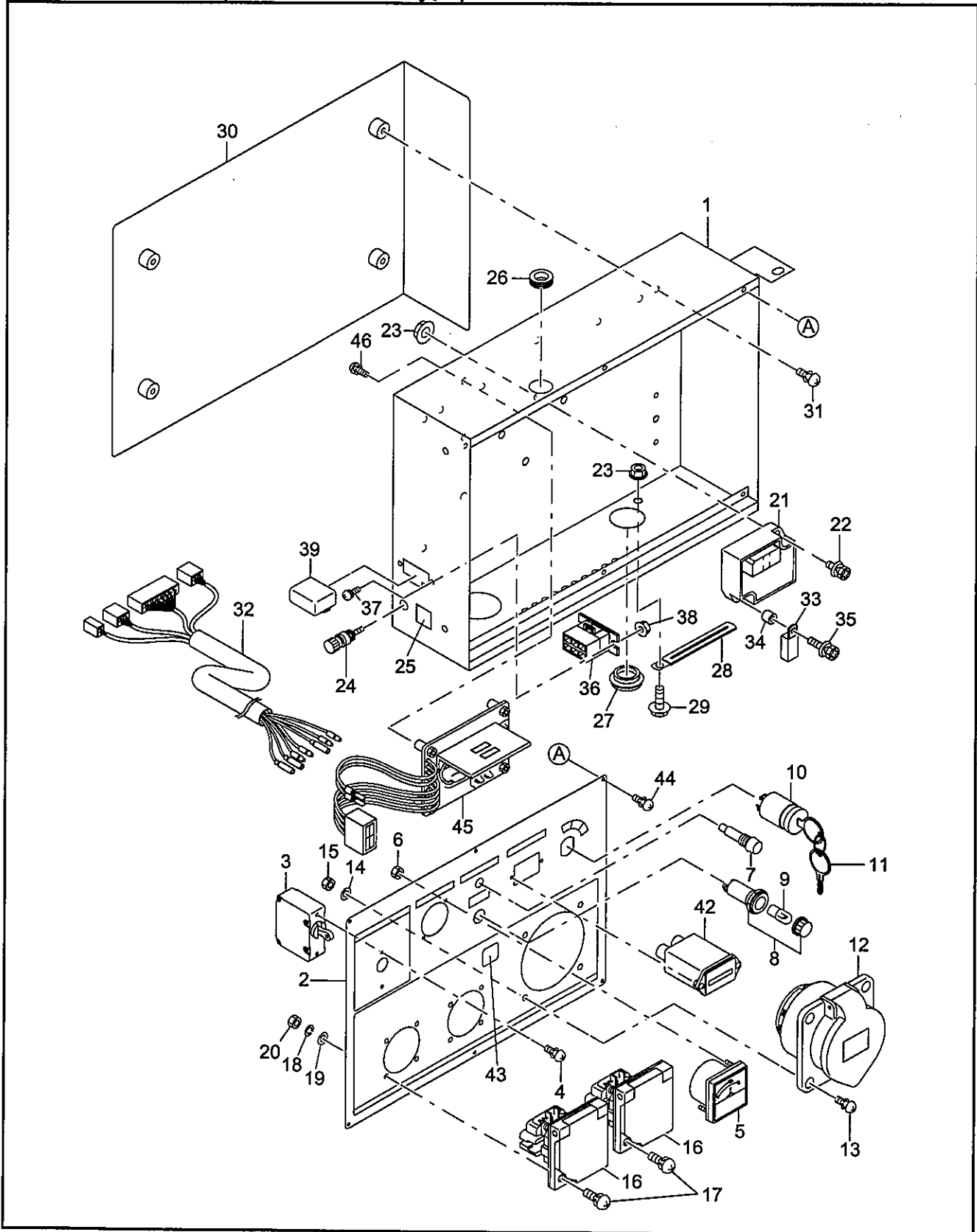


FIG.4 4-WHEEL KIT GROUP

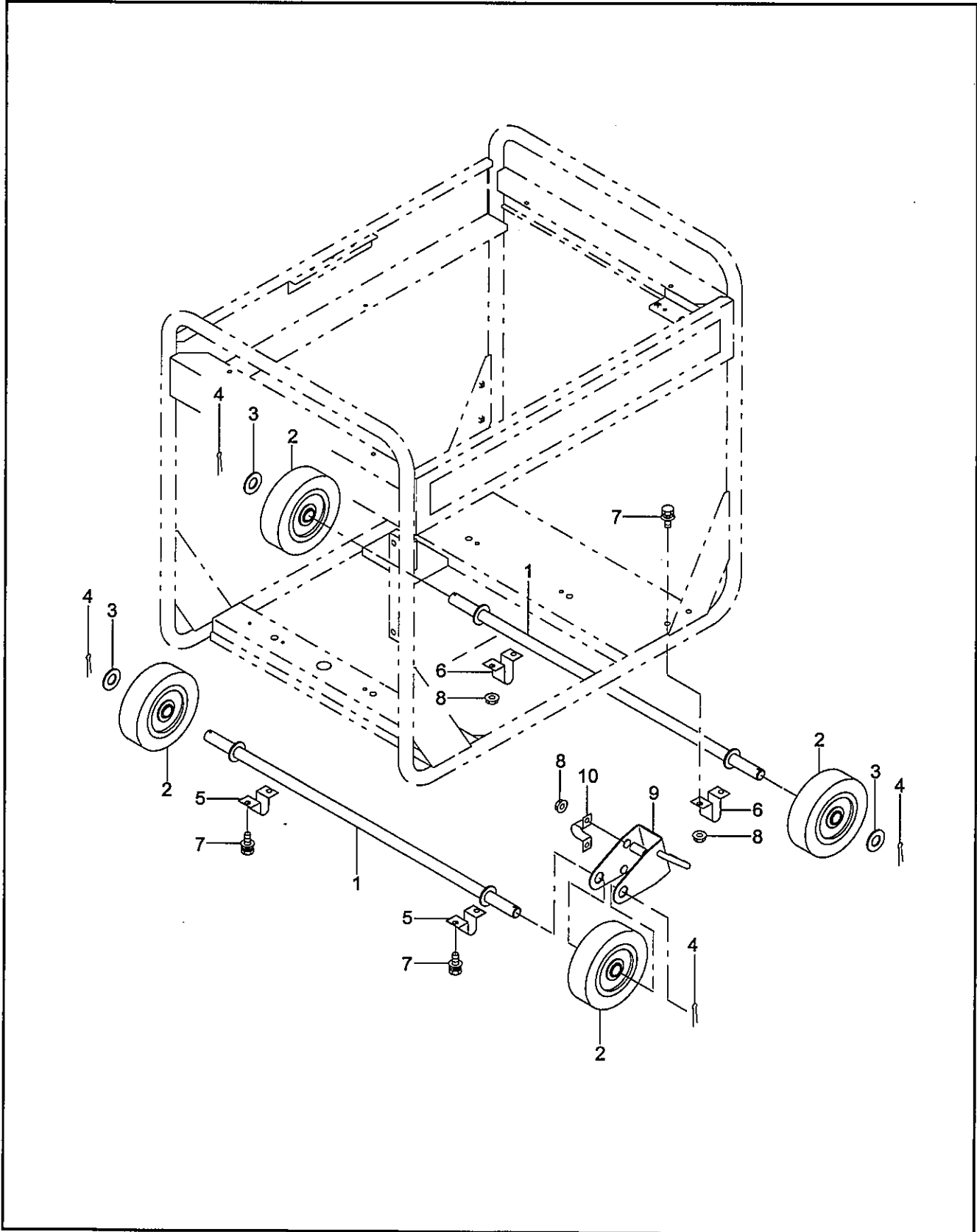


FIG.5 FUEL TANK GROUP

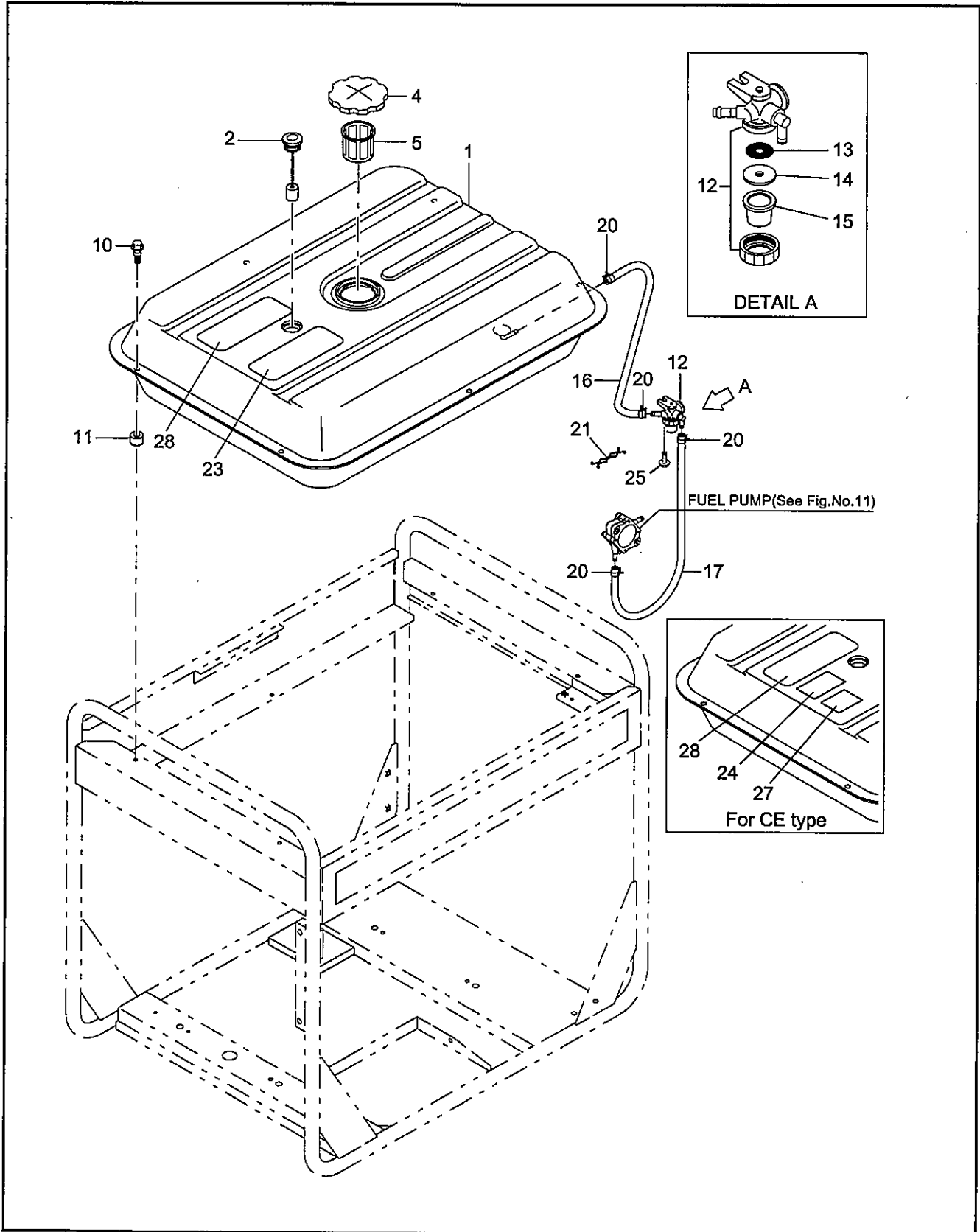


FIG.6 CRANKCASE GROUP

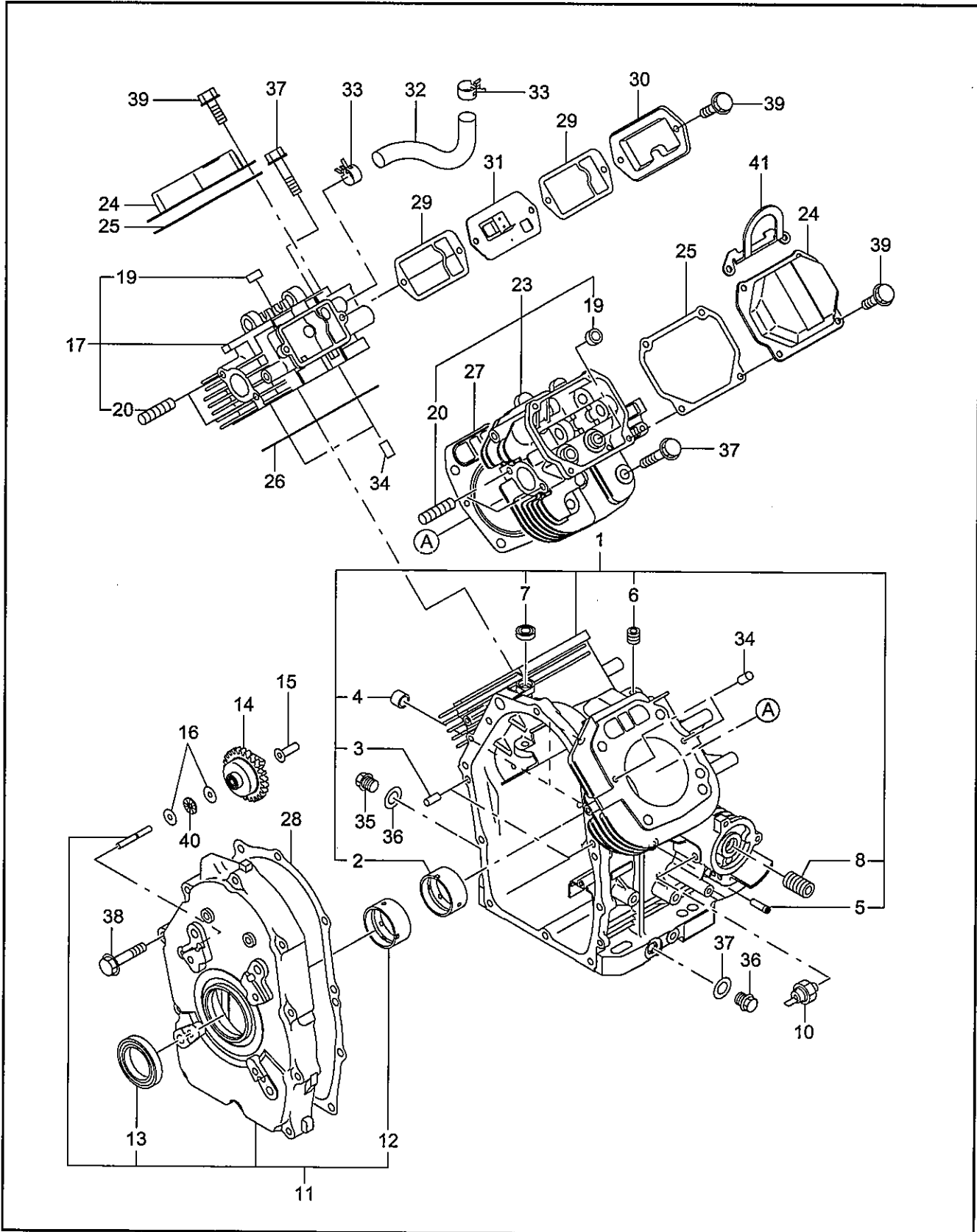


FIG.6 CRANKCASE GROUP

				└ Interchangeability	
Ref. No.	Part Number	Description	Q'ty		Execution
*1	263-10101-21	CRANKCASE, compl. Includes items 2 thru 8	1	└ └ └	
*1	263-10101-11	CRANKCASE, compl. Includes items 2 thru 8	1		
*1	263-10101-01	CRANKCASE, compl. Includes items 2 thru 8	1		
2	263-15802-03	MAIN BEARING	1	└ └	
2	263-15801-03	MAIN BEARING	1		
3	005-26081-80	DOWEL PIN	2		
4	142-55601-03	PIPE	2		
5	159-65401-03	PIPE (PULSE)	1		
6	235-15421-03	BLIND PLUG	1		
7	044-00800-10	OIL SEAL	1		
8	263-15901-03	UNION	1		
10	248-76301-01	SWITCH OIL PRESSURE	1		
*11	263-11101-11	MAIN BEARING COVER, compl. Includes items 12 and 13	1	└ └	
*11	263-11101-01	MAIN BEARING COVER, compl. Includes items 12 and 13	1		
12	263-15802-03	MAIN BEARING	1	└ └	
12	263-15801-03	MAIN BEARING	1		
13	044-04200-30	OIL SEAL	1	└ └	
13	044-04200-20	OIL SEAL	1		
14	263-45001-A1	GOVERNOR GEAR, compl.	1	└ └	
14	263-45001-01	GOVERNOR GEAR, compl.	1		
15	263-41901-03	GOVERNOR SLEEVE	1		
16	263-46214-A3	WASHER	2		
*17	263-13001-11	CYLINDER HEAD 1, compl. Includes items 19 and 20	1	└ └	
*17	263-13001-01	CYLINDER HEAD 1, compl. Includes items 19 and 20	1		
19	132-07AA0-50	SEAL-INTAKE VALVE	2		
20	010-50802-90	STUD	8		
*23	263-13101-11	CYLINDER HEAD 2, compl. Includes items 19 and 20	1	└ └	
*23	263-13101-01	CYLINDER HEAD 2, compl. Includes items 19 and 20	1		
24	246-15501-01	ROCKER COVER, compl.	2		
25	246-16002-13	GASKET, rocker cover	2		
26	263-15001-13	GASKET 1, cyl. head	1		
27	263-15101-13	GASKET 2, cyl. head	1		
28	263-16001-A3	GASKET, main bearing cover	1	└ └	
28	263-16001-03	GASKET, main bearing cover	1		
29	263-16006-03	GASKET, breather plate	2		
30	263-14301-03	BREATHER COVER	1		
31	263-14401-01	BREATHER PLATE, compl.	1		
32	263-18001-03	RUBBER PIPE	1		
33	056-11800-20	HOSE CLAMP	2		
34	031-00600-20	DOWEL PIN	4		
35	040-11400-30	PLUG	2		
36	021-11400-20	GASKET	2		

FIG.6 CRANKCASE GROUP

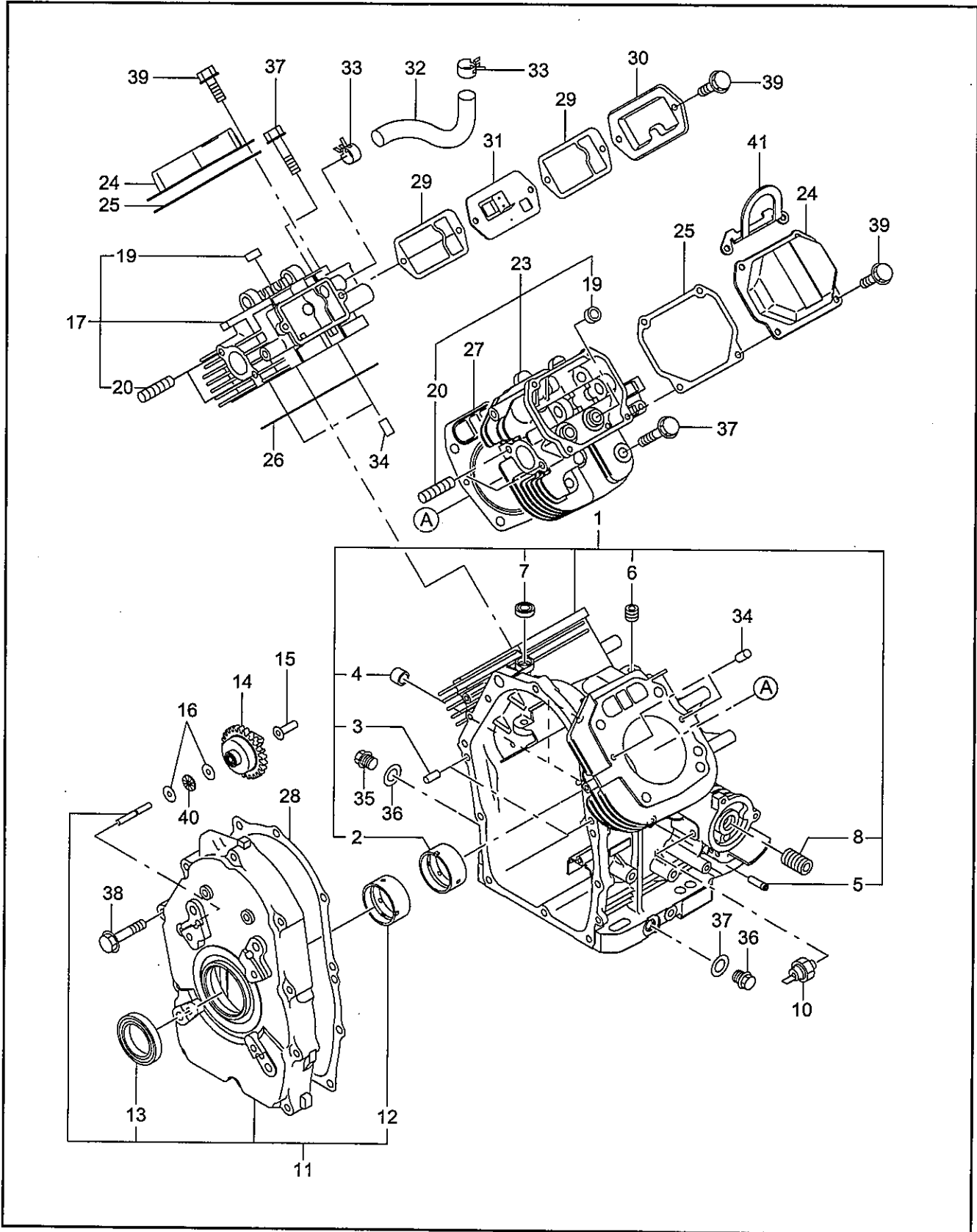


FIG.7 CRANKSHAFT GROUP

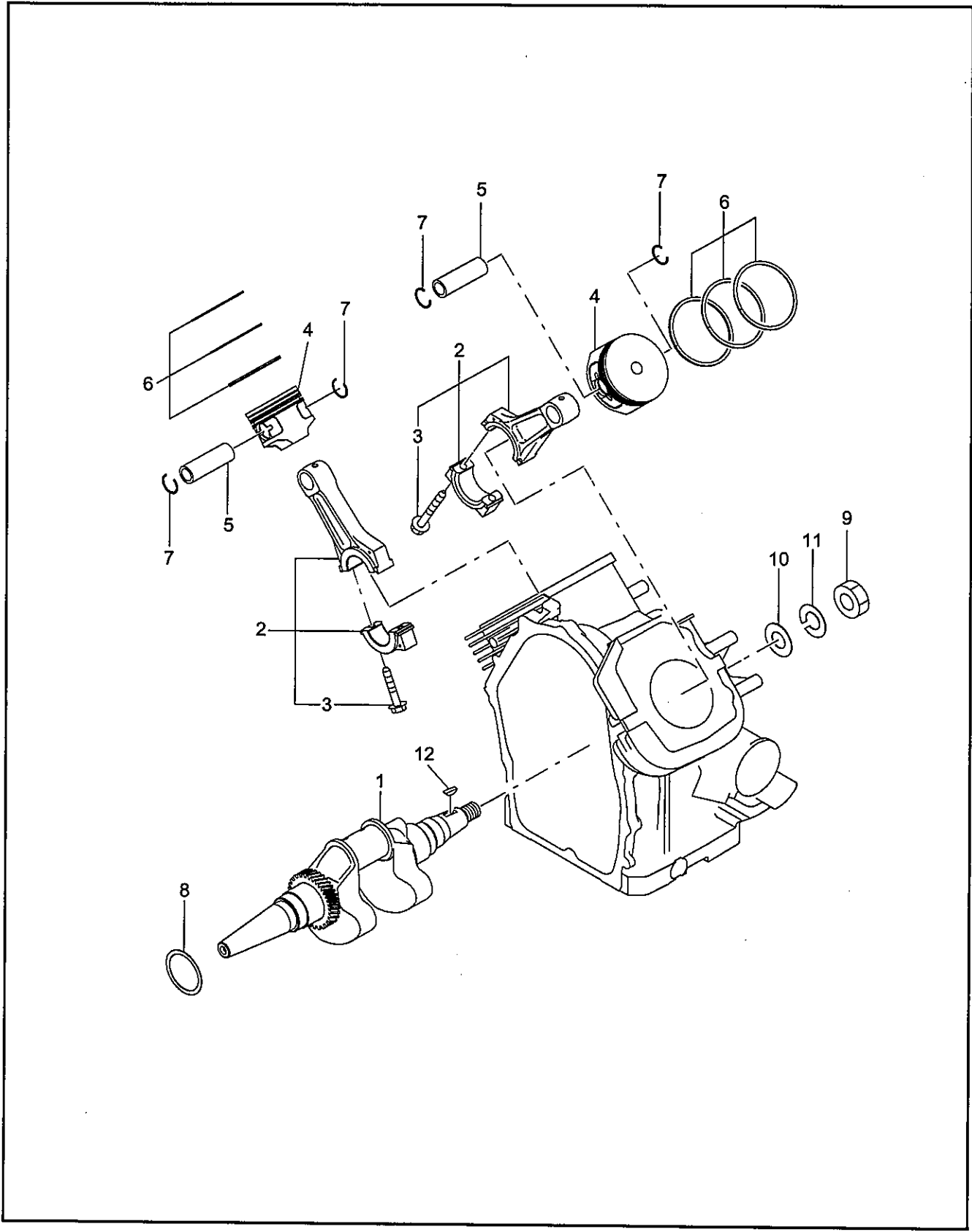


FIG.9-1 GOVERNOR GROUP

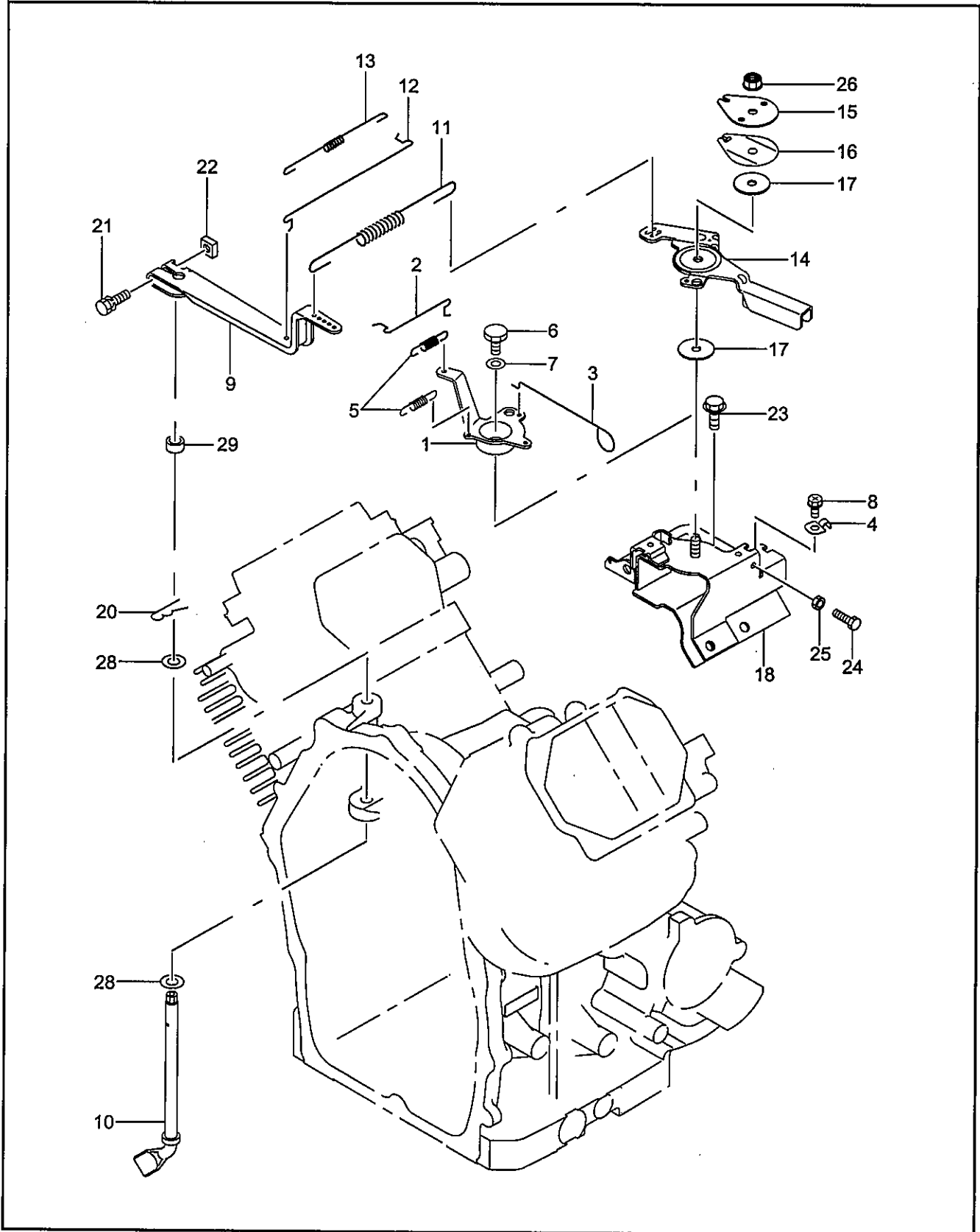


FIG.9-2 GOVERNOR GROUP (REMOTE CONTROL TYPE)

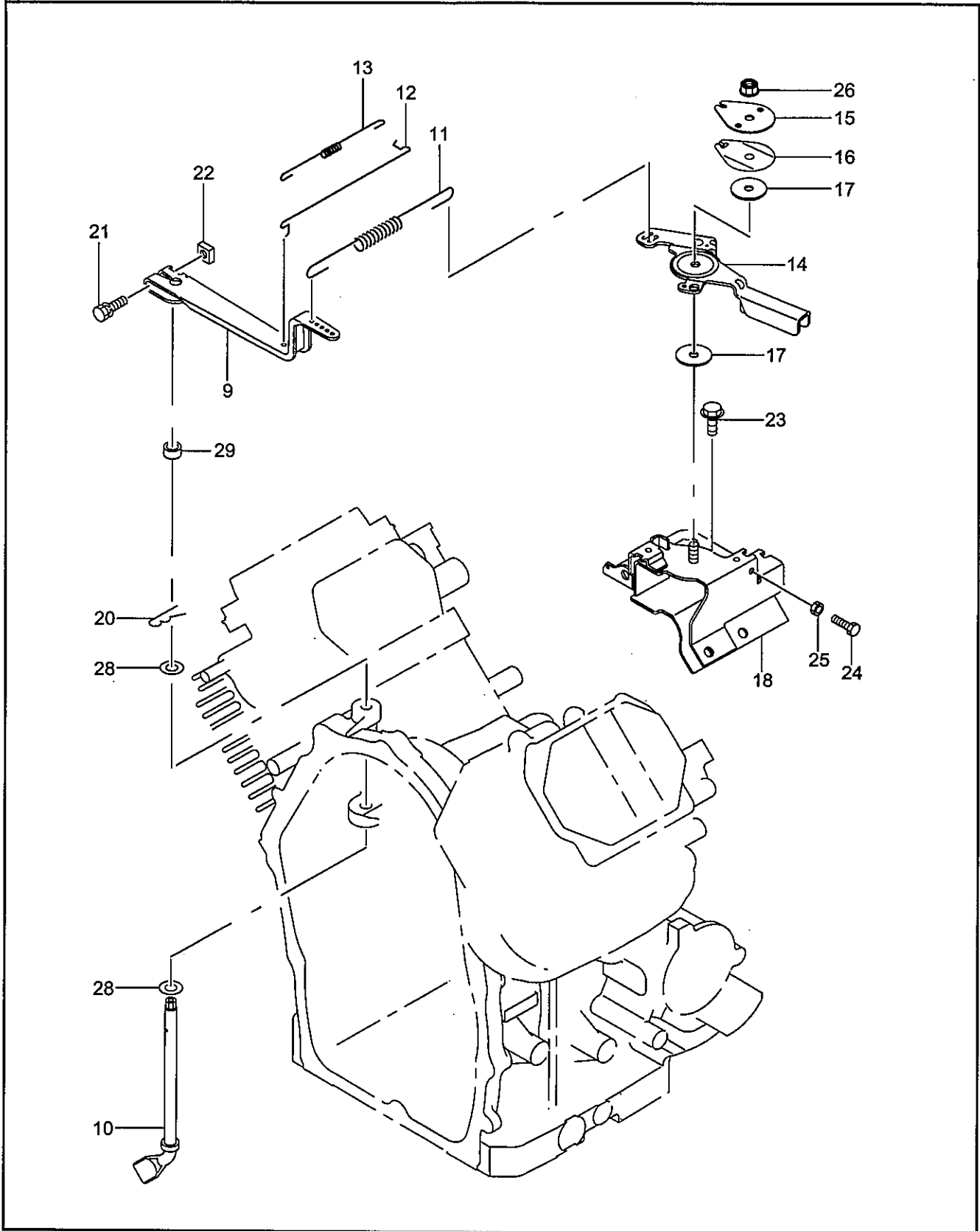


FIG.10 COOLING and STARTING GROUP

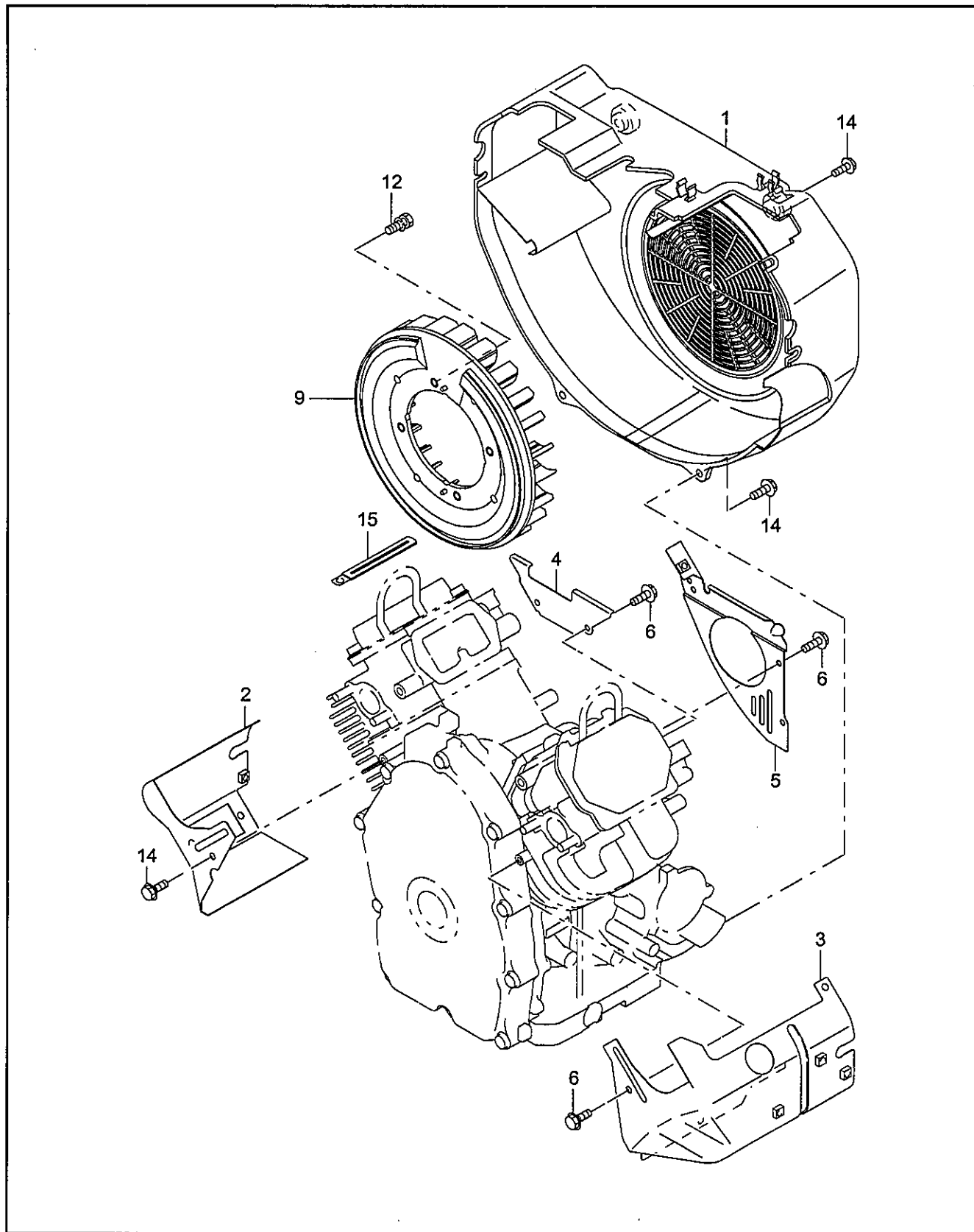


FIG.11 FUEL, LUBRICANT GROUP

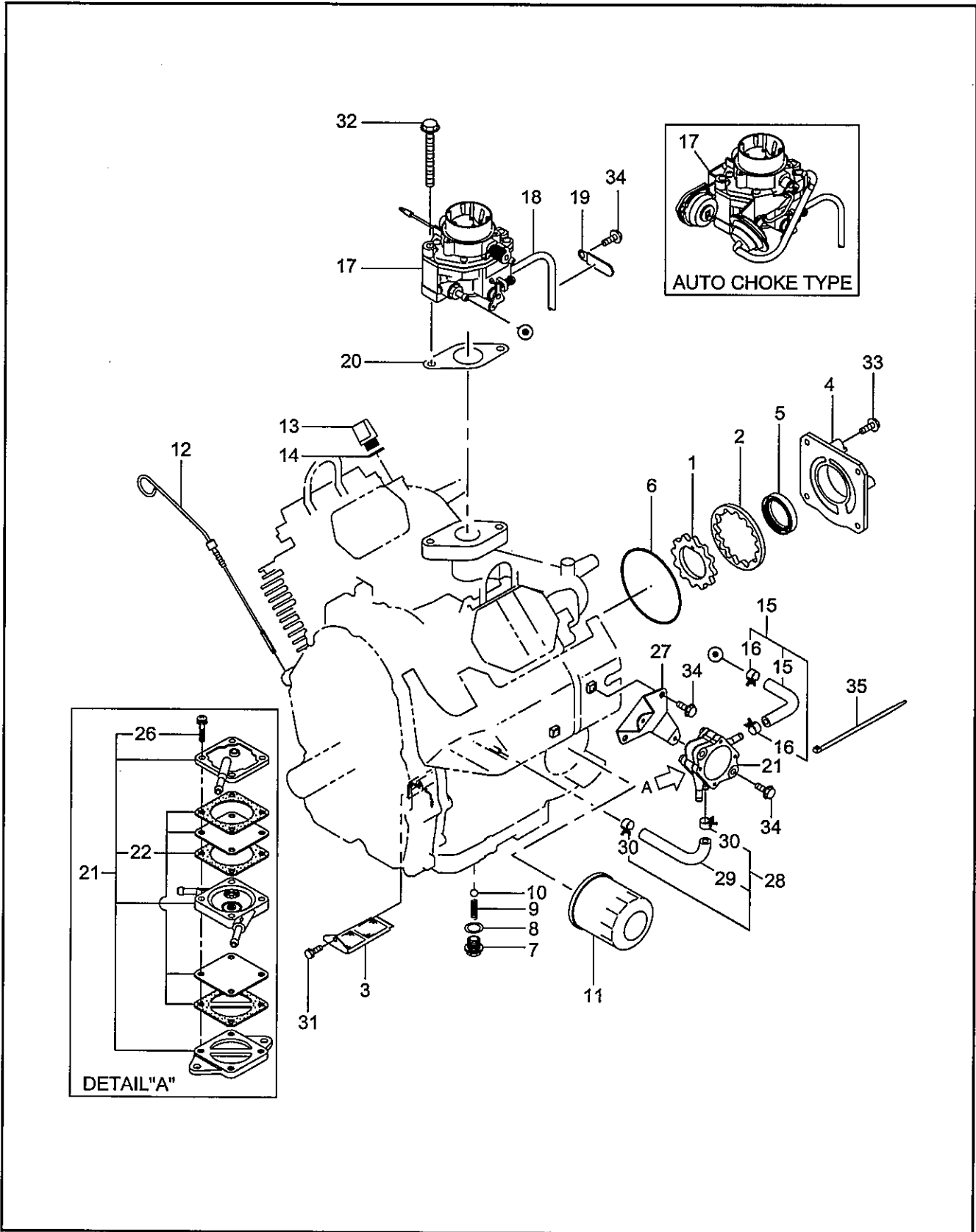


FIG.12-1 CARBURETOR GROUP

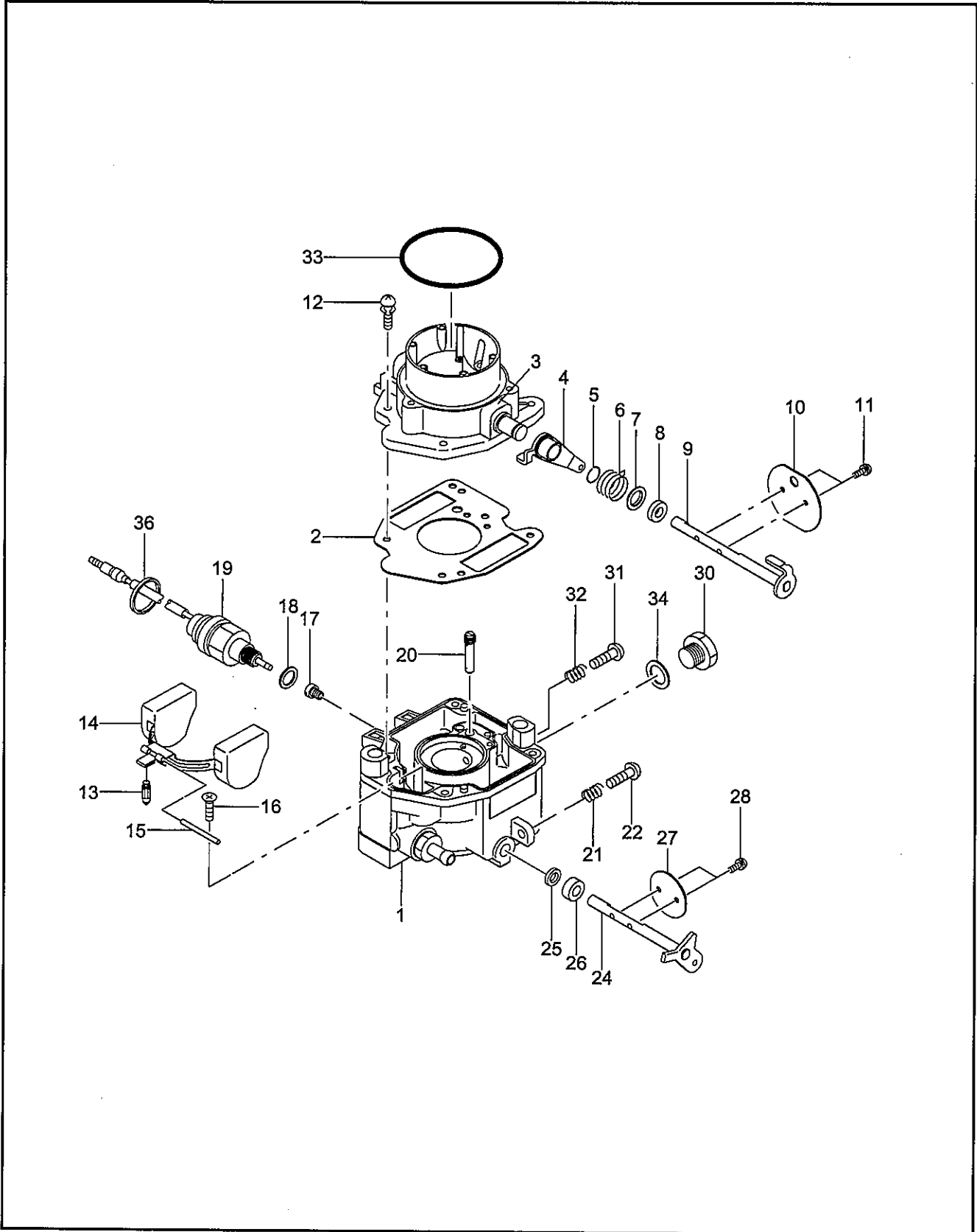


FIG.12-2 CARBURETOR GROUP(AUTO CHOKE TYPE)

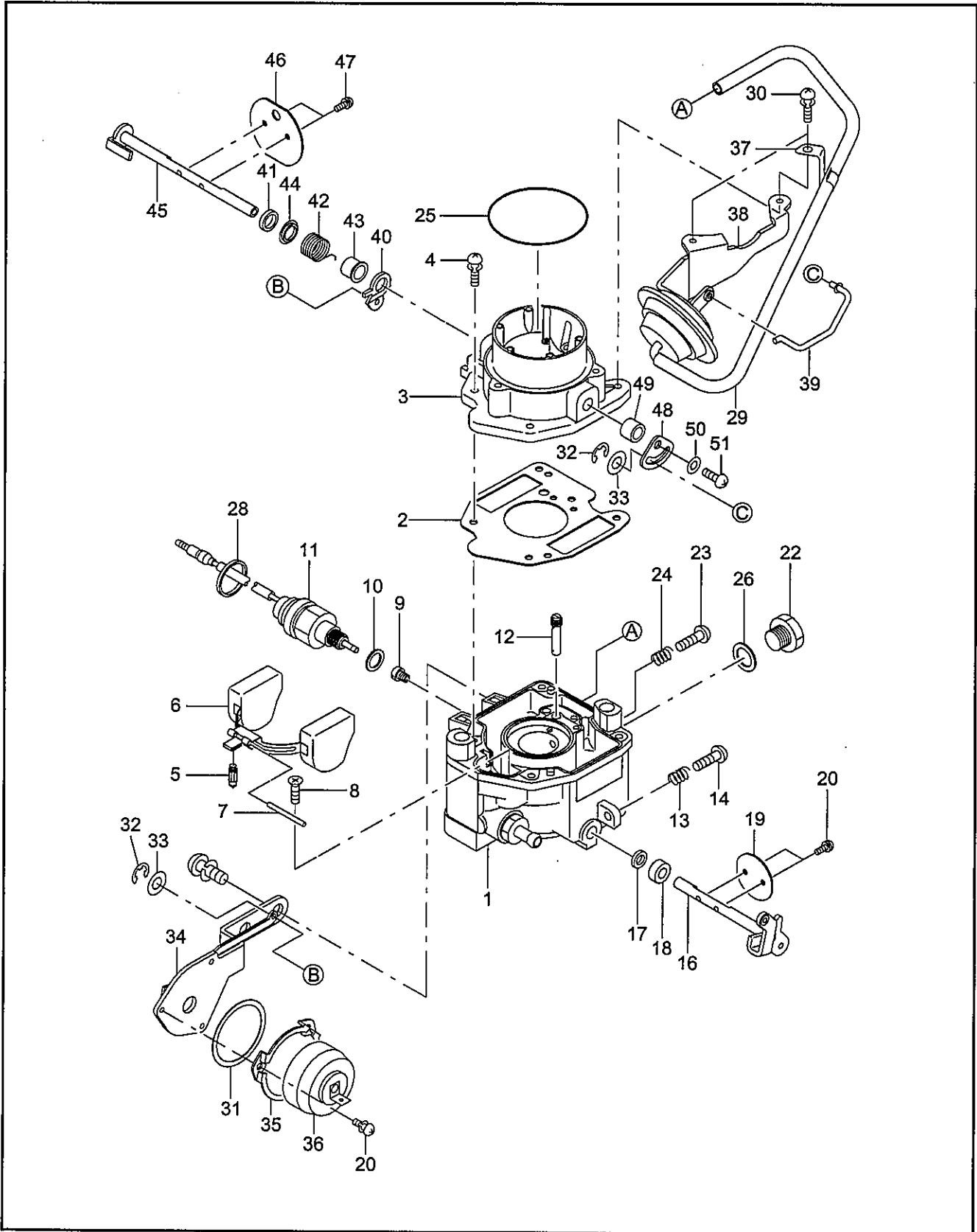


FIG.12-2 CARBURETOR GROUP (AUTO CHOKE TYPE)

Interchangeability

Ref. No.	Part Number	Description	Q'ty	Execution
*1	263-62312-00	CARBURETOR ASS'Y Includes items 2 thru 51	1	
2	258-62545-08	GASKET, air horn	1	
4	258-62450-08	SCREW, air horn set	2	
5	226-62501-08	VALVE, float	1	
6	258-62505-08	FLOAT ASS'Y	1	
7	258-62515-08	FLOAT PIN	1	
8	258-62556-08	SCREW, float pin set	1	
9	263-62400-08	MAIN JET (#132)	1	
10	258-62546-08	GASKET	1	
11	258-62557-18	SOLENOID VALVE ASS'Y	1	
12	258-62420-08	JET, slow (#60)	1	
13	258-62445-08	SPRING, adjust screw	1	
14	258-62451-08	SCREW, throttle adjust	1	
16	263-62534-08	THROTTLE SHAFT ASS'Y	1	
17	226-62580-08	FILTER, throttle shaft	1	
18	258-62570-08	COLLAR, throttle shaft	1	
19	263-62535-08	THROTTLE VALVE	1	
20	261-62352-08	SCREW, valve set	5	
22	263-62551-08	PLUG	1	
23	215-62353-08	SCREW, drain	1	
24	215-62446-08	SPRING, drain	1	
25	263-62560-08	O RING, air horn	1	
26	263-62555-08	GASKET	1	
28	258-62566-08	CLAMP, solenoid wire	1	
29	263-62567-08	RUBBER PIPE	1	
30	263-62589-08	SCREW, holder set	2	
31	107-62373-08	GASKET	1	
32	263-62596-08	WASHER	2	
33	107-62377-08	E-CLIP	2	
34	263-62562-08	HOLDER, compl.	1	
35	107-62375-08	PLATE	1	
36	107-62376-08	COVER ASS'Y, thermostat	1	
37	263-62568-08	HOLDER, vacuum hose	1	
38	263-62352-08	OPENER ASS'Y, choke	1	
39	263-62353-08	ROD, choke piston	1	
40	263-62527-08	LEVER ASS'Y, choke	1	
41	258-62551-08	RING, choke lever	1	
42	263-62447-08	SPRING, choke	1	
43	258-62553-08	COLLAR, choke	1	
44	258-62554-08	FILTER, choke shaft	1	
45	263-62523-08	SHAFT ASS'Y, choke	1	
46	258-62525-08	CHOKE VALVE	1	
47	258-62555-08	SCREW, valve set	2	
48	263-62506-08	ARM, choke	1	

FIG.12-2 CARBURETOR GROUP(AUTO CHOKE TYPE)

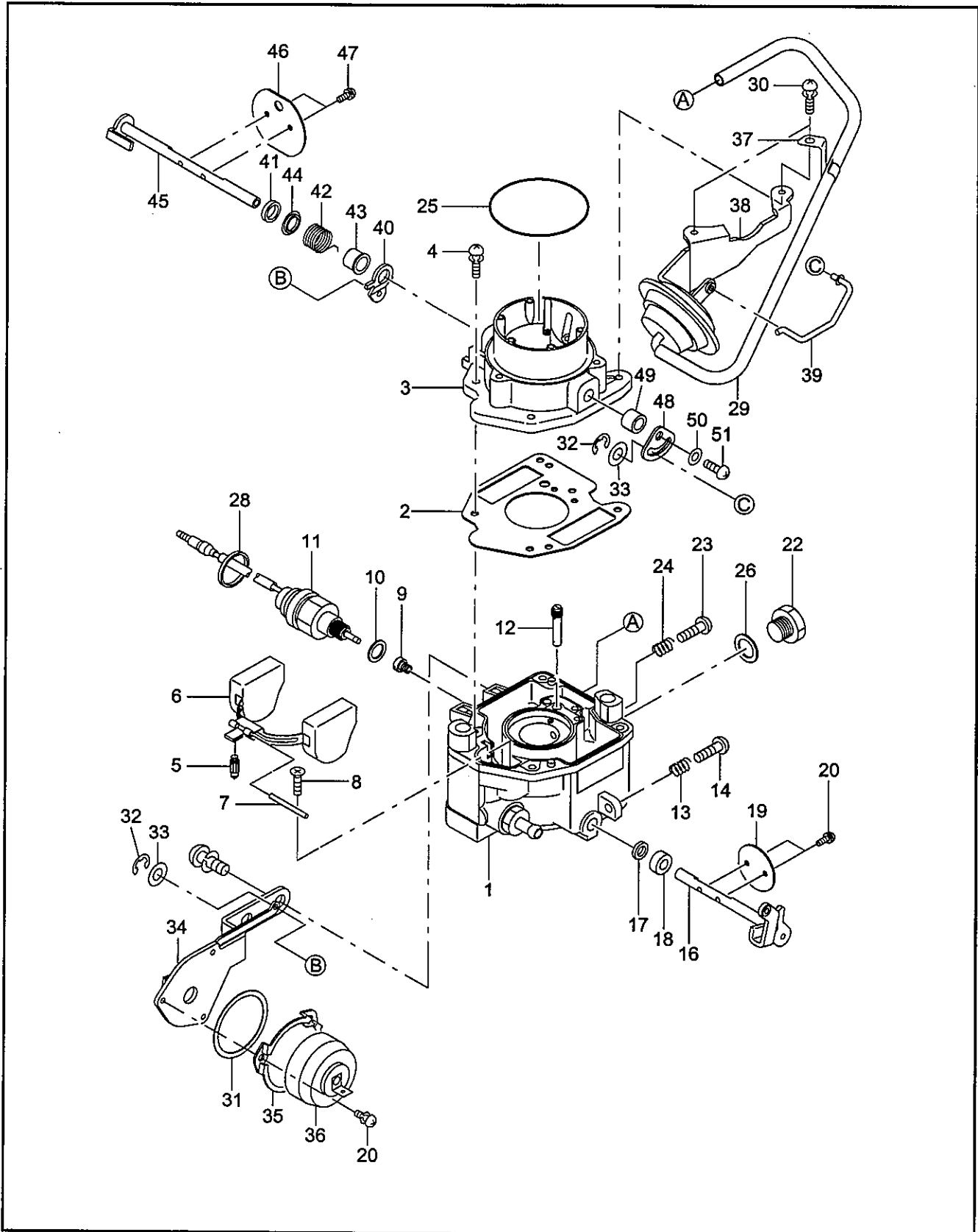


FIG.13 ELECTRIC DEVICE GROUP

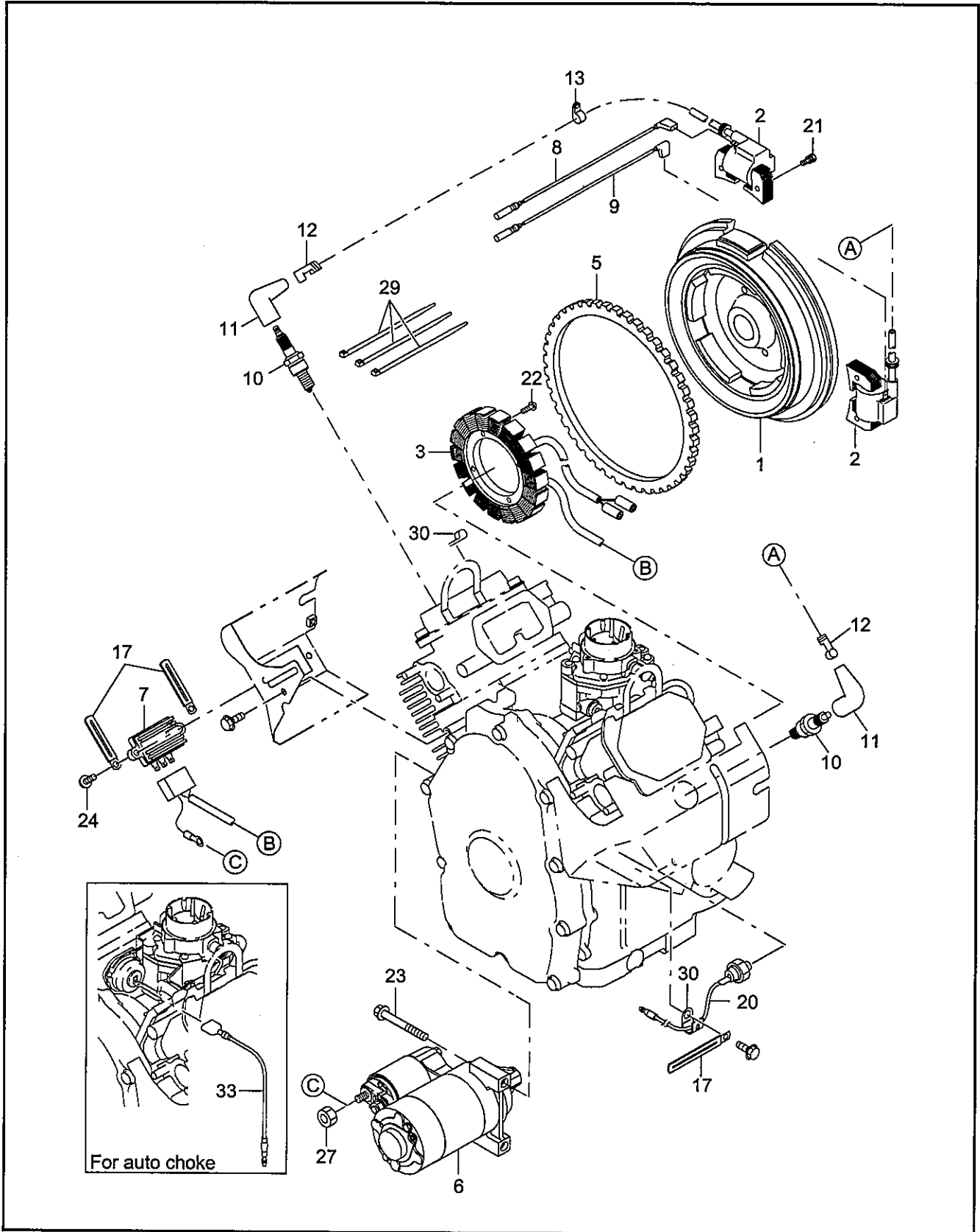


FIG.14 STARTING MOTOR GROUP

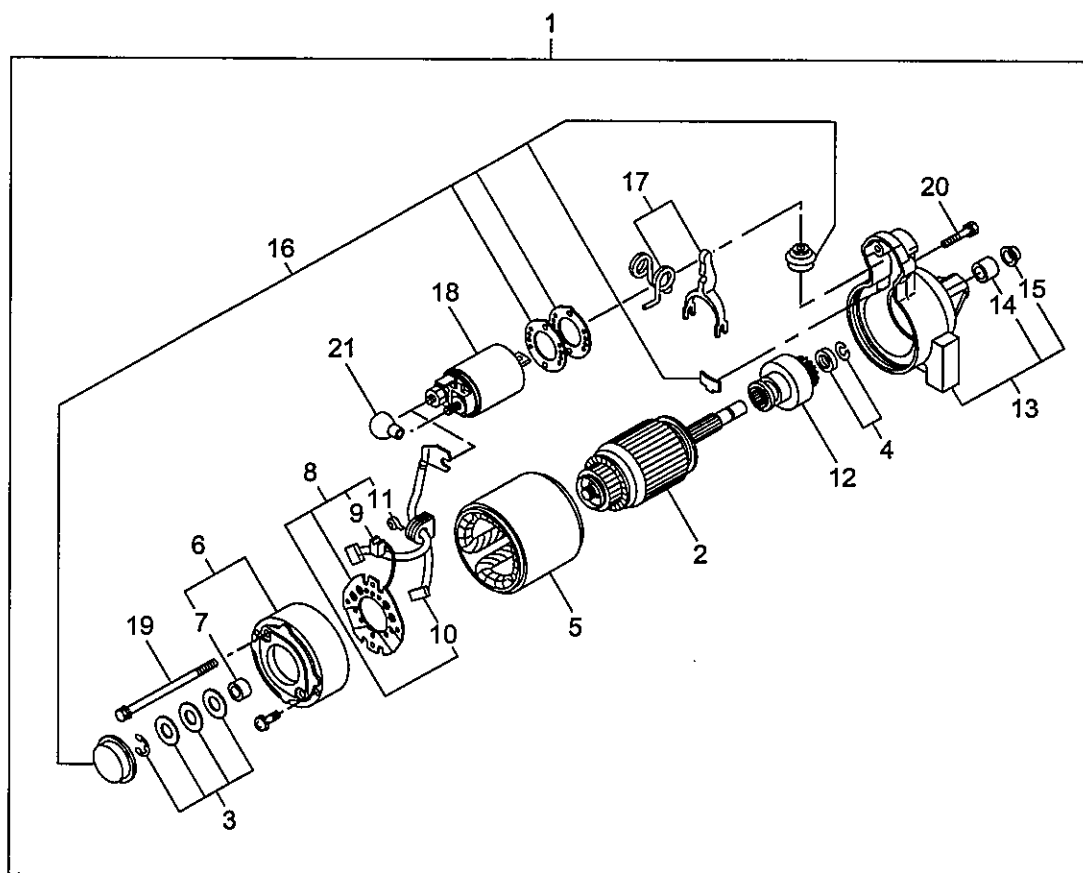


FIG.15 ACCESSORIES GROUP

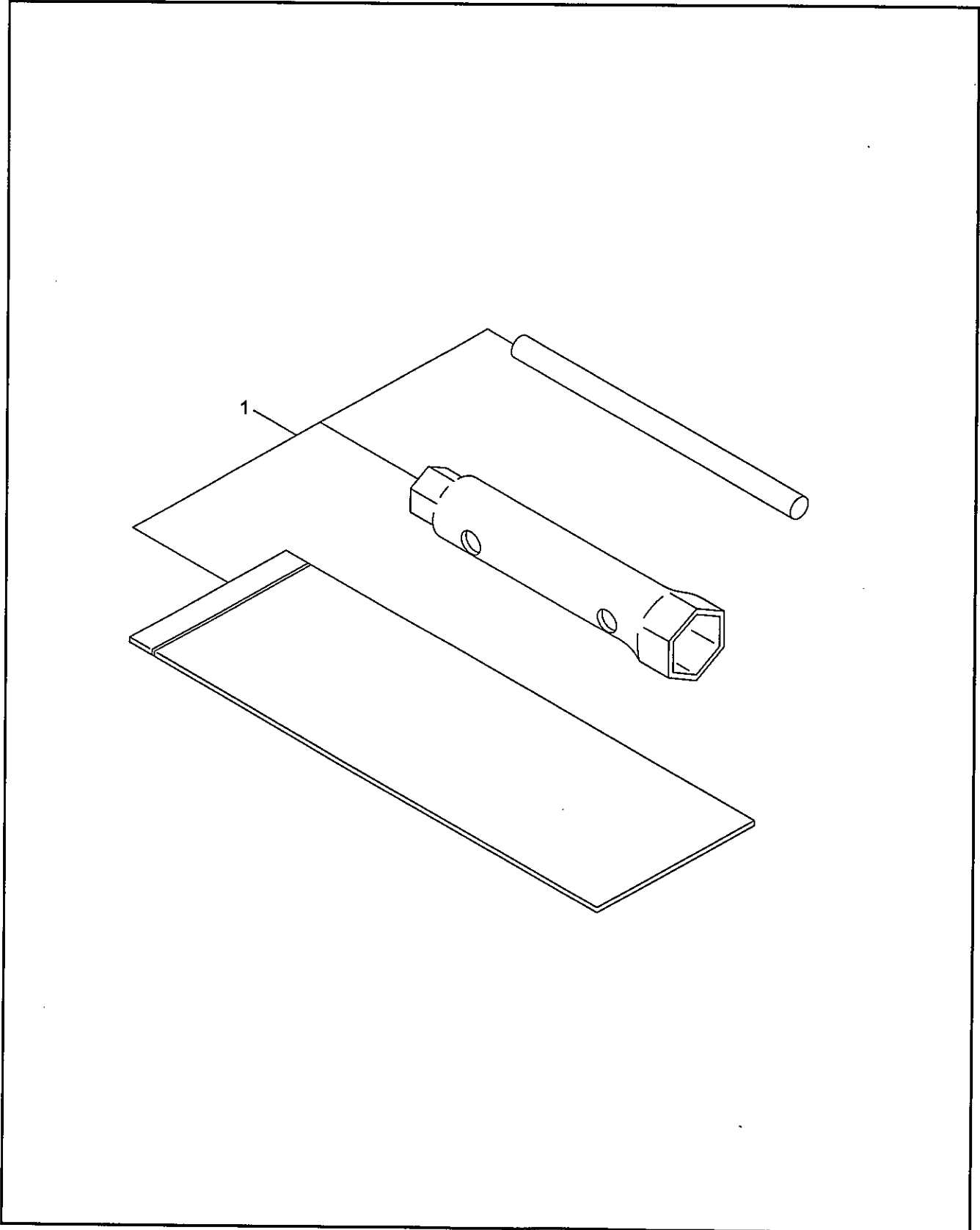


FIG.16 REMOTE CONTROL BOX
(Remote control type)

