



# PARTS CATALOG

# Robin

## Generator

Model

# ***RGV13100T***

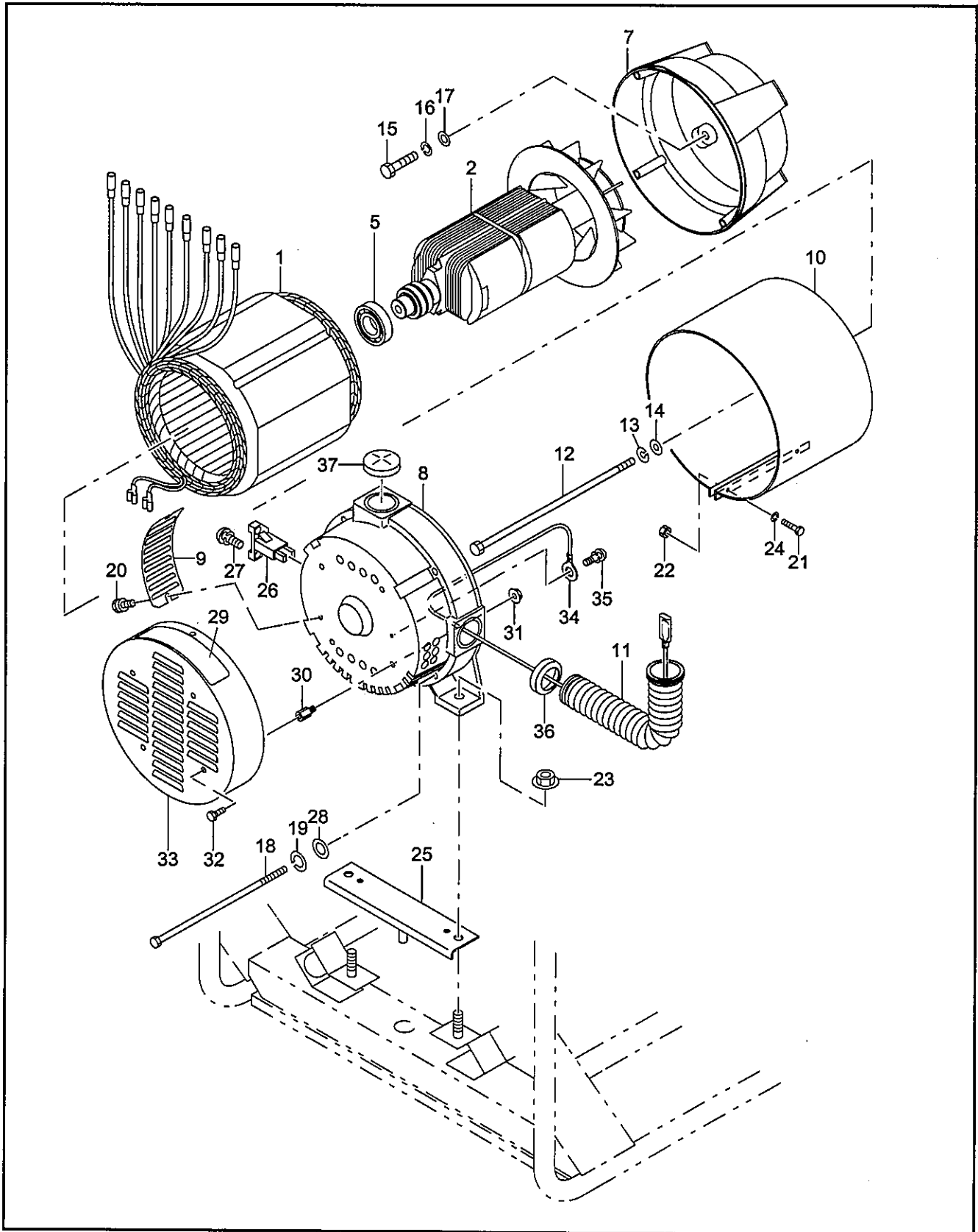
 **FUJI HEAVY INDUSTRIES LTD.**

ISSUE EMD-GP1560





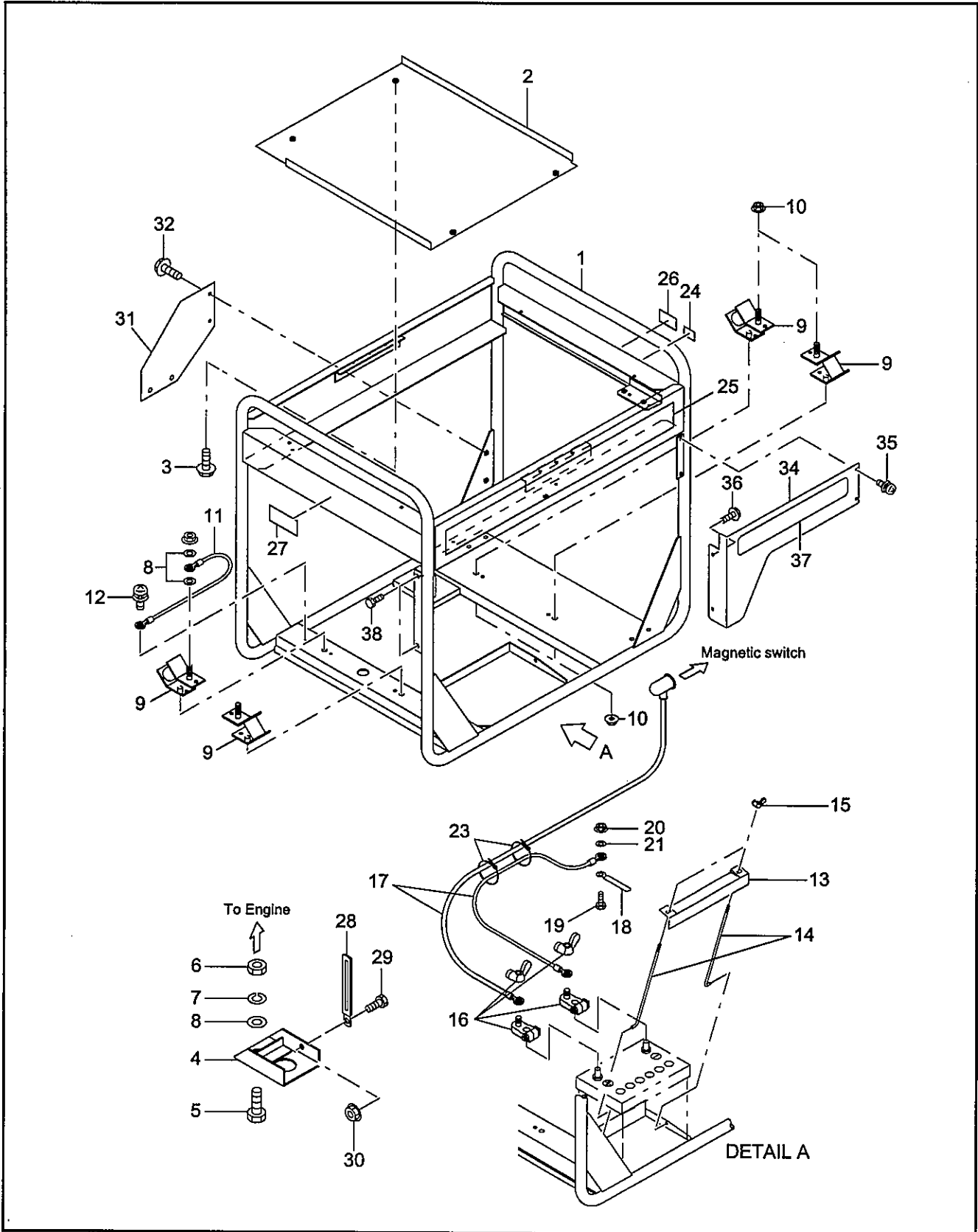
**FIG.1 GENERATOR GROUP**



# FIG.1 GENERATOR GROUP

					Interchangeability
Ref. No.	Part Number	Description		Q'ty	Execution
1	31F-52023-01	STATOR, compl.	For 50Hz-240V/415V	1	
1	31F-52022-01	STATOR, compl.	For 60Hz-127V/220V	1	
1	31F-52017-01	STATOR, compl.	For 50Hz-230V/400V	1	
*2	31F-52018-01	ROTOR, compl.	Includes item 5	1	
5	392-58209-08	BEARING		1	
7	31F-53001-03	FRONT BRACKET		1	
8	31F-53016-01	REAR COVER		1	
9	31F-54004-01	BRUSH COVER		1	
10	31F-54003-01	STATOR COVER		1	
11	353-57506-08	BUSHING		1	
12	31F-54002-01	THROUGH BOLT (5/16-24×265mm)		1	
13	003-20080-00	SPRING WASHER		1	
14	003-10080-00	WASHER		1	
15	31F-54001-01	BOLT (3/8-16×25mm)		4	
16	003-20100-00	SPRING WASHER		4	
17	003-10100-00	WASHER		4	
18	365-58006-08	COVER BOLT (M8×220mm)		4	
19	003-20080-00	SPRING WASHER		4	
20	356-59953-08	BOLT and WASHER ASS'Y (M5×12mm)		2	
21	31F-54005-01	BOLT (M4×18mm)		2	
22	002-17040-00	NUT(M4)		2	
23	002-38100-00	FLANGE NUT (M10)		2	
24	003-20040-00	SPRING WASHER		2	
25	31F-61002-01	GENERATOR BASE		1	
26	31G-74001-01	BRUSH HOLDER, compl.		1	
27	31G-62001-01	SCREW and WASHER ASS'Y (M5×20mm)		2	
28	003-10080-00	WASHER		4	
29	31F-81028-03	LABEL(SPEC)	For 50Hz-240V/415V	1	
29	31F-81027-03	LABEL(SPEC)	For 60Hz-127V/220V	1	
29	31F-81026-03	LABEL(SPEC)	For 50Hz-230V/400V CE	1	
30	391-25600-03	BOLT		4	
31	002-38060-00	FLANGE NUT (M6)		4	
32	011-00600-80	FLANGE BOLT		4	
33	31F-54016-01	END COVER		1	
34	31F-62017-01	EARTH WIRE		1	
35	392-49986-08	SCREW and WASHER (M4×6mm)		1	
36	354-54525-08	CAP		1	
37	354-54514-08	CAP		1	

**FIG.2 PIPE FRAME GROUP**

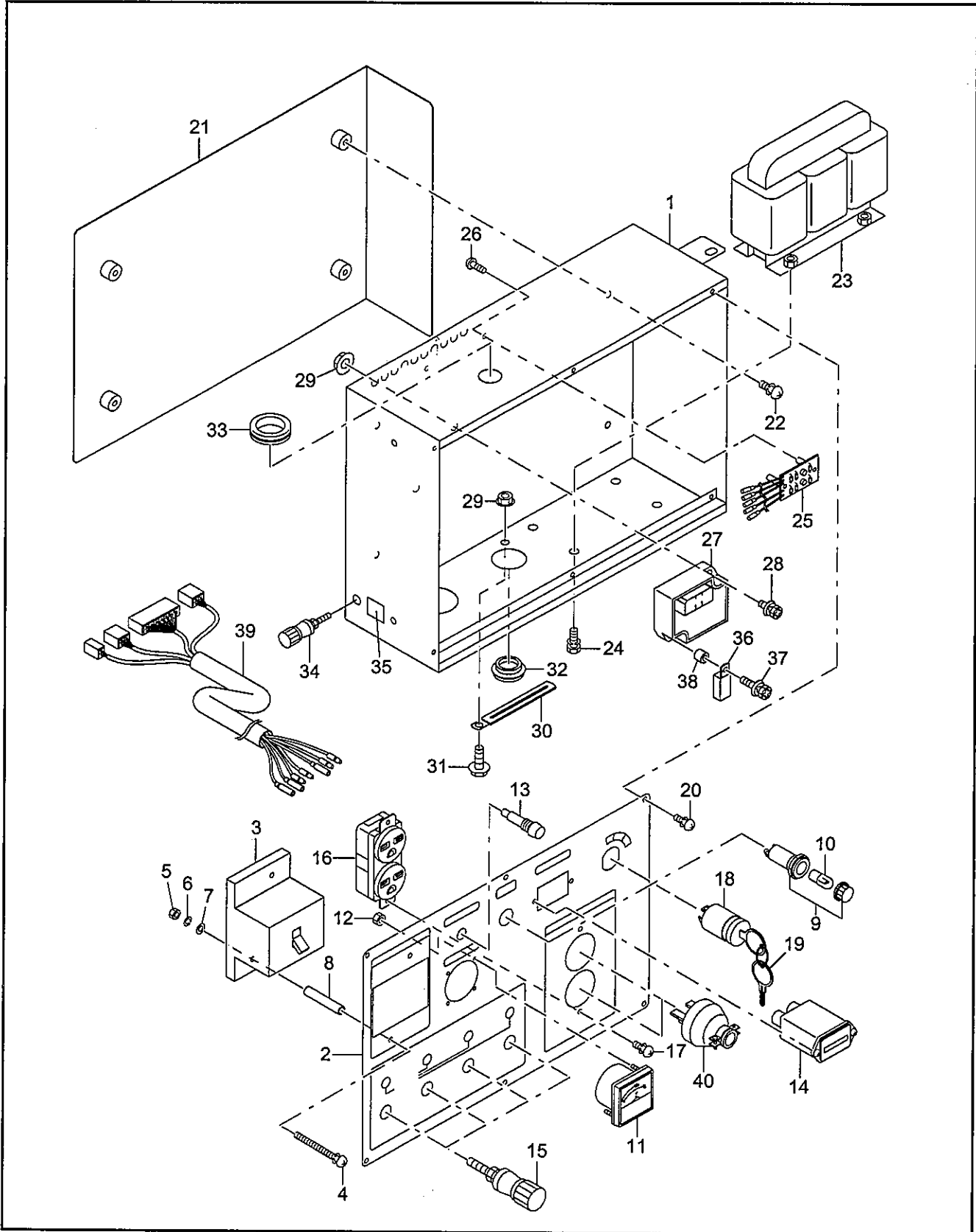


### FIG.2 PIPE FRAME GROUP

Interchangeability

Ref. No.	Part Number	Description	Q'ty		Execution
1	31G-61005-01	PIPE FRAME, compl.	1		
2	31F-61024-01	BAFFLE PLATE	1		
3	011-00600-20	FLANGE BOLT (M6×12mm)	4		
4	31F-61022-01	STOPPER PLATE	1		
5	001-66104-00	BOLT (M10×40mm)	1		
6	002-17100-00	NUT	1		
7	003-20100-00	SPRING WASHER	1		
8	003-10100-00	WASHER	3		
9	31F-35002-01	MOUNT, compl.	4	⇩	
9	31F-35001-01	MOUNT, compl.	4		
10	002-38100-00	FLANGE NUT (M10)	6		
11	31F-62016-01	EARTH CORD	1		
12	392-49987-08	SCREW and WASHER ASS'Y (M5×8mm)	1		
13	31F-33001-01	BATTERY STAY, compl.	1		
14	978-21611-20	ROD, battery	2		
15	002-41060-00	WING NUT	2		
16	31F-32001-03	BATTERY TERMINAL	1		
17	31F-74016-11	WIRE CABLE SET	1	⇩	
17	31F-74016-01	WIRE CABLE SET	1		
18	056-60001-70	CLAMP	1		
19	001-66084-50	BOLT (M8×45mm)	1		
20	002-38080-00	FLANGE NUT (M8)	1		
21	003-10080-00	WASHER	1		
23	056-30000-60	WIRE BAND	5		
24	073-20050-80	LABEL (fuel strainer)	1		
25	31F-81051-03	LABEL (Robin)	1		
26	31F-94101-03	LABEL (choke)	1		
27	073-20048-60	LABEL (hot & gas) For CE spec	1		
28	056-60002-50	CLAMP	1		
29	011-00600-20	FLANGE BOLT (M6×12mm)	1		
30	002-38060-00	FLANGE NUT (M6)	1		
31	31G-61024-01	COVER PLATE	1		
32	31G-62002-01	FLANGE BOLT (M8×15mm)	4		
34	31G-61028-01	PLATE, front	1		
35	351-49920-08	SCREW and WASHER (M4×10mm)	2		
36	011-00600-20	FLANGE BOLT (M6×12mm)	2		
37	31F-81025-03	LABEL (RGV13100T)	1		
38	011-00600-80	FLANGE BOLT (M6×12mm)	3		

**FIG.3-1 CONTROL BOX GROUP (50Hz-220V, 240V)**



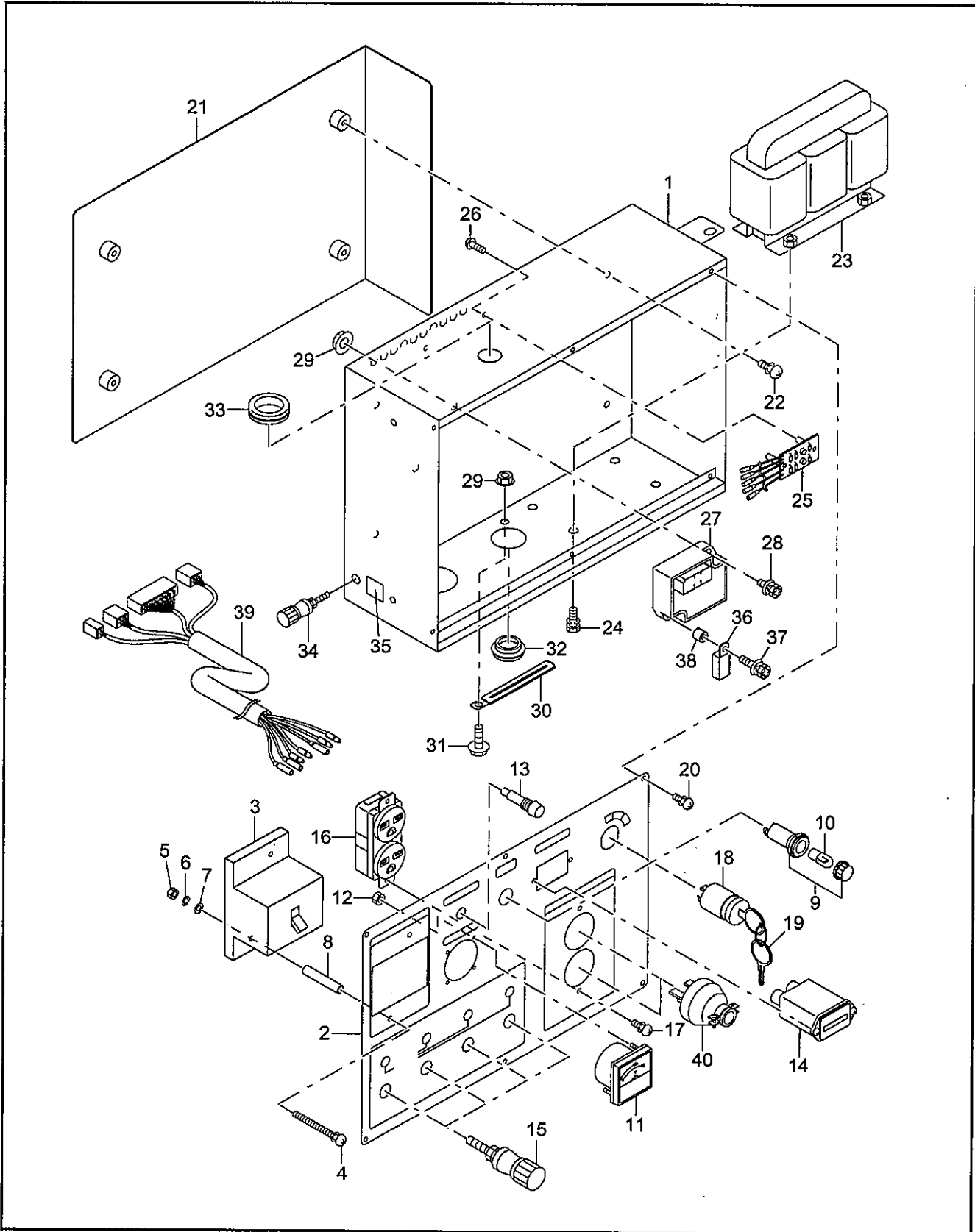


**FIG.3-1 CONTROL BOX GROUP (60Hz-127V/220V)(50Hz-240V/415V)**

Interchangeability

Ref. No.	Part Number	Description	Q'ty	Execution
*1	31F-71033-10	CONTROL BOX ASS'Y For 60Hz-127V/220V Includes items 1 thru 39	1	
*1	31F-71033-00	CONTROL BOX ASS'Y For 60Hz-127V/220V Includes items 1 thru 39	1	
*1	31F-71036-00	CONTROL BOX ASS'Y For 50Hz-240V/415V Includes items 1 thru 39	1	
1	31F-73023-01	CONTROL BOX UNIT	1	
*2	31F-72034-00	CONTROL PANEL ASS'Y For 60Hz-127V/220V Includes items 2 thru 19	1	
*2	31F-72037-00	CONTROL PANEL ASS'Y For 50Hz-240V/415V Includes items 2 thru 19	1	
2	31F-73042-01	CONTROL PANEL For 60Hz-127V/220V	1	
2	31F-73045-01	CONTROL PANEL For 50Hz-240V/415V	1	
3	31F-75027-03	NO FUSE BREAKER (24A) For 60Hz-127V/220V	1	
3	31F-75028-03	NO FUSE BREAKER (12A) For 50Hz-240V/415V	1	
4	31F-76004-01	SCREW (M4×60mm)	2	
5	002-17040-00	NUT	2	
6	003-20040-00	SPRING WASHER	2	
7	003-10040-00	WASHER	2	
8	31F-75018-03	SPACER	2	
*9	393-43101-01	LAMP (OIL) Includes item 10	1	
10	393-45006-01	LAMP (18V-0.11A)	1	
11	391-47900-11	VOLTMETER (0~240V) For 60Hz	1	
11	31F-75019-03	VOLTMETER (0~600V) For 50Hz	1	
12	002-17030-00	NUT (M3)	2	
13	320-75118-08	PILOT LAMP	1	
14	393-40651-08	HOUR METER For 60Hz	1	
14	393-40650-08	HOUR METER For 50Hz	1	
15	31F-75017-03	TERMINAL	4	
16	31F-75020-03	AC RECEPTACLE(250V-15A)	1	
17	351-49920-08	SCREW and WASHER ASS'Y (M4×10mm)	2	
*18	066-00003-30	KEY SWITCH Includes item 19	1	
19	066-00099-80	KEY	2	
20	351-49920-08	SCREW and WASHER ASS'Y (M4×10mm)	6	
21	31F-73026-01	PLATE	1	
22	366-49997-08	SCREW and WASHER ASS'Y (M5×10mm)	4	
23	31F-74020-01	CURRENT TRANS For 60Hz	1	
23	31F-74021-01	CURRENT TRANS For 50Hz	1	
24	31F-76003-01	BOLT and WASHER ASS'Y (M6×15mm)	4	
25	31F-74018-01	DIODE UNIT	1	
26	392-49986-08	SCREW and WASHER ASS'Y (M4×6mm)	2	
27	KU3-11062-11	ECU(O/S & R/C),compl.	1	
27	KU3-11062-01	ECU(O/S & R/C),compl.	1	
		next page		

**FIG.3-1 CONTROL BOX GROUP (50Hz-220V, 240V)**

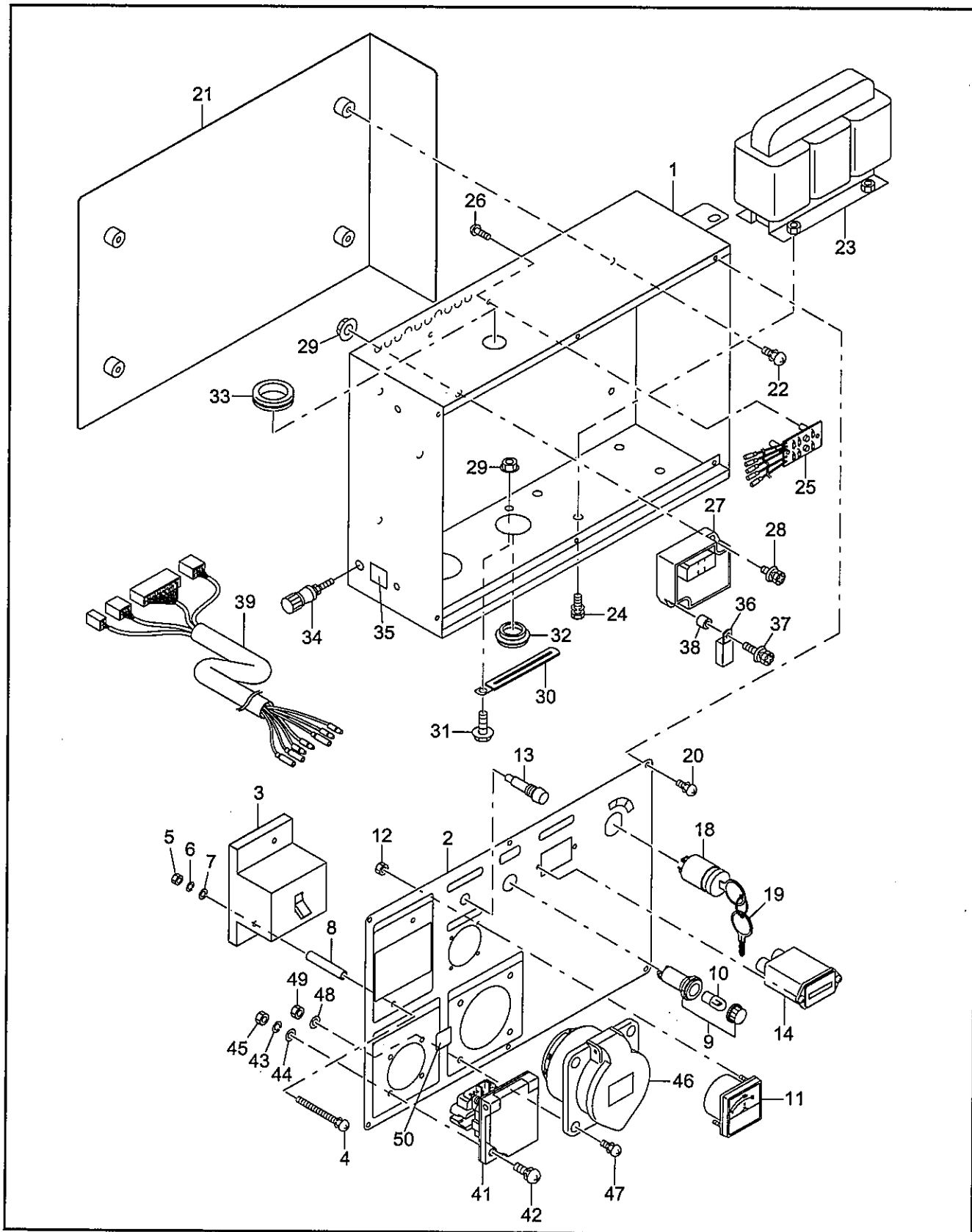


**FIG.3-1 CONTROL BOX GROUP (60Hz-127V/220V)(50Hz-240V/415V)**

Interchangeability

Ref. No.	Part Number	Description	Q'ty	Execution		
28	004-36062-00	SCREW and WASHER ASS'Y (M6×20mm)	1			
28	004-36062-00	SCREW and WASHER ASS'Y (M6×20mm)	2			
29	002-38060-00	FLANGE NUT (M6)	3			
30	056-60002-50	CLAMP	1			
31	011-00600-20	FLANGE BOLT (M6×12mm)	1			
32	31H-75009-03	GROMMET	1			
33	024-11500-10	GROMMET	1			
34	353-45716-08	TERMINAL BOLT	1			
35	30G-49106-08	LABEL, earth	1			
36	391-48301-01	RELAY	1			
37	001-37060-35	SCREW (M6×35mm)	1			
38	023-00603-30	SPACER	1			
39	31G-76012-03	WIRE, compl.	1			
39	31G-76003-03	WIRE, compl.	1			
40	358-95001-03	AC PLUG (250V-15A)	2			

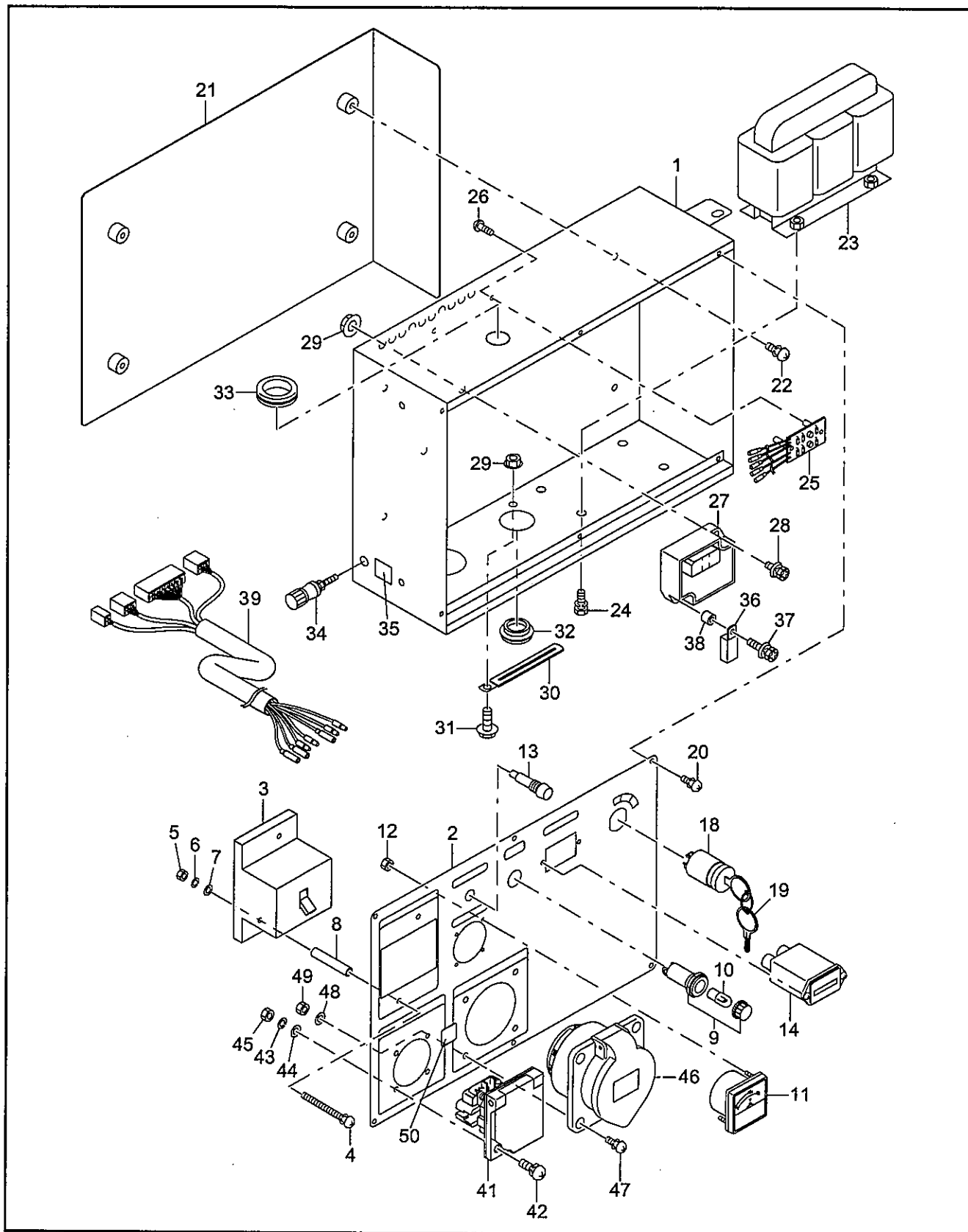
**FIG.3-2 CONTROL BOX GROUP (GERMANY RECEPTACLE)**



**FIG.3-2 CONTROL BOX GROUP (GERMANY RECEPTACLE)**

				Interchangeability	
Ref. No.	Part Number	Description	Q'ty	Execution	
*1	31F-71032-10	CONTROL BOX ASS'Y Includes items 1 thru 14, 18 thru 39, 41 thru 50	1	✕	
*1	31F-71032-00	CONTROL BOX ASS'Y Includes items 1 thru 14, 18 thru 39, 41 thru 50	1		
1	31F-73023-01	CONTROL BOX UNIT	1	↕	
*2	31F-72033-00	CONTROL PANEL ASS'Y Includes items 2 thru 14, 18 and 19	1		
2	31F-73041-01	CONTROL PANEL	1		
3	31F-75028-03	NO FUSE BREAKER (12A)	1		
4	31F-76004-01	SCREW (M4×60mm)	2		
5	002-17040-00	NUT	2		
6	003-20040-00	SPRING WASHER	2		
7	003-10040-00	WASHER	2		
8	31F-75018-03	SPACER	2		
*9	393-43101-01	LAMP (OIL) Includes item 10	1		
10	393-45006-01	LAMP (18V-0.11A)	1		
11	31F-75019-03	VOLTMETER (0~600V)	1		
12	002-17030-00	NUT (M3)	4		
13	320-75118-08	PILOT LAMP	1		
14	393-40650-08	HOUR METER	1		
*18	066-00003-30	KEY SWITCH Includes item 19	1		
19	066-00099-80	KEY	2		
20	351-49920-08	SCREW and WASHER ASS'Y (M4×10mm)	6		
21	31F-73026-01	PLATE	1		
22	366-49997-08	SCREW and WASHER ASS'Y (M5×10mm)	4		
23	31F-74017-01	CURRENT TRANS	1		
24	31F-76003-01	BOLT and WASHER ASS'Y (M6×15mm)	4		
25	31F-74018-01	DIODE UNIT	1		
26	392-49986-08	SCREW and WASHER ASS'Y (M4×6mm)	2		
27	KU3-11062-11	ECU(O/S & R/C),compl.	1		↕
27	KU3-11062-01	ECU(O/S & R/C),compl.	1		
28	004-36062-00	SCREW and WASHER ASS'Y (M6×20mm)	1		
28	004-36062-00	SCREW and WASHER ASS'Y (M6×20mm)	2		
29	002-38060-00	FLANGE NUT (M6)	3		
30	056-60002-50	CLAMP	1		
31	011-00600-20	FLANGE BOLT (M6×12mm)	1		
32	31H-75009-03	GROMMET	1		
33	024-11500-10	GROMMET	1		
34	353-45716-08	TERMINAL BOLT	1		
35	30G-49106-08	LABEL, earth	1		
36	391-48301-01	RELAY	1		
37	001-37060-35	SCREW (M6×35mm)	1		
38	023-00603-30	SPACER	1		

**FIG.3-2 CONTROL BOX GROUP (GERMANY RECEPTACLE)**

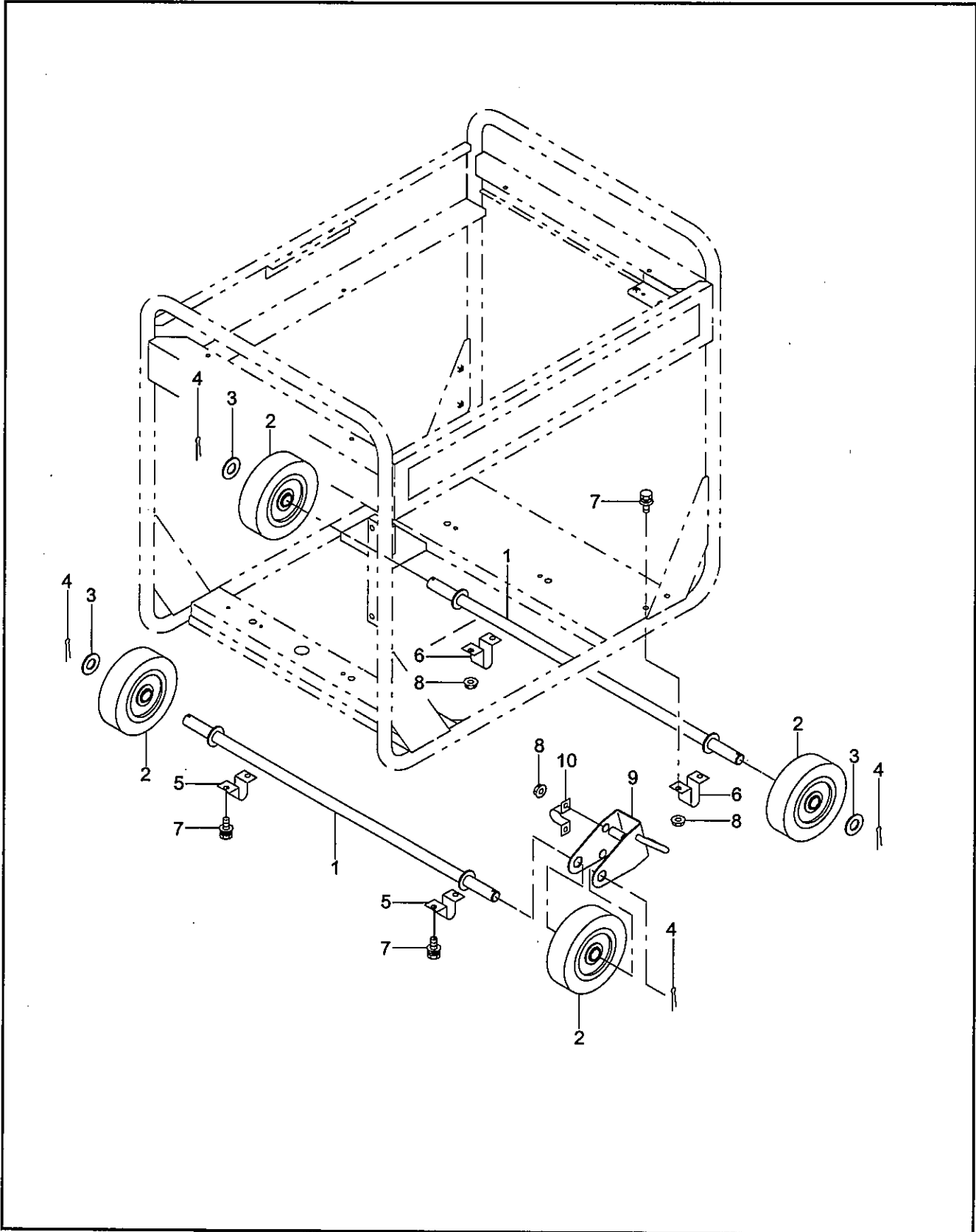


# FIG.3-2 CONTROL BOX GROUP (GERMANY RECEPTACLE)

Interchangeability

Ref. No.	Part Number	Description	Q'ty		Execution
39	31G-76012-03	WIRE, compl.	1	↙*	
39	31G-76003-03	WIRE, compl.	1		
41	388-45746-08	AC RECEPTACLE (250V-16A)	1		
42	004-31031-50	SCREW (M3×15mm)	4		
43	003-20030-00	SPRING WASHER	4		
44	003-10030-00	WASHER	4		
45	002-17030-00	NUT	4		
46	31F-75022-03	AC RECEPTACLE (240V-32A)	1		
47	004-36052-00	SCREW and WASHER ASS'Y (M5×20mm)	4		
48	003-10050-00	WASHER	4		
49	002-17050-00	NUT	4		
50	073-20044-90	LABEL (elec shock)	1		

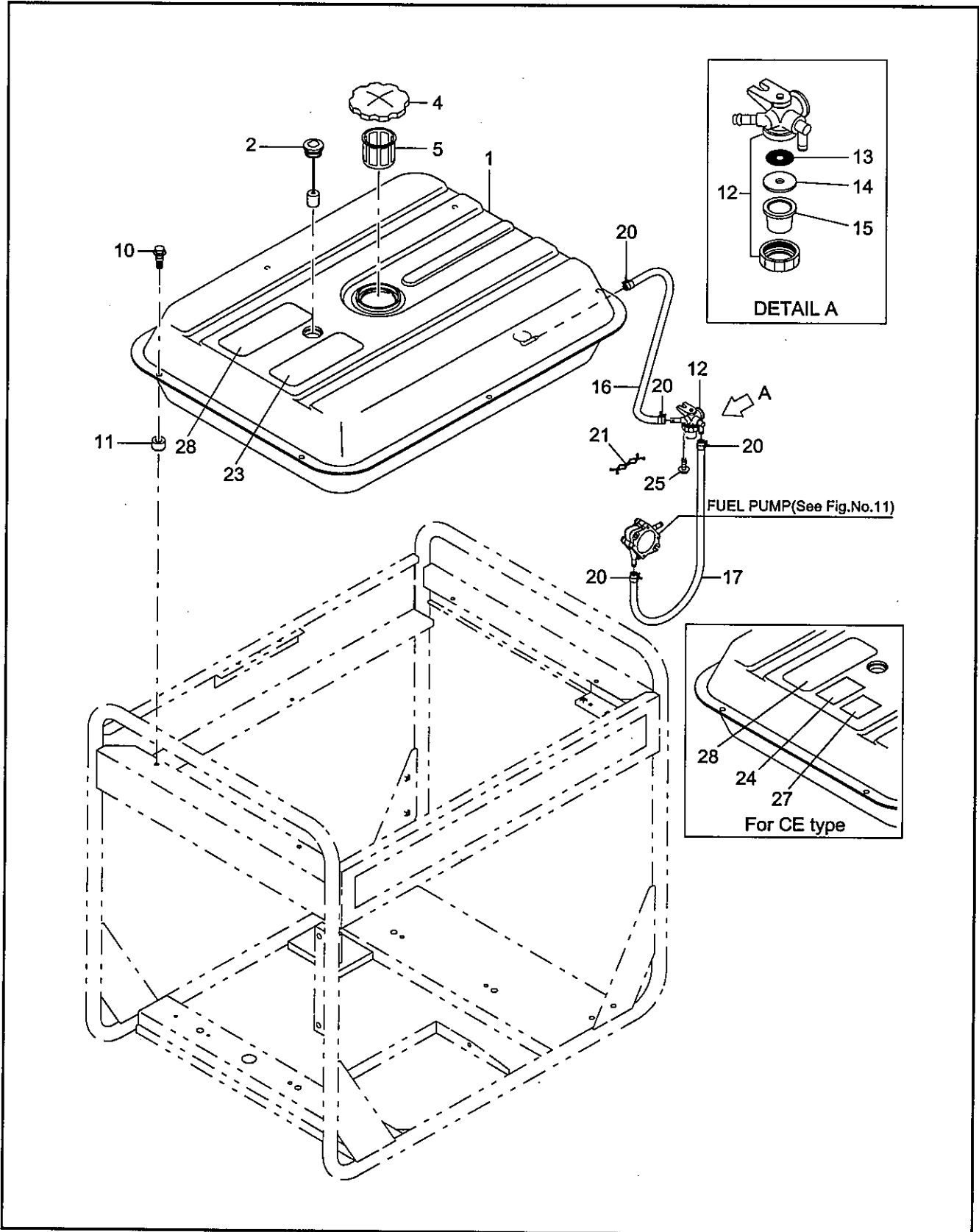
**FIG.4 4-WHEEL KIT GROUP**







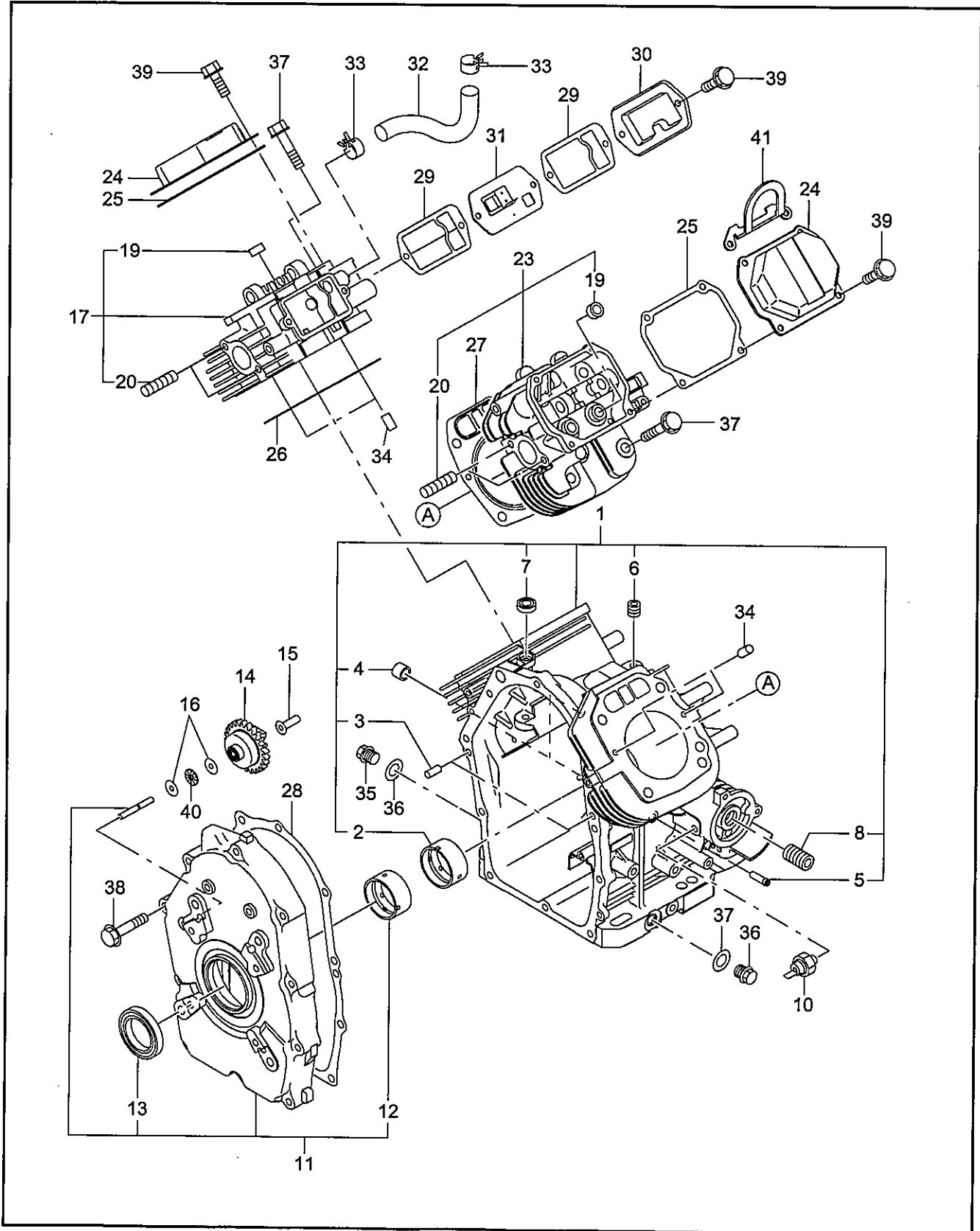
**FIG.5 FUEL TANK GROUP**



**FIG.5 FUEL TANK GROUP**

Ref. No.	Part Number	Description	Q'ty	Interchangeability	
					Execution
1	31G-36101-01	FUEL TANK, compl.	1		
2	064-80015-00	FUEL GAUGE, compl.	1		
4	043-05900-11	FUEL TANK CAP ASS'Y	1		
5	064-15400-11	FUEL FILTER	1		
10	011-00602-20	FLANGE BOLT (M6×20mm)	6		
11	391-39000-13	RUBBER WASHER	6		
*12	064-20036-01	FUEL STRAINER ASS'Y Includes items 13 thru 15	1		
13	064-20002-20	FILTER	1		
14	064-20030-30	PACKING	1		
15	064-20036-10	CUP	1		
16	085-10600-00	RUBBER PIPE (ϕ 6×ϕ 12×120mm)	1		
17	085-10600-00	RUBBER PIPE (ϕ 6×ϕ 12×630mm)	1		
20	056-11100-20	HOSE CLAMP	4		
21	31F-39002-03	PURSE LOCK	1		
23	388-93003-03	LABEL (caution)	1		
24	073-20045-10	LABEL (symbol-tank) For CE spec	1		
25	011-00602-20	FLANGE BOLT (M6×25mm)	1		
27	073-20035-90	LABEL (99) For CE spec	1		
28	31G-81044-03	LABEL (warning)	1		

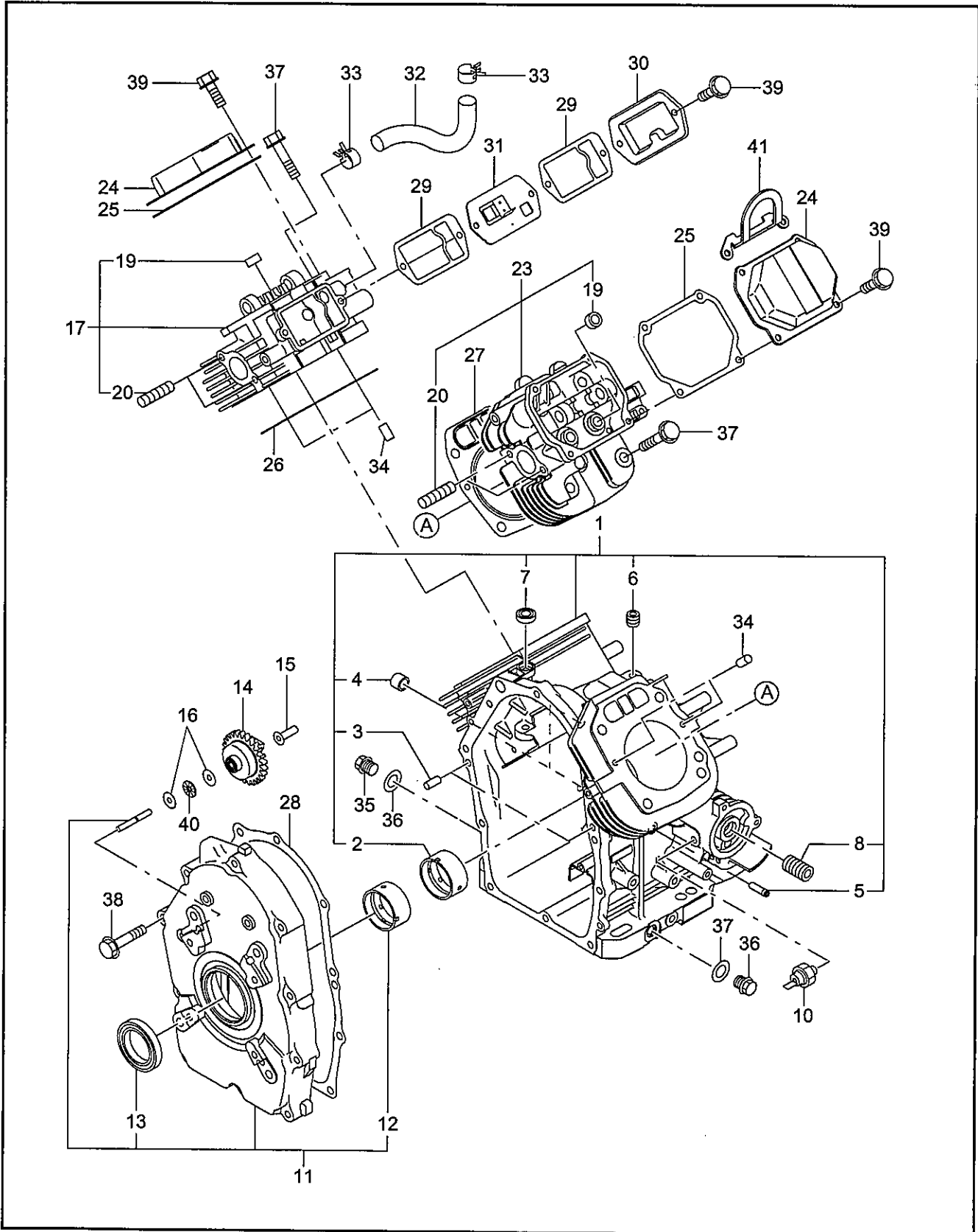
**FIG.6 CRANKCASE GROUP**



**FIG.6 CRANKCASE GROUP**

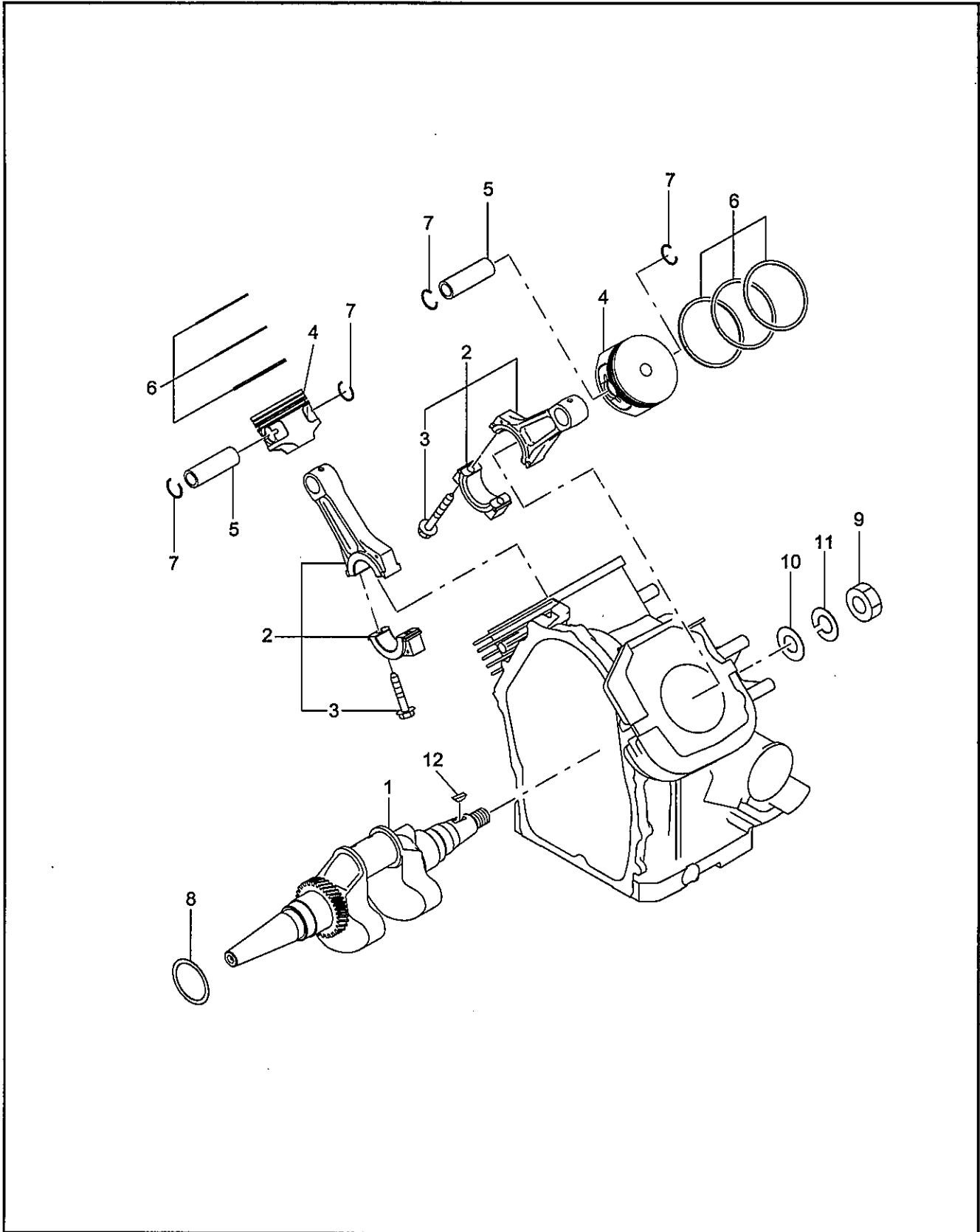
				└ Interchangeability		
Ref. No.	Part Number	Description	Q'ty		Execution	
*1	263-10101-21	CRANKCASE, compl. Includes items 2 thru 8	1	○		
*1	263-10101-11	CRANKCASE, compl. Includes items 2 thru 8	1		○	
*1	263-10101-01	CRANKCASE, compl. Includes items 2 thru 8	1		○	
2	263-15802-03	MAIN BEARING	1	x		
2	263-15801-03	MAIN BEARING	1			
3	005-26081-80	DOWEL PIN	2			
4	142-55601-03	PIPE	2			
5	159-65401-03	PIPE (PULSE)	1			
6	235-15421-03	BLIND PLUG	1			
7	044-00800-10	OIL SEAL	1			
8	263-15901-03	UNION	1			
10	248-76301-01	SWITCH OIL PRESSURE	1			
*11	263-11101-11	MAIN BEARING COVER, compl. Includes items 12 and 13	1		x	
*11	263-11101-01	MAIN BEARING COVER, compl. Includes items 12 and 13	1	x		
12	263-15802-03	MAIN BEARING	1	x		
12	263-15801-03	MAIN BEARING	1			
13	044-04200-30	OIL SEAL	1	○		
13	044-04200-20	OIL SEAL	1			
14	263-45001-A1	GOVERNOR GEAR, compl.	1	○		
14	263-45001-01	GOVERNOR GEAR, compl.	1			
15	263-41901-03	GOVERNOR SLEEVE	1			
16	263-46214-A3	WASHER	2			
*17	263-13001-11	CYLINDER HEAD 1, compl. Includes items 19 and 20	1	○		
*17	263-13001-01	CYLINDER HEAD 1, compl. Includes items 19 and 20	1			
19	132-07AA0-50	SEAL-INTAKE VALVE	2			
20	010-50802-90	STUD	8			
*23	263-13101-11	CYLINDER HEAD 2, compl. Includes items 19 and 20	1	○		
*23	263-13101-01	CYLINDER HEAD 2, compl. Includes items 19 and 20	1			
24	246-15501-01	ROCKER COVER, compl.	2			
25	246-16002-13	GASKET, rocker cover	2			
26	263-15001-13	GASKET 1, cyl. head	1			
27	263-15101-13	GASKET 2, cyl. head	1			
28	263-16001-A3	GASKET, main bearing cover	1	○		
28	263-16001-03	GASKET, main bearing cover	1			
29	263-16006-03	GASKET, breather plate	2			
30	263-14301-03	BREATHER COVER	1			
31	263-14401-01	BREATHER PLATE, compl.	1			
32	263-18001-03	RUBBER PIPE	1			
33	056-11800-20	HOSE CLAMP	2			
34	031-00600-20	DOWEL PIN	4			
35	040-11400-30	PLUG	2			
36	021-11400-20	GASKET	2			

FIG.6 CRANKCASE GROUP





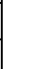
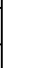
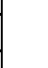


**FIG.7 CRANKSHAFT GROUP**

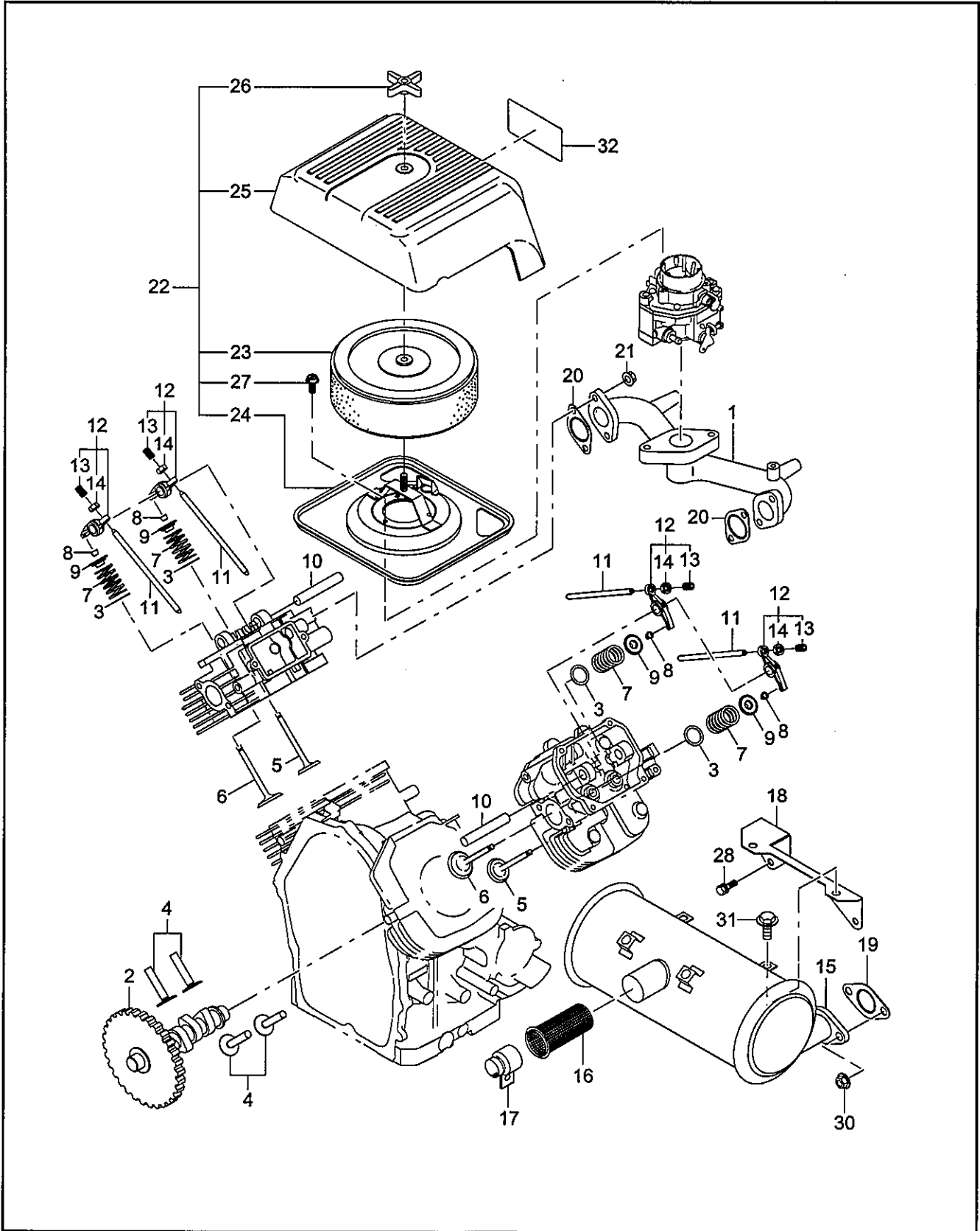




# FIG.7 CRANKSHAFT GROUP

				Interchangeability		
Ref. No.	Part Number	Description	Q'ty		Execution	
1	263-21201-01	CRANKSHAFT, compl.	1			
*2	263-22501-00	CONNECTING ROD ASS'Y Includes item 3	2			
3	246-23001-13	CONNECTING ROD BOLT	2			
3	246-23001-03	CONNECTING ROD BOLT	2			
4	263-23401-03	PISTON (STD)	2			
4	263-23402-03	PISTON (over size 0.25mm)	2			
4	263-23403-03	PISTON (over size 0.50mm)	2			
5	263-23301-03	PISTON PIN	2			
6	263-23501-07	PISTON RING SET (STD)	2			
6	263-23502-07	PISTON RING SET (over size 0.25mm)	2			
6	263-23503-07	PISTON RING SET (over size 0.50mm)	2			
7	056-52100-20	CLIP	4			
8	263-25011-A3	SPACER, t=0.6	1			
8	263-25001-03	SPACER, t=0.6	1			
8	263-25012-A3	SPACER, t=0.8	1			- Select 1 piece only
8	263-25002-03	SPACER, t=0.8	1			
8	263-25013-A3	SPACER, t=1.0	1			
8	263-25003-03	SPACER, t=1.0	1			
9	002-18180-00	NUT	1			
10	003-10180-00	WASHER	1			
11	003-20180-00	SPRING WASHER	1			
12	005-32054-01	WOODRUFF KEY	1			

**FIG.8 INTAKE and EXHAUST GROUP**

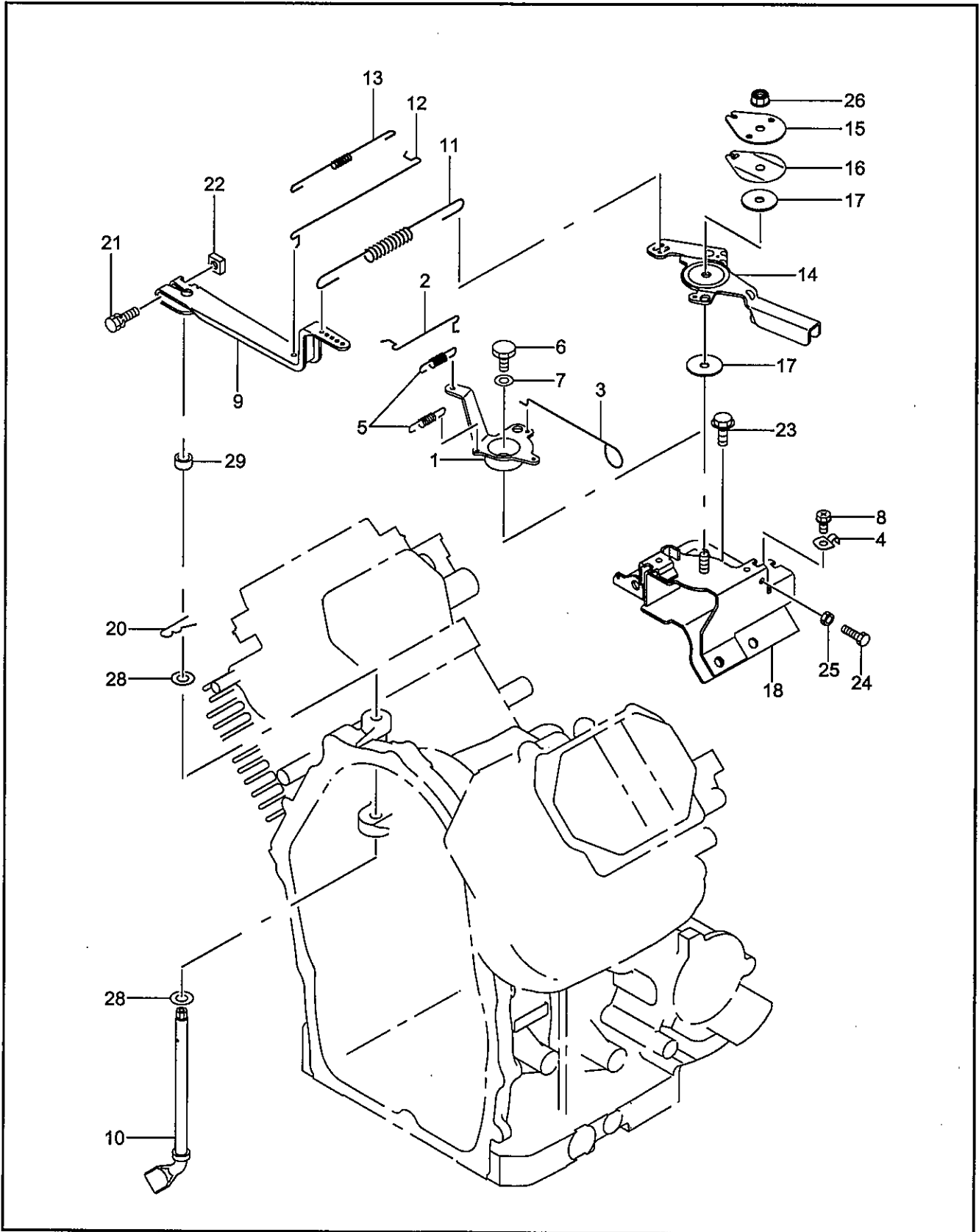


**FIG.8 INTAKE and EXHAUST GROUP**

Interchangeability


Ref. No.	Part Number	Description	Q'ty		Execution
1	263-33001-03	INTAKE MANIFOLD	1		
2	263-31701-03	CAMSHAFT	1		
3	020-02000-10	WASHER	4		
4	263-33301-A3	TAPPET	4		
4	246-33301-03	TAPPET	4	↙	
5	263-33401-03	INTAKE VALVE	2		
6	263-33502-03	EXHAUST VALVE	2		
6	267-33501-03	EXHAUST VALVE	2	↙	
7	246-33611-03	VALVE SPRING	4		
8	246-35501-03	COLLET-VALVE	8		
9	246-33711-03	SPRING RETAINER	4		
10	239-35001-03	ROCKER SHAFT	2		
11	263-35311-01	PUSH ROD, compl.	4		
*12	246-36101-10	ROCKER ARM ASS'Y Includes Items 13 and 14	4		
13	014-90800-21	ADJUSTING SCREW (M8×13.4mm)	4		
14	017-00800-90	NUT	4		
15	263-30102-A1	MUFFLER ASS'Y	1		
16	263-37321-A2	SPARK ARRESTER	1		
17	263-37302-A3	CLAMP ASS'Y	1		
18	263-37001-A1	BRACKET MUFFLER	1		
19	263-35201-A1	GASKET EXHAUST	2		
20	263-35503-A3	GASKET, intake manifold	2		
20	246-35201-03	GASKET, muffler	2	↙	
21	002-38080-00	FLANGE NUT	4		
*22	263-32601-00	AIR CLEANER ASS'Y Includes Items 23 thru 26	1		
23	263-32610-A1	CLEANER ELEMENET, compl.	1		
23	263-32610-01	CLEANER ELEMENET, compl.	1	↙	
24	263-32620-01	CLEANER BASE, compl.	1		
25	263-32630-03	CLEANER COVER	1		
26	263-32640-01	WING NUT	1		
27	X10-10500-10	FLANGE BOLT	3		
28	001-14082-00	BOLT and WASHER ASS'Y (M8×20mm)	2		
30	018-00800-10	FLANGE NUT	4		
31	011-00600-30	FLANGE BOLT (M6×14mm)	2		
32	263-91709-03	LABEL (TRADE MAKE)	1		

**FIG.9 GOVERNOR GROUP**

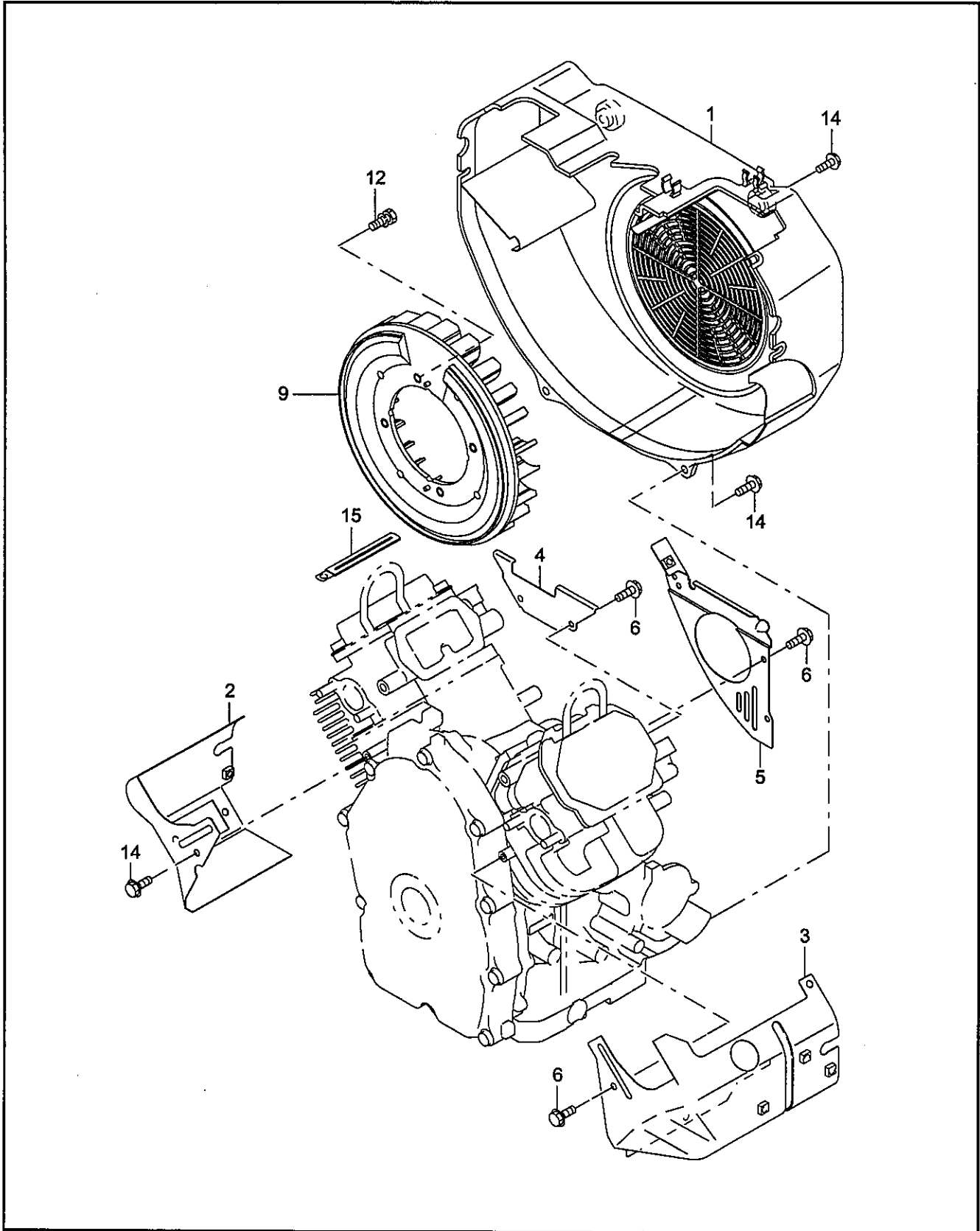


**FIG.9 GOVERNOR GROUP**

└ Interchangeability

Ref. No.	Part Number	Description	Q'ty		Execution
1	263-46001-03	CHOKE CONTROL LINK	1	<div style="text-align: center;">  </div>	
2	263-46011-01	CHOKE CONTROL ROD	1		
3	263-43901-01	CHOKE KNOB	1		
4	263-46010-03	CLAMP, choke knob	1		
5	261-45201-03	RETURN SPRING	2		
6	261-43101-01	LINK PIVOT	1		
7	003-22100-00	WAVED WASHER	1		
8	015-20500-10	TAPPING SCREW	1		
9	263-42301-A3	GOVERNOR LEVER	1		
9	263-42301-03	GOVERNOR LEVER	1		
10	263-42201-A3	GOVERNOR SHAFT	1		
11	263-42508-03	GOVERNOR SPRING For 50Hz	1		
11	263-42507-03	GOVERNOR SPRING For 60Hz	1		
12	263-42701-01	GOVERNOR ROD	1		
13	263-42801-03	ROD SPRING	1		
14	263-43301-A3	SPEED CONTROL LEVER	1		
15	227-43501-13	STOP PLATE	1		
16	263-45002-03	SPRING WASHER	1		
17	021-70600-30	FRICTION WASHER	2		
18	263-45011-02	BRACKET UNIT, speed control	1		
20	005-11060-01	SNAP PIN	1		
21	001-14063-00	BOLT and WASHER ASS'Y	1		
22	018-60600-20	NUT	1		
23	011-00600-20	FLANGE BOLT	2		
24	011-50500-20	BOLT	1		
25	002-27050-00	NUT	1		
26	017-60600-20	SELF LOCK NUT	1		
28	003-10080-00	WASHER	2		
29	X23-00801-50	SPACER	1		

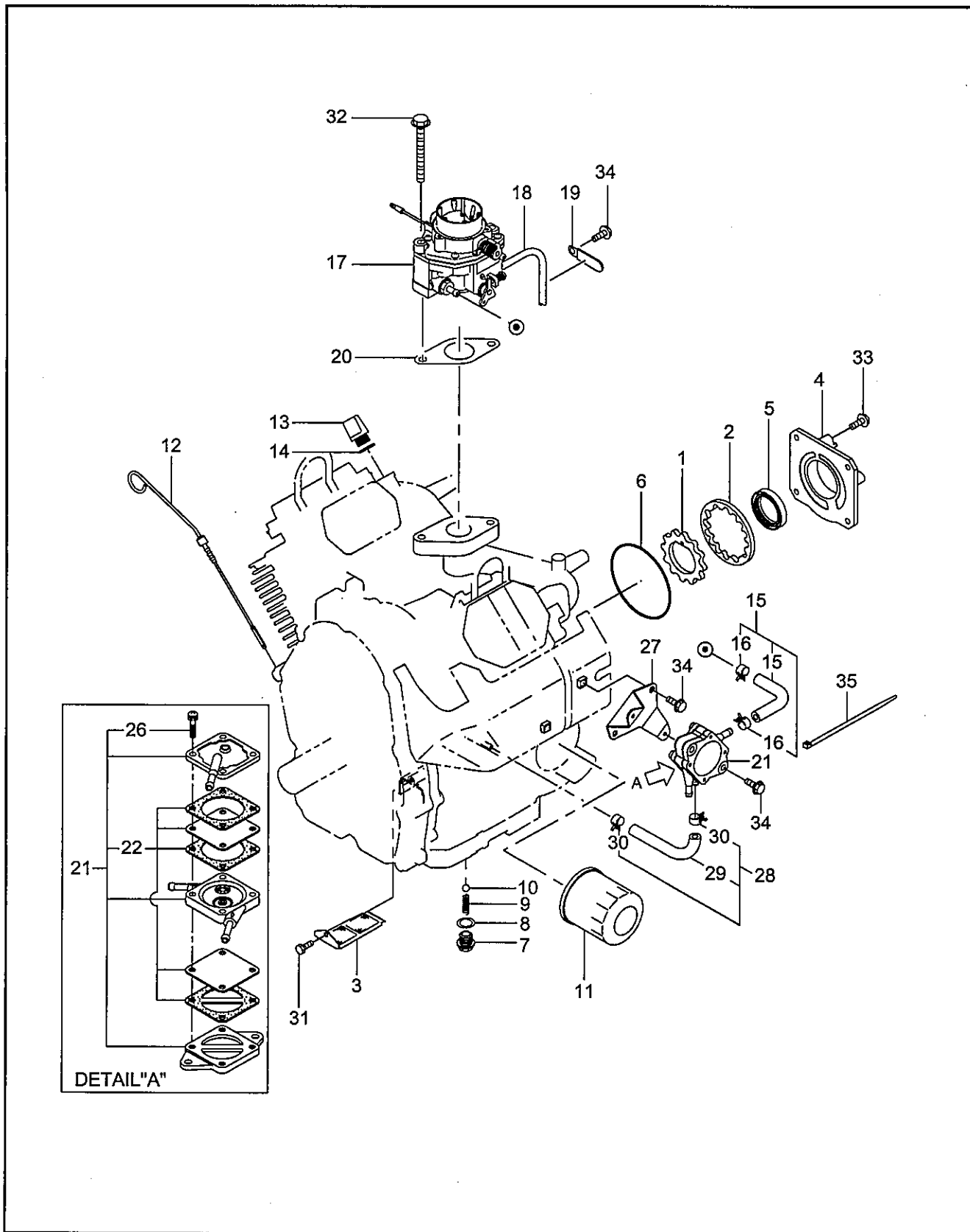
**FIG.10 COOLING and STARTING GROUP**



## FIG.10 COOLING and STARTING GROUP

Ref. No.	Part Number	Description	Q'ty	Interchangeability	Execution
1	263-51101-A2	BLOWER HOUSING UNIT	1	↙○	
1	263-51101-02	BLOWER HOUSING UNIT	1		
2	263-52601-01	CYLINDER BAFFLE 1 COMPL.	1	↙✱	
3	263-52704-A1	CYLINDER BAFFLE 2 COMPL.	1		
3	263-52701-01	CYLINDER BAFFLE 2 COMPL.	1		
4	263-52801-03	CYLINDER BAFFLE 3	1		
5	263-52911-B2	CYLINDER BAFFLE 4 UNIT	1		
6	011-00600-20	FLANGE BOLT (M6×12mm)	7		
9	263-54101-02	COOLING BLOWER UNIT	1		
12	001-14061-60	BOLT and WASHER ASS'Y	4		
14	011-00600-30	FLANGE BOLT (M6×14mm)	8		
15	056-60002-50	CLAMP	1		

FIG.11 FUEL, LUBRICANT GROUP

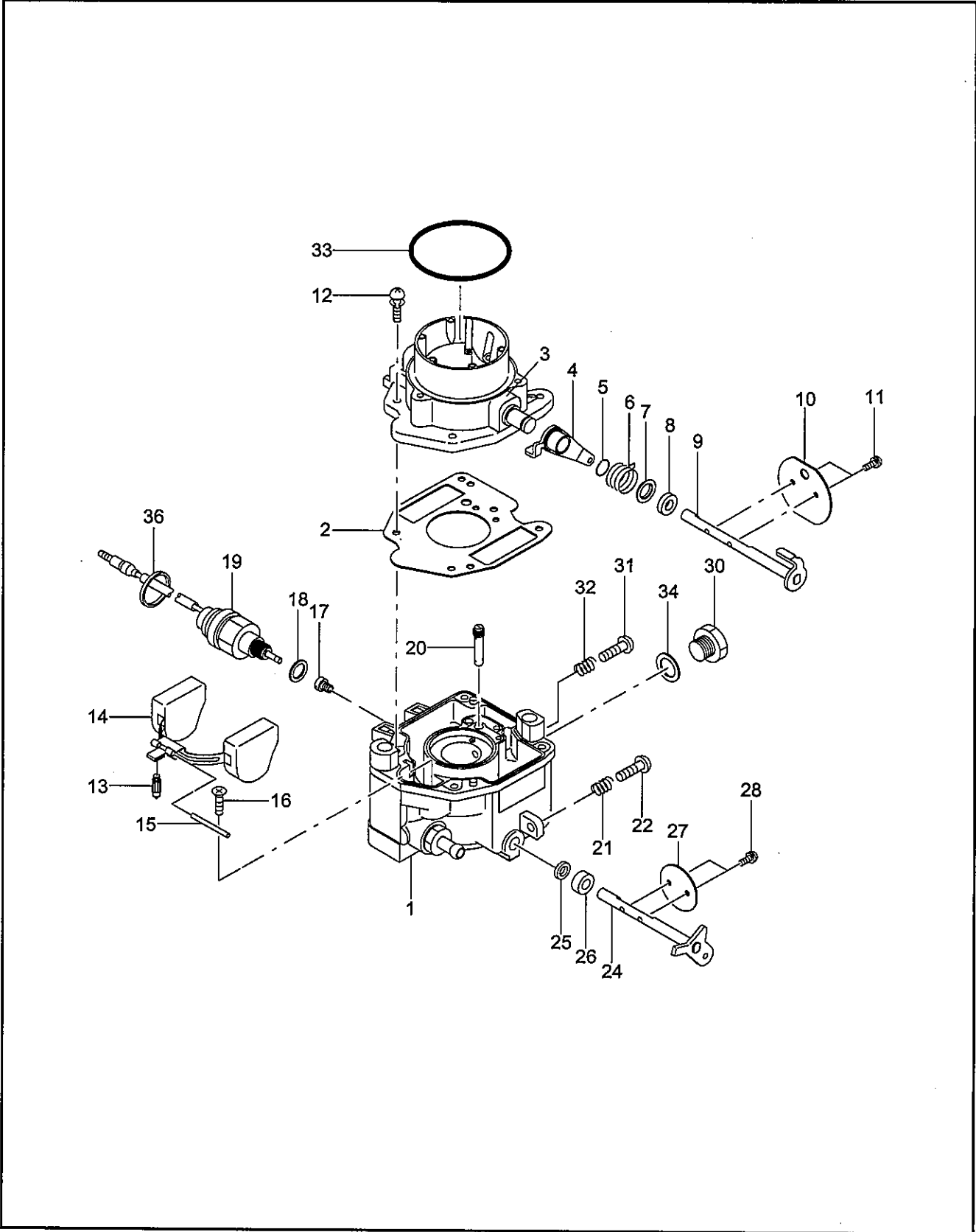




### FIG.11 FUEL, LUBRICANT GROUP

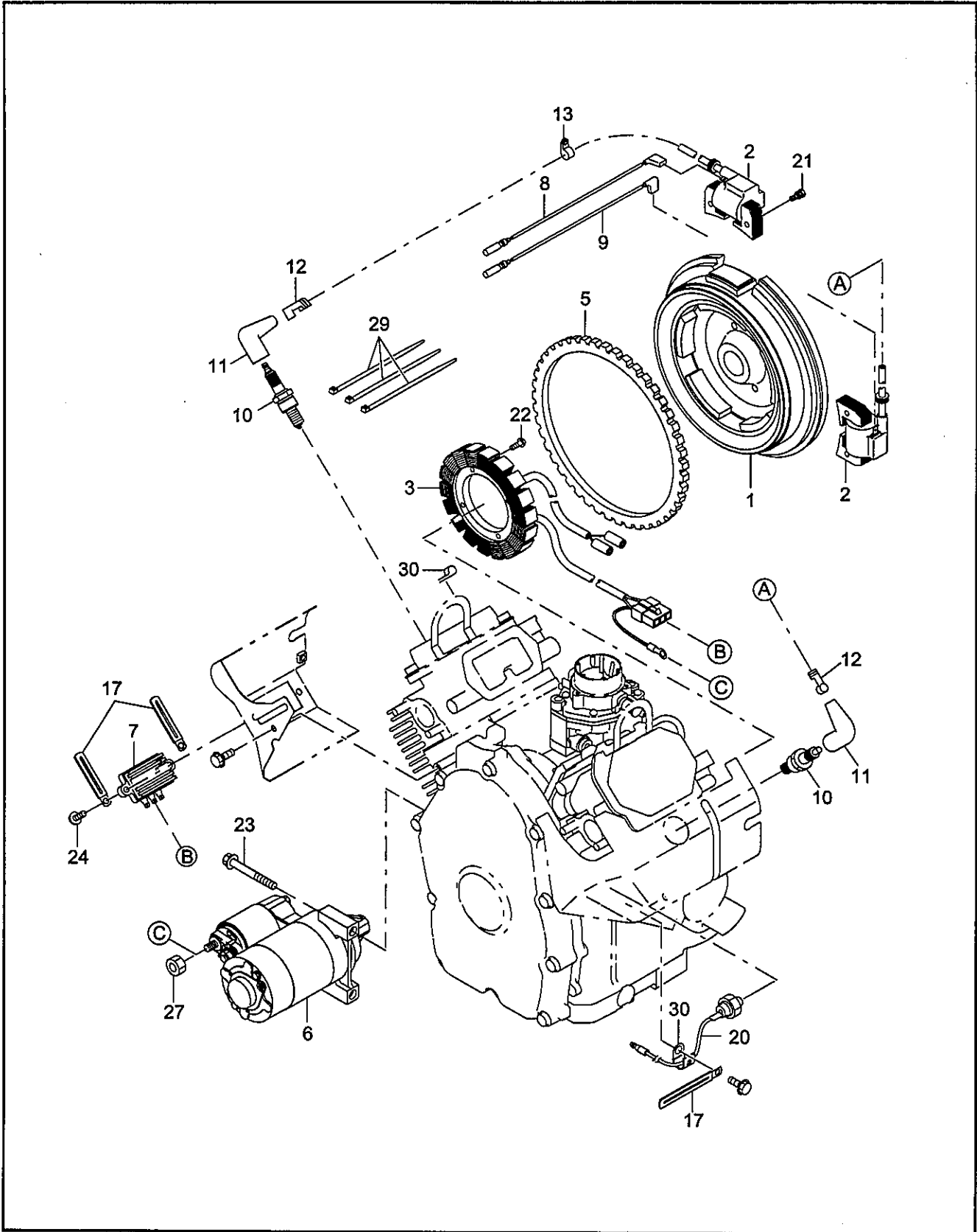
				Interchangeability	
Ref. No.	Part Number	Description	Q'ty	Execution	
1	263-63901-03	INNER ROTOR	1	↙*	
2	263-63902-03	OUTER ROTOR	1		
3	263-64302-02	OIL PUMP FILTER UNIT	1		
3	263-64301-02	OIL PUMP FILTER UNIT	1		
*4	263-64001-01	OIL PUMP COVER, compl. Includes item 5	1		
5	044-03500-90	OIL SEAL	1		
6	X24-08900-20	O RING	1		
7	263-65001-13	PLUG, oil relief	1		
8	003-70140-00	GASKET, aluminum	1		
9	248-65601-03	SPRING, relief valve	1		
10	006-90308-00	STEEL BALL	1		
11	248-65801-00	OIL FILTER ASS'Y	1		↙○
11	261-65902-A0	OIL FILTER ASS'Y	1		
12	263-63603-01	OIL GAUGE, compl.	1		
13	263-63602-03	OIL FILTER CAP	1		
14	021-31600-10	GASKET	1		
*15	263-62601-01	FUEL PIPE, compl. Includes items 15 and 16	1		
15	263-68001-A3	RUBBER PIPE (1/4" x 1/2" )	1		
15	263-68001-03	RUBBER PIPE (1/4" x 1/2" )	1		
16	263-68501-03	HOSE CLAMP	2		
17	263-62503-00	CARBURETOR ASS'Y	1		
18	160-67402-A3	VINYL PIPE	1	↙○	
19	206-75501-01	CLAMP, compl.	2		
20	263-66201-A3	GASKET, carburetor	1		
20	263-66201-03	GASKET, carburetor	1		
*21	248-62201-00	FUEL PUMP ASS'Y Includes items 22 and 26	1		
22	251-62251-08	DIAPHRAGM GASKET SET	1		
26	251-62250-08	SCREW	4		
27	263-65002-A3	BRACKET, fuel pump	1		
27	263-65002-02	BRACKET, fuel pump	1		
*28	263-62650-01	PULSE PIPE, compl. Includes items 29 and 30	1		↙○
29	263-68051-A3	RUBBER PIPE (1/4" x 1/2" )	1		
29	263-68051-03	RUBBER PIPE (1/4" x 1/2" )	1		
30	263-68501-03	HOSE CLAMP	2		
31	263-65011-A3	FLANGE BOLT	1		
31	X10-10500-10	BOLT (10-32UNF-2A)	1	↙*	
32	011-00801-10	FLANGE BOLT (M8x80mm)	2		
33	011-00601-40	FLANGE BOLT (M6x18mm)	4		
34	011-00600-20	FLANGE BOLT (M6x12mm)	5		
35	056-30000-40	WIRE BAND	1		

**FIG.12 CARBURETOR GROUP**





**FIG.13 ELECTRIC DEVICE GROUP**

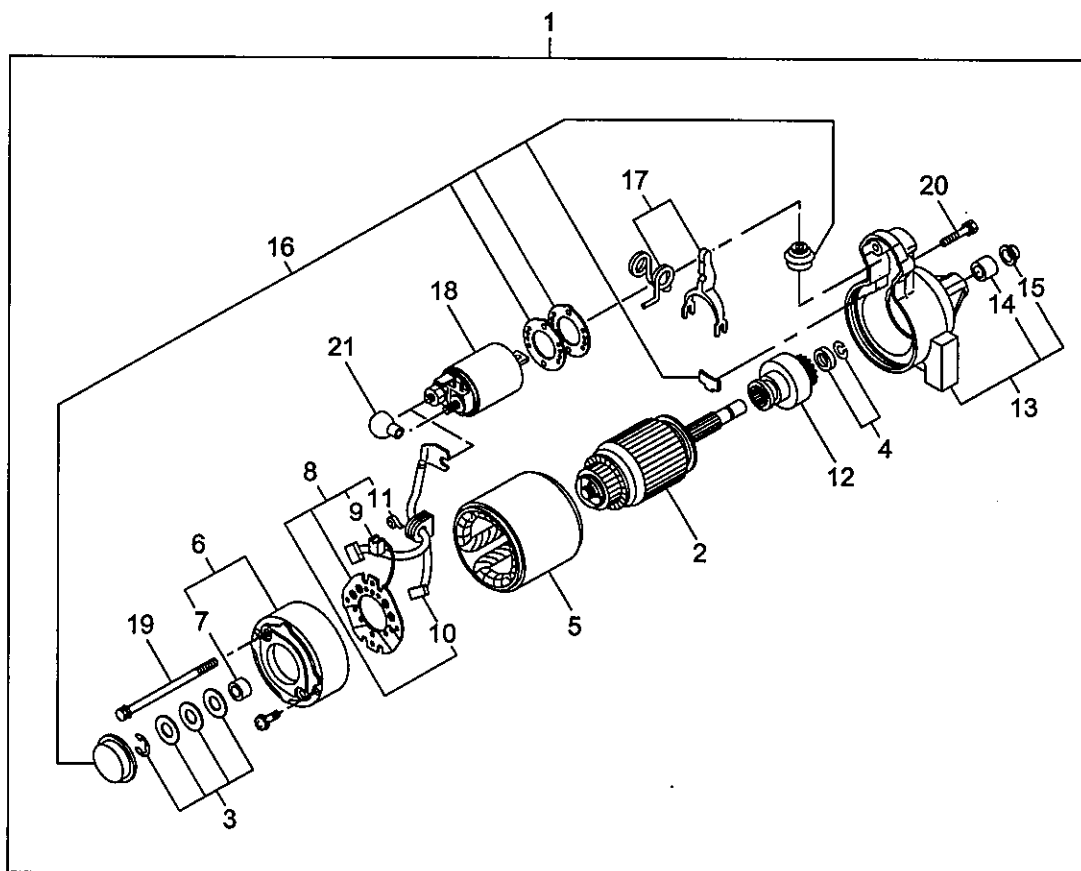


### FIG.13 ELECTRIC DEVICE GROUP

Interchangeability

Ref. No.	Part Number	Description	Q'ty		Execution	
1	263-77202-11	FLYWHEEL, compl.	1			
1	263-77202-01	FLYWHEEL, compl.	1			
2	263-78201-01	IGNITION COIL, compl.	2			
3	263-79405-A1	CHARGE COIL, compl.	1			
3	263-79411-A1	CHARGE COIL, compl.	1			
5	263-71001-03	RING GEAR	1			
6	263-70502-A0	STARTING MOTOR ASS'Y	1			
7	263-71901-01	REGULATOR, compl.	1			
8	263-73016-01	WIRE 4, compl.	1			
9	263-73017-01	WIRE 5, compl.	1			
10	065-01404-80	SPARK PLUG (BPR6ES)	2			
11	065-50001-40	SPARK PLUG CAP	2			
12	065-90000-10	PLUG TERMINAL	2			
13	206-75501-01	CLAMP, compl.	1			
17	056-60002-50	CLAMP	3			
20	263-73102-A1	WIRE ASS'Y, oil pressure switch	1			
21	001-14063-00	BOLT and WASHER ASS'Y	4			
22	013-10500-40	SCREW and WASHER ASS'Y (M5×20mm)	4			
23	011-00801-00	FLANGE BOLT (M8×65mm)	2			
24	011-00601-40	FLANGE BOLT (M6×18mm)	2			
27	002-38080-00	FLANGE NUT	1			
29	056-30000-10	WIRE BAND	3			
30	206-75501-01	CLAMP, compl.	2			

**FIG.14 STARTING MOTOR GROUP**





**FIG.15 ACCESSORIES GROUP**

