



PARTS CATALOG

Robin

Generator

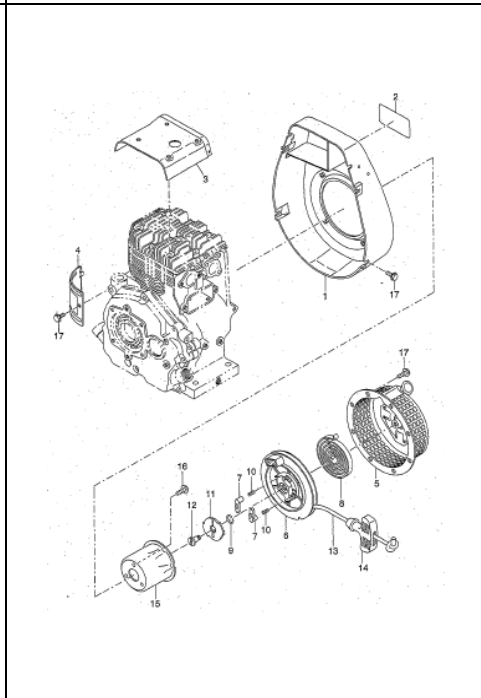
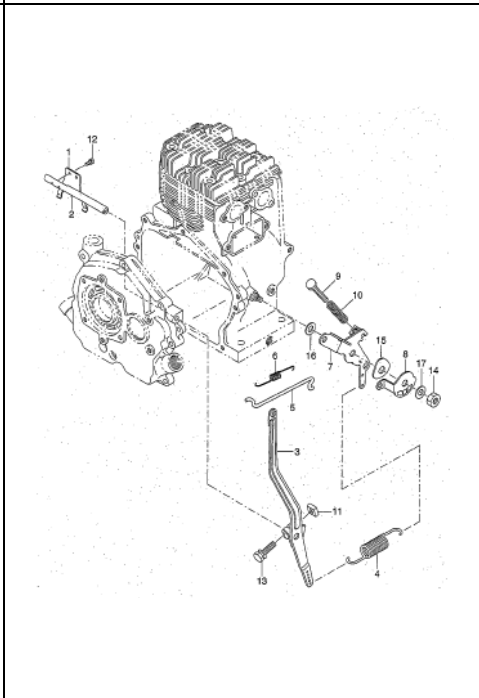
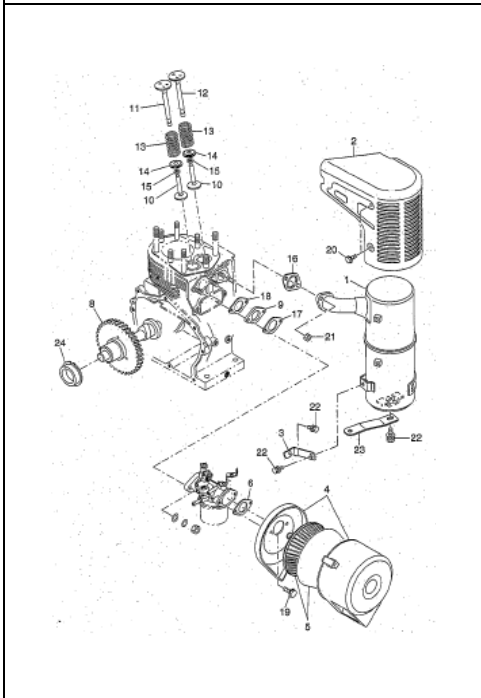
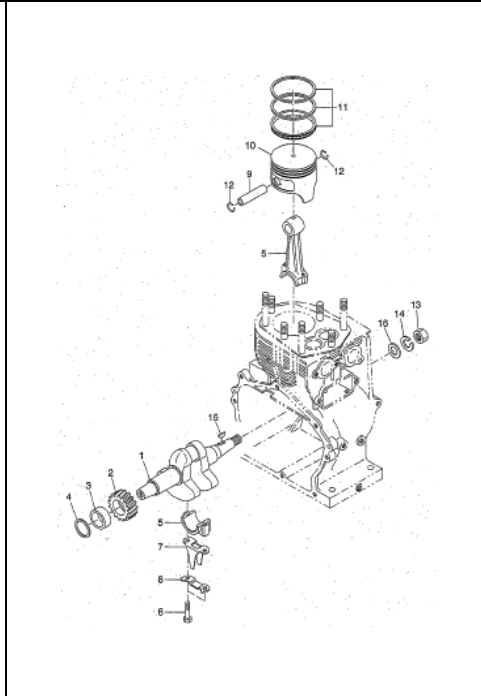
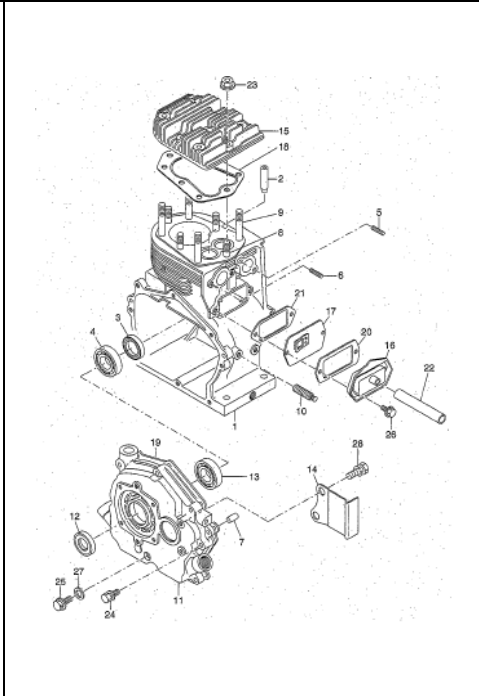
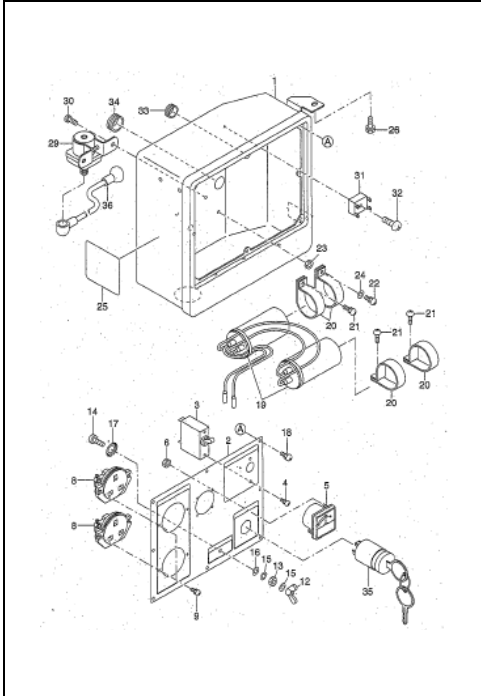
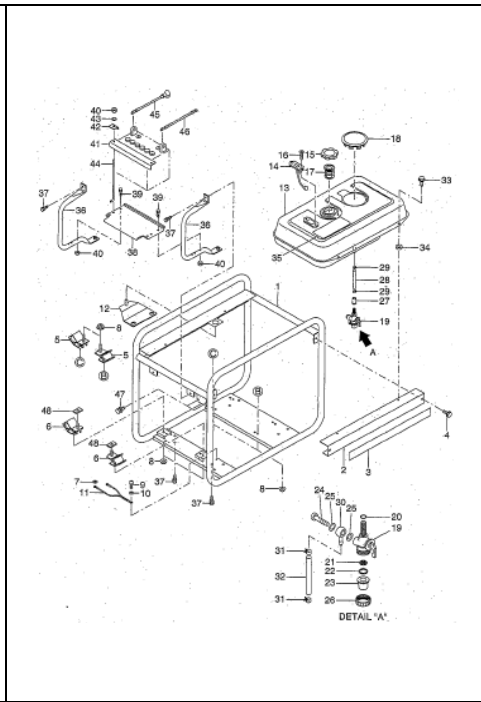
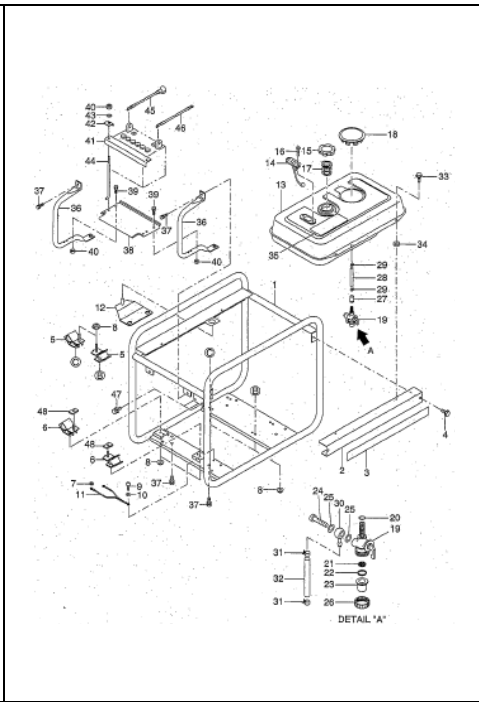
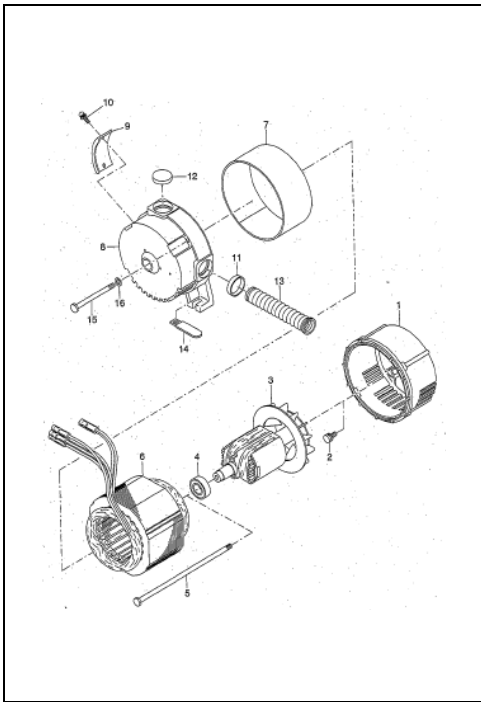
Model

RGX5510

Spec.No. RX551018620 (BF RECEPTACLE)

 **FUJI HEAVY INDUSTRIES LTD.**

ISSUE EMD-GP1470



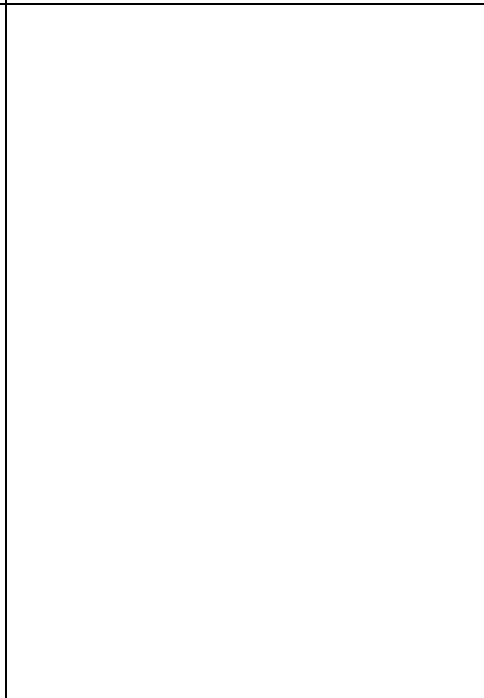
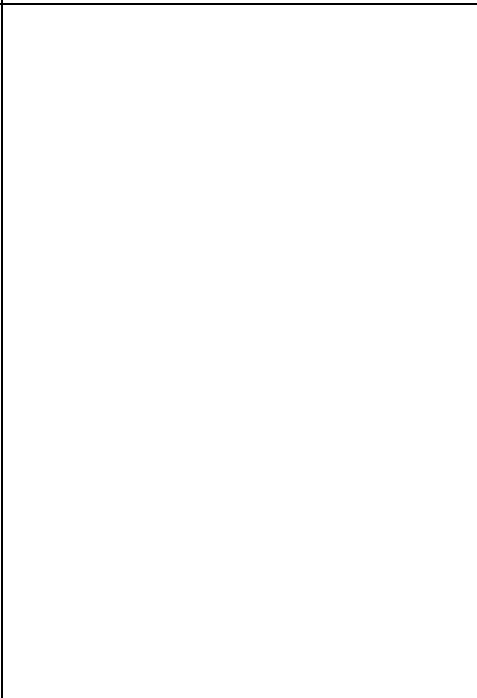
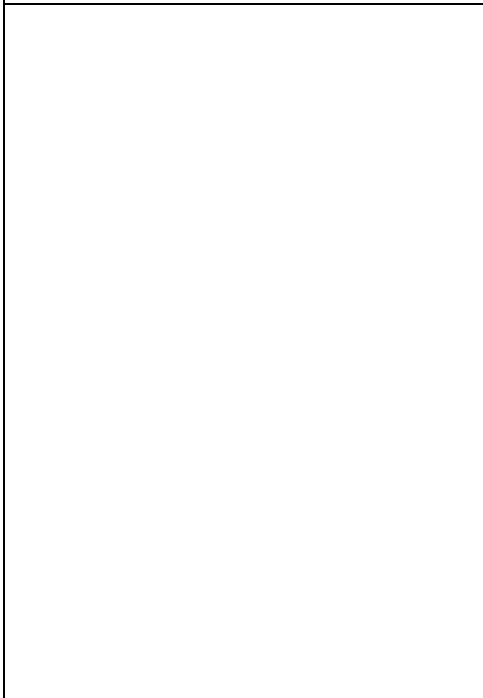
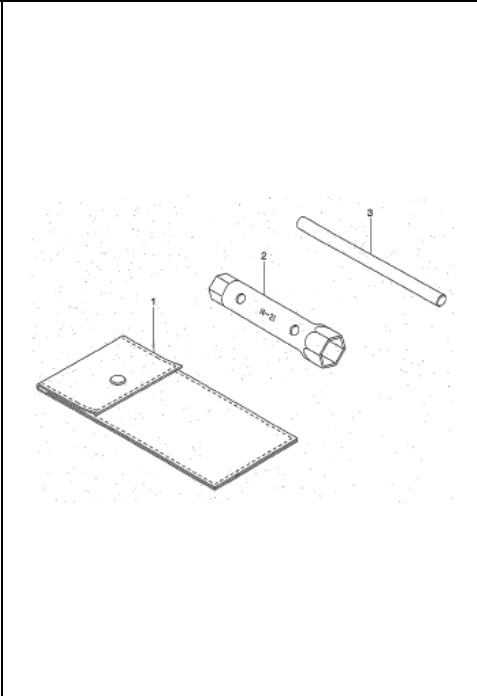
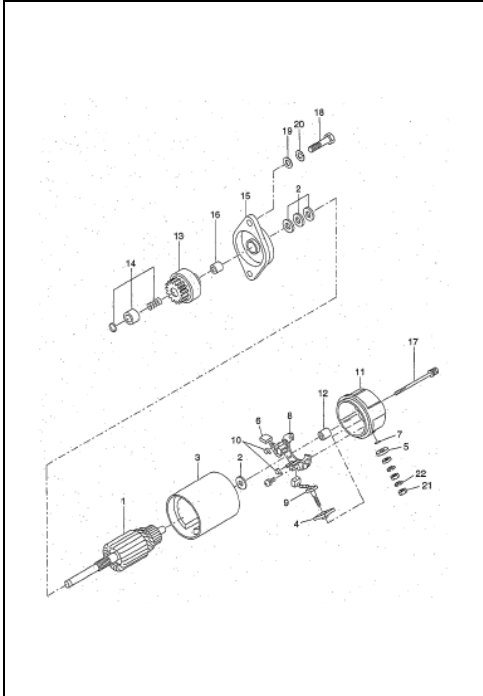
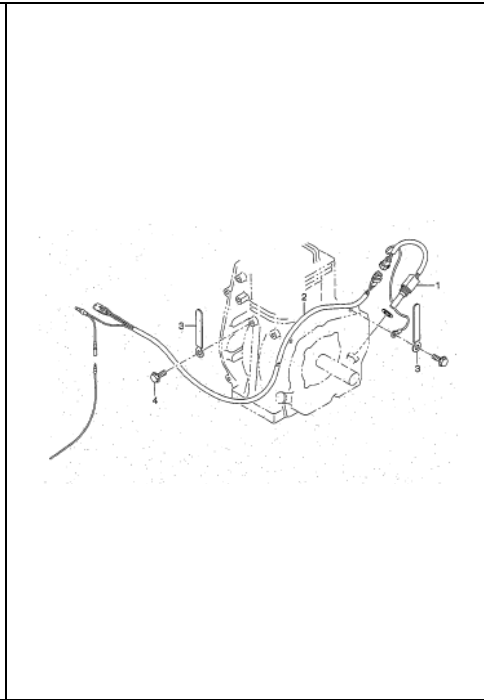
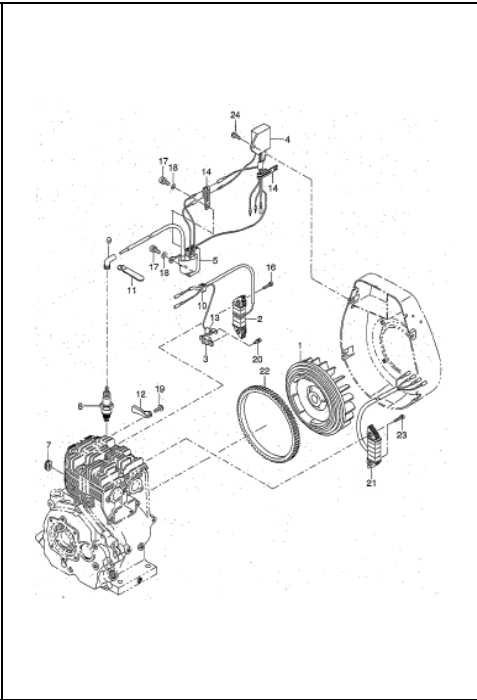
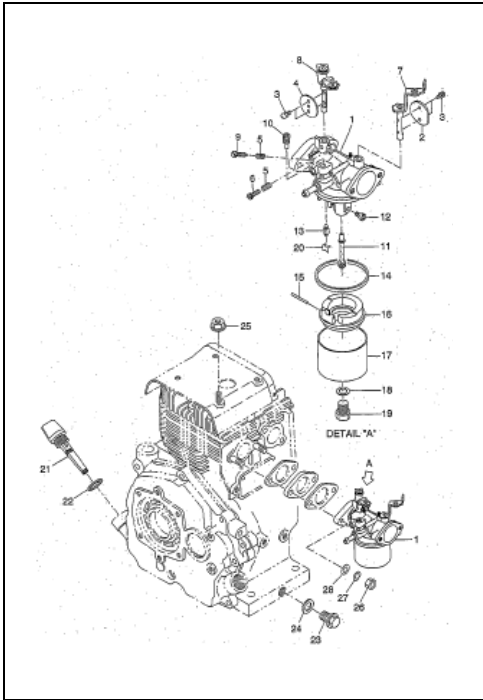


FIG.1 GENERATOR

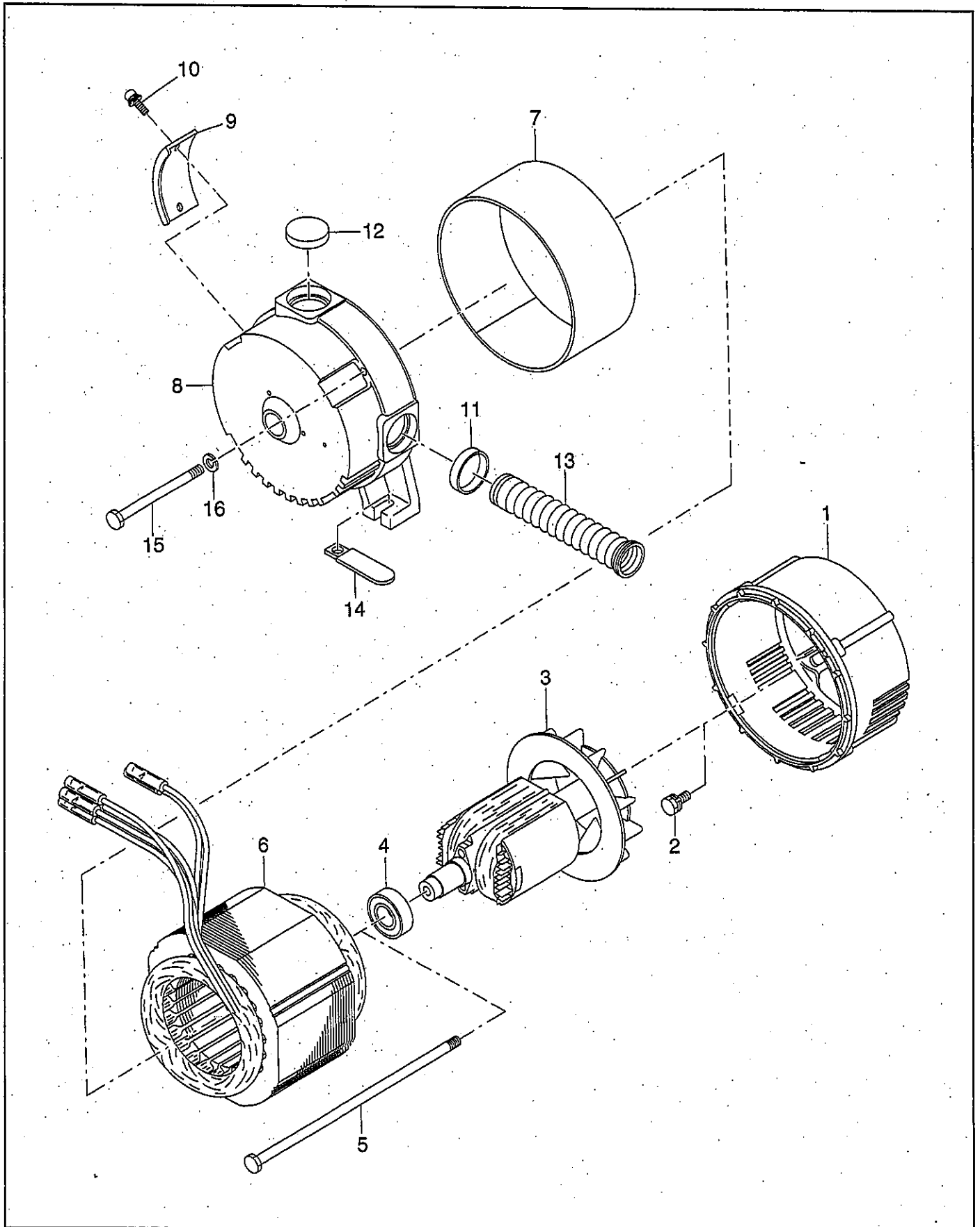


FIG.2 PIPE FRAME and FUEL TANK

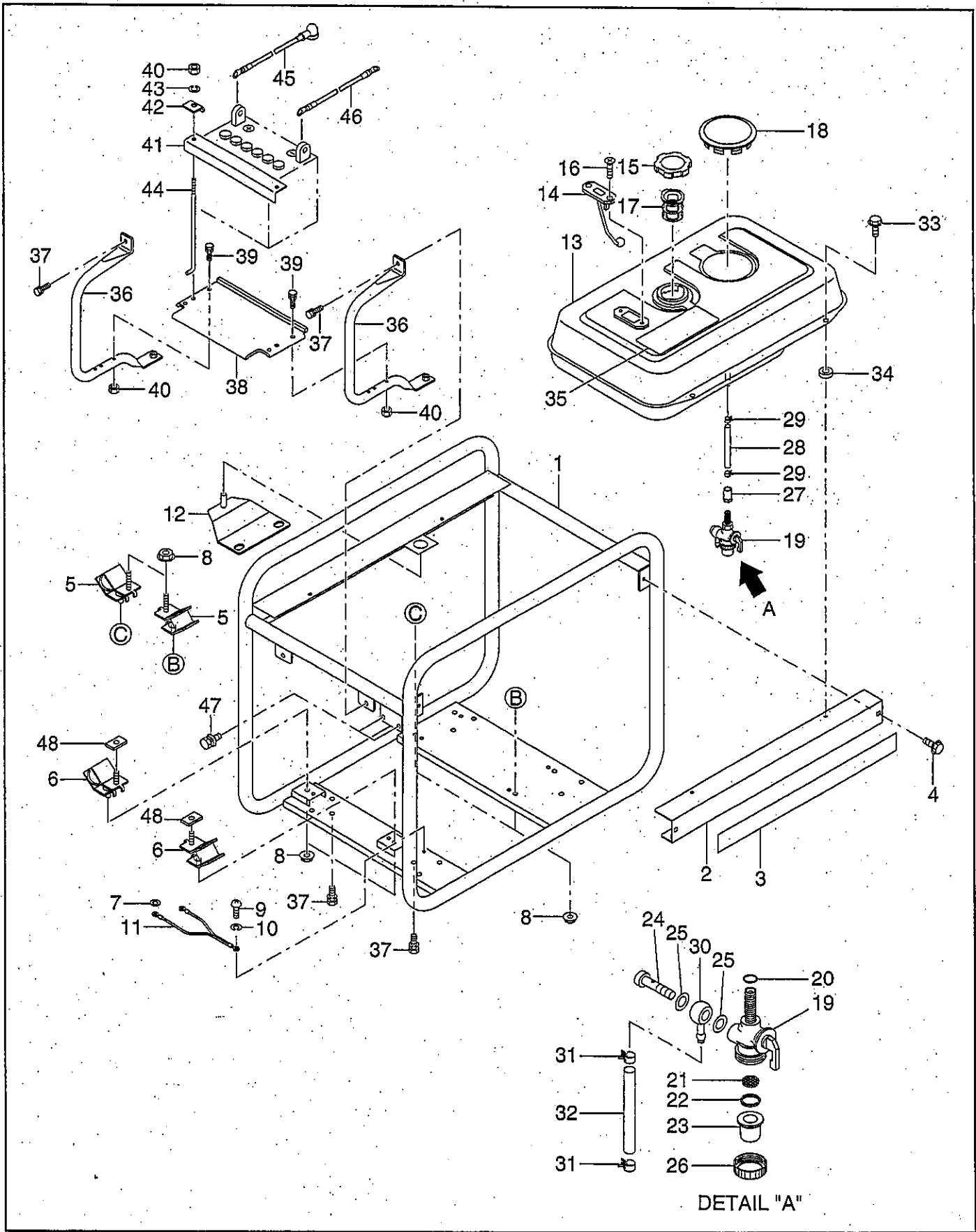


FIG.2 PIPE FRAME and FUEL TANK

↵ Interchangeability

Ref. No.	Part Number	Description	Q'ty	Execution
1	390-65502-01	PIPE FRAME, compl.	1	
2	390-65601-01	SIDE PLATE, compl.	1	
3	390-87101-03	LABEL (RGX5510)	1	
4	011-00600-80	FLANGE BOLT (M6 × 12mm)	2	
5	31D-35002-01	RUBBER MOUNT UNIT, engine side	2	
6	31D-35001-01	RUBBER MOUNT UNIT, generator side	2	
7	003-10080-00	WASHER	1	
8	002-38080-00	FLANGE NUT	8	
9	341-00508-00	SCREW (M5 × 10mm)	1	
10	332-00050-08	SPRING WASHER	1	
11	390-54415-08	EARTH CORD	1	
12	390-54412-18	STOPPER PLATE	1	
13	224-69007-01	FUEL TANK, compl. (Color : CANARY YELLOW)	1	
14	064-80003-00	FUEL GAUGE, compl.	1	
15	043-04300-15	FUEL TANK CAP, compl.	1	
16	014-50500-40	SCREW, counter head	2	
17	064-13600-10	FUEL FILTER	1	
18	227-66001-03	PLUG COVER	1	
*19	064-20023-11	FUEL STRAINER ASS'Y Includes items 20 thru 26	1	
20	064-20003-30	O RING	1	
21	064-20002-20	FILTER	1	
22	064-20002-30	PACKING	1	
23	064-20019-10	CUP	1	
24	064-20002-40	BANJO BOLT	1	
25	064-20002-50	FIBER PACKING	2	
26	064-20024-10	LOCK NUT	1	
27	053-30900-20	NUT, joint	1	
28	085-11100-00	RUBBER PIPE (φ 11.5 × φ 17.5 × 230mm)	1	
29	056-11700-10	HOSE CLAMP	2	
30	052-10700-42	BANJO	1	
31	056-11100-20	HOSE CLAMP	2	
32	085-10600-00	RUBBER PIPE (φ 6 × φ 12 × 190mm)	1	
33	011-00602-20	FLANGE BOLT	4	
34	391-39000-13	RUBBER WASHER	4	
35	388-93003-03	CAUTION LABEL For English	1	
36	390-56076-08	BATTERY FRAME	2	
37	001-14082-00	BOLT and WASHER ASS'Y	4	
38	389-54451-08	BATTERY BASE	1	
39	001-11063-50	BOLT and WASHER ASS'Y	4	
40	002-17060-00	NUT	6	
41	385-54382-08	BATTERY RETAINER	1	
42	385-54416-08	BATTERY SUPPORT	2	
43	003-20060-00	SPRING WASHER	2	
44	353-59921-08	BATTERY BOLT	2	

'00-03

RGX5510

FIG.2 PIPE FRAME and FUEL TANK

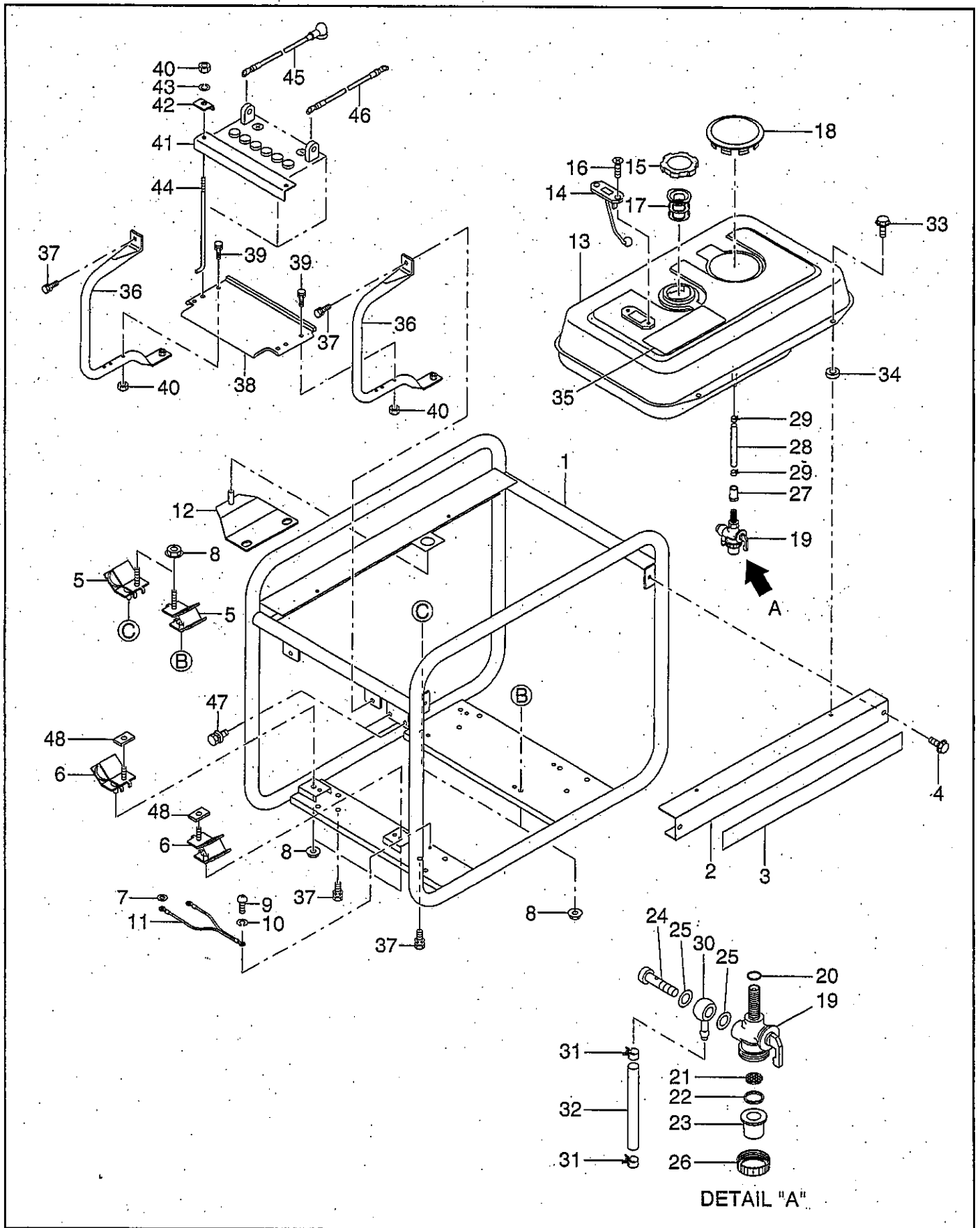


FIG.3 CONTROL BOX (BF RECEPTACLE)

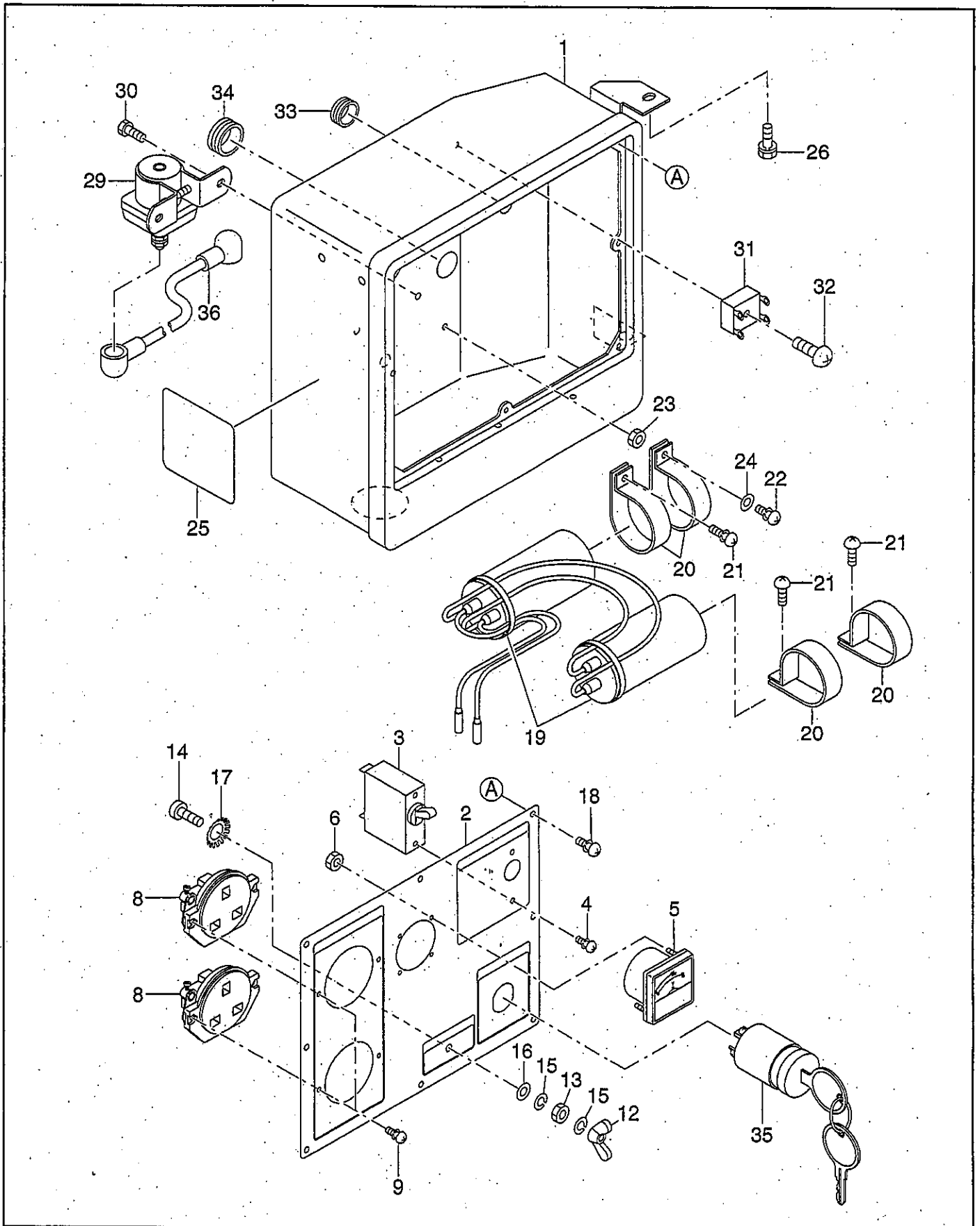


FIG.3 CONTROL BOX (BF RECEPTACLE)

┌ Interchangeability

Ref. No.	Part Number	Description	Q'ty	Execution
*1	390-76516-00	CONTROL BOX ASS'Y Includes items 1 thru 6, 8,9,12 thru 24, 29 thru 35	1	
1	390-76402-02	CONTROL BOX, compl.	1	
*2	390-76018-00	CONTROL PANEL A ASS'Y Includes items 2 thru 6,8,9,12 thru 17 and 35	1	
2	390-76108-01	CONTROL PANEL A, compl.	1	
3	31D-73005-03	NO FUSE BREAKER (18A)	1	
4	004-35030-50	SCREW and WASHER ASS'Y (M3 x 5mm)	2	
5	391-47902-01	VOLTMETER (AC200V)	1	
6	388-49801-08	NUT (M3)	2	
8	358-40616-08	RECEPTACLE (250V-13A)	2	
9	31F-76002-01	SCREW and WASHER ASS'Y (M3.5 x 8mm)	4	
12	353-49901-08	WING NUT (M5)	1	
13	353-49902-08	NUT (M5)	1	
14	356-49907-08	SCREW (M5 x 15mm)	1	
15	332-00050-08	SPRING WASHER	2	
16	353-49903-08	WASHER	1	
17	372-59905-08	LOCK WASHER	1	
18	353-49904-08	SCREW (M4 x 10mm)	8	
19	390-47553-08	CONDENSER, compl. (28 μF x 2)	1	
20	380-47531-08	CONDENSER HOLDER	4	
21	004-35041-00	SCREW and WASHER ASS'Y (M4 x 10mm)	3	
22	389-59989-08	SCREW and WASHER ASS'Y (M4 x 15mm)	1	
23	389-59990-08	NUT (M4)	1	
24	332-00050-08	SPRING WASHER	1	
25	390-87004-03	LABEL (SPEC)	1	
26	001-10061-20	BOLT and WASHER ASS'Y (M6 x 15mm)	1	
29	214-77001-10	MAGNETIC SWITCH	1	
30	001-65051-20	BOLT	2	
31	363-45803-08	DIODE STACK	1	
32	389-59979-08	SCREW and WASHER ASS'Y (M3 x 18mm)	1	
33	355-57509-08	GROMMET	1	
34	374-47540-08	GROMMET	1	
35	066-00003-30	KEY SWITCH	1	
36	390-54454-08	BATTERY CORD (+)	1	

FIG.4 CRANKCASE GROUP

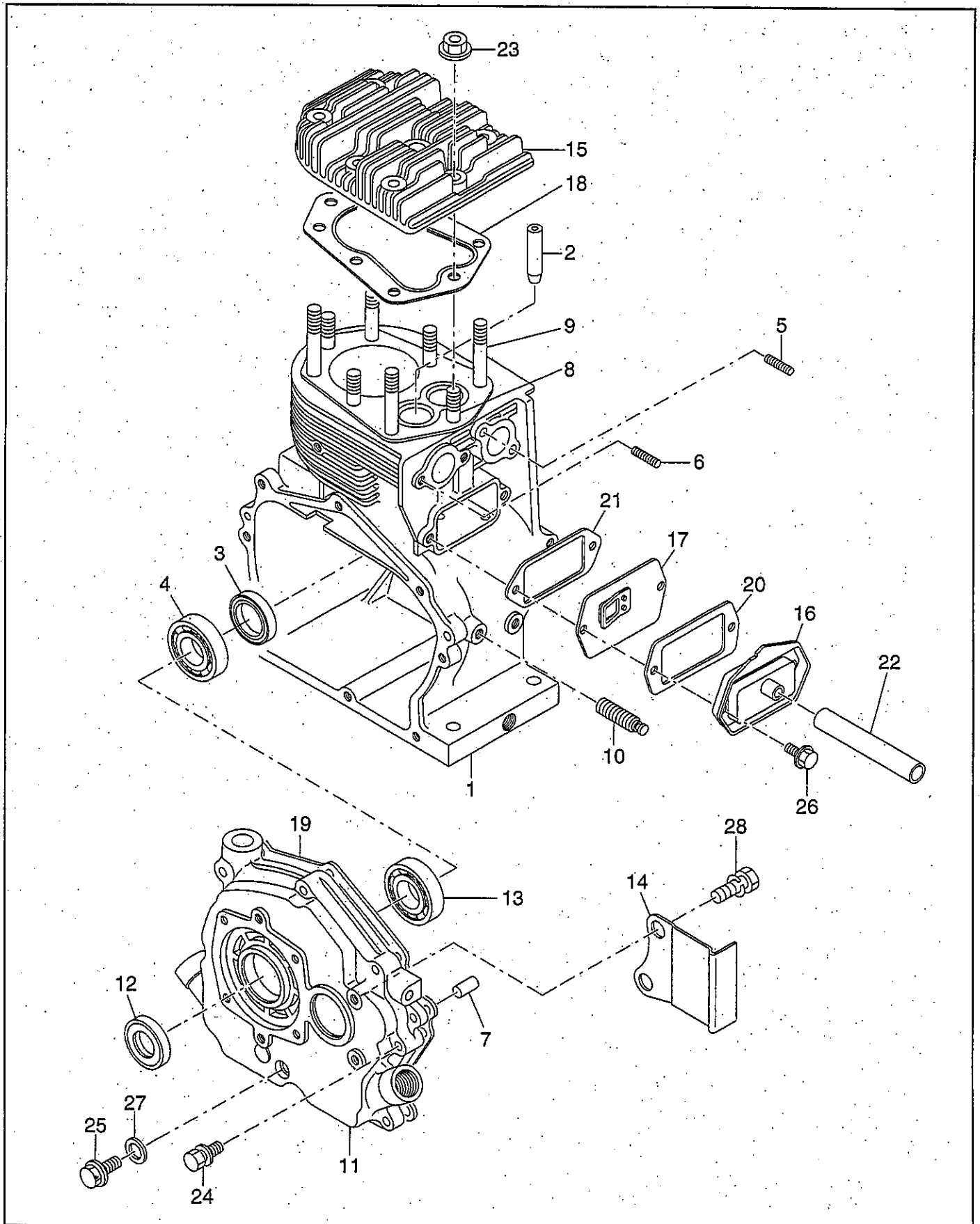


FIG.5 CRANKSHAFT and PISTON GROUP

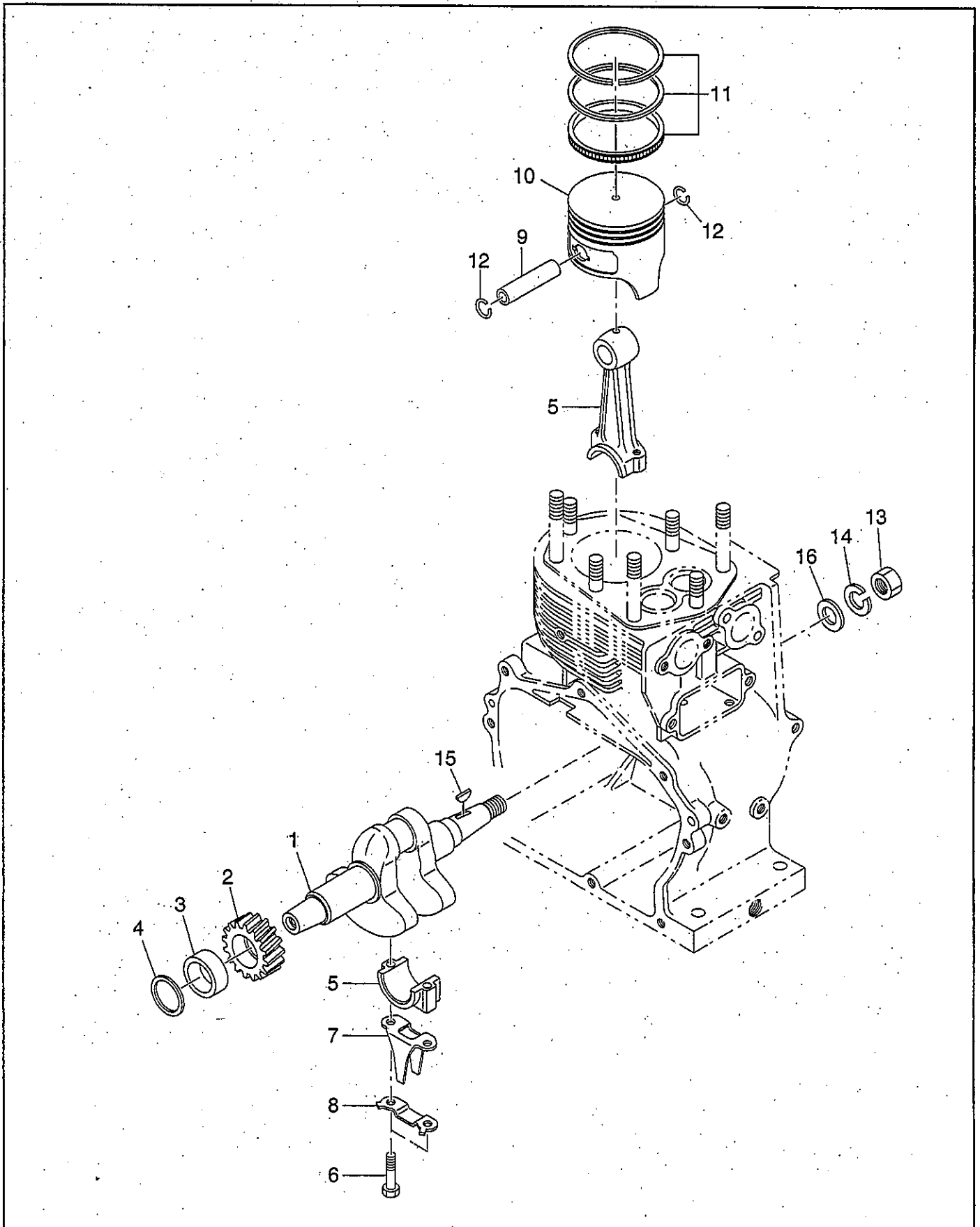


FIG.6 INTAKE and EXHAUST GROUP

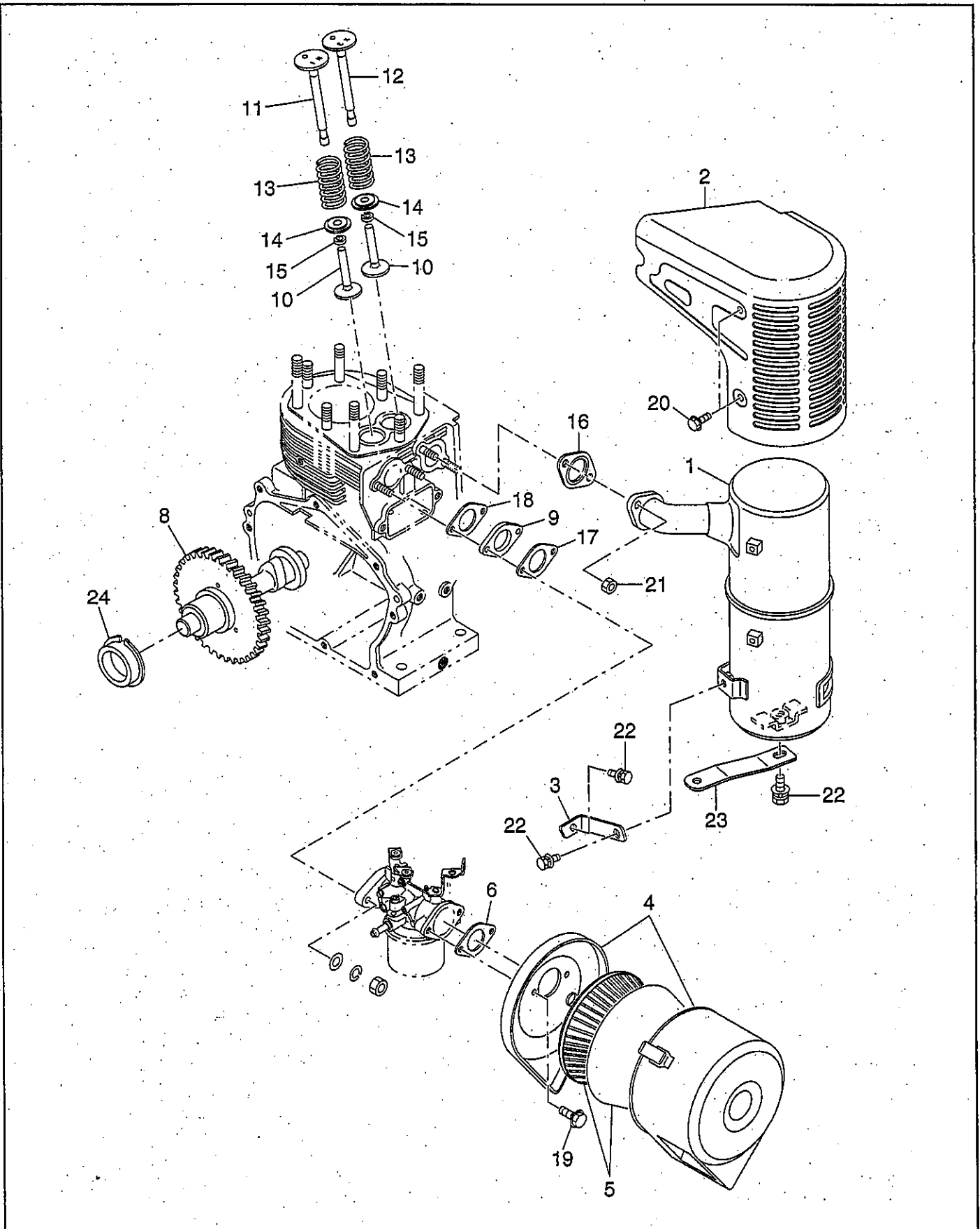


FIG.7 GOVERNOR, OPERATE GROUP

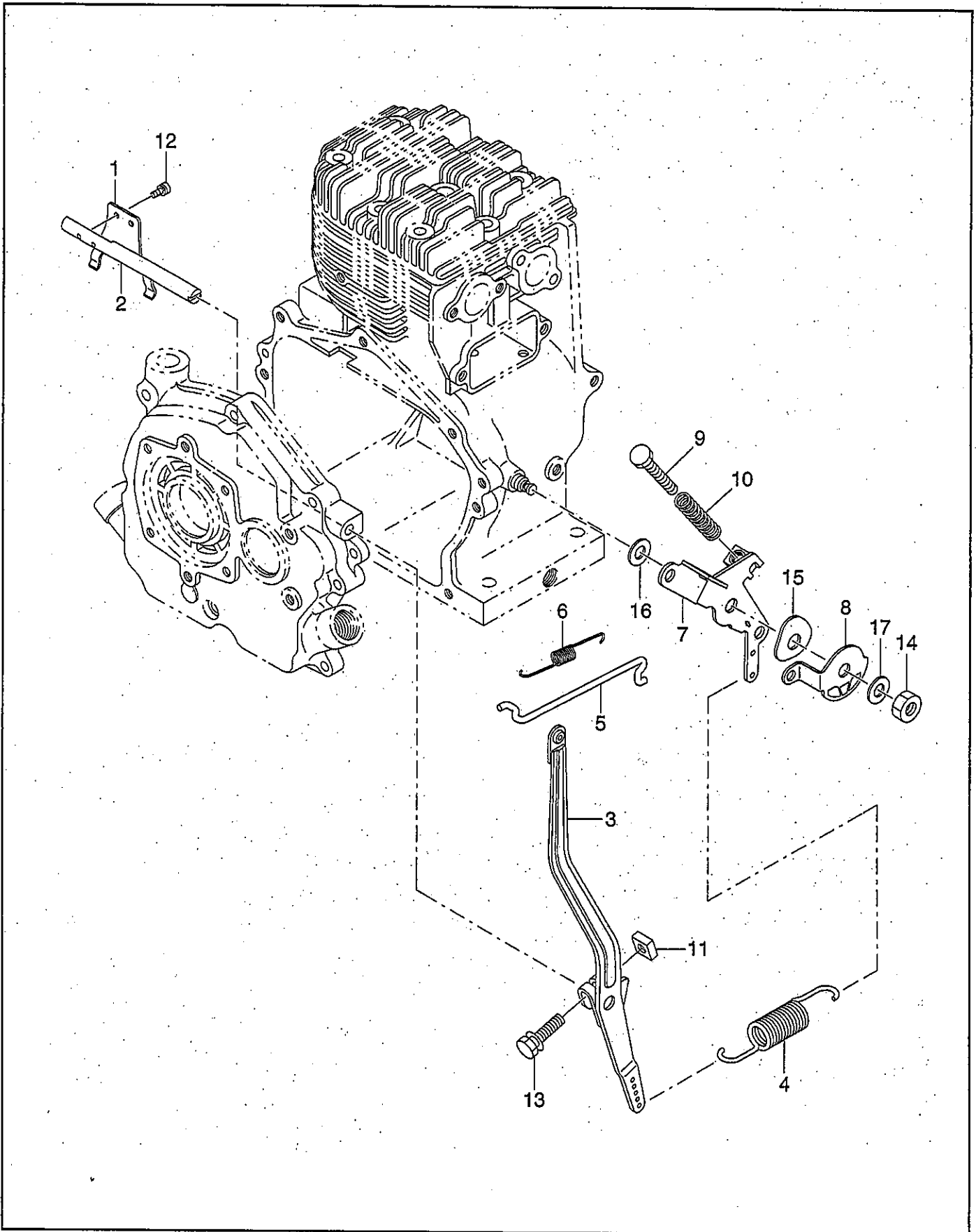


FIG.8 COOLING and STARTING GROUP

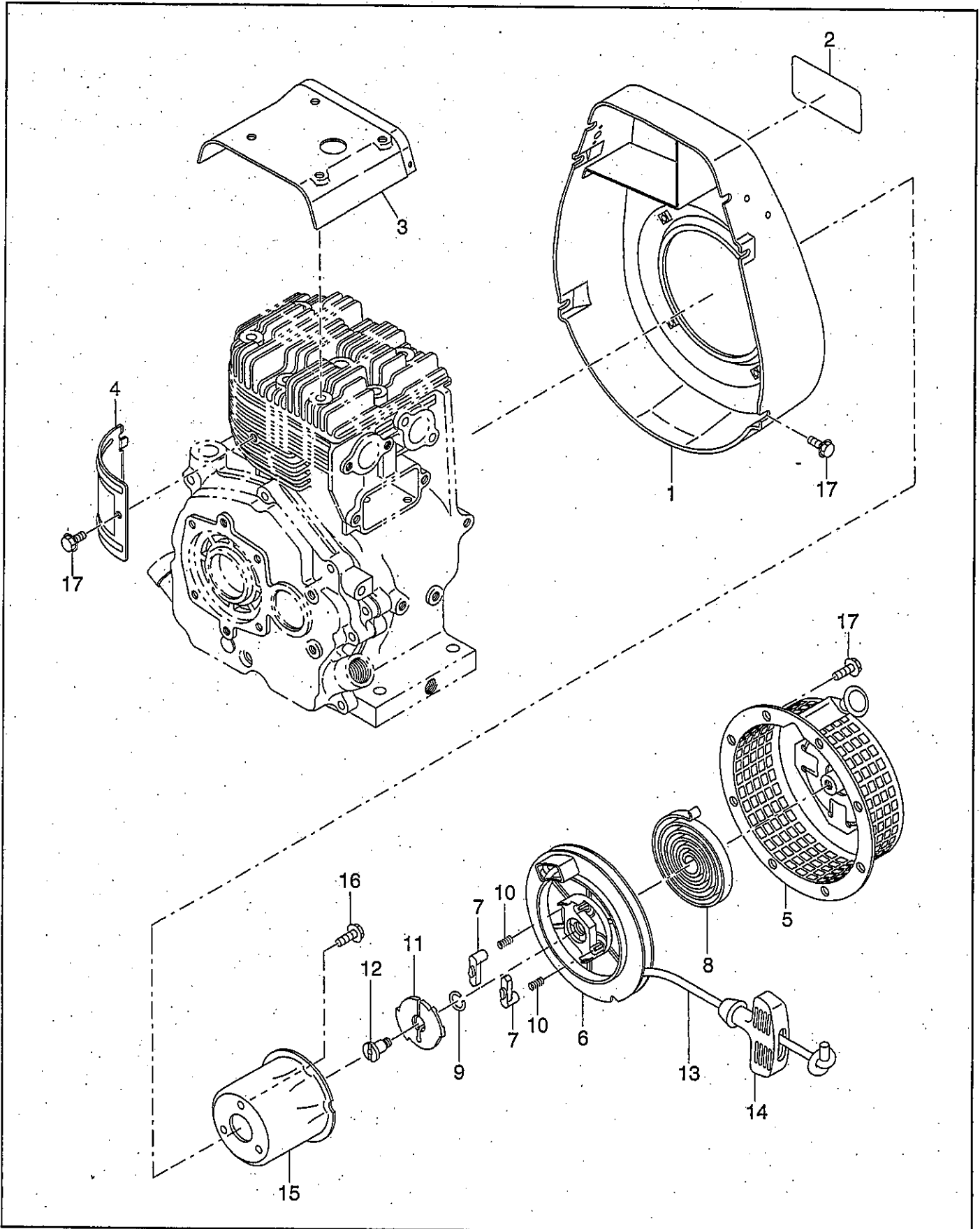


FIG.9 FUEL, LUBRICANT GROUP

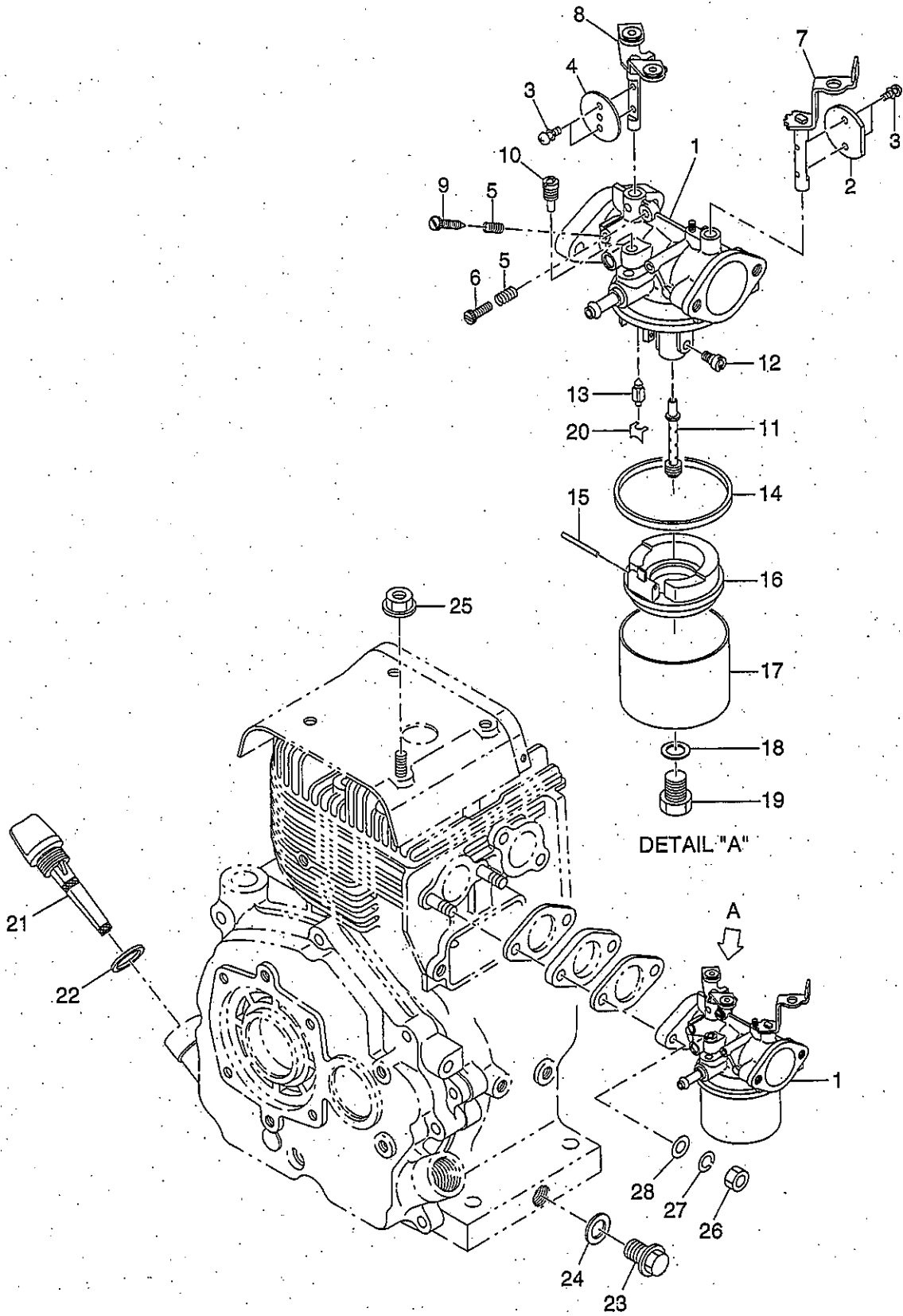


FIG.10 ELECTRIC DEVICE GROUP

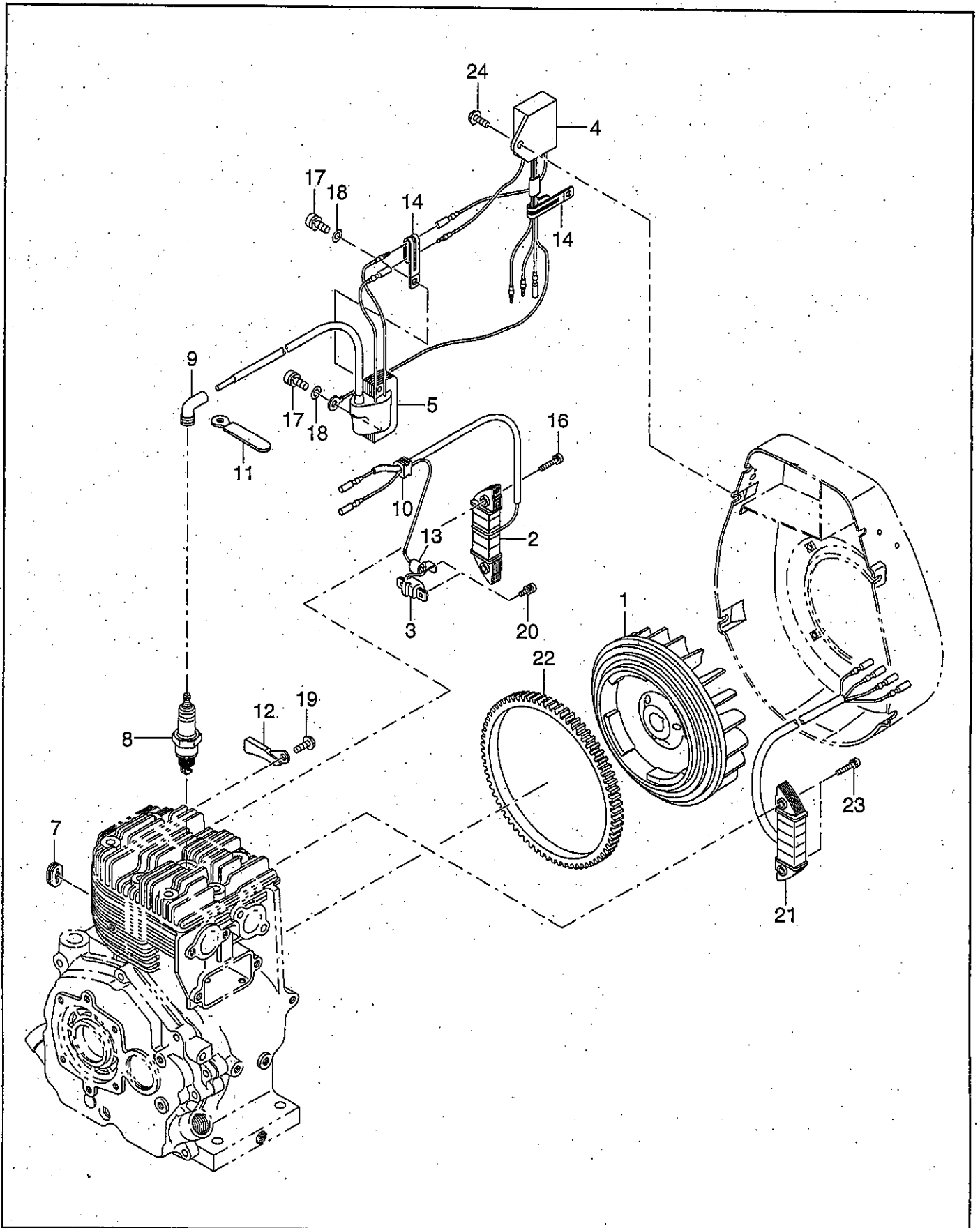


FIG.10 ELECTRIC DEVICE GROUP

↙ Interchangeability

Ref. No.	Part Number	Description	Q'ty	Execution
1	224-70123-08	FLYWHEEL, compl.	1	
2	224-70135-08	EXCITER COIL	1	
3	224-70150-08	PULSER COIL	1	
4	224-72250-01	KTR UNIT	1	
5	224-72205-11	IGNITION COIL, compl.	1	
7	224-75501-03	GROMMET	1	
8	065-01402-70	SPARK PLUG (NGK BPR-4HS)	1	
9	065-50001-10	SPARK PLUG CAP	1	
10	024-10900-50	GROMMET	1	
11	056-60002-20	CLAMP	1	
12	224-77002-01	WIRE CLAMP, compl.	1	
13	205-78201-01	CLAMP, compl.	1	
14	056-60002-50	CLAMP	2	
16	004-35062-50	SCREW and WASHER ASS'Y	2	
17	004-35062-00	SCREW and WASHER ASS'Y	2	
18	003-10060-00	WASHER	2	
19	011-00600-20	FLANGE BOLT	1	
20	004-35041-20	SCREW and WASHER ASS'Y	2	
21	224-70140-08	LAMP COIL	1	
22	224-71002-03	RING GEAR	1	
23	004-35063-00	SCREW and WASHER ASS'Y	2	
24	011-00600-50	FLANGE BOLT	1	

FIG.11 OIL SENSOR GROUP

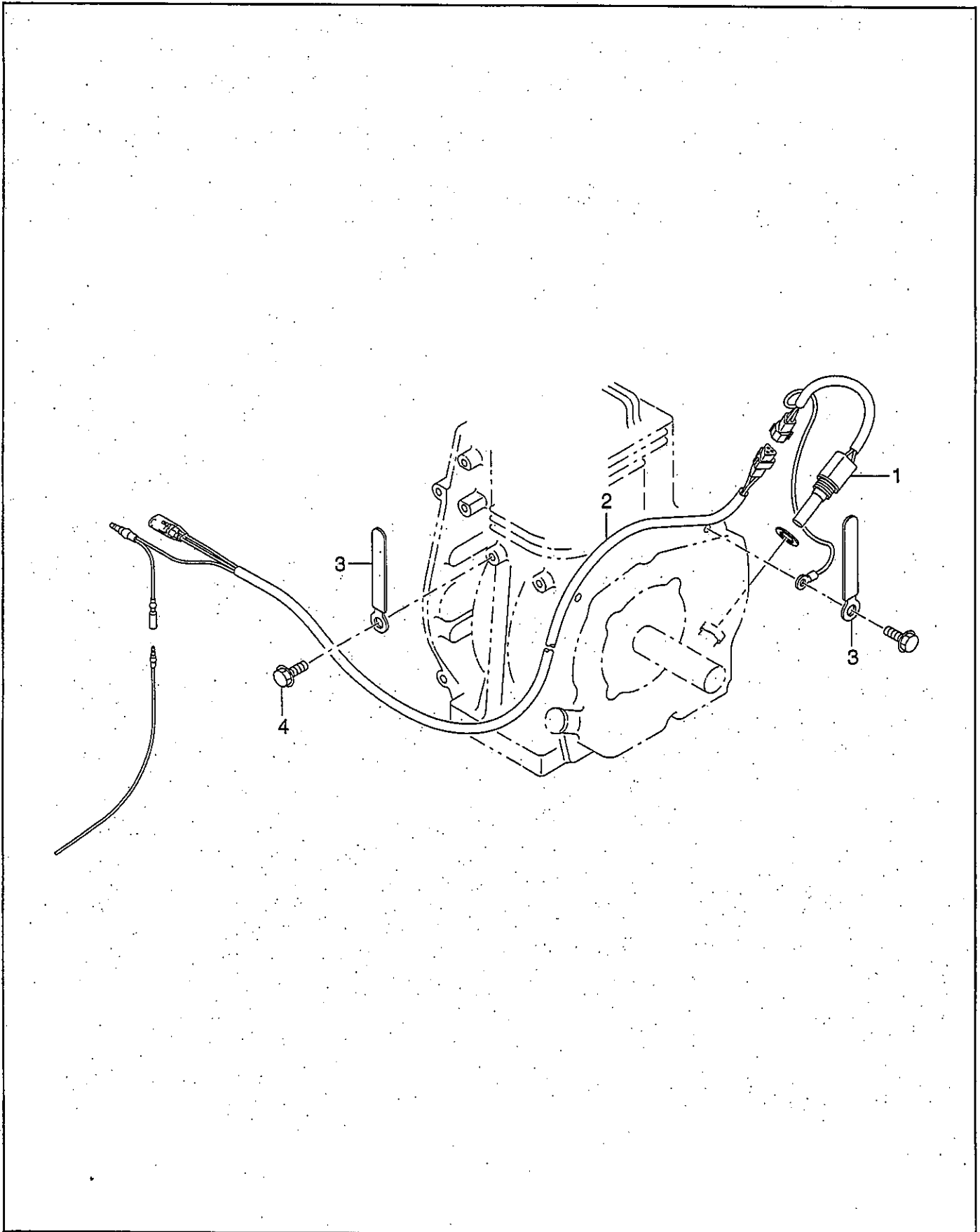


FIG.12 STARTING MOTOR GROUP

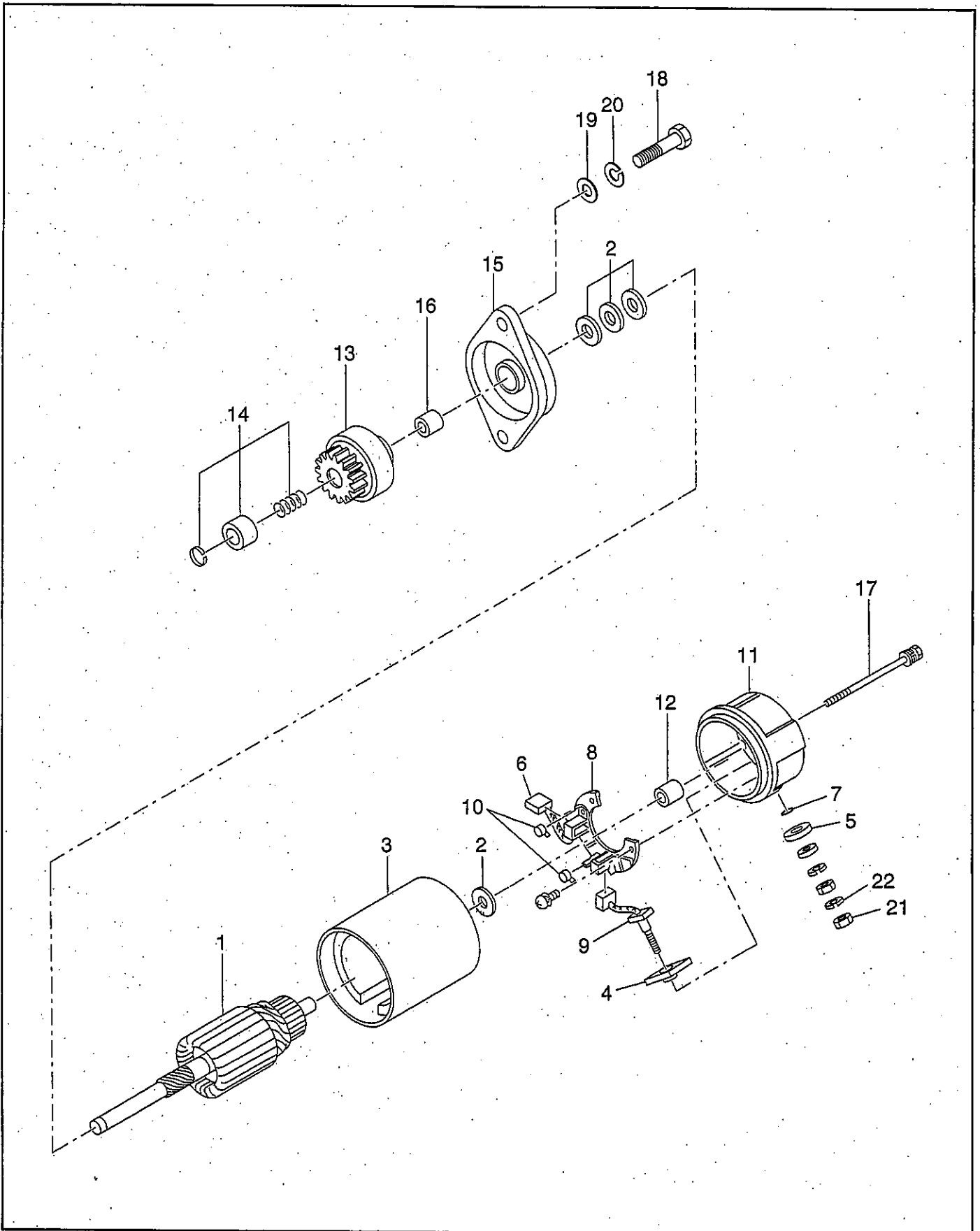


FIG.12 STARTING MOTOR GROUP

↓Interchangeability

Ref. No.	Part Number	Description	Q'ty	Execution
*1	224-70502-00	STARTING MOTOR ASS'Y Includes items 1 thru 17	1	
1	235-70550-08	ARMATURE ASS'Y	1	
2	235-70555-08	WASHER KIT	1	
3	235-70560-08	YOKE ASS'Y	1	
4	235-70565-08	M BUSH (1)	1	
5	235-70566-08	M BUSH (2)	1	
6	235-70535-08	BRUSH (+)	1	
7	246-70580-08	O RING	1	
*8	235-70530-08	BRUSH HOLDER ASS'Y Includes items 9 and 10	1	
9	235-70540-08	BRUSH(-)	1	
10	235-70545-08	BRUSH SPRING	2	
*11	246-70505-08	REAR COVER ASS'Y Includes item 12	1	
12	113-70510-08	METAL	1	
13	224-70551-08	PINION ASS'Y	1	
14	224-70553-08	STOPPER SET PINION	1	
*15	246-70500-08	REAR COVER ASS'Y Includes item 16	1	
16	214-70560-08	METAL	1	
17	235-70575-08	THROUGH BOLT	2	
18	214-79007-01	BOLT, starter	2	
19	003-10080-00	WASHER	2	
20	003-20080-00	SPRING WASHER	2	
21	002-27060-00	NUT	1	
22	003-20060-00	SPRING WASHER	1	

FIG.13 ACCESSORIES GROUP

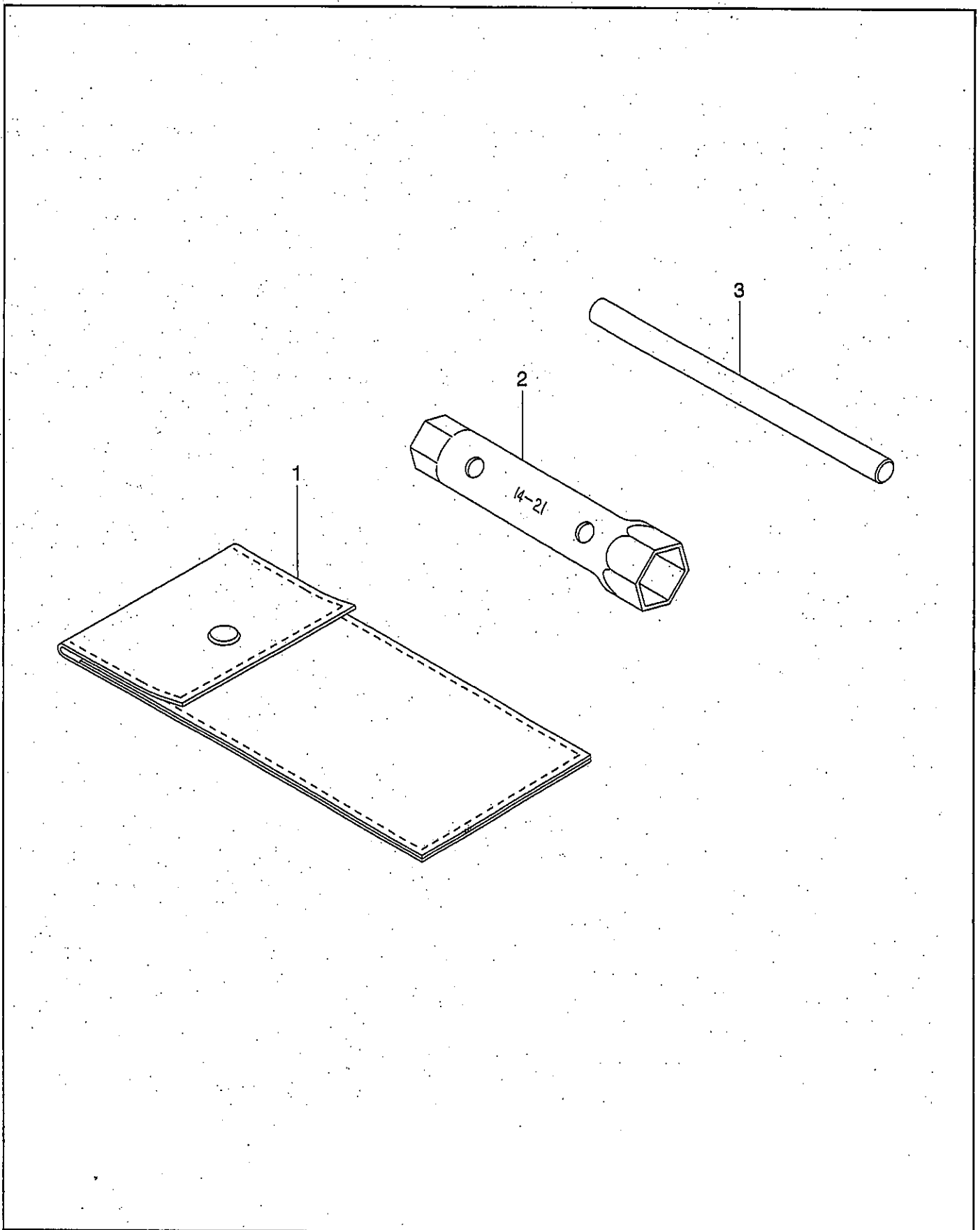


FIG.13 ACCESSORIES GROUP

↯ Interchangeability

Ref. No.	Part Number	Description	Q'ty	Execution
*1	224-90303-00	ACCESSORY TOOLS KIT Includes items 2 and 3	1	